

Vol. XIII.

No. 2.

Kentucky Mission Monthly

OFFICIAL ORGAN OF KENTUCKY BAPTISTS

Entered Feb. 5, 1903, at Louisville, Ky., as Second-class matter, under act of Congress, March 6, 1879.

JUNE, 1913

25 Cents a Year

W. D. POWELL, - - - - - EDITOR
LOUIS ENTZMINGER, - - SUNDAY SCHOOL EDITOR
MISS E. S. BROADUS, - - EDITOR WOMAN'S DEPT.
A. E. WOHLBOLD, - - - BUSINESS MANAGER

Kentucky Baptist Workers Assembly

Dawson Springs, Kentucky.

FOURTH SESSION

JUNE 22nd to JUNE 27th, 1913

Kentucky Baptist Summer Assembly

Georgetown, Kentucky

SIXTH SESSION

JUNE 30th to JULY 4th, 1913.

THE FOREIGN, HOME, and KENTUCKY MISSION MONTHLY, ALL FOR 60c PER YEAR.

Published Monthly at 205 East Chestnut St., Louisville, Kentucky

VACATION TRIPS

Take Your Family to the

MOUNTAINS of Western North Carolina
or East Tennessee

Summer Tourist Tickets on Sale Daily, Good Returning Until Oct. 31

POPULAR EXCURSIONS on June 18, July 16 and Aug. 13

TICKETS GOOD 15 DAYS IN WHICH TO RETURN

EXCELLENT TRAIN SERVICE—ONLY ONE NIGHT OUT

VIA

SOUTHERN RAILWAY

Premier Carrier of the South

For Excursion Rates, Literature, Etc., call on or write

B. H. TODD, District Passenger Agent, Louisville, Ky.

GOLD MEDAL SEEDS

Are selected by Expert Seedsmen with whom Quality is the Sole Consideration, and only the Highest Quality may bear this Brand.

This enables us to sell Gold Medal Seeds under a Positive Guarantee that protects both Dealer and Farmer against loss and assures them that their seeds are the best of their kind.

GOLD MEDAL SEEDS meets every demand of the Dealer and the Farmer. They are sure growers and are sold at Reasonable Prices.

We ship GOLD MEDAL SEEDS on Approval, and if they are not found to be Exactly as Represented they may be returned at our expense.

Can you suggest a fairer proposition.

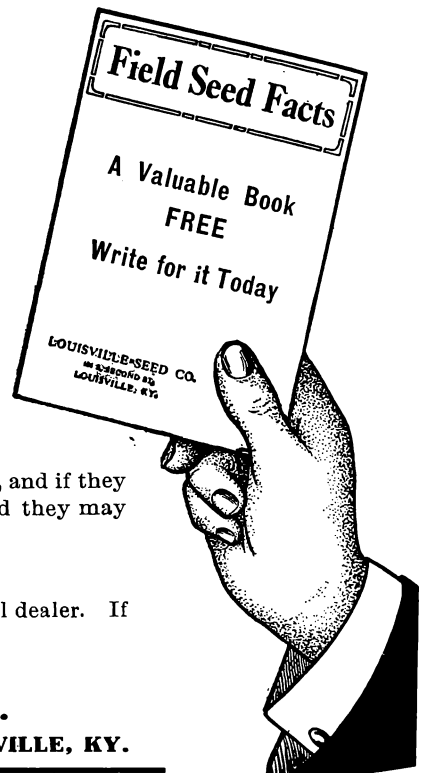
Buy GOLD MEDAL SEEDS from your local dealer. If he does not handle them, write to us.

Free Samples and Quotations sent on request.

LOUISVILLE SEED CO.

104-106 South Second St.

LOUISVILLE, KY.



The Kentucky Mission Monthly

"LET HIM THAT HEARETH SAY COME"

VOL. XIII.

JUNE, 1913

No. 2.

SWEOARSDONS

Roll of Honor.

We deeply appreciate the thoughtful kindness of Brethren E. O. Cottrell, Cloverport; C. W. Elsey, Cynthiana, and T. H. Plemmons, Covington, in sending good lists of subscribers to the State Mission Monthly.

We beg all members of the Board to go and do likewise. The Mission Monthly is taken at 677 postoffices in Kentucky, representing over 800 churches. The seventeen localities having twenty or more subscribers are as follows:

Harrodsburg, 20; Mayfield, 20; Scottsville, 21; Springfield, 21; Newport, 22; Murray, 25; Covington, 27; Pembroke, 27; Lexington, 36; Bowling Green, 37; Paducah, 37; Owenton, 38. Philpot, 39; Cynthiana, 41; Owensboro, 41; Franklin, 44; Hopkinsville, 48; Louisville, 114."—State Board Committee Report.

The Way.

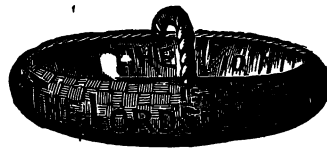
"We recommend that in every possible way our churches be led to see that the Bible recognizes and commands regular and systematic giving, as in I. Cor. 16:2, that it provides for special collections to meet special needs among God's people as in Acts 11:29 that it approves the arrangements of previously promised bounty and the orderly effort to have it in hand at the set time, as in II. Cor. 9:1-5, and that it rejoices in the hilarious giving, which in time of great spiritual uplift like that of Pentecost does the unusual thing and lays down great sums at the feet of the apostle as in Acts 4:34-35. Thus, to be comprehensive and Biblical, our plan of finance must be intelligent, and systematic and symmetrical, and liberal and worshipful."—W. W. Hamilton.

"Especially do we plead that the breath of God may sweep across our pastorates and people, and dismiss timidity, provin-

cialism, ease and narrowness of outlook and that there may come into the spiritual fane of our Southern Zion the flame of sacred love, and kindling on every heart and altar burn there for the glory of Christ, the High Priest with inextinguishable blaze. For behold, the day cometh, and in its light let us go hence to life and triumph and God."—Henry Alford Porter.

Plan.

"Let every church elect a strong Missionary committee and that, as a means of promoting missionary intelligence and interest, this committee, with the co-operation of the pastor, have charge of one prayer meeting service each month."—J. T. Henderson.



TITHING.

"Kept for the Master's Use."

John Baptist "A tithe?" Yes, certainly. The Christian dispensation required no less of giving at least than devolved upon the Jews.

But really, after the necessary expenses of living were met, the tithe of what was left was not very much of an addition to the Master's treasury. Now and then conscience gave a little twinge at the question, "What are necessary expenses?"

There was Jacob's vow at Bethel: "Of all Thou shalt give me, I will surely give the tenth unto Thee"; there were the directions to the Israelites to bring the first fruits, "the tithes of the ground" for the maintenance of the Levites; there was the blessings of the people when, in Hezekiah's time, they brought "in abundance" the "tithe of oxen and sheep and the tithe of

holy things which were consecrated unto the Lord their God." Everywhere a tithe of all—no mention of a reserve from which they themselves should live, and then a tithe of the remainder given to God. "Honor the Lord with thy substance, and with the first fruits of all thine increase; so shall thy barns be filled with plenty thy presses shall burst out with new wine." After a firm believing that one's purse is soundly converted, a comfortable feeling of having always been generous, and a real contempt for stingy people after all this, you will acknowledge that it is mortifying to find not only that one has never given, but that one has actually withheld what was done, has **STOLEN** from the Lord. Add to this surprising revelation that one is not quite willing to lay aside one dollar out of every ten received, for the Lord's service, and you will not wonder that John Baptist was both puzzled and troubled.

So He Began to Tithe.

And if, now and then, the account in this consecrated bank was overdrawn, can you imagine the pleasure of really giving to the Lord? I have no story to tell of wonderful inflows of money that followed the new plan. But somehow, there was a wondrous blessing "in basket and in store," a spending power like that of the cruise of oil in Zarephath. And with this came such a sweet rest and peace and communion with the Lord, in giving that nothing would tempt John Baptist to go back to the haphazard way of giving "as the spirit moved," and supposing that he thus fulfilled his whole duty.

WISE MEN'S WORDS

Adopted by the Southern Baptist Convention Amid Amens.

"In conclusion, your committee would sum up in a few words the suggestions which to them seem essential if we are to remedy the present unsatisfactory financial conditions, viz.: 1. The one dollar minimum for missions, each church giving a sum not less than one dollar each year for each member on the roll. 2. The missionary budget, carrying the apportionment plan through the Associations and churches back to the individuals. 3. The quarter-

ly effort, seeking to distribute the missionary emphasis and to bring up arrearages every three months rather than once a year. 4. The envelope system, laying by in store regularly upon the Lord's Day, and making our giving primarily healthy and proportionate rather than fitful and spasmodic. 5. The higher ideal, making worship out of our giving, seeing to it that it be not mechanical and formal, coming not merely with a tenth to our God, but occasionally with offerings which have been suggested to our hearts by God's manifold and unusual mercies. We, therefore, urge that the suggestions outlined above be pursued with earnestness, prayer and with patient persistence, knowing as we do from the consecrated endeavors and the long struggles of the past that we shall not attain perfection in a day."

Thos. D. Osborne

INTERESTING KENTUCKY BAPTIST ITEMS.

The largest Baptist church in the State is Twenty-second Walnut, Rev. M. P. Hunt, D.L., pastor. It has 1,875 members, 1,000 in the Sunday School. The house of worship cost \$46,000, and they raised in the past twelve months \$15,718.75 for all purposes.

The second largest church is Walnut St., Third and St. Catherine Sts., Rev. H. A. Porter, pastor. It has 1,858 members; 993 in the Sunday School. The building cost \$156,000, and the church contributed during the past year, \$22,309.39 for all purposes.

The third largest church is First church, Lexington, Dr. J. W. Porter, D.D., pastor. The church has 1,520 members. They are just starting a building which will cost \$100,000.

The fourth largest church is Broadway, Rev. W. W. Landrum, D. D., pastor. It has a membership of 1,427; 830 in the Sunday School. The house of worship cost \$107,500. They contributed the past year \$25,214.21 for all purposes.

... EDITORIAL ...

W. D. POWELLEditor

DEDICATION AT BIRMINGHAM.

Sunday, June 8th, was a glad day for the brethren at Birmingham. The church was organized forty years ago but has not prospered for want of a house. Some time ago Bro. Howerton, supported by the State Board and Blood River Association, held a meeting there and started the subscription for the meeting house, the State Board offering to aid. Evangelist Barnes went later and pushed the matter along.

Bro. J. M. Price has been pushing matters to completion.

Saturday night I preached at Gilbertsville. This church is a liberal contributor to missions and has a fine Sunday School.

I was carried to Birmingham in a buggy. Pastor J. M. Price was on hand. Great crowds came. I preached the sermon. The amount sent by the State Board paid all indebtedness. A collection was taken for State Missions. Some \$30 was given. At this juncture Mr. G. W. Martin arose in the congregation and said that the offering was not enough. That he was a Methodist with a Baptist wife and if the people would make the gift \$100 that he would pay one-third. This was quickly done and \$110 was handed to me. We had a great feast in a grove and I spoke on missions. Two deacons were ordained and I left for home, praising God for the substantial forward move the Baptists of Kentucky are making led by the State Board of Missions. Truly the Lord was with us and the hearts of his people were made to rejoice.

We are in great need of funds for State Missions and Church Building.

Rev. Lewis Lyttle recently baptized eight people, among them a lady eighty years of age.

THINGS WORTH WHILE.

Money is transient and perishable, but in the marvelous economy of grace we may secure with it results which are abiding and eternal. By the judicious employment of money in things pertaining to the kingdom we may obey the Saviour's command

to "lay up treasure in heaven."

We must keep clearly in mind that the great aim of State Missions is enlarging the kingdom by winning souls to Christ. Money per se has absolutely no value. It is desirable as a medium of exchange because we can procure things which are spiritual and enduring. Money is only a means to an end.

Our force of State missionaries has been greatly increased. Our demands are urgent because one hundred and twenty-five men and women, toiling faithfully, are looking to the Baptists of Kentucky through the State Board to provide the means for their support. The banks furnish whatever the churches fail to send at the end of each month, so that the families of the missionaries may be fed and clothed. They trust the denomination to furnish the money needed before October 30th.

State Missions unifies our forces and originates power that is felt to the ends of the earth.

We need large sums for Church Building purposes. We also need money to support our colporters, our missionaries and our evangelists as well as our noble Sunday School workers. Let pastors and churches organize their forces for earnest, liberal effort in behalf of this great enterprise and pray God that this may be a year noted for a great ingathering of souls.

Dear Dr. Powell:

As I am to leave this field, I thought I would write a few lines for the Mission Monthly, to let its readers know something of the field and what State Missions has done for it. Under the direction of Dr. Powell, our beloved Secretary, ten months ago, I arrived at Golden Pond, the center of the field, located in the western part of Trigg county, twelve miles from Cadiz, the county-seat, between the Cumberland and Tennessee rivers.

While we found many good and consecrated people, as a whole the cause of our Lord and Saviour was at a low ebb, and is yet, but not quite as low as we found it. Golden Pond, a nice little town of 150 population nestled between the hills, was the main bone of contention between the devil and a few of God's children.

We found here, the town seventy-five years old, but had never had a church building of any character. A church had some few years back been organized; it had twenty-two members enrolled, two men and twenty women, but practically fourteen members, as eight were out of reach, who have since taken their letters. The struggling little band was discouraged, disheartened, as infidelity, indifference and whiskey and several efforts to build only to fail, had brought about conditions that were discouraging indeed, and when we began to talk building all doubted; some said it can't be done, some laughed, some sneered, but thank God all things are possible with Him.

The first thing was a suitable lot. The Lord opened the heart of a brother and he gave us a lot in the center of the town, where a few years back a barroom stood. Then the fight began indeed. Money was hard to get. God gave us courage; we kept begging and building, through all kinds of weather, and discouraging propositions that the devil used to get us to give up, until Sunday, May 25th, the greatest day in the history of Golden Pond and this section of the county ever witnessed.

The day was ideal, 1,500 people gathered from every direction to see the Lord glorified by the dedication of the first church building in Golden Pond. The building complete cost \$1,583. We were \$431 in debt. Again the devil said you can't raise it; we heard it on every side, but we were not uneasy, we had the king of debt raisers with us, our great Secretary, Dr. Powell. After one of those great appeals and a little struggle the hearts of the people began to open, and at 12:15 we dedicated to our God the church building. The prayer was offered by our faithful co-worker, Rev. John Mein, pastor of Cadiz.

With glad hearts we adjourned to a great dinner of barbecued mutton and pig, and many other good things our good women of the town and country had prepared.

Since we have been on the field we have been serving four churches, Cumberland River, a good strong country church; pleasant Valley, a church that has taken on new life; Ferguson Springs, a struggling little church. Since the weather has been

favorable we have had two school house appointments, making six appointments per month. We have held four meetings with twenty-one confessions of faith; received twelve by letter; organized five Sunday Schools; organized two Teacher Training Classes. put organs in Cumberland and Pleasant Valley churches.

We leave the field with Golden Pond self-supporting for one-fourth time and a bright prospect for the cause. We only regret that we were not able to accomplish more. May the Lord bless our successor and the people between the rivers, Dr. Powell and State Missions, as this is only one among many instances of needs and success of State Missions in our dear old State. Let us give more, pray more and work more for lost souls in Kentucky.

With all the honor praise and glory to our Lord and Saviour, I am yours in Christ,
W. A. M. WOOD.

THE PROGRAMME OF ADVANCE.

1. We should reduce our non-residence membership. We need not ruthlessly cut them off, but we must reach them and put them to work. Much of our denominational strength is dissipated in this way. It is claimed that more than one-seventh of our membership is non-resident.

2. Every member must render some personal service. There is work enough for all and the work is so varied that it ought to suit the tastes of all, and each one should be willing to do his part. Each member ought to realize that he has a particular work to perform, and if he fails he will, to that extent, mar the beauty and usefulness of the building. Even the aged and infirm can pray, and sometimes pay.

3. Every member should give. This goes without saying. We owe it to God to give proportionately as God gives to us. If we give regularly, we can then think of ourselves as being in partnership with God. To give a definite percentage is the only way to give proportionately: therefore all ought to give this way. Besides, a definite amount of our income belongs to the Lord. It is just like one's rent: we should be afraid not to pay our landlord, and we ought to be afraid not to give as God has pros-

pered us.

5. The church ought to serve its community. It ought to be a social center, and ought to fling wide its doors for the benefit of anything that is for the welfare of the community, provided it be of a suitable religious nature.

6. Each church should have a missionary committee. This ought to be composed not of figure-heads, but of live men and women. They should conduct campaigns of education. People need to know what is being done on our missionary fields. The committee should conduct an every member canvass, in which all will be urged to give, and in which all will rejoice that they have the privilege of giving. This giving ought to be weekly, for only in this way can we reach the ideals that should ever be before us.

RECEIPTS FOR MAY.

Barren River Ass'n—Summershade ch., Rev. T. F. G., \$1.50.

Bell Co. Ass'n—Middlesboro ch.: C. O., \$3.

Bethel Ass'n—Auburn ch.: A. M. McC., \$5; H. H. A. F., \$146.07; Olive ch., Mrs. W. E. A., \$25.

Bay's Fork Ass'n—Bethel ch., O. J. C., \$1.25; Rough Creek, \$1; Dover, 50c; New Middle Fork, \$3.62; Hopewell, \$6.88.

Blackford Ass'n—H. D. B., Tr., \$10.06; Panther Creek S. S., J. F. C., \$1.

Boone's Creek Ass'n—Mt. Olive ch., W. F. H., \$20.

Bracken Ass'n—Augusta ch., J. F. S., \$10.35; Dover Bapt. S. S., M. C., \$3.63; Mt. Sterling ch., W. T. T., \$94.30; Mt. Olivet ch., S. M. C., \$8.

Breckinridge Ass'n—Cloverport ch., W. C. M., \$45; Brandenburg S. S., Philathea Class, Miss L. M., \$10.

Book Sales—Rev. H. M. E., \$2.50; R. C. K., \$2.12; W. W., 21c; Rev. R. E. R., \$1.02; M. M. M., \$2.10; M. E. M., \$17.95; E. R. R., \$1.85; A. H., 90c; Rev. A. C. H., \$10.79; Rev. F. P. G., 50c; M. L. G., \$5.85; R. B. H., \$3; Rev. F. P. G., 50c; R. B. H., \$3; B. F. R., \$14.50; Rev. J. M. C., \$6.95; W. L. K., \$2; Rev. L. L., \$5.

Campbell Co. Ass'n—Licking S. S.: Miss R. D., 68c; Pleasant Ridge ch., A. M. M.,

(Continued on page 14)

THE HENDERSON ...ROUTE...

L. H. & ST. L. RY.

LOUISVILLE

TO

ST. LOUIS

9:21 Every Night

For Rates or Further Information,
Address

E. M. WOMACK, R. F. PENN,
City Pass. Agt. Trav. Pass. Agt.

S. W. Cor. 4th & Main
LOUISVILLE, - KENTUCKY

... SUNDAY SCHOOL DEPT ...

Louis Entzminger, Editor.

State Sunday School Secretary.

205 E. Chestnut St., Louisville, Ky.

Field Secretaries and Their Addresses:

N. T. Barnes, Box 101, Lexington, Ky.

J. J. Gentry, 4554 Second St., Louisville, Ky.

W. P. Phillips

A-1 SUNDAY SCHOOLS IN KENTUCKY.

Highland Baptist, Louisville—Rev. A. Paul Bagby, Pastor; Dr. B. D. Rivers, Superintendent.

Fifth St. Church, Lexington—Rev. Walter L. Brock, Pastor; Frank L. Smith, Superintendent.

First Baptist church, Murray, Ky., Rev. H. B. Taylor, pastor; Mr. Barber McElrath, superintendent.

Blandville Baptist church, Rev. J. M. Burgess, pastor; Mr. W. J. Hagood, superintendent.

First Baptist church, Bowling Green, Ky.; Dr. L. W. Doolan, pastor; Mr. J. Whit Potter, superintendent.

Mayfield Sunday School, Rev. W. M. Wood, pastor; W. H. Albritton, Superintendent.

Berea Sunday School, H. C. Woolf, Supt.

Baptist Tabernacle Sunday School, Louisville—Rev. Wallace Wear, Pastor; Mr. Matt S. Mann, Superintendent.

Calvary Baptist Sunday School, Lexington—Rev. T. C. Ecton, Pastor; Mr. W. H. Porter, Superintendent.

Glasgow Baptist Sunday School, Glasgow—Rev. W. H. Williams, Pastor; Mr. Elisha Dickey, Superintendent.

Gains for January, February, March, April and May, 1913—The Five Leading States.

Normal Diplomas—Kentucky, 967; Texas, 805; Georgia, 618; North Carolina, 475; Oklahoma, 376.

Red Seals—Kentucky, 181; Texas, 81; North Carolina, 60; Mississippi, 59; Alabama, 47.

Blue Seals—Kentucky, 104; Texas, 31; Alabama, 31; Oklahoma 29; Tennessee, 16.

The Standing to Date—The Five Leading States.

Normal Diplomas—Kentucky, 3,118; Georgia, 2,486; Texas, 2,485; North Carolina, 2,158. Mississippi, 1,752.

Red Seals—Kentucky, 441; Texas, 233; Tennessee, 202; Georgia, 193; Alabama, 180.

Blue Seals—Kentucky, 268; Texas, 123; Alabama, 109; Georgia, 92; Tennessee, 83

Blue Seals Awarded in Kentucky During May, 1913.

Rev. H. N. Blanchard, Louisville; Mrs. E. B. Gatlin, Louisville; Miss Martha R. Crume, Louisville; Rev. O. D. Fleming, Louisville; Rev. Horace Goodin, Louisville; Rev. Frank P. Tolleen, Louisville; Rev. W. S. Shearer, Louisville; Mrs. Charlotte Preather, Louisville; Mrs. Mayme W. Hamilton, Louisa; Miss Hattie Williams, Montgomery; Rev. Jas. S. Day, Brandenburg; Mr. H. F. Green, Smithland; Mrs. H. F. Green, Smithland; Mrs. L. G. Taylor, Murray; Miss Lellie Irvan, Murray; Mrs. E. J. Weller, Sebree; Mrs. Webb Brame, Shepherdsville; Mrs. E. A. Burks, Covington; Mrs. Katherine Lutes, Shepherdsville; Rev. Webb Brame, Shepherdsville; Miss Ruth Ellison, Somerset; Miss May Lee, Shepherdsville; Mrs. L. C. Froman, Lexington.

The Following is a List of Normal Diplomas by Associations to date, May 31, 1913.

Long Run, 531; Blood River, 321; Elkhorn, 256; North Bend, 187; Daviess Co., 144; Campbell Co., 128; West Union, 127; Bethel, 84; Nelson, 76; South District, 74; Wayne Co., 69; West Kentucky, 61; North Concord, 55; Pulaski, 52; Ohio Co., 51; Union, 50; Graves Co., 46; Ohio River, 44; Baptist, 43; Little River, 40; Shelby Co., 39; Breckenridge, 38; Bracken, 37; Enterprise, 36; Ohio Valley, 34; Concord, 34; Crittenden, 32; Muhlenberg, 30; Tate's Creek, 28; Liberty, 26. Franklin, 24; Russell's Creek, 24; Warren, 21; Mt. Zion, 20; Little Bethel, 19; Sulphur Fork, 18; White's Run, 18; Greenup, 17; Boone's Creek, 14; Severn's Valley, 13; Oneida, 12; Laurel River, 12; Lynn, 11; Three Forks, 11; Central, 9; Goshen, 8; Simpson, 8; East Lynn, 5; Ten Mile, 4; Salem, 4; Bay's Fork, 2; East Union, 2; Gasper River, 1; Freedom, 1; Owen Co., 1; Cumberland River, 1.

THE GEORGETOWN ASSEMBLY.

The Georgetown Assembly dates follow immediately the Dawson Spring dates. Mr. George Newell, chairman of the local committee at Georgetown, says that requests for reservations are coming in thick and fast. If you want the best service at Georgetown, you had better make reservation. DO IT NOW. Write him right away, so that if the college buildings are overcrowded, he will be able to provide good lodging for you in rooms in the nearby residences. The hotels at Georgetown and many of the homes will be thrown wide open to us if we are only able to notify the people in time.

We are confidently expecting an attendance of one thousand and if you are to get the best service, be sure to make reservation. Write Geo. M. Newell, Georgetown, Ky.

Our talent for the Georgetown program is drawing many new faces this year. There is a great time ahead, June 30-July 4.

The rate to the Georgetown Assembly will be one and one-third fare, plus 25 cents. In purchasing tickets to Georgetown do not fail to secure receipt from agent. It will be necessary to have certificate in order to get the rate of one-third fare returning. This is important. The following clause is taken from the regular tariff schedule issued by the Southeastern Passenger Association. It must be complied with. Be sure to secure receipt.

"Going trip. It is necessary that delegates and members attending meetings specified herein procure standard form certificate-receipts from agents when going tickets are purchased. If through tickets to place of meeting can not be procured at starting stations, such persons should purchase to most convenient stations at which such through ticket can be obtained and there re-purchase through tickets to place of meeting, procuring certificate-receipts from each agent from whom a ticket is purchased, and presenting all certificate-receipts to Special Agent at place of meeting. No refund of fare can be expected because of failure to secure certificate-receipts."

There are many things regarding the Sunday School work for the month that we would like to call attention to, but we necessarily had to use the space for other things. Look out for Sunday School news in the next issue.

AN IMPORTANT ANNOUNCEMENT.

Brother Leonard Leavell, our Western Kentucky Sunday School Secretary, recently resigned his position with us to accept the Maryland State Secretaryship at an increased salary. He goes to a very important work.

To succeed Brother Leavell our Board, at its last meeting, elected W. P. Phillips, formerly of Galveston, Texas. Brother Phillips resigned a lucrative position as a commercial salesman to better fit himself for a larger work for the Lord. He came to the Seminary last year and has completed a course in Sunday School Pedagogy, Old and New Testament and Biblical Introduction. We have received many words of commendation from those who knew of Brother Phillips' experience and ability in the Sunday School and B. Y. P. U. work. He is very consecrated, practical and enthusiastic. He has a wife and little girl.

THE DAWSON SPRINGS ASSEMBLY.

It would be a shame on West Kentucky Baptists for less than eight hundred or a thousand people to attend our Dawson Springs Assembly. With Dr. Gambrell, Dr. Dargan, and Dr. Gravett on Bible Work, the Scholfields to lead the singing, Dr. Johnson to lead us in the Mission Work, and our Sunday School faculty of Mr. Leavell, Miss Frost and Miss Brenchmann, who could afford to stay away?

We will be greatly disappointed if there is not a large attendance. Please urge upon the people everywhere to attend. Let us have a great spiritual and social feast and uplift at Dawson Springs, June 22-27. The regular rate to Dawson Springs is one and one-third fare all the season. This is a cheap rate and is the regular season rate.

... WOMEN'S DEPARTMENT ...**Central Committee.**

Miss E. S. Broadus **Chairman**
1227 Third Avenue.

Mrs. B. A. Rees **Treasurer**
2326 Longest Avenue.

Mrs. Kate Hinkle..... **Secretary**
Box 396.

A New Worker in Greenup Association.

Greenup Association embraces Lewis, Carter, Greenup, Boyd and Lawrence Counties. The work has been divided into two districts, cutting off part of Carter, Greenup and Lewis Counties in the Western District. This district contains eleven churches.

A District Board was organized, and they have elected Rev. W. H. Howes, who will operate as co-operative missionary of the District Board and the State Board. He will serve Leatherwood and Tygart Valley churches. The Tygart and Kenny Valleys run through this district. They are some sixty miles each in length and are inhabited by many thriving farmers, who are largely Baptist in sentiment. There are two churches in Kenny Creek and only one church in Tygart Valley. This was recently purchased by Brother Howes and his people from the Methodists.

New churches need to be built. Brother Howes is a man of energy and initiative and a good preacher, and we feel that under the blessing of God he is to do good, constructive work. He built several houses of worship in Johnson and Magoffin Counties and organized two churches in that region. They are doing splendid work.

Woman's Missionary Union.

The Annual Meeting in St. Louis was a notable gathering, for numbers, enthusiasm and promise of results. More than 11,000 delegates and visitors were registered as attending the W. M. U., and the large audiences were a fitting index of the interest and attention. Our President, Miss Heck, spoke in her usual broadminded and suggestive way, but with more than ordinary

fervor. Miss Mallory adorned her position of Corresponding Secretary, making glad our hearts at having won her for this position, while our Treasurer, Mrs. Lowndes, and Recording Secretary, Mrs. Johnson, can not be excelled.

The first day was taken up with committee meetings, the Margaret Home, Training School and Executive Committee each affording an opportunity for full and free discussion of the trusts that have been placed in their hands. In the Executive Committee, the Vice-Presidents of each State confer with each other and the officers and members of the Baltimore Committee as to the principal matters to be brought before the general meetings, thus making possible the bringing of these meetings within proper limits.

The Policy for Central Committees gives the essence of the discussion and decisions of the meeting, and only a few points seem to need some explanation.

The Commissions on Efficiency offer a solution of a long-thought upon problem, how each State can know and profit by the experiences of others. These commissions will correspond and compare rates throughout the year, reporting next May at Nashville for our benefit what they have learned. The Kentucky members are for the Committee on Organization, Mrs. Millard F. Cox, of Louisville; for Urban efficiency, Mrs. J. P. Scruggs, of Midway, and for Rural efficiency, Miss Elizabeth Garrott, of Oak Grove.

The Jubilate celebrations to be held at Associational meetings have a program providing for an hour and a half to be spent in this way, which may be obtained by writing to Central Committee, Box 396, Louisville, Ky. There is likewise one prepared especially for towns where there are several churches, who will unite in such a celebration, and another for single churches in town or country. Number 2 provides for morning, afternoon and evening sessions, and may be used at Associations, if preferred. Each of these contains the words of the beautiful new hymns written especially for the Jubilate. For those wishing the music also, there is a "Folder of Jubilate Songs," five cents a copy, 50 cents a dozen, for which write to W. M. U.

Literature Department, 15 W. Franklin, Baltimore, Md.

The continued task of enlisting more young people is of special importance in Kentucky, where we have made less progress than was hoped for in this direction. Our Leaders of Sunbeams, Y. W. A.'s or Royal Ambassadors, can accomplish little without the help of the older women in their societies. Each Woman's Mission Society is urged to consider prayerfully its duty towards the children and youth in its own church, and start them in the love for missionary work that should be a life-long motive and incentive.

The Margaret Home being closed for the present, and the Training School needing more money for current expenses, give to the latter what you have heretofore sent for Margaret Home. We shall have only one column for Training School, making Current Expenses and Enlargement one item in Apportionment, and dividing the receipts according to the amounts expected from our State for each of these objects.

Others points will be enlarged upon in future issues of the Monthly.

Our New Secretary.

Miss Hunter is leaving us for long-desired work in China, where she will be at the head of a girl's school in Hwang Hien. In her place, we introduce to you Mrs. Kate Coleman Hinkle, well-known to many during her school days in Georgetown, and her married life in Bardstown. Since the death of her husband, she has been City Missionary in Virginia. Everywhere she has shown efficiency, industry, faithfulness and zeal in the cause of Missions, all actuated by genuine love for God. We expect great usefulness for her in this position, and she will readily respond to calls for her services in Associational and other meetings. The Field Work Committee consists of Mrs. Hinkle, Miss Lamb and Mrs. Woody, who will use their best judgment in deciding between any conflicting calls. Address Mrs. Hinkle, at Box 396.

CENTRAL COMMITTEE POLICY 1913-14.

Preamble.

With thanksgiving for what God hath wrought in and through us in the past and prayerfully asking for a clearer vision of His purposes for us in the future, both as individuals and as an organization, we adopt the following policy for 1913-14:

Jubilate Year.

We should sound the note of joy throughout this entire Jubilate year, looking forward to the realization of our hope that we begin immediately to hold Jubilates in the district or associational meetings, following these by society Jubilates and bending our energies to one central celebration in addition to the impressive one to be carried out in the program of the annual meeting. In each of these we would emphasize the four-fold purpose of the Jubilate, namely: historic; personal, spiritual uplift; an increase in gifts marked from this time forward; and some definite, personal service left as a memorial to each Jubilate meeting.

Mission Study.

In addition to the regular missionary program, we would continue to cultivate the growing interest in Mission Study Classes, this year being given to the study of the Mission Work of Southern Baptist Women, using as our text book, "In the King's Service," written by Mrs. Heck.

Help to the Commissions.

Great increase in efficiency may be expected through collecting and comparing plans of our State Unions, city and country societies. Therefore we would give all the help in our power to the three commissions: The Commission on Organized Efficiency, the Commission on Efficiency of Urban Societies and the Commission on Efficiency of Rural Societies.

The Continued Task.

Earnest attention to the "Immediate Task" having resulted in the organization of more than eight hundred Junior societies, we should see to it that we suffer none of these to languish through our neglect but that, on the contrary, we not only maintain these but that we add an even larger number this year and that, through the New Membership Campaign, we sub-

stantially increase our present membership.

Uniform Standards for All Branches.

The gratifying efforts to reach the Uniform Standard of Excellence and the manifest benefit accruing therefrom having led the Union to adopt Standards of Excellence for all branches, we would hold them before the Sunbeams, Royal Ambassadors, Jr. and Young Women's Auxiliaries, and the Women's Missionary Societies throughout the entire year, carefully reporting their standing at the end of the year.

"Our Mission Fields.

It is with exceeding pleasure that we record the success of the plan entered into last year whereby "Our Mission Fields" was made self-supporting, and, the Union having this year determined to bend every energy to treble the subscription list in order that the W. M. U. Literature Department may be able at the end of the year to convert it into a monthly magazine, we would give to this determination our early and persistent effort.

Five-Year Plan.

During the three years of the five-year plan, by which \$35,000 is to be raised for the Enlargement Fund of the Training School for 1915, over \$17,000 has been raised. This leaving about \$18,000 to be given within the next two years, it is highly desirable that this be stressed.

Personal Service.

We call attention to the splendid record made by the societies in this department of the work, and would recommend that we endeavor to lead along the broad and far-sighted lines, suggested in the Recommendations of the Executive Committee, by the study of the best methods of social uplift through the new leaflets of the Personal Service Committee and other publications of a like nature.

The Gifts.

While during the Jubilate Year we shall joyfully make, as individuals, large gifts to the Million Dollar Church Building Loan Fund and the \$1,250,000 Judson Centennial Equipment Fund, we would impress upon the societies the imperative necessity of at least a ten per cent. increase in our gifts to the regular work of Home and

Foreign Missions.

The Future.

That while this year will be distinguished from other years by its Jubilate character, all plans should look to the future, that at the end of the year we may find ourselves greatly strengthened for sustained growth in all lines of Union endeavor.

My dear Vice-Presidents:

We have succeeded in making arrangements, by which our Secretary can be out of the office most of the time during the summer and free to give herself almost entirely to Field Work.

Mrs. Kate Hinkle, our new Secretary, will be at your disposal and can come to your association for several days or a week's work, among the churches if you want her. The expenses of her field work will be met by the Central Committee, but we ask that you make plans before she comes to you so that no time will be lost in making arrangements with the churches after she reaches the association. She already has engagements for some work in August.

If you wish for her to work in your association either among the societies or among the churches where there are no societies, please write in the next few weeks, giving the dates you prefer having her, and, if possible, she will give you that time. July, August, September and October are all open for work. I hope you will co-operate with us in making the summer Field Work very valuable.

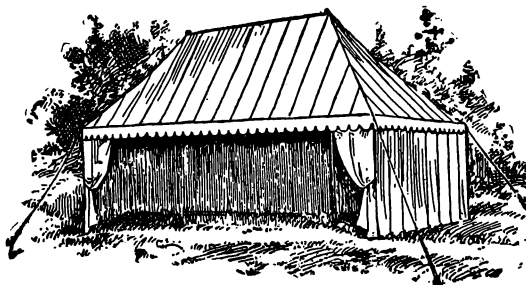
In giving up the W. M. U. Work in Kentucky, I wish to express my appreciation of the sincere co-operation which has been given me in all parts of the work. I have pledged your co-operation and support to Mrs. Hinkle, and I know you will not fail her. I shall carry to my new field of labor in China sweet memories of the year spent among you and in my far-away home, shall watch the progress of your work in Kentucky with loving interest and prayers.

Clifforde E. Hunter.

Kentucky Mission Monthly, Home Field and Foreign Mission Journal, all for 60 cents per year.

GO CAMPING

This Summer



You'll Like Living in an L. T. & A. C. Tent

on the banks of a crystal stream near a nice spring where you can rest in the cool shade of the trees and drink in the blessed ozone from the fields and woods—My, My! What a Treat. Ask us now for how cheaply we can supply the whole outfit.

LOUISVILLE TENT & AWNING CO.

Incorporated

116 South Third Street,

Louisville, Kentucky.

Two Books You Ought to Have

For the Sake of Others If Not For Your Own

BAPTIST BELIEFS

By Pres. E. Y. Mullins, D. D.

Clear, concise, attractive statement of Baptist Beliefs, including "Liberty of Conscience," "Education," "Missions," and "Social Service" in addition to beliefs usually contained in such a treatise. The New Hampshire Declaration of Faith is printed in the back of the book.

'Dr. Strong says: "It fills an empty niche in our literature."

Dr. MacArthur says; "Its sanity of thought is beautifully paralleled by its lucidity of statement."

The Western Recorder says; "We anticipate for it a wide and useful circulation."

If you are a weak Baptist it will help to make you a strong one. If you are a strong Baptist it will make you a stronger one.

Bound in chaste blue cloth with white stamping.

Only 50 Cents Net, Postpaid.

DOROTHY PAGE

By Eldridge B. Hatcher, D. D.

A charming denominational story upholding the distinctive doctrines of the Baptists in a most direct, interesting and convincing way.

Rev. Dr. Rufus W. Weaver of Nashville, Tenn., a man of fine literary taste and discriminating judgment says: "The presentation of the Baptist position in fictional form reaches and convinces in a way that the controversial sermon never can. The Baptist propaganda requires this type of literature and in 'Dorothy Page' Dr. Hatcher has not only surpassed himself but has set a new standard for all others."

194 pages, printed on high grade paper, bound in dark green silk cloth with white stamping and exquisite portrait of the heroine in colors on the cover. An ornament to any parlor table. Would easily sell at \$1.25, but the price has been placed at

Only 60 Cents Net, Postpaid

BAPTIST WORLD PUBLISHING COMPANY Incorporated
LOUISVILLE, KENTUCKY.

MAY RECEIPTS—Continued

\$9.68; 1st 12-Mile ch., \$4.25; Alexandria ch., \$16.65; Licking Valley, \$1.31; Oak Island, 50c; Newport S. S., Miss L. W., \$1.

Central Ass'n—Mackville ch., J. O. B., Tr., \$12.50.

Crittenden Ass'n—Knoxville ch., A. M., \$8.55; H. T. C., \$100.

Cumberland Ass'n—Flat Lick, Z. J. A., \$23.04.

Daviess Co. Ass'n—Whitesville ch.: W. H. R., Tr., \$112.34; Sorgho ch., \$15; Bethabra ch., \$140.

Elkhorn Ass'n—Indv. gift, Rev. T. C. S., \$5; Siles ch., A. S., \$9.50.

Enterprise Ass'n—Allen ch.: E. C., \$1.

East Union Ass'n—Boston ch.: Rev. H. H., \$16.85; Gatliff ch.: F. R. W., \$20; F. R. W., \$6.36.

Franklin Ass'n—1st ch., Frankfort: Dr. J. W. H., \$39.

Franklin Ass'n—Jas. H. Martin, Tr., \$46.

Greenup Ass'n—Leatherwood ch.: Z. J. A., \$10.

Goshen Ass'n—Leitchfield ch., H. A. L., \$56.11.

Graves Co. Ass'n—Trace Creek ch., W. M. W., \$6; Mayfield ch., \$74.22.

Individual Gifts—A Friend, \$5; Rev. D. I. P., 25c; W. D. P., 60c; Mrs. M. C., \$10; Ky Miss. and Band Seminary, 85c.

Journals—Rev. T. F. G., \$1.20; Miss D. B., 25c; Rev. C. E. S., \$2.05; R. C. K., \$3; Rev. H. H., 60c; D. K. S., \$1; W. J. C., 25c; W. H. S., 60c; Mrs. F. A. A., \$4.20; Mrs. B. W. H., \$1; Rev. A. S. P., \$1; Rev. F. P. G., \$2.40; Mrs. F. C. B., \$6.20; W. D. P., \$1; Miss L. P., 60c; T. F. G., \$2.40; Rev. J. M. P., \$1.45; S. J. C., 25c; G. M. B., 60c; Mrs. R. H., 60c; N. T. B., 85c; Mrs. S. E. A., \$3.90; Rev. F. P. G., \$4.80; Rev. T. C. C., 20c; Rev. J. E. B., 60c; Mrs. R. B. B., \$2.05; J. E. G., 25c; Mrs. J. H. H., 35c; Mrs. O. H. G., \$3.50; Rev. W. S. S., \$7.50; Mrs. F. D., \$1.05; Dr. R. L. C., 25c; Miss L. D., 60c; Rev. O. M. S., \$1.20.

Ky. W. M. U.—\$200.59.

Little River Ass'n—C. M. W., Tr., \$1,000.

Liberty Ass'n—Hiseville ch., W. J. P., \$7.75; Edmonton ch., Rev. J. W. B., \$2.25; Horse Cave ch., Rev. J. M. B., \$5.

Logan Co. Ass'n—Elk Lick ch., D. P. B., \$5.75; I. N. Y. Fund, \$2.18.

Long Run Ass'n—Highland Park ch., Rev. A. F. C., \$11.30; Baptist Tabernacle,

W. W., \$14.50; Baptist Tabernacle, W. W., \$35.50; East Bapt. ch., W. O. F., \$6.85; Little Flock ch., Mrs. J. R. H., \$2.50; Little Flock B. Y. P. U., 92c; Mt. Wilder Mission, H. O. F., 55c; Eight Mile ch., J. B. T., \$4.60 Broadway ch., T. J. H., \$50; 3rd Ave. ch., M. W., Tr., \$28.97; Beechland ch., E. J. B., \$4.29; 22nd and Walnut St. ch., Dr. R. L. C., \$60.76; Highland Bapt. S. S., W. S. C., Tr., \$12.17.

Miscellaneous—T. H. E., \$3,000; Rents, \$15; J. W. C., \$25; S. L. G. Bldg. Fund, \$51.10; S. L. G. Bldg. Fund, \$31.35; T. H. E., \$250; Jenkins ch., J. W. C., \$25.

Mt. Zion Ass'n—Y. M. C. A., Corbin, \$35.

Nelson Ass'n—Bardstown ch., H. H. M., \$334.31; Vine Hill ch., M. M. McF., \$3.35; Bloomfield ch., Y. L. M. U., T. P. S., \$10; Little Union ch., Rev. J. A. B., \$30.

North Concord Ass'n—Warren ch., Z. J. A., \$30.75.

Oneda Ass'n—T. M. (Ind. Gift), \$2; Bethany ch., Rev. A. J. M., \$5.

Rockcastle Ass'n—Brodhead S. S., W. H. S., \$5; Livingston ch., Mrs. C. E. R., \$8.

Shelby Co. Ass'n—Finchville ch., J. T. M., \$116; Pleasureville ch., J. T. M., \$40; Shelbyville ch., J. C. Fund, \$3.

South District Ass'n—Beech Fork ch., J. L. A., \$1; Perryville ch., \$5; Mt. Moriah ch., \$7.18.

South Ky. Ass'n—Mt. Calvary ch., D. B., \$5.

Ten Mile Ass'n—Mt. Zion ch., Miss M. K. S., \$46.63; Concord ch., Rev. J. E. M., \$20.05; Mt. Zion ch., M. K. S., \$27.25; Mt. Zion ch., L. A. S., \$6.80; Mt. Zion S. S., \$9.70.

Three Forks Ass'n—Hazard ch., Rev. A. S. P., \$25; Hazard ch., Rev. A. S. P., \$25; Hyden ch., Rev. O. J. C., \$36.

Union Ass'n—Palestine ch., Rev. N. E. S., \$3.15; Cynthia ch., C. M. J., \$20.

Upper Cumberland Ass'n—Harlan ch., Z. J. A., \$5.

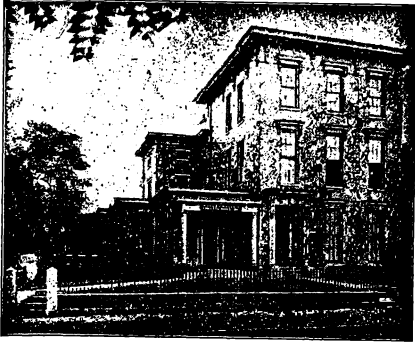
Warren Ass'n—W. F. Coleman, Tr., \$174.79; 1st ch., Bowling Green, J. W. P., \$193.23; Oakland S. S., Mrs. S. J. H., \$10.07.

1st Bapt. S. S., B. P. E., \$5.82; 1st Bapt. S. S., W. B. G., \$6.40; Burton Memorial ch., Rev. O. J. C., \$10.

West Ky Ass'n—Barrowell ch., Miss M. M., \$20; Arlington ch., J. H. P., \$36.65; Hickman ch., W. L. K., \$1.

West Union Ass'n—Belview ch., Mrs. H. J. F., \$23.40.

A CHAPEL FOR PATRONS



LEE E. CRALLE

Funeral Director

S. W. Cor. 6th and Chestnut Sts.
Telephone Main 430

LOUISVILLE, - KENTUCKY

MOLL & CO.

Incorporated

Printers, Binders

Publishers

120 S. First St. Louisville, Ky.

Home Phone 351 Correspondence Solicited

BLUM ART GLASS CO.

INCORPORATED

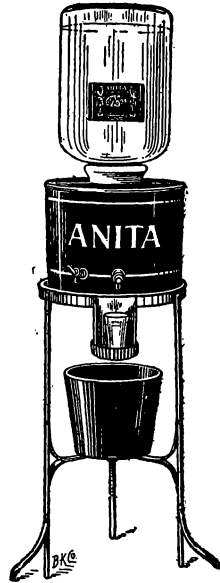
Maker of Church Windows

640 Third St. Louisville, Ky.

“ANITA”

AMERICAN LIGHTEST WATER

Always Pure, Fresh & Invigorating



THE BEST COOLER ON THE MARKET

Anita Spring Water Co.

INCORPORATED

PHONES { Home 4520
Cumb. M. 1468-A

Our New Plant, 210-212 Pearl St.
LOUISVILLE, KY.

---WE ARE---

MANUFACTURERS OF

MONUMENTS

Of High Class, But Moderate Prices

Peter-Burghard Stone Co.

SALESROOM

317 W. Jefferson St.

PLANT

13-14 Maple St. Louisville, Ky.

Every Child Should Know

A Remarkable Series of Books at a Remarkable Price

50 Cents: Postage 10 Cents

"What books shall I get for my children?" It is no longer hard to know what books to give to children who have begun to read for themselves.

This series of "Every Child Should Know" books might also be called "Every Child Will Enjoy" books. They are recognized as standard. They are safe books for children. They inform the mind, develop the imagination, and are entertaining. They are, in fact, as well as in name, a garnering of what "Every Child Should Know."

This popular edition at 50 cents per volume has exactly the same contents as the edition which is sold at much higher prices.

"EVERY CHILD SHOULD KNOW" BOOKS

FAMOUS STORIES

Every Child Should Know.
Edited by Hamilton W. Mabie.

HYMNS

Every Child Should Know.
Edited by Dolores Bacon.

HEROINES

Every Child Should Know.
Co-edited by Hamilton W. Mabie
and Kate Stephens.

ESSAYS

Every Child Should Know.
Edited by Hamilton W. Mabie.

POEMS

Every Child Should Know.
Edited by Mary E. Burt.
Decorated by B. Ostertag.

FAIRY TALES

Every Child Should Know.
Edited by Hamilton W. Mabie.
Decorated by B. Ostertag.

WILD ANIMALS

Every Child Should Know.
Edited by Julia E. Rogers.

MYTHS

Every Child Should Know.
Edited by Hamilton W. Mabie.
Decorated by B. Ostertag.

SONGS

Every Child Should Know.
Edited by Dolores Bacon.

EARTH AND SKY

Every Child Should Know.
By Julia Ellen Rogers.

PROSE

Every Child Should Know.
Edited by Mary E. Burt.

PICTURES

Every Child Should Know.
By Dolores Bacon.

WILD FLOWERS

Every Child Should Know.
By Frederic William Stack.

BIRDS

Every Child Should Know.
By Neltje Blanchan.

TREES

Every Child Should Know.
By Julia Ellen Rogers.

LEGENDS

Every Child Should Know.
Edited by Hamilton W. Mabie.
Decorated by B. Ostertag.

HEROES

Every Child Should Know.
Edited by Hamilton W. Mabie.
Decorated by B. Ostertag.

WATER WONDERS

Every Child Should Know.
By Jean M. Thompson.

FOLK TALES

Every Child Should Know.
Edited by Hamilton W. Mabie.
Illustrated by W. W. Faucett.

OPERAS

Every Child Should Know.
By Dolores Bacon.
Decorated by B. Ostertag.

Baptist Book Concern

Incorporated

**650 FOURTH AVENUE
LOUISVILLE, KY.**