

Kentucky Mission Monthly

OFFICIAL ORGAN OF KENTUCKY BAPTISTS

Entered Feb. 5, 1903, at Louisville, Ky., as Second-class matter, under act of Congress, March 6, 1879.

NOVEMBER, 1912

25 Cents a Year

W. D. POWELL,	- - - - -	EDITOR
LOUIS ENTZMINGER,	-	SUNDAY SCHOOL EDITOR
MISS E. S. BROADUS,	-	EDITOR WOMAN'S DEPT.
A. E. WOHLBOLD,	- - -	BUSINESS MANAGER

Officers

C. M. Thompson, Moderator J. W. Porter, Asst. Moderator, F. D. Perkins, Asst Moderator, John L. Hill, Sec'y A. E. Wohlbold, Asst. Sec'y.

Executive Board

J. W. Porter Chairman, Lexington, Ky. E. C. Farmer, Rec. Sec. Louisville, Ky
Thos. D. Osborne, Treas. Louisville, Ky. A. L. Crawley, Asst. Sec. Louisville, Ky

J. A. Booth, Taylorsville	H. A. Porter, Louisville	B. F. Swindler, Carlisle
W. T. Bruner, Louisville	W. W. Landrum, "	F. W. Eberhardt, Franf't
R. L. Carter "	N. C. Shouse, "	E. O. Cottrell, Cloverport
S. J. Cannon "	W. M. Stallings, Smith's Gr.	A. B. Gardner, B'ver Dam
J. C. Greenoe, "	W. M. Wood, Mayfield	M. D. Early, Monticello
J. F. Griffith, "	C. W. Elsey, Cynthiana	W. E. Michell, Adairville
G. W. Argabrite "	T. H. Plemmons, Covingt'n	A. S. Pettie, Owensboro
E. S. Alderman "	W. E. Hunter, Somerset	H. B. Taylor, Murray
G. P. Comer, "	A. Gatliff, Williamsburg	C. M. Thompson, Hopkinsville
Wallace Wear, "	M. E. Staley, Fulton	W. J. Puckett, Cave City

Baptist State Board of Missions

Rev. W. D. Powell, Cor. Secretary; 205 E. Chestnut St., Louisville, Ky.
Louis Entzinger, Sunday School Secretary; 205 E. Chestnut St., Louisville, Ky.

Kentucky Central Committee

Miss E. S. Broadus, Chairman; 1227 Third Ave. Louisville, Ky.

Baptist Minister's Aid Society

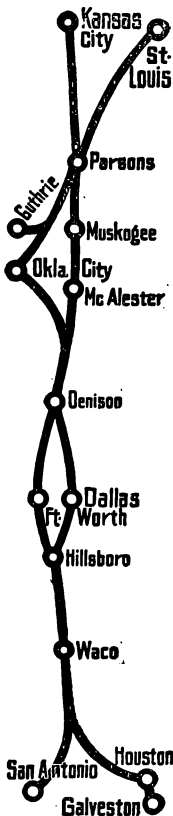
J. D. Maddox, Corresponding Secretary; 700 Bolivar St., Owensboro, Ky.

Baptist Education Society of Kentucky

Rev. M. B. Adams, Corresponding Secretary; Frankfort, Ky.

Published Monthly at 205 East Chestnut St., Louisville, Kentucky

The best service southwest is via "Katy"



Proved twice every day by these two limited trains of unlimited comfort:

The Katy *limited*

leaves St. Louis every morning at 10:05 a. m., Kansas City 5:30 p. m., enters Oklahoma in the evening, Texas early next morning and reaches San Antonio, Houston and Galveston that evening. Dining car service on this train.

The Katy *flyer*

leaves St. Louis every evening at 8:32, (Kansas City 2:20 a. m.) enters Oklahoma early next morning, Texas late this afternoon and San Antonio, Houston and Galveston early next morning. These trains run over the

Katy all the way and carry through chair cars and electric lighted sleepers.

Trains from your city make good connections in St. Louis and Kansas City with these two Katy trains. In buying your ticket just say "Katy" to the agent. He will understand.

Ask about the low fare excursions via Katy twice each month. Drop me a postal for full information.



W. S. St. GEORGE, General Passenger Agent
Wainwright Bldg., St. Louis, Mo.

BAPTIST BELIEFS

By Pres. E. Y. Mullins, D. D.

CLEAR CONCISE CONVINCING
96 pages. Cloth. Price 50c Postpaid

Brazilian Sketches

BY REV. T. B. RAY, D. D.

New Mission Study Text Book

136 pages. Illustrated

Cloth 50c - - - Postage 7c
Paper 35c - - - Postage 5c

Modern Baptist Heroes and Martyrs

EDITED BY REV. J. N. PRESTRIDGE, D. D.

One of the greatest inspirational books of
the day

325 pages 16 full page illustrations
Cloth \$1.00 net Postage 10c

SUBSCRIBE FOR

The Baptist World

"That Live Paper"

32 pages weekly, illustrated. The very best medium for obtaining a wide view of Baptist achievement and opportunity. Short, spicy, purposeful stories.

PRICE \$2.00 PER YEAR

Special contract at **\$1.50 PER YEAR** on two simple conditions: 1st, that it be paid strictly 12 months in advance, and 2nd, that it be regarded as a continuous subscription from year to year at this price, but with the understanding that it may be discontinued by the subscriber at any time by notifying us and paying arrears, if any.

Baptist World Pub. Co.

Incorporated

LOUISVILLE, KENTUCKY

The Kentucky Mission Monthly

"LET HIM THAT HEARETH SAY COME"

VOL. XII.

NOVEMBER, 1912

No. 7.

GENERAL ASSOCIATION GLANCES.

Madisonville Session, November 12-15.

Prayer and praise predominated.

Pastor Lewis Lyttle was the mountain star.

Judge Hamberry's State Mission report was inspirational.

Dr. W. D. Powell, as the power behind the throne, expedited business.

Dr. J. W. Porter drew his sword, threw the scabbard away and fought.

Judge Gentry was ahead of all the bar in giving, and Sunday School work.

Total Mission fund receipts, \$133,713.21, of which \$59,274 was for church building.

Everybody had the best home, of course, but Bro. Frank Cardwell led in hospitality.

Leatherwood church pays its pastor \$12 a year salary, and he pledged \$25 for State Missions.

The attendance was the largest ever and everyone said "I am glad I came."

There was never a meeting with so much praying and singing, hence the success.

Model Moderator, Calvin M. Thompson, was the choice for life as the unsurpassed presiding officer.

Judson Centennial was "Hamlet with Hamlet left out." The leaders were absent, but Dr. F. W. Eberhardt saved the day.

President Yager held the Standard of Georgetown College up high. He is its heroic helper.

Bless the women, they gave \$23,311 this year; \$2,776 for State Missions, and promised \$3,500 next year.

Secretary J. L. Hill surpassed in successful service of every kind and he was so silent in his good work.

President Perkins and Bethel College Committee are now on the roll of honor.

Dr. M. B. Adams is also there.

No cigarette smokers need apply for ser-

vice under the State Board. Dr. A. B. Gardner laid down the law.

Secretary Entzminger was kept blushing by the many compliments on his Sunday School work.

The Western Recorder and Baptist World lined up together like lovers and at the close both of them pronounced the benediction.

Dr. J. D. Maddox was happiest; for the first time he had a good hour for the Ministers' Aid Society and then Ohio Valley College gave its \$50,000 building and grounds for an "Old Preachers' Home."

Uncle Jerry McGill thrilled the Association with his generous gift for old preachers. The total invested fund and cash is now \$44,939.02. There are now 38 beneficiaries (19 widows, 19 preachers).

Almost the entire Association came forward to thank Dr. Landrum for his great sermon on "There remaineth very much land yet to be possessed."

Editor C. C. Given capped the climax when he had presented to the messengers his handsome paper, the "Hustler," containing Dr. Landrum's sermon.

The Southern Baptist Convention asked Kentucky for \$2,000 for the Student Fund. Prof. A. T. Robertson raised the request to \$2,500 and the General Association gave \$3,000; then he stammered his thanks and hastened to telegraph Dr. Mullins of this largest offering in the life of the Student Fund.

Dr. H. Boyce Taylor was absent, but his sterling books were on hand. He is to preach the sermon next year.

Dr. J. M. Frost, the loving St. John of Southern Baptists, came with smiles and cheering report of the great Sunday School work he created. "Baptists can do their own work best," said he in conclusion.

Editor V. I. Masters spoke for the Home.

(Continued on page 5)

... EDITORIAL ...

W. D. POWELL Editor

THE DIAMOND JUBILEE OF THE GENERAL ASSOCIATION.

The body met in its seventy-fifth annual session in Madisonville, November 12th.

The attendance was the largest in years. Dr. C. M. Thompson was re-elected Moderator and proved himself a wise leader. Dr. W. W. Landrum preached the annual sermon. It was a stirring message. The Lord gave grace, wisdom, unity, and unction of power to his people. We were refreshed by the fellowship of the saints and by the indwelling of the spirit. Liberal plans were devised for the future.

The apportionment for State Missions remains at \$52,000, but fifty thousand will be for the support of our workers. We must enlarge our forces. At a mass meeting for State Missions \$30,120 was provided for the incoming year. This must be paid monthly so that we will not waste mission money paying interest.

Home Missions, Foreign Missions, Sunday School work, Education, Ministers' Aid etc., were all ably presented and elicited the deepest interest.

The importance of State Mission work grows upon our people. It is fundamental. Men and women should remember this cause liberally in their wills. Will it to 'The General Association of Baptists in Kentucky.' The Association adjourned on the 15th to meet in Lexington in 1913.

AN ADVANCE MOVE.

Our Baptist hosts in Madisonville seemed determined to do something for State Missions commensurate with our needs. We have given a half million to education, besides our annual gifts, we have increased the endowment of our Seminary, now we must speak louder for State Missions. We must have at least 125 workers. The talk at the Association must be followed by doing something while at home. The work contemplated is essential to denominational prosperity and to the prosperity of the Lord's cause. What will you do? Brother, you stultify yourself by making excuses for

your inactivity. We need and must have your hearty cooperation. Let us show to the world our love and loyalty to Him, "whose we are and whom we serve."

Will you or your church support one of our workers the present year?

Will you do more for State Missions this year than last? Send us your State Mission money monthly. November and December are exceedingly "dry" months, our treasury is empty. Yes, we have a small debt; help us to remove it and also enable us to pay our workers the last of the month. They greatly need their stipend.

If you need one of the following books write to us: Little Baptist, 50 cents; Grace Truman, 50 cents; Mabel Clement, 75 cents; The Primacy of State Missions, 35 cents; also cheap Bibles and Testaments.

CENTRAL CHURCH, WINCHESTER, DEDICATED.

This church was dedicated November 3rd. The house was filled to overflowing at the morning hour and well filled in the afternoon and at night. The Secretary spoke three times. There was a debt of \$12 000 It was entirely raised and \$104 over. The dedicatory prayer was offered by Pastor J. D. Gwatney.

The church was organized October 27, 1910. Geo. W. Shepherd was the beloved pastor. He died March 11, 1912. The membership had reached 200.

VAN LEAR.

This is an important mining town in the Big Sandy. A mission was opened by Pastor Setzer, of Paintsville. A Sunday school was organized. A good lot has been secured for a house of worship. A meeting has been held and a church organized with twenty-four members. The outlook is full of promise.

The German church in Louisville, after being planted and fostered by the State Board, becomes self-supporting. They are happy, so are we. Churches do much better when they can be financially free.

BAPTIST GROWTH.

When the anti-mission forces left us we continued to grow. Inharmonious, unsympathetic materials hinders rather than helps.

In 1872, when I began to preach, there were 12,013 preachers; today we have 35,175.

In 1790, one to every fiftyseven of the population of the United States was a Baptist; in 1854, the year I was born, one to every thirty; in 1912, one to seventeen. We should grow in grace, liberality and good works.

The total receipts of the Sunday School Board last year were \$300,276.51. A new building will soon be erected.

The way to serve Christ is to serve men. Do you believe it?

So long as Baptists take care of the churches in the country the city churches will be able to take care of themselves. There was formerly an abundance of spiritual life in the country churches. It ought to be so now.

We must go down after the poor and we must go up after the rich; all need to be saved.

The apostolic churches gave themselves to the preaching of the gospel to the masses and the training of an effective ministry.

THE VALUE OF CO-OPERATION.

Seventy-five years ago our General Association was organized. Then we had 35,000 members. To day we have 235,000 white Baptists.

In 1848 the Texas Convention was organized with thirty churches. Today there are 3,400 churches.

In 1707 there were seventeen Baptist churches in the United States. In 1762 there were 1,000 churches, 1,264 ministers and 70,017 members. Many of these were in Kentucky. A hundred years ago there were 2,433 churches, 1,922 ministers, and 189,345 members; twenty years later they had doubled, and numbered 5,322 churches 3,

647 preachers, and 384,859 members. Forty years ago there were 18,397 churches and 1,489,191 members. In this our Diamond Jubilee year there are 49,780 churches, 35,175 preachers and 5,454,198 members. We double in members every twenty years.

Corbin church has called Bro. Pope as pastor. They assure the Board, that if aided another year, they will assume their own support.

LOUISVILLE BAPTIST ORPHANS' HOME

This institution was founded in 1869. Rev. W. C. Van Meter, of New York, delivered a series of lectures in Walnut Street church in April, 1869. Rev. A. T. Spalding was pastor. Two thousand dollars was subscribed. W. L. Weller agreed to pay the rent of the house. They opened with three children. In six weeks there were thirteen. Miss Mary Hollingsworth was made matron. A. S. Woodruff, treasurer of Walnut Street church, was made treasurer. Today it has a splendid permanent home and more than a quarter of a million endowment.

(Continued from page 3)

Board work and he did it almost as well as he writes.

God's patent for giving made easy was explained by Dr. Gatliff in his charming confession on tithing.

Dr. W. E. Hunter's report on Women's Work surpassed all the records.

"Be liberal yourself," said Bro. Jenkins, "if you want your church to give."

Dr. Walter L. Brock hit the center every time and could be heard everywhere.

Several college men cried for a hearing, but it was impossible.

Now convert an Eastern and a Western Kentucky College into Orphans' Homes, and relieve the situation.

The masterly financial statement of the Mission Monthly, which cost Bro. Wohlbold so much was a feature of the State Board report. Read it and subscribe.

Thos. D. Osborne

A GLORIOUS VICTORY.

Kentucky Baptists have achieved a great victory in this, the year of our Diamond Jubilee. Pastors and churches, by loyal support, have made possible our great achievements. Let us thank God and take courage. Greater things must be undertaken for the year on which we enter. We crave enlarged support. Our country churches must rally to our aid.

Agencies continue to multiply in Kentucky. Our Associations are bombarded by "visiting brethren," each urging his cause and insistent on being heard at the best hour. Sometimes there are present three different agents for education alone at the same Association. Complaint comes from the local forces that they have not the time to transact and discuss their legitimate business.

There must be some unifying of forces, or the Moderators and members of our District Associations will assume an ugly mood towards all of us. Business men, by concentration, undertake to save the waste. So must we. There must be a better adjustment, as all interests are important.

Men and women of means should remember the cause of State Missions in their wills. An annuity will be paid if money is given now. Write to us.

Back of the loaf is the snowy flour,
And back of the flour is the mill;
And back of the mill is the wheat and the
shower,
And the sun and the Father's will.

Tennessee Baptists made marked increase in Mission offerings, but closed with a debt of nearly \$5,000 on State Missions.

In Kentucky our growth is sure and steady. No leaps and bounds for us.

Virginia closed the year with all debts on State Missions paid and \$1,500 in the treasury. Virginia has grown rapidly in gifts to State Missions.

The slogan of Kentucky Baptists must

be, "Fifty thousand dollars for State Missions, exclusive of Church building."

Williamsburg, a most generous contributor to education, Home and Foreign Missions was planted and fostered by State Missions.

Long Run Association gives more to State Missions this year than the entire State gave ten or twelve years ago.

State Missions need immediate and substantial aid. Men of Israel, to the rescue!

That excellent book, "The Primacy of State Missions," should be used by all our Mission Study classes. It discusses all the features of State work. It costs only 35 cents.

Editor Kentucky Mission Monthly:

I notice an item in your last issue, entitled "Banner School," in which attention is called to the splendid Sunday School of our brothers at Rineyville, Hardin Co. They do make a great showing, but I believe the Deer Park Baptist school can beat their record just a little. This church is yet a mission, with a membership of seventy. Of that number fifteen are men. The Sunday school has an enrollment of one hundred and fifty-five; average attendance more than one hundred and twenty.

The Men's Glad Hand Bible Class of this school has an enrollment of thirty, with an average attendance of nineteen per Sunday for the year ending October 1st, last.

There may be schools with a better record, if there are we want to know them, that we may do a little better.

J. J. Fields.

A great convention of laymen will be held in Chattanooga February 4th to 6th, 1913. A number of representative men must go from the State we love best. We are assured that there will be no exploiting of special interests.

We have expended a large amount in church building, owing to the character of the structures, but we have not aided as many as last year. We must erect at least 100 during 1913.

The Secretary aided Pastor Doolan in securing \$36,000 for a new church in Bowling Green. It was increased to \$40,000 during the week.

The Secretary aided in dedicating the Central church in Winchester. \$10,104 was raised. The house was filled three times during the day. Pastor and people are happy.

Barbourville church undertakes to walk alone. They have long been aided.

Let us all strive during the next Associational year to bring the glorious truths of God's Word in vital touch with the minds and hearts of the people we meet.

Did you do your best for State Missions last year? All must do better the present year. Pastors and churches must make strenuous efforts to send us funds for State Missions each month. We must pay the faithful workers and we must save interest.

George E. Hays is the efficient chairman of the Lawmen's Movement in Kentucky. He is very efficient.

Dr. Henry Alford Porter has been pastor of Walnut Street church for five years. A large reception was given at the church on the evening of the 15th. Dr. Porter has had great success and is greatly loved by his congregation.

If Baptists preach only what people want to hear, we will not preach the gospel. We cannot preach the gospel without preaching doctrine. The word doctrine occurs in the Bible forty-five times and the word teach one hundred and seventy-eight times.

Dr. A. J. Barton, of Waco, Texas, well says: "One matter that needs to be emphasized over and over again is the action of the Convention urging all brethren to give no countenance to the free lance, adventurous school builder, whether he be an over-zealous pastor, a real estate agent or some brother in need of a position."

ROCK ISLAND LINES

California Oklahoma Arkansas Louisiana
Colorado Kansas Texas Nebraska

Route of the luxurious Golden State Limited to California every day, all the year round, from St. Louis and Chicago via El Paso Short Line, route of the lowest altitudes—NO EXTRA FARE.

THE COLORADO FLYER

Every morning from St. Louis to Denver, Colorado Springs and Pueblo—an electric lighted train of perfect comfort. A delightfully picturesque ride to Kansas City, thence over the short route to the Rockies, make a trip on Rock Island trains a part of your vacation. Just a night on the way. Modern Pullmans, dining and observation car.

THE ROCKY MOUNTAIN LIMITED

Every morning from Chicago; and other fast daily trains from St. Louis, Chicago, Omaha, Kansas City, St. Joseph and Memphis for Colorado, Yellowstone Park and the Pacific Coast. Our booklets, "Under the Turquoise Sky" and "Little Journeys in Colorado", are free for the asking.

If you are going anywhere to the West, write for detailed information as to rates, stop-overs, etc., to

H. I. McGUIRE

District Passenger Agent

38 East Fourth Ave.

CINCINNATI, OHIO

... SUNDAY SCHOOL DEPT ...

Louis Entzminger, Editor.
State Sunday School Secretary,
205 E. Chestnut St., Louisville, Ky.

Field Secretaries and Their Addresses:

N. T. Barnes, Box 101, Lexington, Ky.
J. J. Gentry, 4554 Second St., Louis-
ville, Ky.
Leonard Leavell, Madisonville, Ky.

A-1 SCHOOLS IN KENTUCKY.

Blandville—Rev. D. H. Rice, Pastor; E. R. Ransom, Superintendent.

Berea—Rev. G. B. Reed, Pastor; W. H. Porter, Superintendent.

Fifth Street, Lexington—Rev. Walter L. Brock, Pastor; Frank L. Smith, Superin-
tendent.

Rev. W. R. Hill, Clinton, Ky., reports a class in the Normal Manual. Bro. Hill is among our most active pastors in Teacher Training work.

Rev. J. T. Dougherty, of Georgetown, reports a fine class in Book 2, in the church at Wilmington.

Among the large classes reported in Teacher Training during the month of October, is the one in the church at Greenville, reported by John X. Taylor. Rev. R. H. Tandy is pastor.

Bro. Willie Harlan reports several classes for October in the West Union Association. He is Teacher Training superintendent over there, and is reporting fine interest in the work.

Among the classes reported in October is one in the church at Kevil, Rev. J. B. Rogers teacher of the class.

Rev. W. A. M. Wood reports a fine class in the Milton church. Bro. V. T. Vincent, leader.

Rev. R. C. Kimble reports a class of ten in the Normal Manual in the Baptist church at Oak Grove. Bro. Kimble also reports a class of six in the Big Sinking church.

Bro. F. A. Caldwell, of Newport, reported two classes in the Newport church during October, one in the Manual and one in the Graded Sunday School. Bro. W. G. Everson is the wide awake pastor of this church.

Rev. A. Preston leads a fine class in Graves' Shoals church in the Manual.

A class of ten is reported from Pikeville, Rev. T. J. Rigg, pastor and leader.

Field Secretary N. T. Barnes reports a class taking up the work individually in the New Salem church.

Bro. G. W. Lane, superintendent of the Sunday School of Donaldson church, in Princeton, reports a fine class taking up the Manual.

Field Secretary Barnes reports a fine class from Switzer in the Manual. Bro. W. D. Ogletree, pastor and leader of the class.

Rev. W. H. Howerton reports a fine class in Little Mount church, near Taylorsville, taking the Manual.

Among the large classes reported in October is one in the Taylorsville church, reported by Miss Katie Beauchamp. Dr. J. A. Booth, pastor.

Rev. H. Howerton reports two classes, one in the Campbellsville church of thirty-two taking the Manual, and the other in the Friendship church. Bro. Howerton is one of our staunch supporters.

OUR HONOR ROLL.

All who report to us the enrollment in a class or individually of as many as five in any book in the Teacher Training Course, will be placed on this roll.

Rev. D. H. Howerton, Louisville, Ky.; Rev. W. R. Hill, Clinton, Ky.; Rev. J. T. Doroughty, Georgetown, Ky.; John X. Taylor, Greenville, Ky.; Rev. Willie Harlan, Barlow, Ky.; Rev. W. P. Stuart, Elizabethtown, Ky.; Rev. J. B. Rogers, Kevil, Ky.; Rev. W. A. M. Wood, Sulphur, Kk.; Rev. R. C. Kimble, Monticello, Ky.; F. A. Caldwell, Newport, Ky.; Rev. A. Preston, Patrick, Ky.; Rev. J. T. Rigg, Pikeville, Ky.; N. T. Barnes, Lexington, Ky.; G. W. Lane, Princeton, Ky., R. F. D.; Rev. W. D. Ogletree, Switzer, Ky.; Miss Katie Beauchamp, Taylorsville, Ky.; J. J. Gentry, Louisville.

Standing of the Five Highest States in Teacher Training, November 1, 1912

Normal Diplomas—Kentucky, 2,037; Georgia, 1,723; North Carolina, 1,602; Texas, 1,571; Mississippi, 1,316.

Red Seal Awards—Kentucky, 238; Georgia, 155; Texas, 133; Alabama, 123; Tennessee, 116.

Blue Seal Awards—Kentucky, 157; Texas, 76; Georgia, 73; Alabama, 72; Tennessee, 61.

Five States Leading in Teacher Training Work, in Number of Normal Diplomas, Red Seal Awards, Blue Seal Awards, Received by Each from October 31, 1911, to October 31, 1912:

Normal Diplomas — Kentucky, 1,101; Georgia, 951; Texas, 798; North Carolina, 787; Mississippi, 528.

Red Seal Awards—Kentucky, 173; Texas, 96; Alabama, 74; Tennessee, 71; Mississippi, 45.

Blue Seal Awards—Kentucky, 107; Texas, 60; Georgia, 49; Alabama, 48; Tennessee, 34.

Our Blue Seal Graduates During the Month of October.

Rev. John Mein, Cadiz; G. W. Duncan, Clinton; A. E. Burks, Covington; Miss Clara Duncan, Covington; Rev. R. H. Tolle, Georgetown; Fred J. Allender Keene; Miss Ora Abbott, Lexington; Miss Lula O. Green, Louisville; Mrs. Monta M. McFarland, Louisville; J. R. Rutter, Paducah; C. L. Hall, Somerset, Ky.; Louis Entzminger, Louisville.

Standing by Associations in the Number of Normal Diplomas.

Long Run, 373; North Bend, 185; Elkhorn, 177; Daviess County, 139; West Union, 115; Blood River, 76; Nelson, 67; Bell County, 63; Bethel, 58; Campbell County, 56; Wayne County, 53; Pulaski, 49; South District, 45; Ohio County, 43; West Kentucky, 39; Bracken, 35; Ohio Valley, 34; Crittenden, 32; Tate's Creek, 27; Baptist, 26; Little River, 26; Franklin, 23; Graves County, 23; North Concord, 22; Ohio River, 20; Concord, 20; Breckenridge, 19; Sulphur Fork, 18; Enterprise, 16; Boone's Creek, 14; Oneida, 12; Laurel River, 12; Warren, 12; Lynn, 11; Liberty, 11; Shelby County, 10; Muhlenberg, 10; Goshen, 8; Severn's Valley, 8; Simpson, 7; Russell's Creek, 8; White's Run, 6; East Lynn, 5; Union, 5; Ten Mile, 4; Central, 3; Bay's Fork, 2; Greenup, 2; Little Bethel, 2; Salem, 2; Three Forks, 1; Gasper River, 1; Freedom, 1; Mt. Zion, 1; Owen County, 1; Cumberland River, 1.

LET ALL PASTORS AND SUNDAY SCHOOL WORKERS TAKE NOTICE.

If Kentucky is to maintain her present standing at the head of the Teacher Training work between now and May 1st when the Southern Baptist Conventional year closes, it will be absolutely necessary that we all turn our hands vigorously to the task of projecting the work between now and that time. I hope that we shall be able to go to St. Louis to the Convention in May, having made the greatest progress ever reported in Teacher Training work by any State. Let us not wait until March or April to get busy. Begin now and let us be intensely active up to the last day. Report all enrollments through this office, where proper record will be made and a copy forwarded to the Nashville office.

**THE
HENDERSON
... ROUTE ...
L. H. & ST. L. RY.
LOUISVILLE
TO
ST. LOUIS
9:21 Every Night**

**For Rates or Further Information,
Address**

**E. M. WOMACK, R. F. PENN,
City Pass. Agt. Trav. Pass. Agt.
S. W. Cor. 4th & Main
LOUISVILLE, - KENTUCKY**

... WOMEN'S DEPARTMENT ...

Central Committee.

Miss E. S. Broadus Chairman
1227 Third Avenue.

Mrs. B. A. Rees Treasurer
2326 Longest Avenue.

Miss Clifford E. Hunter Secretary
Box 396.

THE BRIGHT SIDE.

Our year ending November 1st shows much to encourage, and we are thankful for all that has helped to make it a successful year. Our receipts for Foreign Missions show an increase in regular contributions. Last year, the special Jubilee gifts amounted to \$3,191, while this year's shows only a third as much, as was to be expected.

For State Mission we have given \$76 more than we undertook to raise, and for Students' Fund at the Training School more has been paid in. A very great cause of thankfulness is the large number of new societies, twice as many as we have had before. 75 W. M. S., 20 Sunbeams, 15 Y. W. A.'s and 50 R. A.'s. And best of all, our Kentucky women are awakening as never before to a sense of their duty, and the possibilities of missionary societies. For the faithful and devoted service of our Secretaries, Vice-Presidents and many individuals, we give thanks. Miss Kathleen Mallory, the new Corresponding Secretary of Women's Missionary Union, writes that she hopes November may indeed be a month of thanksgiving to us, as we see the work advancing in our State. We are making a joyful beginning.

ANOTHER SIDE.

We are far behind in contributions to the Home Mission Board and to Mountain schools in general. Our contributions are not keeping pace with our increase in numbers. The young peoples' societies do not increase as fast as those for our women. We still have much land to possess, and there are giants in the way. But let us not lose heart nor patience, but like Caleb and Joshua, march boldly on to win our inheritance.

Next May we want to join with all our sister societies in other States in one grand "Jubilate" of praise for twenty-five years of Woman's Missionary Union. In the spirit of the One Hundredth Psalm, let us make a joyful noise unto the Lord, and enter into his gates with a thank-offering. Let us "begin right now to view life in the spirit of rejoicing that each day may be made glorious for us and for others." (Miss Mallory.)

Much encouragement comes often unexpectedly. Let me quote from two letters, one from a Vice-President, telling of conducting an Associational meeting under difficulties, and the second to this Vice-President from a lady in one of the societies. The Vice-President says they met in a private home, after walking over muddy roads, and many stood or sat on the floor. Nevertheless, they seemed to enjoy the meeting more than any they have had. The other writer tells of more interest being taken in the missionary causes as a result of this meeting, several speaking earnestly to her on the subject. One who seemed interested, so doubted her ability. "Country women as a rule are very timid, and need some one to urge them forward. It was so with our ladies here. At first they shrank, but now they come out quite bravely with the work." (Town ladies are just as timid.) "I do so wish that many of our country and village churches could be awakened on the subject of missions, as our little town has been aroused. We have an interesting society that has grown from a mere handful at the start. I think the impetus was given when the Association was held in our midst though we did not organize until sometime later. So, my dear friend, do not be discouraged, several societies may arise as the result of your prayers and earnestness—the good seed sown must yield a harvest."

THE CALENDAR OF PRAYER FOR MISSIONS.

Send to Miss Hunter now for Calendar 15 cents a piece, including postage. Give them to your friends, and get others to buy. They are more helpful than ever. Added to the familiar features is a new

one, of daily readings suggested, being on the subject of prayer. If we study these verses, learn the one indicated for the day, and offer fervent prayer for the missionary, we cannot fail to grow in grace, and in the knowledge of our Lord Jesus Christ.

A question often asked is why is it better to send our money to the Central Committee? My answer is, in order that we may carry out the requests of the Boards. They ask us to support women missionaries, schools, hospitals and other enterprises. Unless the money given by the woman's societies is gathered together and reported to the Boards as their gift, who will know whether we have done our part? In the interest of good order, and a fair showing for Kentucky women, let the Central Committee know what you give.

E. S. BROADUS.

ITEMS FROM THE MADISONVILLE MEETING.

The annual meeting of the Woman's Missionary Union of Kentucky was one of the largest and most enthusiastic in the history of our State organization. Many things combined to make it a great meeting and to make one feel that a forward step was made in the progress of the work. There were present sixty delegates, representing every section of the State and many more visitors. What an inspiration to look into that crowd of strong, intelligent, earnest faces and realize they were there for the sole purpose of considering the work the Baptist women of Kentucky are seeking to do for the furtherance of the Kingdom of God!

The officers elected for the coming year were: President, Mrs. W. E. Mitchell Adairville; Vice President, Miss Maud Marcum, Cannelburg; Secretary, Miss Elizabeth Garrett, Oak Grove; Auditor, Miss Willie Lamb, Louisville.

Let us rally to their support praying for an even greater year's work to report at the Lexington meeting, November, 1913.

The place of our W. M. U. Training School

in Louisville in the denominational life was splendidly shown by the work of three of its graduates, Misses Lide, Baker and Hunter. Miss Lide, of South Carolina, who spoke so beautifully on "What the Training School Has Meant to Me," is at work under the Baptist Sunday School Board, preparing the new graded lessons for the Junoir Department; Miss Baker, of Kentucky, who discussed forcibly the needs of our Mountain School at Barbourville, is herself a teacher in Barbourville Institute; and Miss Hunter, of Georgia, is secretary and field worker of the Kentucky Central Committee. The W. M. U. of Kentucky was fortunate in having thus brought before it an evidence of the fruits of our own Training School.

The Vice Presidents' Conference on Thursday morning was filled with earnest discussion of the problems of our work over the State. Fifteen Vice Presidents were present: Mrs. J. C. McClary, South District Association; Mrs. O. F. Walker, Ohio Valley; Miss Margaret Anderson, North Bend; Miss Maud Marcum Greenup; Mrs. Otie Wood, Little River; Miss Emma Bailey, Long Run; Mrs. B. G. Pearce, Sulphur Fork; Mrs. A. C. Bond, Goshen; Mrs. B. F. Proctor, Warren; Mrs. Robert Chappell, Mt. Zion; Mrs. J. W. Stevenson, Elkhorn; Miss Mattie Wilson, Nelson; Mrs. E. L. Howerton, Muhlenberg; Miss Elizabeth Garrett, Bethel; Mrs. L. A. Wilson Logan County. Several members of the Central Committee and a number of the delegates were also present and added to the meeting. Not all of the problems of our Associational work were considered, not all of the questions raised were discussed, because of lack of time but the Conference resulted in a realization of the needs and opportunities of our State work and a sense of fellowship in service among our Vice Presidents which will make for more effective work during the coming year.

All rejoiced over the gift of \$2,776 to State Missions last year. After discussion the Vice Presidents voted to accept an apportionment of \$3,500 for the coming year. The needs of our own State work are pressing in upon us. Let each W. M. S. and Y.

W. A. joyously undertake its share of the \$724 increase.

The address, "Our Silver Jubilee," by Miss E. S. Broadus and a large calendar and silver poster brought before the meeting the fact that 1913 marks the twenty-fifth anniversary of the Woman's Missionary Union, auxiliary to the Southern Baptist Convention. From Baltimore comes news of large plans for the celebration at the W. M. U. Convention in St. Louis, May, 1913, and throughout the States of the Southern Baptist Convention. A jubilate committee, consisting of Mrs. Phil Miller, of Owensboro; Miss Anderson, of Erlanger, and Miss Marcum of Catlettsburg, was appointed to co-operate with the W. M. U. committee in carrying out the plans within Kentucky.

One of the most interesting parts of Wednesday's programme was the presentation of the Associational Banner. During the year the Central Committee decided to offer an Associational Banner to be awarded each year to the Association leading in a line of progress to be designated year by year. For this year the award was given to the Association reporting the largest list of new organizations and the beautiful lavender and silver banner was won by Sulphur Fork Association, which led with a list of ten new societies.

The thirty-second annual report of the Central Committee showed the following total contributions for the year:

Foreign, \$12,193.70; Home, \$4,717.06; Bible Fund, \$96.97; State, \$2,776.03; Mountain Schools, \$235.78; Margaret Home, \$112.05; Colored Work, \$73.55; Enlargement, \$396.39; Current Expense, \$466.61; Students' Fund, \$344.83; Miscellaneous, \$643; Boxes, \$1,305.49. Grand total, \$23,361.46. This includes: Christmas Offering, \$1,411.05; Jubilee, \$1,155.91.

RECEIPTS FOR OCTOBER.

Baptist Ass'n—J. B. S., Tr., \$103.56; Lawrenceburg S. S., S. M. McC., \$16.25; New Hope ch., E. R., \$2.85; Lawrenceburg ch., Miss M. P., \$72.51.

Barren River Ass'n—R. H. S., \$2.75; Summer Shade ch., T. F. G., \$8.

Bethel Ass'n—Auburn S. S., A. M. McC., \$14.01; H. H. A., Tr., \$536.35; Palestine S. S., W. H. S., \$1; New Union ch., J. A. L., \$33.44; Pembroke S. S., H. H. A., Tr., \$62.02; Guthrie ch., M. D. D., \$28.70; Bethel S. S., S. B. A., \$4.37; Locust Grove S. S., E. T. S., \$2; Olivet ch. W. M. U., Mrs. C. W. G., \$10; Auburn ch., T. J. M., \$53.15; Pembroke ch., H. H. A., \$23.75; Elkton ch., H. H. A., \$11; Pleasant Hill ch., H. H. A., \$6; Sinking Fork ch., H. H. A., \$6.98; H. H. A., Tr., \$239.30; Mt. Gilead ch., R. B. L., \$15; Adairville ch., Dr. W. E. M., \$30.

Blackford Ass'n—Panther Creek S. S., R. M. C., \$3.56

Blood River Ass'n—Pleasant Valley ch., W. A. M. W., \$7.10; Cherry Corner, J. L. P., \$36.42; New Bethel, \$6.25; Sinking Springs, J. L. P., \$6; Salem, J. L. P., \$20; Kirksey, J. L. P., \$42.25; West Fork, J. L. P., \$1.76; Bethlehem, J. L. P., \$3.75; Scott's Grove, J. L. P., \$13; Calvary, J. L. P., \$5.60; Murray ch., J. L. P., \$1,124.66; Murray ch., J. L. P., \$82.50; Exchange, J. L. P., \$75.50

Boone's Creek—Beattyville ch., J. I. W., \$5; First Church Winchester, W. P. H., \$145.85; First Church Winchester, S. S., \$15; Central ch., Winchester, \$14.65.

Bracken Ass'n—Mt. Olivet S. S., H. C. C., \$4; Sharpsburg S. S., J. J. M., \$6; First ch., Carlisle, Rev. B. F. S., \$36.53; Farmers ch., Rev. H. M. E., \$5; Mt. Sterling ch., W. T. T., \$58; Ewing ch., J. E. F., \$8.15; T. F. G., Tr., \$75.

Breckenridge Ass'n—Brandenburg ch., Mrs. L. M., Tr., \$6.30; W. C. M., Tr., \$28.76; Cloverport ch., W. C. M., Tr., \$21; English ch., W. C. M., Tr., \$2.80; Hardinsburg ch., J. J. W., \$4.42; Cloverport ch., E. O. C., \$2.

Campbell Co.—Newport S. S., Miss L. M., \$1; Alexandria S. S., E. H., \$2.75; Bellevue, B. H. P., \$25; Bellevue, W. A. M., \$13.42; R. E. K., \$205.60.

Central Ass'n—Mackville ch., J. O. B. Tr., \$12; Mackville S. S., J. O. B. Tr., \$37.54; Lebanon ch., J. O. B. Tr., \$3.

Concord Ass'n—Monterey ch., Rev. J. C. C., \$99.05; J. B. H., Tr., \$964.50; Locust Ridge ch., J. B. H., \$15.25; Union Grove T. P. E., \$3; Dallasburg ch., J. B. H., \$21.61

Daviess Co. Ass'n—South Hampton S. S., J. C. H., \$8.75; Third Bap. ch., J. D. M., \$10; Buck Creek ch., J. C. L., \$3.86; 1st ch.

Add These Books to Your Library

GOD'S PLAN WITH MEN

By T. T. Martin, Evangelist

An Interpretation of Salvation

Contents:

- I—Sin and Its Punishment—God's Justice—Degrees in Hell.
- II—Sins Never Excused, nor the Penalty Ever Remitted without Redemption.
- III—Jesus the Christ as Sin-Bearer—God's Justice and Love.
- IV—The New Relation—The New Motive.
- V—The Sins of God's Children—Forgiveness Chastisements.
- VI—Rewards—Degrees in Heaven.
- VII—How to be Saved—Repentance and Faith.
- VIII—The Meaning of "Believe On" or "Believe In" Christ.
- IX—External Life the Present Possession of the Believer.
- X—Development of Character in the Redeemed.

Price - - - \$1.00 Postpaid

KNOWING THE SCRIPTURES

The second edition of Dr. A. T.

Pierson's last book now ready

Nearly 500 pages literally packed with help for all Bible readers. Fifty laws of Bible study and examples of each. This work should be in every Christian's Library. It's a book you will need to refer to often.

Attractively bound in cloth with gold stamp
Net, \$1.00

The Singular Actions

of Consistent Christians

or

The Nonsuch Professor

In His Meridian Splendor

BY REV. WM. SECKER

This is a wonderful book. At whatever page you open it, your eye lights upon pithy aphorisms that combine the sententiousness of Benjamin Franklin with the sweet, holy savour of Samuel Rutherford. It contains hundreds of bright seed-thoughts like this: "This world is very large in our hopes, but small in our hands.

Price 50c

Postage 10c

The former price was one dollar. This is the book which Dr. Eaton so highly commended.

The Greatest Song Book for Baptists

THE NEW EVANGEL

SHAPED OR ROUND NOTES

Prices each - Cloth \$0.35 postpaid Limp \$0.25 postpaid
 " per doz. " 3.50 not postp'd " 2.25 not postp'd
 " per 100 " 25.00 " " " 15.00 " "

Send all your orders for books to the

BAPTIST BOOK CONCERN, Incorporated

LOUISVILLE, = = = = = KENTUCKY

Owensboro, W. H. R., \$117; Calhoun ch., W. H. R., \$11.27; Island ch., W. H. R., \$3.50; Greenbrier ch., W. H. R., \$13.40.

East Lynn Ass'n—J. T. M., \$55.16.

East Union—Lot ch., F. R. W., \$15.09; Mountain Ash ch., S. S. B., \$13.

Edmonson Ass'n—S. T., Tr., \$64.52.

Elkhorn Ass'n—Midway S. S., F. G. S., 25c; Millville ch., C. S. H., \$3.06; Bryan Sta. ch., F. M. J., \$1.50; 1st ch., Lexington, Dr. J. W. P., \$20; 1st ch., Georgetown M. T., \$100; 1st ch., Lexington, Dr. J. W. P., \$578; Sadieville ch., Z. J. A., \$30.70; 1st ch., Lexington, M. T., \$125; 1st ch., Lexington, Dr. J. W. P., \$10; 1st ch., Lexington, M. T., \$50.

Enterprise Ass'n—Allen ch., T. J. C., \$10; Pikeville ch., T. J. R., \$36; Prestonsburg ch., W. D., \$50.

Franklin Ass'n—Pleasant Ridge S. S., L. M. D., \$2; J. H. M., \$55.92; Mt. Carmel ch., Rev. C. C. W., \$13.25; North Fork ch., T. D. J., \$14.50.

Freedom Ass'n—Salem ch., Miss S. W. M., \$2.25.

Gasper River Ass'n—W. A. K., Tr., \$198.38; Monticello ch., J. H. T., \$6.

Goshen Ass'n—J. W. L., Tr., \$139.65; Caneyville ch., W. B. M., \$15.

Graves Co. Ass'n—1st ch., Mayfield, W. M. W., Tr., \$289.59; W. M. W., Tr., \$655.53; W. M. W., Tr., \$8.25.

Greenup Ass'n—Ashland ch., R. M. M., \$56.20; Wilson Creek S. S., T. G., \$7.30; Elizabeth Jarrell ch., S. F. R., \$1; Louisa ch., W. H. A., \$4.07; 1st ch. Russell, J. F. Y., \$20.40; West ch., Ashland Rev. D. W., \$7.01.

Liberty Ass'n—Rowlets ch., Rev. A. A. S., \$10; J. L. B., Tr., \$385.57; 1st ch. Glasgow, W. H. W., \$15.

Little Bethel Ass'n—W. J. B., Tr., \$15.11; Sharon ch., T. T. M., \$65.

Little River Ass'n—C. M. W., Tr., \$500; W. A. M. W., \$7.16.

Logan Co. Ass'n—Elk Lick ch., D. P. B., D. P. B., \$1.20; Elk Lick ch., D. P. B., \$3.

Long Run Ass'n—Third Ave. ch. C. S. W., \$31.89; Parkland S. S., C. M. H., \$10.30; 36th and Grand, J. S. R., \$3.60; Immanuel ch., Dr. R. G. F., \$43.19; 22nd and Walnut St. ch., L. M. R., \$74.16; Glenview S. S., W. G., \$10; Broadway ch. G. W. N. \$100; Walnut St. Y. W. A., 12; Kosmosdale ch.,

C. K. H., \$3.85; Salem ch., W. E. P., \$4.72; Broadway ch., T. J. H., \$100; West Broadway ch., J. A. C., \$25; Highland Park ch., Rev. A. F. C., \$18.88; Beechmont ch., W. J. J., \$10; 9th and O St. ch., B. S., \$1.55; Kosmosdale ch., C. K. H., \$5.15; Carlisle Ave. ch., Rev. T., \$7.15; Mt. Washington ch., E. S. B., \$17; Deer Park ch., J. J. F., \$7.60; Calvary ch., W. H. J., \$26.20; Third Ave. ch., C. S. W., \$26.44; Fourth Ave. ch., O. W. M. C., \$78.38; Beechland ch., E. J. B., \$15.50; Beechland S. S., E. J. B., \$4.50; East ch., W. O. F., \$6.20; Knob Creek ch., W. E. P., \$1.10; Highland ch., W. E. K., \$100; Crescent Hill ch., W. P. K., \$121.69; Calvary ch., W. H. J., \$22.42; W. M. U., Mrs. G. W. L., \$22.50; Immanuel ch., Dr. R. G. F., \$39.86; Broadway ch., T. J. H., \$136.50; Crescent Hill ch., M. P. K., \$26.42; Broadway Baraca Class, B. W., \$10; M. P. Park, J. J. F., \$63.80; Crescent Hill, M. P. K., \$3.50; Salem S. S., Mrs. W., \$10; Hazelwood ch., J. S. L., \$2.30; Walnut Street ch., E. A. C., \$389.40; Chestnut St. ch., L. C., \$28.45; Walnut St. ch., H. C. McG., \$5; Crescent Hill ch., M. P. K., \$7; East ch., H. M. B., \$40; Baptist Tabernacle ch., G. C. D., \$100.50; 18th St. ch., B. V. B., \$4.50; Hopewell ch. S. S., E. P., \$1; Walnut St. ch., W. D. P., \$31.75; Walnut St. ch., E. C. F., \$31.75; Clifton ch., J. A. C., \$45; 22nd and Walnut St. ch., C. H. N., \$11.98; Beechmont ch., J. J. G., \$10; East ch., H. M. B., \$10; West Broadway S. S., J. A. C., \$5; Clifton ch., J. A. C., \$1.

Lynn Ass'n—Buffalo S. S., G. B. B., \$2.35.

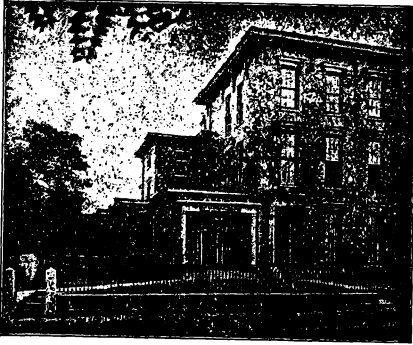
Mt. Zion Ass'n—Gray's ch., F. R. W., \$30.71; 1st ch. Corbin, E. W. R., \$11.25; 2nd ch., Williamsburg, W. H. B., \$6.60; Corbin ch., G. W. N., \$1.50; Rockhold ch., M. W., \$9.07; Corinth ch., G. W. N., \$5; Flat Creek ch., G. W. N., \$5; Sand Stone, G. W. N., \$2.55; Mt. Pisgah, G. W. N., \$1; Chapel Grove, G. W. N., \$1.50; G. W. N., Tr., \$5.80; Williamsburg ch., E. F. W., \$388.51.

Muhlenburg Ass'n—T. S. B., Tr., \$100.

Nelson Ass'n—T. P. S., \$468.40; Shepherdsbille ch., Rev. W. B., \$12.50; Cedar Creek ch., Rev. O. J. C., \$10.45; Cox's Creek ch., Rev. O. J. C., \$50; Mill Creek ch., E. L. B., \$3.30; Bardstown ch., H. H. M., \$75; Riverview ch., T. B. R., \$3.

(Balance of October receipts in next issue)

A CHAPEL FOR PATRONS



LEE E. CRALLE

Funeral Director

S. W. Cor. 6th and Chestnut Sts.
Telephone Main 430

LOUISVILLE, - KENTUCKY

MOLL & CO.

Incorporated

Printers, Binders

Publishers

120 S. First St. Louisville, Ky.

Home Phone 351 Correspondence Solicited

BLUM ART GLASS CO.

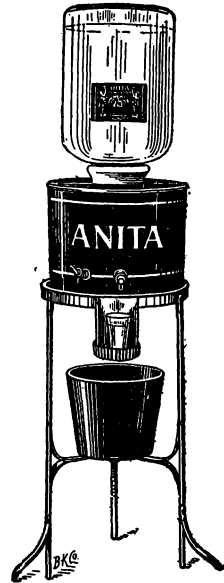
INCORPORATED

Maker of Church Windows

640 Third St. Louisville, Ky.

“ANITA”

AMERICAN LIGHTEST WATER
Always Pure, Fresh & Invigorating



THE BEST COOLER ON THE MARKET

Anita Spring Water Co.

INCORPORATED

PHONES { Home 4520
Cumb. M. 1468-A

Our New Plant, 210-212 Pearl St.
LOUISVILLE, KY.

-----WE ARE-----

MANUFACTURERS OF

MONUMENTS

Of High Class, But Moderate Prices

Peter-Burghard Stone Co.

SALESROOM

317 W. Jefferson St.

PLANT

13-14 Maple St. Louisville, Ky.

FLORIDA

CUBA, CALIFORNIA, MEXICO, COLORADO, NEW MEXICO, ARIZONA
and many other

Winter Resorts

Best reached by

Southern Railway

Operating through trains carrying high class coaches, Pullman Drawing room sleeping cars and Southern Railway Dining cars service A La Carte

ROUND TRIP TICKETS

Now on sale; good returning until late next Spring. For detailed schedules, Maps, Winter Homes folders, giving names of Hotels Boarding Houses, etc., Pullman reservations, etc., write to or see nearest Southern Railway representative, Persons in Kentucky and Southern Indiana address

B. H. TODD, District Passenger Agent, 125 South Fourth St. Louisville, Ky.

A Valuable Book **FREE**

It tells you how to raise better, bigger
crops with less work and
more profit.

Write for it TODAY

TELLS you everything you would like to know about field seeds; how to select high-grade seeds, sow, fertilize and harvest Clover, Alsike, Blue Grass, Orchard Grass, Timothy, Red Top and other field seeds in a way that really makes farming pay.

By all means send for it today. It's free. So is our special book on Orchard Grass which you certainly ought to have right now.

Write for both books and name of "Gold Medal" seed dealer in your locality.

LOUISVILLE SEED CO.

104 South Second St.

LOUISVILLE, KY.

