

Kentucky Mission Monthly

OFFICIAL ORGAN OF KENTUCKY BAPTISTS

Entered Feb. 5, 1903, at Louisville, Ky., as Second-class matter, under act of Congress, March 6, 1879.

AUGUST, 1912

25 Cents a Year

W. D. POWELL,	- - - - -	EDITOR
LOUIS ENTZMINGER,	-	SUNDAY SCHOOL EDITOR
MISS E. S. BROADUS,	-	EDITOR WOMAN'S DEPT.
A. E. WOHLBOLD,	- - -	BUSINESS MANAGER

General Association of Baptists in Kentucky Officers

C. M. Thompson, Moderator F. D. Perkins, Asst. Moderator
M. E. Dodd, Asst. Moderator John L. Hill, Sec'y. A. E. Wohlbold, Asst. Sec'y.

Executive Board

J. F. Griffith, Chairman, Louisville, Ky.	E. C. Farmer, Rec. Sec. Louisville, Ky.	
Thos. D. Osborne, Treas. Louisville, Ky.	A. L. Crawley, Asst. Sec. Louisville, Ky.	
J. A. Booth, Taylorsville	A. Gatliff, Williamsburg	M. E. Staley, Fulton
W. T. Bruner, Louisville	J. S. Gatton, Glendale	B. F. Swindler, Carlisle
Lee E. Cralle "	W. E. Hunter, Princeton	N. C. Shouse, Louisville
R. L. Carter "	W. W. Landrum, Lou'ville	W. M. Stallings, Smith's Gr.
J. D. Coleman "	W. E. Mitchell, Pembroke	H. B. Taylor, Murray
S. J. Cannon "	T. H. Plemmons, Covington	C. M. Thompson, Hopkinsville
E. O. Cottrell, Owensboro	J. W. Porter, Lexington	J. M. Walker, Crestwood
G. P. Comer, Louisville	W. W. Payne, Franklin	J. S. Wilson, LaGrange
C. W. Elsey, Cynthia	H. A. Porter, Louisville	J. W. Waldrop, Owenton
F. W. Eberhardt, Frank't	W. J. Puckett, Cave City	Wallace Wear, Louisville

Baptist State Board of Missions

Rev. W. D. Powell, Cor. Secretary; 205 E. Chestnut St., Louisville, Ky.
Louis Entzminger, Sunday School Secretary; 205 E. Chestnut St., Louisville, Ky.

Kentucky Central Committee

Miss E. S. Broadus, Chairman; 1227 Third Ave. Louisville, Ky.
Miss Margaret B. Webster Secretary Box 396, Louisville, Ky.

Baptist Minister's Aid Society

J. D. Maddox, Corresponding Secretary; 508 Daviess St., Owensboro, Ky.

Baptist Education Society of Kentucky

Rev. M. B. Adams, Corresponding Secretary; Frankfort, Ky.

Orphans' Home

T. J. Humphreys, Treasurer, 400 Equitable Bldg., Louisville, Ky.

Published Monthly at 205 East Chestnut St., Louisville, Kentucky

The Southern Baptist Theological Seminary

LOUISVILLE, KENTUCKY

Next session of eight months opens Oct. 1. Excellent equipment; able and progressive faculty, wide range of theological study. If help is needed to pay board, write to Mr. B. Pressley Smith, Treasurer of Students' Fund.

For Catalogue
or Other Information, write to **E. Y. MULLINS, President**

ROCK ISLAND LINES

California Oklahoma Arkansas Louisiana
Colorado Kansas Texas Nebraska

Route of the luxurious Golden State Limited to California every day, all the year round, from St. Louis and Chicago via El Paso Short Line, route of the lowest altitudes—NO EXTRA FARE.

THE COLORADO FLYER

Every morning from St. Louis to Denver, Colorado Springs and Pueblo—an electric lighted train of perfect comfort. A delightfully picturesque ride to Kansas City, thence over the short route to the Rockies, make a trip on Rock Island trains a part of your vacation. Just a night on the way. Modern Pullmans, dining and observation car.

THE ROCKY MOUNTAIN LIMITED

Every morning from Chicago; and other fast daily trains from St. Louis, Chicago, Omaha, Kansas City, St. Joseph and Memphis for Colorado, Yellowstone Park and the Pacific Coast. Our booklets, "Under the Turquoise Sky" and "Little Journeys in Colorado", are free for the asking.

If you are going anywhere to the West, write for detailed information as to rates, stop-overs, etc., to

H. I. McGUIRE
District Passenger Agent
38 East Fourth Ave. CINCINNATI, OHIO

Pastor Arthur Daily, of Eubank, recently held a meeting for the State Board at Concord church, Flat Lick, Ky. One hundred dollars was raised for the support of a pastor, and they are trying to get the service of a good man.

We hear cheering words in regard to the effective work being done by Elder Jas. L.

Dotson in Freedom Association. He preached a number of days at Central Union church. There were seven professions of faith and seven additions to the church, five by baptism and two by letter. The brethren write that they greatly appreciate his plain, doctrinal preaching.

The Kentucky Mission Monthly

"LET HIM THAT HEARETH SAY COME"

VOL. XII.

AUGUST, 1912.

No. 4.

"THE RESOURCES OF GOD BELONG ONLY TO THOSE WHO UNDERTAKE THE PROGRAM OF GOD."

The twenty-three August Associations have been at work the years shown; they meet on the dates given below, and their gifts per member to missions and total contributions last year were as subjoined:

- Baptist—86 years; August 29; missions, \$0.09; contributions, \$2.13.
Barren River—82 years; August 21; missions, 7c; contributions, 50c.
Bell County—16 years; August 30; missions, 13c; contributions, \$2.51.
Bethel—87 years; August 5; missions, \$1.33; contributions, \$8.78.
Bracken—114 years; August 7; missions, 71c; contributions, \$4.57.
Campbell County—85 years; August 21; missions, 77c; contributions, \$6.89.
Central—23 years; August 27; missions, 47c; contributions, \$4.01.
Crittenden—52 years; August 14; missions, 1c; contributions, \$1.45.
Daviness County—68 years; August 7; missions, 67c; contributions, \$4.99.
Enterprise—24 years; August 9; missions, 40c; contributions, \$1.77.
Franklin—98 years; August 21; missions, 56c; contributions, \$2.99.
Gasper River—101 years; August 20; missions, 12c; contributions, 93c.
Liberty—72 years; August 7; missions, 23c; contributions, \$2.79.
Union—99 years; August 28; missions, 83c; contributions, \$4.95.
Logan County—8 years; August 14; missions, 19c; contributions, \$1.29.
Muhlenberg County—5 years; August 28; missions, 37c; contributions, \$2.59.
Ohio County—11 years; August 14; missions, 18c; contributions, \$1.85.
Ohio River—29 years; August 21; missions,

55c; contributions, \$3.88.

Salem—126 years; August 21; missions, 19c; contributions, \$1.88.

Shelby County—40 years; August 15; missions, 51c; contributions, \$4.03.

South District—110 years; August 20; missions, 52c; contributions, \$4.25.

South Kentucky—66 years; August 13; missions, 15c; contributions, \$1.59.

Tate's Creek—118 years; August 27; missions, 32c; contributions, \$4.01.

Four-fifths of our present congregations were planted and fostered by State Mission funds; and the net gain in membership each year equals the increase made in our State Mission churches. Just in proportion as the work of State Missions has been pressed has our denomination advanced.

Press State Mission collections till we meet in triumph at Madisonville.

Our books close October 31st.

T. D. OSBORNE.

A WORD TO THE DEAD HEADS.

Text—Mark 11:13: "Nothing but leaves."

The Jews were a great nation, and had a great opportunity, and God expected great things of them; but when he came he found nothing but leaves. Result, a great curse.

First—Now we are a great nation and have great opportunities and God expects great things of us. We are fig trees planted in rich ground (US). God does not need shade trees, and for us to have a reward we must bear fruit. Here is our garden to bear fruit in at this age:

1. District Missions—Are you helping to evangelize your home, your county, your Association? If not, when the Judgment day comes what will be the result? Jesus expecting fruit of you and found nothing but leaves. What more can it be if you are not giving?

2. State Missions—Over a million folks in Kentucky not saved; perhaps half of them

not preached to, only once and a while, for lack of funds to furnish enough of men to reach them. Are you helping your part, or in the end will it be said of you, 'Nothing but leaves'? That is what it is now unless you are giving liberally.

3. Home Missions—The United States; millions of people not saved, hundreds going to the lower place every day; God expecting to help; and if you are not paying to Home Missions, it will be in the end, "Nothing but leaves."

4. Foreign Missions—Matt. 28:19 "Go and make disciples of all nations," etc. God has made you able to do this through the Foreign Mission Board, and gave you health, strength and ability to go, by giving to the Board, thus being party to the preaching in all the world. Are you giving to them? If not when the examination day comes what can you expect as a reward for your work, "nothing but leaves."

5. In Kentucky a large number of churches do not give anything for missions, and a large number of members of nearly all churches give nothing; this being true, what can you expect Jesus to say He found in you? It could only be "nothing but leaves."

An everlasting curse followed the fig tree; and I believe that the Bible will bear out the idea that no man can ever enter the Better Land who is so close and mean as to not have a spirit for mission work, love for others. How is your life? Love and missions, or "Nothing but leaves"?

A. A. ADKINS.

Grayson, Ky.

BLACKFORD ASSOCIATION.

This body met with Yelvington church, which celebrates its centennial next year. The attendance on the Association was large, the hospitality was bountiful and the spirit of brotherly love pervaded the body. We believe they will give generous aid to the support of our State work as well as to Home and Foreign Missions. They will meet next year at Blackford church. The moderator and clerk had given such entire satisfaction that they were re-elected.

... EDITORIAL ...

W. D. POWELLEditor

DISTRICT ASSOCIATIONS.

The meetings of our District Associations afford a splendid opportunity to create a proper denominational spirit, to get a correct vision of the tasks which are before us, to quicken and energize our latent forces and strive to convert them into living forces and lay our plans, broad and deep, to reach the unevangelized in the confines of our State, to strengthen the weak places, and to improve the quality of our membership. In religious experience the law prevails: "By their fruits ye shall know them." "Men do not gather grapes of thorns or figs of thistles. A good tree can not bring forth evil fruit, neither can a corrupt tree bring forth good fruit."

It is an excellent time to discuss the development of the missionary and financial resources of our local churches. Methods galore have been invented, tried, modified, and abandoned; only to be revived, renamed and sent abroad as a new commodity. The solution of this question lies not so much in methods as in motives.

1. Organization will never relieve the situation. The history of the past is not pleasant reading for those who love liberty. The liberties which our fathers have given us as a goodly heritage must not be lost to their children. Love always has and always will find a way to solve difficulties. It laughs at barriers and wears out opposition. To nothing will people respond so quickly or so completely. Love never desponds in its attempt to make the lame walk, the blind see, the deaf hear or the discouraged to take heart again. "Love never faileth." Love will make an every member canvass its first move. Love lives by sacrifice, and must demand it of those it truly would build up. Except the kernel of wheat be sown there is no increase. This is a hard law, but God made it and it is good. Jesus said to the lame man at the pool, "Take up thy bed and walk."

2. Love measures by possibilities instead of seeming actualities. Love has been called blind because it refuses to see blemishes.

but love has something better than sight, it has insight or vision. Its one eternal purpose is to make the object measure up to the vision.

3. The little church becomes a missionary church, just as a big one does. When it gets the vision of its Father's Kingdom it must respond. That vision took Carey off the cobbler's bench and transformed him into a world force. Whence come the missionary men who take the wilderness and make it blossom like the rose? What transforms them? The same vision that the peasant lad from Nazareth caught so long ago and was glorified by it. What is the solution of the whole problem? Men. Men in love with Christ's churches, large and small. Men who are brothers in very truth. We note the supply is not equal to the demand. Then "Pray ye therefore the Lord of the harvest that he will send forth more laborers into his harvest."

Church work is extensive and intensive. It is to build out and up. It is to go and grow. The saved are to be added to the membership, and there must be extensive advancement towards the measure of the stature of the fulness of Christ. This will make an ideal church. It is evident that our churches are not doing what they should for State, Home and World-wide Missions.

They are likewise wanting in intensive life. Too many of the Lord's army are stragglers, idlers, or rebels. Is the church supposed to give light to all that are in the house? Many of the lights are dim or dead. Is the church an organ to sound forth music for the glory of God and the comfort and uplift of humanity? Many of her pipes fail to respond, and some are mere imitations.

A BUSY DAY IN HICKMAN.

August 4th was a day full of activities in the bustling, growing city of Hickman. They are quite recovering from the losses by the overflow.

In the morning, I preached at the First church. Rev. H. B. Williams has recently been installed as pastor, and the prospects before him are very flattering. Bro. Williams has taken hold of the work with great zeal and inflexibility of purpose. He seems to have the hearty co-operation of

the church and we expect to hear blessed results from his labors in the near future. The church is possessed of considerable wealth and if its latent powers can be converted into living forces they will accomplish notable things in the matter of Kingdom building.

At night, I preached for Missionary King, at the Second church, and with the proffer of some aid from the State Board we secured the last hundred dollars due on their house of worship. The church has been organized about a year. They now have a membership of thirty-eight, and more than eighty in their Sunday School. They hope to have a much larger number in the near future. They are working people who are employed mainly in the manufacturing plants in West Hickman. Bro. King is also pastor of a prosperous church, some eight miles south, but located on a point of land that belongs to Kentucky. The church is now free of debt, and full of hope. Bro. King is a very zealous and humble worker, and is accomplishing great things in the extension of the Master's Kingdom. Thus we spent a busy day in the extreme southwest portion of Kentucky.

Next Sunday, we expect to have a big time at Ashland and the neighboring towns in the extreme northeastern portion of the State.

A faithful secretary does not eat much idle bread.

SIMPSON ASSOCIATION.

This prosperous body of Baptist churches met with Black Jack church. Rev. S. B. Ogle is pastor. We are indebted to Bro. E. L. Gillespie for generous hospitality and conveyance to and from the Association. We greatly enjoyed our stay in his home. This Association is a faithful supporter of all phases of our mission work. When I returned to Franklin that evening, my heart was made glad when I was called to the telephone by Mrs. W. E. Crocker and informed that she had resolved to sustain one of our mountain missionaries. Bro. Crocker supports Rev. H. W. Provence, one of our able missionaries in China. Rev. J. T. McGlothlin has accomplished a great work during his pastorate in Franklin Baptist church.

BETHEL COLLEGE

RUSSELLVILLE, KY. ESTABLISHED 1849

Standard work in both preparatory and college subjects.

We believe in educating the whole boy—soul, mind, body.

Bethel College seeks to be a real asset to the Baptist Denomination. Courses in Bible Study, Christian Doctrines, Missions, and all phases of Sunday School work.

We seek to give a young man some practical training for his life work along with his literary education. Thorough courses in Manual Training, Agriculture, Stenography, Typewriting and Book-keeping.

Good equipment. Special attention given to physical culture.

A special endowment fund enables us to extend very liberal assistance to those studying for the Baptist ministry.

For Literature or Information, Address

F. D. PERKINS, President

Box 25

Russellville, Ky.

GEORGETOWN COLLEGE

The oldest Baptist College in the South - owned and controlled by the Baptist Education Society of Kentucky. Georgetown is a modern, standard college for young men and young women.

LOCATION

Georgetown is a beautiful little city in the Blue Grass region of Kentucky; accessible, healthful and morally wholesome. It has a thoroughly filtered water supply - beautiful churches, of all the evangelical denominations - and no saloons.

FACULTY AND EQUIPMENT

The College has seven large buildings equipped with all the modern conveniences; a strong Faculty of trained and experienced specialists, who keep in close and personal touch with all the students. All the regular academic degrees are conferred and its graduates receive full recognition in all the great universities and women's colleges in the country.

PHYSICAL EXERCISE

A splendid Gymnasium and fine Athletic Field afford fine opportunity for physical training; and both out-door and in-door sports, under competent and well-trained physical directors for both young men and young women.

SCHOOL OF MUSIC

An especially strong Musical Faculty offers thorough and intelligent instruction in the various departments of music, including Musical Theory, Pianoforte and Voice Culture. There are also good departments in Expression and Art.

THE DEPARTMENT OF EDUCATION

Especial attention is given to the training of teachers, and to securing good positions for all graduates and students prepared to teach.

The Department of Bible and Sunday School Pedagogy seeks to train all the students for effective service in the Sunday Schools and other departments of Church work.

WRITE FOR CATALOGUE AND
FULL INFORMATION, TO

ARTHUR YAGER, President
GEORGETOWN, KENTUCKY

... SUNDAY SCHOOL DEPT ...

Louis Entzminger, Editor.
State Sunday School Secretary,
205 E. Chestnut St., Louisville, Ky.

NORMAL DIPLOMAS BY ASSOCIATIONS —JULY 31, 1912.

Long Run, 313; North Bend, 176; Elkhorn, 152; West Union, 108; Daviess County, 105; Blood River, 65; Bell County, 63; Campbell County, 50; Bethel, 49; Pulaski, 47; Nelson County, 47; Wayne County, 46; Ohio County, 43; South District, 37; West Kentucky, 37; Bracken, 31; Crittenden, 31; Tate's Creek, 27; Little River, 25; Franklin, 23; North Concord, 22; Ohio Valley, 22; Ohio River, 20; Concord, 20; Baptist, 17; Enterprise, 16; Sulphur Fork, 15; Boone's Creek, 14; Oneida, 12; Lynn, 11; Liberty, 11; Laurel River, 11; Warren, 11; Goshen, 8; Severn's Valley, 8; Simpson, 7; Russells Creek, 7; Whites Run, 6; East Lynn, 5; Union, 4; Graves County, 3; Central, 3; Bay's Fork, 2; Greenup, 2; Little Bethel, 2; Salem, 2; Three Forks, 1; Gasper River, 1; Freedom, 1; Mt. Zion, 1; Owen County, 1; Muhlenburg County, 1; Breckenridge, 1; Ten Mile, 1.

Fifty-four Associations holding 1,746 diplomas.

Teacher Training Standing of the Five Highest States in the Southern Baptist Convention.

Normal Diplomas—Kentucky, 1,746; Georgia, 1,664; North Carolina, 1,567; Texas, 1,393; Mississippi, 1,151.

Red Seals—Kentucky, 182; Georgia, 146; Alabama, 109; Texas, 95; Tennessee, 86.

Blue Seals—Kentucky, 131; Alabama, 64; Georgia, 62; Texas, 55; Tennessee, 54.

KENTUCKY SUNDAY SCHOOL ITEMS.

September has been set apart as the time when a special effort is to be made over all the South to enlist our great host of Sunday School workers in the Teacher Training work. While about 150 Kentucky pastors

are at work training their Sunday School teachers and officers, about 850 have not joined hands with us in this work. We are sure there will be a great number that will begin in September. We would like every worker who will take up any book in the Teacher Training course to enroll through this office. Those who do not have the privilege of joining a class should take the work as individuals. Wherever it is at all possible, a class should be organized. Those who have a Normal Diploma should take up some other book in the course. Let us begin to plan. Let superintendents begin to talk about it, and pastors to preach about it, and all of us to pray about it. According to Paul in his second letter to Timothy (II. Tim. 2:2), the Gospel teacher is to have two qualifications: First, he must be faithful; Second, he must have the ability to teach. We are praying and planning and working to the end that our Gospel teachers in Kentucky may measure up to these Gospel requirements. We want them to have the ability to teach, and if they are to be thus qualified they must prepare themselves for the work.

Rev. E. L. Ackiss, of Louisville, received the Blue Seal Diploma in July.

We had the pleasure of spending two days at Barlow, where we met the West Union Baptist Sunday School Association. It was a very fine meeting. At the Wednesday evening service, Convention Normal Diplomas were delivered to Pastor Harlan and nine of his workers. E. R. Ransom, of Blandville, was elected President of the Association for another year, and Rev. Harlan, Teacher Training Superintendent. They are planning a campaign to enlist every pastor and superintendent in the West Union Sunday School Association. A little more co-operation like this would mean great things for our Sunday School work.

We spent several days with Pastor A. B. Gardner and his workers, at Beaver Dam. We very greatly enjoyed our work with these splendid people. Bro. Gardner stands high with his people and has done a magnificent work in Beaver Dam. He believes in efficiency, and has shown his faith by his works. A class of nine received Normal

Diplomas at the graduating services Sunday morning. The school is graded, and splendid work is being done.

We spent one evening recently, with Rev. J. W. Hickerson, of Lebanon Junction, in a graduating service. Bro. Hickerson had a fine class of thirty-five ready for Diplomas, which we had the pleasure of delivering. He and Mrs. Hickerson are Blue Seal graduates. Since the meeting there, several others have received Diplomas. Lebanon Junction thus takes third place, only two other churches in the Southern Baptist Convention, so far as we have been able to learn hold more Diplomas and both of them are in Kentucky. The one holding the highest number is at Middlesboro, where Rev. J. M. Roddy is pastor. They have about sixty-five Diplomas. The next is the First church, Paducah, with fifty-nine or sixty, Rev. S. E. Tull, pastor. Lebanon Junction with forty-four and Twenty-Sixth and Market Streets, Louisville, Rev. Wallace Wear pastor, with forty-two.

Dr. M. D. Early, of Monticello, becomes a Blue Seal graduate receiving his Diploma in July.

Rev. J. W. Thompson, of Owenton, is among the Blue Seal graduates for July.

We are just back from a Sunday School Campaign, in the eastern part of the State, where five one-day Sunday School rallies have been held. The first day we spent at Louisa, where good crowds greeted the speakers. Rev. A. Cree has been doing fine work at Louisa and is appreciated by all the people. Bro. Cree is old in years, but young in spirit. There are very few young men younger than he. A good crowd also greeted us at Paintsville, where Rev. W. H. Setzer is pastor. We enjoyed our visit very much to Paintsville. What the Paintsville folk lack in quantity they make up in quality. At Pikesville Bro. Riggs is just getting on the field, but we were heartily received and had three splendid services. He is taking hold of things there with a vigorous hand, and the Pikesville people are ready to follow.

Saturday we spent at Graves Shoals, with Bro. Preston and his people. He has been pastor there for years and has done a wonderful work in that section of Ken-

BAPTIST BELIEFS

By Pres. E. Y. Mullins, D. D.

CLEAR CONCISE CONVINCING
96 pages. Cloth. Price 50c Postpaid

Brazilian Sketches

BY REV. T. B. RAY, D. D.

New Mission Study Text Book

136 pages. Illustrated

Cloth 50c - - - Postage 7c
Paper 35c - - - Postage 5c

Modern Baptist Heroes and Martyrs

EDITED BY REV. J. N. PRESTRIDGE, D. D.

One of the greatest inspirational books of
the day

325 pages 16 full page illustrations
Cloth \$1.00 net Postage 10c

SUBSCRIBE FOR

The Baptist World

"That Live Paper"

32 pages weekly, illustrated. The very best medium for obtaining a wide view of Baptist achievement and opportunity. Short, spicy, purposeful stories.

PRICE \$2.00 PER YEAR

Special contract at **\$1.50 PER YEAR** on two simple conditions: 1st, that it be paid strictly 12 months in advance, and 2nd, that it be regarded as a continuous subscription from year to year at this price, but with the understanding that it may be discontinued by the subscriber at any time by notifying us and paying arrears, if any.

Baptist World Pub. Co.

Incorporated

LOUISVILLE, - - - KENTUCKY

tucky: We finished up our tour with an afternoon rally in the church at Ashland, Sunday, all the churches in the city cooperating in the meeting. The speakers on this campaign were Dr. W. D. Powell, Newton T. Barnes, Field Secretary for Eastern Kentucky, and the writer. Dr. Powell is not only a great Mission Secretary, he is also deeply interested in our Sunday School work, and has been giving us, in all our efforts to promote the work, his earnest support and co-operation. His work on this trip, where he was acting solely the roll of a Sunday School specialist, was superb. He greatly delighted the people everywhere he spoke, and we are sure that parents and teachers will have a new and deeper interest in "that boy." Bro. Barnes is taking hold of the work in his section of the State with a vigorous hand, and will bring things to pass. He has enough requests for work to keep him busy for several months to come.

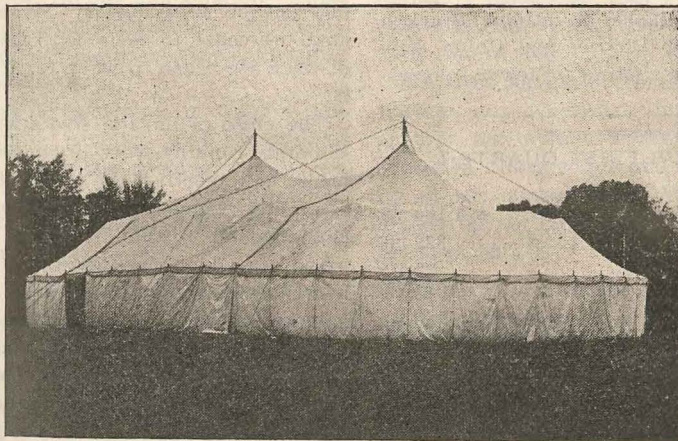
Secretary J. J. Gentry, who will work in the Central Division, with headquarters in Louisville, and whose address will be 205

E. Chestnut street, is now ready for work and is getting ready to put on a vigorous campaign in the Central part of the State. The Brethren who have heard Bro. Gentry know of his ability as a speaker and Sunday School worker, and speak of him in the most complimentary terms. It was a great day for Kentucky Baptists when the Lord gave him to us. We hope that the workers in his division will pray for him and cooperate with him in building up the Sunday School work in Central Kentucky.

Do not forget that September is the time to begin the Teacher Training work, if you are not already doing it. Write us for any

BETHEL ASSOCIATION.

This noble body meets with Fairview church. The attendance was large and the spirit fine. Pastor Hagan was re-elected Moderator. More than half the churches reported an increase in membership. We are expecting liberal support from this Association to the various departments of our State work.



We make a specialty of renting tents for meetings of all kinds and camping parties

Louisville Tent and Awning Co., Louisville, Kentucky

INCORPORATED

... WOMEN'S DEPARTMENT ...

Central Committee.

Miss E. S. BroadusChairman
1227 Third Avenue.

Mrs. B. A. ReesTreasurer
2326 Longest Avenue.

~~Miss Margaret B. WebsterSecretary
Box 396.~~

Miss Clifford & Hunter

The Central Committee take pleasure in introducing to our Mission Societies and all interested, our new helper, Miss Clifford E. Hunter, who is doing field work this month, in connection with Miss Webster. Miss Hunter is from Georgia, a graduate of our Training School in June, 1911, and highly esteemed by all who know her. Her heart's desire is to go to China, but the Foreign Mission Board are unable to send her, so for a year at least we hope to have her services.

May she be used of God to arouse in our Kentucky women a deeper sense of duty to wards the lost, and a burning enthusiasm to do our full share in sending out missionaries. Miss Hunter may be addressed, Box 396, Louisville, Ky. She is now attending Associations and seeking opportunities to organize societies.

Miss Webster plans to attend Bracken Association, South District and Union, hoping to extend her visiting to nearby churches in each case.

REPORT FOR FIRST QUARTER.

Foreign Missions	\$ 1,160 58
Home Missions	332 96
Margaret Home	22 45
Training School—	
Current expenses	87 33
Enlargement	32 35
Students' Fund	62 58
<hr/>	
Total	\$ 1,712 70
Total for year	17,270 30
<hr/>	
	\$18,982 00

So we have given in one quarter only one-tenth of the year's apportionment.

This is a poor showing. Can we be content with such meagre giving? Do we for-

get that our Saviour stands over against the treasury, watching what is put in? Do we forget all that he has done for us? Teach us, Lord, what we should do for thee, and help us to arouse others to help in this glorious work.

Miss Mary C. Tupper is going to El Paso Texas, to take charge of the Mission School, which the Sunbeams helped to establish. She asks for our sympathy and prayers in this difficult task. El Paso is one of the gateways into Mexico, and Miss Tupper's former service as a missionary in that country will be of great benefit here as well as her fine endowments of mind and heart.

The Training School is a special topic of study this month, and we give here an article written by Mrs. McLure for the Foreign Mission Journal:

Our Training School's New Work.

On a recent program from Virginia I note the quotation, "Whatsoever we beg of God let us also work for it."

In the past we begged God for the facilities for the training of our Southern Baptist young women and graciously He heard our prayers. Now that the W. M. U. Training School is a healthy growing school, shall we cease to carry it to God in prayer, or shall we cease to work for it? Far from it!

The close of its first five sessions finds a smoothly running work organized on a solid basis, and meeting the needs for which it came into being. This very success is a challenge to further progress, to broader work. In Oklahoma City the Union was in hearty sympathy with a plan to begin a specific neighborhood work for those in the city who need the help that the young missionaries can give. Necessarily the beginning of such a work will be small, since there will be little equipment, but it is the present plan to have a sewing school, Sunday School, Mothers' club, girls' clubs, and some music classes entirely managed and run by the faculty and students of the training school. Heretofore the mission work of the students has been entirely in co-operation with other organizations of the city. Such service will be continued, but it is the hope of the man-

agement in this new work, for which the training school will be entirely responsible, to lay such foundations as will lead to the growth of a permanent work which shall be a constant benefit to the city, and shall furnish a wide field where students may develop initiative, and ability to solve many problems of practical mission work.

The principal is now in New York taking the summer course in the New York School of Philanthropy, that she may be able to further relate the Personal Service Department of the Training School to the great social movements of the day. Lectures by eminent specialists and visits to noted institutions and settlements, as well as boarding in a settlement house, combine to make a course that is most illuminating and inspiring. Indeed, your principal is full of enthusiasm over the things that may be utilized in the training school course.

But the new work, while most attractive, is of grave import, and sends us to our knees. Will it be asking too much of Southern Baptist women to make this broadening of our Personal Service Department a matter of special prayer? In every society where the subject of "Missionary Training" is taken up will you include in the program one prayer for Divine guidance for those who plan this work and those who carry out the plans? "Whatever we beg of God let us also work for it."

Applications for entrance in October are coming in quite rapidly, and everything points to an auspicious opening. Truly, we expect great things of God.

MAUD REYNOLDS McLURE, Principal.

My Dear Sister:

I am rejoiced to know from the increased amount given, that the W. M. U.'s of our State no longer regard State Missions as an outside organization, but is essentially themselves working together with the rest of the State, and that the work is worthy of their deepest interest and heartiest support.

The interest in the importance of State Missions has increased largely in the past few years. Fifteen years ago all the Southern States contributed only \$65,000 for State Missions; ten years ago \$140,000 and last year \$475,000. The State Boards of the

South report 57,000 baptisms for the past year. The Home Board spent nearly \$400,000 and reports 26,899 baptisms. The Foreign Board spent \$630,785.31 and reports 4,300 baptisms.

The net increase in the churches of our Southland the last year about equals the results as reported by the missionaries of the different State Boards, which shows that whether our denomination progresses or disintegrates depends largely upon State Missions.

The Baptists of the North pay but little attention to State Missions and only one man in every fifty-five is a Baptist. In the South where State Missions are more properly appreciated, one man in every five is a Baptist. Several States in the North report a decrease in membership but no State in the South makes such a lamentable showing.

Our Baptist women in the South do well to join hands with us in trying to reach the more than 16,000,000 unevangelized people in our territory and in our earnest endeavor to convert our latent forces into living forces for the glory of God.

We are pleased with the gifts of the W. M. U.'s of Kentucky the past year and we earnestly insist that they stand by us faithfully until our books shall close October 31st, free of debt.

We must sustain our missionaries, our colporters, our evangelist, our Sunday School experts, our women workers, build church houses at **needy points and develop** the **city** of our membership. What we need at present is not only more of us but a better brand of us.

"If once all our lamps should be lighted
And steadily blaze in a line
Wide over the land and the ocean,
What a girdle of glory would shine;
How all the dark places would brighten,
How the mists would roll up and away.
How this earth would laugh in her gladness
To hail the Millennium day."

We supported the past year 101 workers. These reported 2,856 conversions, 2,121 baptisms, 1,035 additions by letter, making a total increase of 3,156. We aided in the erection of 107 new houses of worship. We have done nobly by Home and Foreign Missions,

giving to the latter \$1,300 more than we were asked. Now we ask you to give heroically to State Missions and Church Building. From \$50 to \$500 will support a worker, and from \$50 to \$100 will make the last payment on some mountain church. Will you make a vigorous canvass of your membership and remit through your usual channels before our books close October 31st? Mrs. W. E. Crocker, of Franklin, through her W. M. U., will support a mountain worker. What will you do?

W. D. Powell.

Resolutions in memory of our respected and universally admired brother, A. C. Graves, D.D., of Lebanon, Ky., who departed this life on May 21, 1912, in the seventy-fifth year of his age.

Whereas, Dr. Graves was an active, faithful and interested member of this Board for a number of years, a friend to world-wide missions in all its phases.

And whereas, He was an able and true minister of the gospel, a brother well beloved, contending earnestly for the faith once for all delivered to the saints.

And whereas, Our Heavenly Father saw that it was wise to remove him from the fellowship and co-operation of the saints on earth, in the prime of an experienced Christian manhood and ardent labor;

Therefore, resolved, That while the Providence removing him was mysterious and inscrutable, we bow in humble submission to the will of Him that doeth all things well, and will cherish his memory and emulate his victories.

Resolved, That a copy of these resolutions be spread on the minutes of this session of the Board, and published in our Baptist papers, as also a copy be sent, with expressions of tender sympathy to the bereaved family of our departed brother.

J. W. WALDROP,
C. M. THOMPSON,
J. A. BOOTH,

Committee.

JULY RECEIPTS.

Blood River Ass'n—Murray ch., J. L. P., \$35.

Blackford Ass'n—Panther Creek S. S.,

R. M. C., \$1.39.

Baptist Ass'n—Lawrenceburg ch., Miss M. P., \$7.22; J. B. S., Tr., \$10.86; Salvisa ch., E. L. A., \$53.35.

Breckenridge Ass'n—J. J. H., Tr., \$6.26.

Boones Creek Ass'n—Beattyville ch., R. A. B., \$38.56.

Bracken Ass'n—Mt. Olivet ch., Rev. W. C. C., \$10.

Book Sales—R. E. B., \$3; W. D. P., 35c; J. T. McF., \$16.76; E. S. R., 40c; R. W., \$1.25; W. L. K., \$6; B. J. R. B. Co., \$60; G. P., 20c; E. V. R., \$4; Rev. J. K. S., \$1.50; A. A. A., \$10; L. V., \$12; Rev. T. F. G., \$13.05; A. B. P. C., \$37.50; Miss M. B., 50c; G. P., \$27.61; J. L. B., Tr., \$24.65; L. V., \$7.05; B. J. R. B. Co., \$63; L. V., \$10; Dr. W. B. C., \$15.50; Mrs. E. M. J., 25c; J. M. C., \$25.75; R. E. B., 60c; F. M. B., 25c; H. B. W., \$9.60; W. D. P., \$3.25; Wm. E., 25c; W. D. P., 75c; W. D. P., 50c; Dr. W. E. H., \$16.59.

Campbell County Ass'n—Oak Island ch., (C. E. B., \$15; First ch., Newport, R. E. K., \$190.04; Newport S. S., Miss K.'s class, by Miss L. W., \$1;.

Central Ass'n—Mackville ch., J. O. B., Tr., \$23.62; Willisburg S. S., \$1.

Daviess County Ass'n—Calhoun ch., W. H. R., \$6.30; Calhoun B. Y. P. U., \$4.60; Mt. Liberty, \$11.04; Yellow Creek, \$5.59; Island, \$10; Pleasant Ridge, \$18.30; South Hampton, \$9.19; South Hampton S. S., 60c; Stanley ch., \$8.85; First ch., Owensboro, \$12.32; First ch., Owensboro, \$4.53; First ch., Owensboro, \$6.94; Maceo ch., \$1; Buck Creek ch., \$6; Walnut St. ch., \$1.

East Lynn Ass'n—J. T. McF., Tr., \$26.20.

Enterprise Ass'n—Rockcastle Mission, Z. J. A., \$6.12; Licking River ch., Z. J. A., 61c; Inez ch., G. P., \$2.70; Licking River ch., R. A. B., \$1.91; Pikesville ch., W. B. McC., \$4; West Liberty Mission, Z. J. A., 91c.

Elkhorn Ass'n—First ch., Lexington, J. W. P., \$20; Cane Run ch., J. P. J., \$65.40.

Franklin Ass'n—First ch., Frankfort, J. W. H., \$80.

Goose Creek Ass'n—Rev. J. G. J., Mod., \$7.

Graves County Ass'n—Mayfield ch., W. M. W., \$155.05.

Add These Books to Your Library

GOD'S PLAN WITH MEN

By T. T. Martin, Evangelist

An Interpretation of Salvation

Contents:

- I—Sin and Its Punishment—God's Justice—Degrees in Hell.
- II—Sins Never Excused, nor the Penalty Ever Remitted without Redemption.
- III—Jesus the Christ as Sin-Bearer—God's Justice and Love.
- IV—The New Relation—The New Motive.
- V—The Sins of God's Children—Forgiveness Chastisements.
- VI—Rewards—Degrees in Heaven.
- VII—How to be Saved—Repentance and Faith.
- VIII—The Meaning of "Believe On" or "Believe In" Christ.
- IX—External Life the Present Possession of the Believer.
- X—Development of Character in the Redeemed.

Price - - - \$1.00 Postpaid

KNOWING THE SCRIPTURES

The second edition of Dr. A. T.

Pierson's last book now ready

Nearly 500 pages literally packed with help for all Bible readers. Fifty laws of Bible study and examples of each. This work should be in every Christian's Library. It's a book you will need to refer to often.

Attractively bound in cloth with gold stamp
Net, \$1.00

The Singular Actions of Consistent Christians

or

The Nonsuch Professor In His Meridian Splendor

BY REV. WM. SECKER

This is a wonderful book. At whatever page you open it, your eye lights upon pithy aphorisms that combine the sententiousness of Benjamin Franklin with the sweet, holy savour of Samuel Rutherford. It contains hundreds of bright seed-thoughts like this: "This world is very large in our hopes, but small in our hands.

Price 50c

Postage 10c

The former price was one dollar.

This is the book which Dr. Eaton so highly commended.

The Greatest Song Book for Baptists

THE NEW EVANGEL

SHAPED OR ROUND NOTES

Prices each - Cloth \$0.35 postpaid Limp \$0.25 postpaid
 " per doz. " 3.50 not postp'd " 2.25 not postp'd
 " per 100 " 25.00 " " " 15.00 " "

Send all your orders for books to the

BAPTIST BOOK CONCERN, Incorporated

LOUISVILLE, = = = = = KENTUCKY

Greenup Ass'n—Carter City ch., Z. J. A., \$3.92.

Journals—Rev. E. A. C., \$1.20; G. P., 25c; Mrs. E. J. W., \$1.80; Mrs. N. L. F., 60c; Mrs. B. G. P., 60c; Rev. W. H. S., 60c; Miss C. K., 60c; Miss C. B., \$5.40; Miss B. M., \$1.70; J. P. E. D., 50c; Mrs. W. E. A., \$1.80; Mrs. J. W. M., 60c; W. P. M., 60c; L. V., \$1.95; J. W. P., 50c; Rev. S. A. C., 60c; Mrs. V. C., 60c; Mrs. A. M., 60c; J. S. W., 25c; W. D. P., \$5.30; B. B. C., \$16; C. B. C., 60c; W. D. P., \$2.40; Mrs. M. A., 60c.

Individual—W. C. J. Fund, \$50; F. M. Br., \$100; Rents, R. B., \$16; Rev. P. H. K., \$15; H. M. Bd., \$200; A Friend, \$5; Interest Hazard ch., \$15; Baptist Tabernacle, Loan, \$575; Baptist Tabernacle, Loan, G. C. D., \$25; J. A. C., \$10.

Long Run Ass'n—Parkland ch., C. M. H., \$5; Immanuel ch., R. G. F., \$33.03; Oakdale ch., Wm. G. H., \$12; Highland Park ch., A. F. C., \$6.20; Third Ave. ch., L. M. R., \$33.11; Twenty-Second and Walnut Sts. ch., \$80.16; Parkland ch., L. M. R., \$63.22; Calvary ch., W. H. J., \$100; Fisher Ave. ch., L. Z., \$6.15; Carlisle Ave. ch., L. Z., \$2; Walnut St. ch., D. V. Tr., \$3; Calvary ch., W. H. J., \$21.86; Kosmosdale ch., C. K. H., \$5.25; Pleasant Grove. C. K. H., \$3.66; Parkland ch., B. H. V. D., \$5; Little Flock ch., L. Z., \$6.81; Fourth Ave. ch., O. W. McC., \$151.33; Beechmont ch., W. J. J., \$36; Walnut St. ch., G. E. H., \$25; Little Flock S. S., Mrs. J. R. H., 75c; Little Flock ch., Mrs. J. R. H., \$1; Little Flock S. S., Mrs. J. R. H., \$9.35; Ninth

and O ch., B. S., \$2.39; Parkland ch., L. M. R., \$105; Broadway ch., T. J. H., \$200; Oakdale ch., J. P. J., \$8.

North Concord Ass'n—Concord ch., D. A. D., \$8.50.

Nelson Ass'n—Belmont ch., L. Z., \$5.46.

Oneida Ass'n—Oneida ch., L. D. S., \$4.37; A. J. M., \$5; Fairview ch., A. J. M., \$4.

Ohio River Ass'n—Dycusburg ch., W. D. C., \$6.75; Walnut Grove ch., \$7.88; Crooked Creek ch., \$18; Corinth ch., \$45.33; Repton ca., \$13.83.

Russells' Creek Ass'n—Greensburg ch., Dr. A. S., \$13.20.

Salem Ass'n—H. C. H., Tr., \$115.

Simpson Ass'n—J. H. C., Tr., \$206.61.

Sulphur Fork Ass'n—Sligo ch., J. M. W., \$2.61.

Ten Mile Ass'n—Mt. Zion ch., Miss M. K. S., \$2.25.

Union Ass'n—Brooksville ch., S. P. M., \$60.

Wayne County Ass'n—Central Union ch., B. C. K., \$4.50; Steubenville ch., R. C. K., \$4.75.

West Union Ass'n—First ch., Paducah, W. W. R., \$50; Twelfth St. ch., Paducah, J. R. C., \$3.

Warren Ass'n—First ch. S. S., Bowling Green, J. W. P., \$16.41.

Whites Run Ass'n—English ch., H. T. A., \$1.75; Cave Hill Baptist ch., H. L. S. T., \$8.50.

West Kentucky Ass'n—Columbia ch., N. S., \$4.

17c a Day Buys an

OLIVER

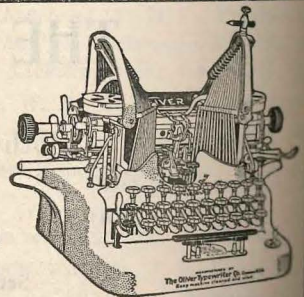
The Standard Visible Writer

Can you spend 17c a day to better advantage than in the purchase of this wonderful machine?

Write for Special Easy Payment Proposition, or see the nearest Oliver Agent.

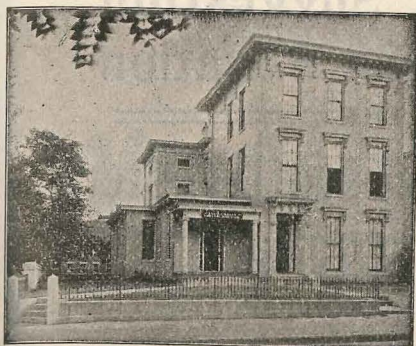
THE OLIVER TYPEWRITER AGENCY
313 Third Street

Louisville, Ky.



Save your pennies and own
Printype
OLIVER
Typewriter

A CHAPEL FOR PATRONS



LEE E. CRALLE

Funeral Director

S. W. Cor. 6th and Chestnut Sts.
Telephone Main 430

LOUISVILLE, - KENTUCKY

MOLL & CO.

Incorporated

Printers, Binders

Publishers

638 Fourth Ave. Louisville, Ky.

Home Phone 351 Correspondence Solicited

BLUM ART GLASS CO.

INCORPORATED

Maker of Church Windows

640 Third St. Louisville, Ky.

“ANITA”

AMERICAN LIGHTEST WATER

Always Pure, Fresh & Invigorating



THE BEST COOLER ON THE MARKET

Anita Spring Water Co.

INCORPORATED

PHONES { Home 4520
Cumb. M. 1468-A

Our New Plant, 210-212 Pearl St.
LOUISVILLE, KY.

-----WE ARE-----

MANUFACTURERS OF

MONUMENTS

Of High Class, But Moderate Prices

Peter-Burghard Stone Co.

SALESROOM

317 W. Jefferson St.

PLANT

13-14 Maple St. Louisville, Ky.

An Important Suggestion for Your Summer Vacation

GO TO THE

Glorious Mountains of Western North Carolina

SEASON ROUND-TRIP FARES FROM LOUISVILLE TO

<i>Asheville, N. C.</i>	- -	\$15.95
<i>Black Mountain, N. C.</i>	- -	16.45
<i>Brevard, N. C.</i>	- -	17.80
<i>Hendersonville, N. C.</i>	- -	16.70
<i>Hot Springs, N. C.</i>	- -	15.95
<i>Lake Toxaway, N. C.</i>	- -	18.80
<i>Tryon, N. C.</i>	- -	17.55
<i>Waynesville, N. C.</i>	- -	17.10

OTHER POINTS IN PROPORTION

**Through Pullman Drawing Room Electrically
Lighted Sleeping Car Daily**

**Lv. Louisville - 8:10 P. M.
Ar. Asheville - 1:05 P. M.**

Making Connection for All Points

Beautifully illustrated booklets descriptive of this scenic country and containing information about hotels and boarding houses, now ready for distribution

**SOUTHERN RAILWAY
Premier Carrier of the South**

CITY TICKET OFFICE

B. H. TODD, Dist. Pass. Agt.

124 So. Fourth Ave.

LOUISVILLE, KY.