

Vol. XII.

No. 1.

Kentucky Mission Monthly

OFFICIAL ORGAN OF KENTUCKY BAPTISTS

Entered Feb. 5, 1903, at Louisville, Ky., as Second-class matter, under act of Congress, March 6, 1879.

MAY, 1912

25 Cents a Year

Being Dead Yet Speaketh

There is great need, all over the country and all over the world, of strong, well trained, devoted ministers. Pray therefore the Lord of the harvest, that he send forth ~~the~~ laborers into his harvest. And O brother, listen—maybe he is calling you. Get on your knees—be still—listen.

John A. Broadus

Sometimes a message from the voiceless dead speaks louder than nearby utterances.

Reading the writing above, there comes a vision of the great teacher and preacher of by-gone days—John A. Broadus.

The kind of minister he prayed for transfigured churches and had the contagion of character that cheers and conveys courage to follow out the command and commission of Jesus Christ, "Go ye into all the world and preach the Gospel to every creature."

The terms of our Lord's commission make a task of giving the Gospel impartially to the whole world one which claims precedence to every other enterprise.

"Brethren, the time is short; it remaineth that both they that have wives be as though they had none; and they that weep as though they weep not; and they that rejoice as though they rejoiced not; and they that buy as though they possessed not; and they that use this world as not abusing it; for the fashion of the world passeth away."

The Lord is at hand.

Will not the 1871 Kentucky Baptist churches let us hear from them?

Pastors, as Nathan said to David, "Thou art the Man."

..Rock Island Lines..

VIA MEMPHIS

The Official Route of Baptists from the Southeast to the
Southern Baptist Convention
Oklahoma City
May 15th to 20th 1912

LOW RATES

Electric lighted equipment. Splendid service. For detailed information as to Rates, Limits, Side-trips, etc., address

H. I. McGUIRE, Dist. Pass. Agt. 38 E. 4th Ave. CINCINNATI, OHIO

Merchants, Manufacturers, Doctors, Lawyers
and other Professional Men.

NOTICE!

If you have no fireproof safe or vault, what will you lose if your valuable books and papers are destroyed by fire?

Write or call for prices and terms on

The Halls' Safe Co.

W. J. VETH, Dealer

136 North Third St.

Home Phone 5257

LOUISVILLE, KY.

N. B.—Second hand Safes bought and sold. Safes when locked, opened and repaired.

The Kentucky Mission Monthly

"LET HIM THAT HEARETH SAY COME"

VOL. XII.

MAY, 1912.

No. 1.

KENTUCKY BAPTISTS AND MISSIONS.

We are highly gratified with the liberal responses which have come to our appeals for the cause of Home and Foreign Missions. Pastors and churches have been diligent in gathering in funds and as a consequence we have raised more than our apportionment for Foreign Missions, though we fell short on Home Missions.

We feel that Kentucky Baptists came very near doing their best for these two objects, and it would be unwise to expect them to enlarge very much their contributions to Home and Foreign Missions for the fiscal year, on which we now enter. We praise God who has given us a decided victory.

Thus far Tennessee is the only State we have heard of beside Kentucky which has met her apportionment to Foreign Missions. Kentucky gave to Foreign Missions \$46,167.13. Our gifts last year included \$5,000 for the Jubilee Fund, which, of course, does not occur this year, showing that our churches made a marked improvement in their gifts. Virginia, Georgia, Texas and South Carolina lead us in the amount of their gifts to Foreign Missions. We hope some day to see Kentucky lead the entire South along all lines of Christian work, but our growth must be gradual and solid, and not fitful and spasmodic.

Our noble pastors sent us during the month of April \$49,460.42! Last April we received \$37,696.54, showing a gratifying increase for the month of \$11,763.88. Last year the churches gave \$17,000 for Foreign Missions in April, and this year \$23,000. Last year they gave \$14,000 for Home Missions, and this year \$15,443.

We extend our congratulations to the pastors, churches and brotherhood at large and our gratitude to our Heavenly Father who has led us, we trust, in all our ways.

We must turn our faces with hopefulness

to the work of caring for State Missions and Church Building. The base of supplies must be well looked after. The demands for aid in the construction of meeting houses at needy points increase month by month. Churches, Sunday Schools and individuals must see that this important demand is promptly met. Our State workers in the main are efficient and faithful, and must be sustained. New towns, new railroads, and new mining camps are constantly being opened and there is a demand for an increased force of workers. We are accomplishing good work through our colporters. We are satisfied that pastors and churches will resolutely stand by our State work.

There are in the South 839 Associations, 23,107 churches, 14,174 preachers and 2,360,172 members. These have contributed during the year \$580,408.17 to Foreign Missions. This is an increase of more than \$70,000 over the gifts of last year and is very encouraging.

The debt on the Foreign Board has been notably decreased.

The workers on the foreign field will report this year more than 4,000 baptisms. This is indeed a glorious record. We have a total membership of 24,689.

DO NOT CRITICISE.

It does not require brains to find fault. Any one can do that. Some criticised John the Baptist because he was not like other folks. Then they criticised Christ because He was like others. Our Lord was sinless and faultless and never made a mistake and yet people criticised Him.

Our splendid church building work must go forward. Other States are falling into line. We are in urgent need of funds.

... EDITORIAL ...

W. D. POWELL Editor
 LOUIS ENTZMINGER, Sunday School Sec'y
 MISS E. S. BROADUS, Ed. Woman's Dept.
 A. E. WOHLBOLD Business Manager

THE DEDICATION AT NICHOLASVILLE.

During the pastorate of Rev. J. D. Adcock at Nicholasville, the matter of thoroughly renovating the house of worship and making it an up-to-date structure was begun. The work has been completed and on the invitation of the pastor, Rev. E. W. Coakley, I spent Saturday and Sunday with them. We had a delightful time, made provision for the balance due of \$2,200 and left the people rejoicing. The house is a beautiful structure with adequate Sunday School rooms, baptistery, and pleasing to the eye in all its appointments. The expense for enlarging and renovating the house was between \$7,000 and \$8,000. Bro. Coakley has a fine grip on the situation, and we heard many of the noble women and some of the men say that in the near future they would make a move to erect a pastor's home. It certainly is a thing much needed.

THE DEDICATION OF PORTER MEMORIAL CHURCH, LEXINGTON.

Sometime since the beautiful house was partially destroyed by a fire. It has been rebuilt and on Sunday, May 5th, was rededicated to the services of God. Dr. J. W. Porter preached the sermon. Rev. T. C. Ecton and Rev. Arthur Westneat also took part in the dedicatory services. We are well pleased with the building, and Rev. J. E. Caswell, the pastor, is greatly encouraged by the prospects before him. Day by day the Baptists are becoming stronger in Lexington, much to our delight.

Baptists have a Master, a Mission and a Message.

We must stand true to our convictions. We must be ever found fighting for our principles, if we expect this world to be converted to Christ and to His blessed gospel and to enjoy the benefits of the Redeemer's love.

THE DEDICATION OF THE BEAUTIFUL NEW BAPTIST CHURCH AT JACKSON, TENN.

Friday, May 3, by request, we made two addresses in Jackson, Tenn. A number of brethren had been requested to address the people during the week preparatory to the dedication, which occurred on Sunday, May 5th. The house cost some \$90,000 and is the most complete and satisfactory worship we have seen in the South. There are others which have cost more, but considering the appropriateness to the various demands of church work at the present day, we have not seen its superior. \$30,000 was due on it and when we left they thought they could see where \$24,000 would be forthcoming. Dr. George W. Truett was expected on Saturday, who would preach the dedicatory sermon on Sunday. It was our pleasure to speak to the students of Union University. Dr. E. Y. Mullins went with us and made two strong addresses.

CALLED HIGHER.

Louisville Baptists and many more mourn the departure of Mrs. Lizzie H. Woodbury, who was summoned to the Paradise of God, May 5, 1912. Fifty years' service. This was the opening day of her jubilee as teacher in Walnut Street Baptist Sunday School. Children and loving friends had prepared an appropriate programme for the occasion; but the celebration was in Heaven.

You ought to know what the Baptists are doing for the world's redemption. To this end, you should attend the next meeting of the Southern Baptist Convention in Oklahoma City, May 15th. If you wish to be appointed as a messenger, you should send your request without delay to W. D. Powell, 205 E. Chestnut St., Louisville, Ky. Churches who do not wish their pastor to be a "Know-nothing Baptist," ought to raise the funds and pay his expenses to this great meeting. They would be more than repaid for their expense by the fire and enthusiasm and increased fund of knowledge that the pastor will manifest in his pulpit ministrations on his return.

MISSION RALLIES.

We have attended several Institutes during the month and feel that much light has been furnished where it was needed on the great subject of world-wide evangelization.

The Institute at Murray seemed to be one of the best in years; it is growing in power year by year. We arose from a sick bed to attend it.

We were not well when the Institute was held at Princeton, and yet we very greatly enjoyed it. The attendance from neighboring churches was very fine; the local attendance did not seem to be quite so good as last year, though the house was well-nigh filled at the day and night services. The Institute accomplished great good. The brethren all asserted that they never heard finer addresses.

The Institute at Barbourville was well attended and greatly appreciated by the people. Brother Hutson has a firm grip on the situation and Barbourville Baptists are moving forward.

On the same trip we ran up to Middlesboro and were gratified to find Brother Roddy greatly encouraged in his work. His people have constructed one of the finest parsonages in the state and no doubt will build a commodious house of worship at no distant date.

The Institute at Clay Ky., was a new venture, but it was in every sense of the word a success. The speaking and preaching was of the highest order, and though the roads were well-nigh impassable, and conveyances would often mire down in the mud, yet the attendance was good from start to finish. Enthusiasm ran high and the people, will, no doubt, give more liberally and cheerfully to the great State, Home and Foreign Mission work.

This is a fine time to secure subscribers for the Kentucky Mission Monthly, the Home Field and the Foreign Mission Journal. They should adorn every Baptist home. They cost sixty cents per annum. Send all subscriptions to this office. It is very confusing when subscriptions are sent for the three journals to Richmond or Atlanta. Send them to W. D. Powell, Box 504, Louisville, Ky.

"KNOW NOTHING BAPTISTS."

We must use every means at our command to enlighten and enlist a great multitude of Baptists who know nothing about our Mission work at home and abroad. It is startling how little some pastors know of the true situation. The command of Christ to give the gospel to the whole world is plain and explicit. It will be very helpful to our pastors and to our people to attend the next meeting of the Southern Baptist Convention, which convenes May the 15th, in Oklahoma City. The railroads offer reduced rates. This will afford an opportunity of visiting the far West. The plan and purpose and power of Missions will be better understood by those who attend that great meeting and they will return, no doubt, with a definite, firm purpose to give and labor for Missions as never before.

We are sending out great quantities of literature, giving information on Home and Foreign Missions. If any field has not been reached, and if there is a place where literature can be used with good effect, we would be glad to be advised and it will be sent immediately.

The State Board of Missions will meet on Tuesday, June 4th. The Third Avenue church will entertain. We trust that every member will be present. All should notify Pastor S. J. Cannon, Louisville.

To succeed, a missionary must go forth as Paul went to the Corinthians, "In weakness and in fear and in much trembling." There was something deeper and better than the mere persuasive words of human wisdom, such as we would expect from an orator.

Missionary J. C. Johnson is much encouraged in the work at Whitt and two weak points in Greenup County where there is no Baptist Church, but the prospects are good for the organization of the work at both places some time in May. Our pastors work day by day and our task is by no means a finished one. Thousands of towns and communities in Kentucky need Baptist Churches.

... SUNDAY SCHOOL DEPT ...

Louis Entzinger, Editor.
 State Sunday School Secretary,
 205 E. Chestnut St., Louisville, Ky.

South Carolina	678
Virginia	497
Louisiana	484
Oklahoma	222
Florida	167
Missouri	129
Arkansas	108
Foreign	69
District of Columbia	38
Maryland	12

**KENTUCKY LEADS THE SOUTH IN THE
 TEACHER TRAINING WORK.**

Certainly every pastor, Sunday School worker and indeed every Baptist in Kentucky will be interested in the following comparative statement. This statement shows the splendid progress made in the Teacher Training work from May 1, 1911, to May 1, 1912. This closes the Southern Baptist Conventional year. Note especially Kentucky's Progress.

Over 1,500 Baptist Sunday School officers and teachers have been taking the Teacher Training Course during the past year. Are you one of them? If not, why not? Over 100 Baptist preachers are leading in the Teacher Training work. Are you one of that number?

NORMAL DIPLOMAS.

May 1, 1911.

North Carolina	686
Mississippi	616
Texas	598
Alabama	475
Tennessee	397
Kentucky	353
Georgia	330
South Carolina	265
Oklahoma	158
Virginia	137
Louisiana	124
Florida	96
Arkansas	73
Missouri	70
Foreign	21
Maryland	0

May 1, 1912.

Kentucky	1,558
North Carolina	1,438
Georgia	1,389
Texas	1,139
Mississippi	1,057
Alabama	819
Tennessee	751

RED SEALS.

May 1, 1911.

Georgia	51
Alabama	35
Mississippi	26
Kentucky	26
Tennessee	22
Texas	20
Louisiana	12
South Carolina	10
Virginia	9
Florida	8
North Carolina	5
Arkansas	2
Missouri	3
Maryland	0
Oklahoma	0

May 1, 1912.

Kentucky	133
Georgia	100
Texas	74
Tennessee	73
Alabama	63
Mississippi	45
North Carolina	36
Louisiana	33
Missouri	32
South Carolina	30
Virginia	17
Florida	12
Arkansas	8
Oklahoma	6
District of Columbia	3
Maryland	0

BLUE SEALS.

May 1, 1911.

Alabama	14
Kentucky	13
Tennessee	13
Texas	11
Mississippi	9
South Carolina	8

Continued on page 8

— THE —

Southern Railway

Through S. Louis in conneci on with the Frisco
Lines is the SHORTEST Route to

OKLAHOMA CITY

Leaves Louisville - 9:30 A. M.

Arrive St. Louis - 5:40 P. M.

Leaves St. Louis - 8:35 P. M.

Arrive Oklahoma City 4:40 P. M.

Round Trip Fares Account

Southern Baptist Convention

as follows:

Louisville \$31.50. Lexington \$32.75. Other points in proportion.

Tickets sold May 10th to 14th good returning
until May 31st.

Through Pullman Sleeping Car, Louisville to Oklahoma City

Special Train if sufficient number make reservation. Make Pullman
reservation now. Write

B. H. TODD, D. P. A., 124 S. Fourth Ave. Louisville, Ky.

Virginia	6	Ohio County, 29; Tate's Creek, 27; Little River, 25; Franklin, 23; North Concord, 22;
Louisiana	5	Ohio Valley, 21; Ohio River, 20; Bethel, 19;
Georgia	3	Concord, 18; Boone's Creek, 14; Sulphur Fork, 14; Baptist, 14; Oneida, 12; Nelson,
North Carolina	3	12; Lynn, 11; Liberty, 11; Laurel River, 10;
Florida	1	Goshen, 8; Severn's Valley, 7; Simpson, 7;
May 1, 1912.		
Kentucky	100	Russell's Creek, 5; White's Run, 5; Union,
Tennessee	47	4; Enterprise, 4; Warren, 3; Bay's Fork, 2;
Georgia	45	Greenup, 2; Graves County, 2; East Lynn,
Texas	38	1; Three Forks, 1; Gasper River, 1; Free-
Alabama	28	dom, 1; M. Zion, 1; Salem, 1; Owen, 1;
Mississippi	26	Central, 1; Mullenberg, 1; Breckinridge,
Missouri	25	1; Ten Mile, 1.
North Carolina	25	Associations, 54; Diplomas, 1,558.
Louisiana	23	The following have received the Blue
South Carolina	20	Seal Award during the month of April, 1912:
Virginia	15	Mrs. Louise M. Doll, Route 2, Ashland,
Foreign	10	Ky.; Dr B. F. Swindler, Carlisle, Ky.; Miss
Florida	4	Susie Pelley, Covington, Ky.; Mrs. Chas.
Oklahoma	4	Herbert, Covington, Ky.; Mrs. Mary Phil-
District of Columbia	3	lips, Covington, Ky.; Mrs. B. P. Rice, Cov-
Arkansas	2	ington, Ky.; Miss Della Bishop, Falmouth,

Counting each seal and each diploma and award we give below the increase in awards during the past twelve months by the seven leading States. Kentucky's progress is even more noticeable.

Increase in Teacher Training Awards from May 1, 1911, to May 1, 1912.

Kentucky, \$1,865; Georgia, \$1,481; North Carolina, 987; Texas, 838; Tennessee, 660; Mississippi, 569; Alabama, 498.

Dear Reader—Have you had a share in this glorious work during the past twelve months? If you have will you join hands with us to make it even more glorious during the next year? If you haven't, will you share with us the blessings and benefits of this work another year? For literature, books, questions, etc., correspond with Teacher Training Sec'y, P. E. Burroughs, Nashville, Tenn., or direct with Baptist Sunday School Secretary of Kentucky, Louis Entzminger, 205 E. Chestnut St., Louisville, Ky.

Convention Normal Diplomas Held in Kentucky by Associations—May 1, 1912.

Long Run, 300; North Bend, 176; Elk Horn, 138; Daviess County, 104; West Union, 95; Blood River, 64; Bell County, 63; Pulaski, 46; Wayne County, 45; South District, 36; West Kentucky, 36; Campbell County, 32; Crittenden, 31; Bracken, 30;

Ohio County, 29; Tate's Creek, 27; Little River, 25; Franklin, 23; North Concord, 22; Ohio Valley, 21; Ohio River, 20; Bethel, 19; Concord, 18; Boone's Creek, 14; Sulphur Fork, 14; Baptist, 14; Oneida, 12; Nelson, 12; Lynn, 11; Liberty, 11; Laurel River, 10; Goshen, 8; Severn's Valley, 7; Simpson, 7; Russell's Creek, 5; White's Run, 5; Union, 4; Enterprise, 4; Warren, 3; Bay's Fork, 2; Greenup, 2; Graves County, 2; East Lynn, 1; Three Forks, 1; Gasper River, 1; Freedom, 1; M. Zion, 1; Salem, 1; Owen, 1; Central, 1; Mullenberg, 1; Breckinridge, 1; Ten Mile, 1.

Associations, 54; Diplomas, 1,558.
 The following have received the Blue Seal Award during the month of April, 1912:
 Mrs. Louise M. Doll, Route 2, Ashland, Ky.; Dr B. F. Swindler, Carlisle, Ky.; Miss Susie Pelley, Covington, Ky.; Mrs. Chas. Herbert, Covington, Ky.; Mrs. Mary Phillips, Covington, Ky.; Mrs. B. P. Rice, Covington, Ky.; Miss Della Bishop, Falmouth, Ky.; Rev. A. R. Abernathy, Georgetown, Ky.; Rev. G. D. Billeisen, Louisville, Ky.; Miss Margaret Webster, Louisville, Ky.; Miss Nona Lee Dover, Louisville, Ky.; Rev. C. O. Booth, Louisville, Ky.; Mrs. J. L. Boyd, Louisville, Ky.; Miss Ovie Pitman, Murray, Ky.; Mrs. H. B. Taylor, Murray, Ky.; Rev. L. B. English, Pembroke Ky.; Miss Kittie Langley, Stithton, Ky.

We are always glad to examine papers sent to our office. In spite of the fact that we are in a rush practically all of the time we have been making a number of examinations lately and were glad to do so. Still we felt that others might do this work and relieve us as much as possible, that we might turn our minds to other things. Any pastor who holds the Convention Normal Diploma is an approved examiner. Surely our pastors will equip themselves to examine the work of their Sunday School workers. Many of them are doing this; many of them have already done so. We do not want anybody who is taking the work to be put to any inconvenience, however, and as above stated, we will be glad to make the examination, but simply call attention to the fact that this can be done by the pastor where they hold the Normal Diploma.

Delegates

to the annual Southern Baptist Convention, Oklahoma City, May 15th to 23rd, who are familiar with modern travel comforts, will use the



BETWEEN

St. Louis and Oklahoma City

BECAUSE

The Frisco is the shortest line and makes the fastest time.

Frisco trains leave at convenient hours and are equipped with Steel Coaches, Steel Chair Cars, Steel Dining Cars, (Fred Harvey meals), and Electric-Lighted Sleepers.

The Frisco will no doubt be named the Official Route to this Convention.

For detailed information as to Special Train Service, fares, schedules, etc., address

J. F. GOVAN

D. P. A. Frisco Lines

409 West Walnut Street

Cincinnati, Ohio

... WOMEN'S DEPARTMENT ...

Central Committee.

Miss E. S. BroadusChairman
1227 Third Avenue.
Mrs. B. A. ReesTreasurer
2326 Longest Avenue.
Nona Lee DoverSecretary
Box 396.

MAY, 1911, TO MAY, 1912.

Foreign Board—W. M. S., \$7,801.24; Y. W. A., \$7,854.14; Sunbeams, \$368.54; Royal Ambassadors, \$35.36. Total, \$10,064.27.

Home Board—W. M. S., \$4,384.94; Y. W. A., \$533.36; Sunbeams, \$245.06; Royal Ambassadors, \$13.90. Total, \$5,147.24.

Sunday School Board—W. M. S., \$75.85; Y. W. A., \$18.95; Sunbeams, \$2.60; Royal Ambassadors, 59c. Total, \$97.99.

Margaret Home—W. M. S., \$71.20; Y. W. A., \$3.50; Sunbeams, \$24.05; Royal Ambassadors, \$1.25. Total \$100.

Training School (Current Expenses)—W. M. S., \$365.10; Y. W. A., \$48.75; Sunbeams, \$1; Royal Ambassadors, 15c. Total, \$415.

Training School (Enlargement)—W. M. S., \$435.96; Y. W. A., \$39.25. Total, \$475.21, Students' Fund, \$225.

Totals—W. M. S., \$13,364.27; Y. W. A., \$2,497.95; Sunbeams, \$641.25; Royal Ambassadors, \$51.24. Grand Total, \$16,554.71.

A report will be made later of what was given to State Missions and Mountain Schools.

KENTUCKY REPORT.

That we have failed to increase our gifts to the Boards is a matter of deep sorrow. But it is due partly to the trying seasons of cold and of rain, for which we are not responsible. Every effort has been made to arouse our women to a sense of the great need and their duty.

The summer's campaign of our Field Worker was among hitherto uninterested churches and Associations, and much interest was aroused, which we hope will bring increased contributions another year. An advance was made by employing an Of-

fice Secretary and Field Worker for all her time, and she has been indefatigable in trying to organize new societies and kindling new zeal in our Associational Vice Presidents. By the kindness of the State Board we are provided with an office, including the most necessary articles of furniture, and wish to acknowledge many courtesies from the office staff of the Board.

Again the Y. W. A.'s have exceeded their apportionment for Foreign Missions, a source of deep thankfulness. This is partly due to a five hundred dollar contribution for the Jubilee Fund. All the pledges to the Jubilee Fund have been paid, amounting to \$4,367.35 and this will be devoted to building a school for girls at Wuchow, China. It is much desired that the amount be increased to \$5,000, so that we may also provide the equipment.

CHANGES.

Miss Dover leaves us May 1st, for a home in another State. Regretting as we do that we must give her up, we are thankful for the months of labor she has spent in Kentucky, and we wish her all possible happiness in her new relations. That she will be useful always is certain.

The vacant place will be filled by Miss Margaret Butler Webster, an honor graduate of the Louisville High School, and of the State University, who has had some experience in teaching also. Her specialties are mathematics and English, which will be peculiarly helpful in her work of keeping our books and writing or speaking for missions. Best of all, is her true Christian character, burning enthusiasm and engaging manner. Address her, Box 396, Louisville. It is best to make all checks payable to Central Committee, W. M. U. and then new names do not have to be remembered. Miss Webster may be found at 205 East Chestnut, from 3 to 5 p. m.

REMEMBER.

The Boards will be needing money on missionaries' salaries in May and June just as much as in March or April. Send us your contributions, and let this be the best first quarter we have ever had

E. S. BROADUS.

A Call to the Young Women's Auxiliaries.

Blue Ridge, near Black Mountain, sounds like the Alleghenies, and a place for a Summer Conference. Now during these early spring days carpenters, masons, plumbers and other workmen are busy on the mountain-side making ready the New Home of the Annual Southern Conference, under the auspices for the Missionary Education Movement, formerly Young Peoples' Missionary Movement, for June 25 to July 4, 1912. By that summer date all will be in shipshape form for the young people of the Southland to gather for ten unique days. As Dr Ray says, "There is nothing like it."

This year's aim is to have every State represented by a Y. W. A. delegation, led by the State Y. W. A. Leader. If something, really truly, a good reason, keeps a State Y. W. A. Leader from going herself, then it would be splendid for each State Central Committee to see that a substitute Leader attends. One State Y. W. A. Leader has already written to the Woman's Missionary Union Baltimore Office, that she plans herself to go and take as many as she can secure for her State delegation. Another State Y. W. A. Leader, who attended the Summer Conference of two years ago, writes that it is her belief that it would be a wise investment of time and money for every State to send their Y. W. A. Leader with her delegation. One local Y. W. A., in another State, is earning a Conference fund, aside from all contributions being used for Missions, to pay part expenses of a representative. Of course the States nearest Blue Ridge will have the best chance for the largest delegation, but it may not be so. If all the organizations of even small churches would combine in the effort to send a representative, many more might be sent.

How much will it cost in money? Not much, when we count the gain. There are the expenses of: (1) room and board, \$15.00 for the ten days; (2) enrollment fee, \$5.00; (3) railroad fare, which will vary with the distance of course, and (4) incidental expenses, which can amount to very little.

What will it mean to go to Blue Ridge? Much more, but from the very first we know

that it is to come away from the strain and stress of every day life and, after hours in a railroad train, to land up in the mountains, under a sunset sky, in the midst of a world of young people, scores of strong, stalwart, handsome young men and numbers of pretty, gay-hearted, laughing, loving girls, gathered from all our broad Southland, East and West—This is to arrive at Blue Ridge.

Nancy Lee Swann,
Baltimore, Md.

RECEIPTS FOR APRIL.

Baptist Ass'n—Laurenceburg S. S., T. H. P., \$10.60; Battle ch., R. E. B., \$10; Goshen ch., D. A. D., \$13.19; Lawrenceburg ch., Miss M. P., \$62.59; Guthrie ch., Mrs. M. D. Lawrenceburg ch., Miss M. P., \$62.59; Guthrie D., \$86.20; Lawrenceburg ch., Miss M. P., \$4.

Barren River Ass'n—Fountain Run ch., R. S., \$12; Summershade ch., T. F. G., \$4; Antioch ch., \$4.63; Big Meadow ch., \$2.67.

Bay's Fork Ass'n—Scottsville ch., A. B. G., \$23.50; First Bapt. ch., Scottsville, W. T. P., \$70; New Salem ch., N. T., \$6.65; Scottsville S. S., A. L. R., \$11.80; Bethlehem ch., N. B. T., \$8.25.

Bell County Ass'n—Middlesboro ch., C. O., \$104.57.

Bethel Ass'n—H. H. A., \$727.14; Auburn ch., C. C. D., \$37.50; Auburn S. S., C. S. D., \$12.70; Spring Valley ch., \$32.27; Olivet ch., H. H. A., \$50; Olivet S. S., H. H. A., \$5.28; Mt. Gatead ch., H. H. A., \$65.04; Auburn ch., C. C. D., \$23.25; New Hope ch., J. F. B., \$121.55; Whitaker's Grove, H. H. A., \$32.30; Elkton ch., H. H. A., \$17.10; Bethel ch., H. H. A., \$65; Spring Valley, H. H. A., \$1.80; Salem, H. H. A., \$146.75; Trenton ch., H. H. A., \$99.77; Walnut Grove ch., A. B., Tr., \$49.19; Muddy River ch., H. H. A., \$50; H. H. A., Tr., \$462.55; Auburn ch., C. C. D., \$28; Pembroke S. S., H. H. A., \$88.09; H. H. A., Tr., \$188.89; Guthrie ch., Mrs. M. D. D., \$86.20.

Blackford Ass'n—H. D. B., Tr., \$78; Mt. Eden S. S., \$10; H. D. B., Tr., \$250; H. D. B., \$53.10; H. D. B., \$20

Blood River Ass'n—Murray ch., J. L. P., Tr., \$70; Gilbertsville ch., J. L. P., Tr., \$30; Cherry Corner ch., \$20; Locust Grove,

**THE
HENDERSON
... ROUTE ...
L. H. & ST. L. RY.
A Kentucky Road
For Kentuckians
Thru Kentucky
TO
OKLAHOMA
AND ALL POINTS
WEST**

**For Rates or Further Information,
Address**

E. M. WOMACK,
City Pass. Agt.

R. F. PENN,
Trav. Pass. Agt.

S. W. Cor. 4th & Main

LOUISVILLE, - KENTUCKY

\$6.75; Calvert City, \$16; Oak Grove, \$1; Murray ch., J. L. P., \$1,373.98; Calvert ch., M. G., \$32; Murray ch., H. B. T., \$18.01; J. L. P., Tr., \$627.14.

Boone's Creek Ass'n—Mt. Olivet ch.; Mrs. A. J. G., \$30; M. C. H., \$5; First ch., Winchester, W. P. H., \$703.40; First ch., Winchester, S. S., W. P. H., \$60; Central Winchester, \$74.85; Ephesus ch., \$16.10; Union City ch., \$12; Providence ch., \$6.05

Bracken Ass'n—Mt. Olivet ch., W. C. C., \$13.24; Millersburg ch., L. D. L., per J. W. P., \$45.50; Augusta S. S., Rev. J. P. S., \$10; Farmers S. S., Wm. M., \$8; Ewing ch., H. C. B., \$16.25; Maysville ch., T. F. G., \$165.34; Lewisburg ch., T. F. G., \$14; Dover S. S., \$3.44; Flemingsburg ch., \$8.25; Mt. Pisgah, \$4.65; Mt. Sterling ch., W. T. T., \$160.75; Carlisle ch., Rev. B. F. S., \$50; Mays Lick, S. M. R., \$100; Mt. Pisgah, T. F. G., \$29.45; Two Lick ch., 57.35; Olive Hill ch., R. T. K., \$3.

Breckenridge Ass'n—Rev. J. J. W., Sec., \$34.10; J. J. W., Sec., \$12; Goshen ch., R. T. D., \$150; Cloverport ch., R. L. O., \$40; Black Lick ch., C. L. M., \$7; Hardinsburg ch., J. J. W., \$4.50; Cloverport ch., E. O. C., \$3.

Book Sales—Miss A. S., 50c; Miss N. L. D., 10c; W. W. P., 98c; W. D. P., \$7.60; Miss D., 25c; P. H. K., \$3.35; L. J., \$2.50; Mrs. E. A. B., 60c; R. E. B., 06c; Miss N. L. D., 40c; Cash, 25c; Dr. C. M. T., \$11.52; Miss N. L. D., 35c; C. P., \$7.

Campbell County Ass'n—Licking Valley ch., C. E. B., Tr., \$2.18; Licking Valley S. S., \$2.71; Mentor ch., \$4; First Twelve Mile ch., \$3.87; First Twelve Mile S. S., \$1.88; First ch., Newport, R. E. K., \$80; First ch., Newport S. S., \$10.63; Grants Lick ch., \$22.50; Second Twelve Mile ch., \$13.50; First Twelve Mile, \$1.12; Mentor S. S., \$5.65; Licking Valley ch., \$1.80; Licking Valley S. S., 38c; Dayton ch., \$170; Pleasant Ridge \$12.80; Wilmington ch., Mrs. L. M., \$3; W. A. B., \$10; First ch., Newport, R. E. K., \$50; Bellevue ch., B. H. P., \$87.50; Wilmington ch., C. E. B., \$48; Pleasant Ridge ch., \$22.80; Mentor ch., \$3; Mentor B. Y. P. U., \$2.25; Mentor W. M. S., \$2.

Central Ass'n—Springfield, J. O. B., \$167.38; Springfield S. S., \$34.51; Lebanon ch., \$52; Lebanon ch., \$15; Bethlehem ch., \$15.

“CHURCH DISCIPLINE”

BY

J. D. MADDOX, M. D.

Secretary Baptist Ministers' Aid Society of Kentucky.

WHAT SOME THINK ABOUT IT:

“I have read your valuable production, “Church Discipline,” with interest and profit. It is a booklet which every pastor should have, and not only possess, but use. I wish for it the widest possible circulation.”—WM. D. NOWLIN.

“This day I have re-read your tract on ‘Church Discipline,’ and am greatly pleased and edified. It is timely, clear and strong. In this day of laxness, both churches and preachers need it.”—A. S. PETTIE, D.D.

“I read the book very carefully. I find it is made of strong, intelligent, well-arranged Scriptural grounds, and it fills a gap in our Church Polity much needed in this loose age and mad rush for numbers, rather than quality among Baptists. Hope you will enlarge and reprint it. I feel that then it would become a standard work on the subject.”—J. W. WALDROP.

“A tract of 47 pages, by Dr. J. D. Maddox, of Owensboro, Ky., came to me this morning. As I was planning a big and busy day’s work, I read the preface and first paragraph, intending to take a taste, and read it at a more convenient day. But I did not stop till I had read to the last word. My judgment is, while the spell is on me, for I have just finished the reading, that it is the best document on the subject that I know anything about. I wish every pastor would take the best Sunday hour and read it, with a little comment, to the church, and to the world assembled with it. In the present and general condition of things, it would do more good than any sermon he could preach, and the church and cause is entitled to the best service he can give. Get ‘Discipline’ before your churches ere they die.”—J. B. MOODY.

“‘Church Discipline,’ by Dr. J. D. Maddox, is a most timely and able treatise on this greatly neglected topic. It is clear, concise and Scriptural. In this age of visions, movements, conventions, clubs, and union fads, it is frequently worth a pastor’s reputation and position to ‘contend earnestly for the faith,’ to teach doctrine, preach the Word and warn men against the delusive doctrines of false teachers. The book defines ‘Discipline,’ treats of the Trespasser, the Disorderly, the Heretic (and, oh, how many there are who ‘pervert the right ways of the Lord’), the Pastor’s Duty, Gross Immoralities, Special Instructions, Opinions of Able Expounders of the Word, Illustrations. The whole treatise shows the wisdom and safety of both the church and individual, who heeds the Saviour’s warning, ‘Abide in my Word.’ If every Baptist in the land would read and heed its teachings, incalculable benefits would accrue to our churches.”—J. G. BOW.

A member of one of the leading District Mission Boards in the South says: “Our colporter has sold 24 copies of your book on “Discipline.” He is anxious to push its sale. What can you furnish them to us for? Give your best rate including freight.”

15 CENTS, POSTPAID.

Special Price in Quantities.

BAPTIST BOOK CONCERN,

(Incorporated.)

636-638 FOURTH AVENUE LOUISVILLE, KY.

57; Mouldroughs Hill ch., \$16.66; Willisburg S. S., \$5.02; Lebanon S. S., \$7.50; New Hope ch., Miss C. M., \$5.59; New Hope ch, S. H., \$9.01.

Concord Ass'n—Greenups Fork S. S., Rev, W. L. S., \$25; T. H. T., Tr., \$250; Mt. Pleasant ch., J. B. T., \$22; Drennens Ridge ch., S. J. E., \$55.20; Dallasburg ch., I. E. D. A., \$214.75; Greenups ch., W. L. S., \$105.50; Owenton ch., \$15.75; Long Ridge ch., J. B. H., \$134; Owenton ch., \$114.90

Crittenden Ass'n—Williamstown S. S., F. M. C., \$11.96; Crittenden ch., I. W. B., \$50; Short Creek ch., T. J. B., \$25; Gardnersville ch., \$19; Knoxville ch., \$12.25; Gum Lick, T. J. B., \$30; Mt. Zion ch., M. K. S., \$71.26; Crooked Creek ch., I. W. M., \$10.25; Dry Ridge ch., R. L. S., \$44.

Daviness County Ass'n—Oak Grove ch., W. R. R., \$1.35; Richland ch., \$10.12; Buck Creek ch., \$7.88; Calhoun ch. B. Y. P. U., \$3.40; Seven Hills ch., C. T. B., \$13; First ch., Owensboro, J. B. B., \$189.69; Onton ch., E. W. N., \$27.57; Glennville ch., Mrs. B. B., \$48; Sugar Grove ch., O. D. H., \$94.50; Buck Creek ch., W. H. Robinson, \$18.76; South Hampton ch., \$123.63; South Hampton S. S., \$2.12; Livermore ch., \$59; Panther

Creek, \$9.13; Maceo ch., \$100; Oak Grove, \$73.63; Walnut St., \$60.09; Sorgho, \$26; Sacramento, \$15.10; Pleasant Grove, \$78.35; Pleasant Ridge, \$22.38; Whitesville, \$162.50; Old Buck Creek, \$22.15; Island, \$50; Calhoun, \$7.32; Calhoun B. Y. P. U., \$8.50; Hall St., \$4.75; Sugar Grove ch., \$13.66; Buck Creek W. M. U., \$11.08; Stanley W. M. U., \$10; Pleasant Grove W. M. U., \$67; Pleasant Ridge W. M. U., \$10.45; Dawson ch., W. H. R., \$12.57; Yellow Creek, \$82.04; Bethabara, \$375; Eaton Memorial, \$18; Station, \$36.50; Calhoun, \$52.76; Stanley ch., \$20; Stanley S. S., \$1; Pleasant Grove, \$49; Third ch., Owensboro, \$405; Seven Hills W. M. U., \$10; Brushy Fork, \$19.43; Hall St., 26c; Hall St. B. Y. P. U., \$5; Songho, \$103.51; Buck Creek ch., \$7.12; Buck Creek W. M. U., \$5.54; South Hampton, \$7.61; South Hampton S. S., 42c; Livermore ch., \$29.50; Panther Creek, \$4.56; Sugar Grove, \$6.82; Oak Grove, \$57.11; Walnut St., \$16.23; Sacramento, \$7.55; Pleasant Ridge, \$9.44; Pleasant Ridge W. M. U., \$5.2; Whiteville ch., \$81.25; Old Buck Creek, \$10; Island, \$20

(Continued on first page of Supplement.)

17c a Day Buys an

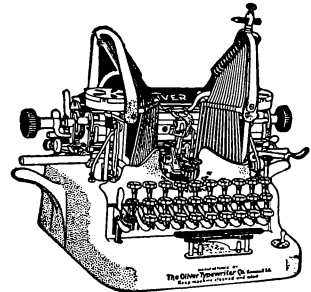
OLIVER

The Standard Visible Writer

Can you spend 17c a day to better advantage than in the purchase of this wonderful machine?

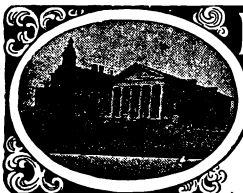
Write for Special Easy Payment Proposition, or see the nearest Oliver Agent.

THE OLIVER TYPEWRITER AGENCY
313 Third Street Louisville, Ky.



Save your pennies and own

Printype—
OLIVER
Typewriter.



Liberty College FOR YOUNG LADIES
ESTD. 1874

A SELECT AND HIGH GRADE SCHOOL

Modern equipment. Laboratories. Steam heat. Libraries. Gymnasium. Delightful climate. School opens Sept. 14th. Send for catalog.
R. E. HATTON, Ph.D., President. REV. G. M. BUSH, A. M., Associate Pres-
GLASGOW, KENTUCKY.

A CHAPEL FOR PATRONS



LEE E. CRALLE

Funeral Director

S. W. Cor. 6th and Chestnut Sts.
Telephone Main 430

LOUISVILLE, - KENTUCKY

MOLL & CO.

Incorporated

Printers, Binders

Publishers

638 Fourth Ave. Louisville, Ky.

Home Phone 351 Correspondence Solicited

BLUM ART GLASS CO.

INCORPORATED

Maker of Church Windows

640 Third St. Louisville, Ky.

“ANITA”

AMERICAN LIGHTEST WATER

Always Pure, Fresh & Invigorating



THE BEST COOLER ON THE MARKET

Anita Spring Water Co.

INCORPORATED

PHONES { Home 4520
Cumb. M. 1468-A

Our New Plant, 210-212 Pearl St.
LOUISVILLE, KY.

---WE ARE---

MANUFACTURERS OF

MONUMENTS

Of High Class, But Moderate Prices

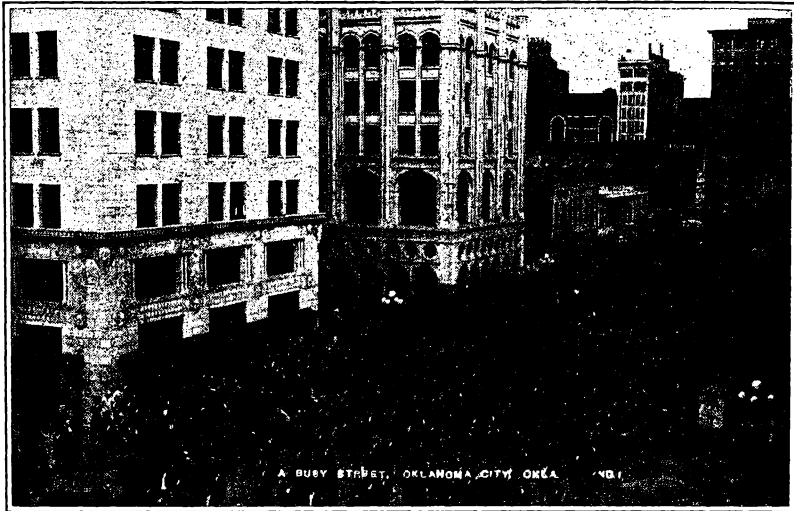
Peter-Burghard Stone Co.

SALESROOM

317 W. Jefferson St.

PLANT
13-14 Maple St. Louisville, Ky.

Will You Be There?



If you expect to attend the Southern Baptist Convention at Oklahoma City, May 15-20

THE WAY TO GO IS VIA



Two fast trains combining every essential for comfort, speed and safety.

The Katy Limited from St. Louis at 9:35 A. M., from Kansas City at 5:30 P. M.

The Katy Flyer from St. Louis at 8:32 P. M., from Kansas City at 2:20 A. M.

For particulars see nearest agent or address

Geo. S. Stein, D. P. A., M. K. & T. Ry.

408 Traction Bldg.

Cincinnati, Ohio