

Kentucky

Mission Monthly

OFFICIAL ORGAN OF KENTUCKY BAPTISTS

Entered Feb. 5, 1903, at Louisville, Ky., as Second-class matter, under act of Congress, March 6, 1879.

FEBRUARY, 1912

25 Cents a Year

W. D. POWELL, - - - - - EDITOR
 LOUIS ENTZMINGER, - SUNDAY SCHOOL EDITOR
 MISS E. S. BROADUS, - EDITOR WOMAN'S DEPT.
 A. E. WOHLBOLD, - - - BUSINESS MANAGER

General Association of Baptists in Kentucky

Officers

C. M. Thompson, Moderator F. D. Perkins, Asst. Moderator
 M. E. Dodd, Asst. Moderator John L. Hill, Sec'y. A. E. Wohlbold, Asst. Sec'y.

Executive Board

J. D. Coleman, Chairman, Louisville, Ky. R. E. Reed, Secretary, Louisville, Ky.
 Thos. D. Osborne, Treas. Louisville, Ky. J. F. Griffith, Asst. Sec. Louisville, Ky.

J. A. Booth, Taylorsville	E. C. Farmer, Louisville	H. A. Porter, Louisville
W. T. Bruner, Louisville	A. Gatliff, Williamsburg	W. J. Puckett, Cave City
Lee E. Cralle "	J. S. Gatton, Glendale	M. E. Staley, Fulton
R. L. Carter "	W. E. Hunter, Princeton	B. F. Swindler, Carlisle
J. G. Caldwell "	W. W. Landrum, Lou'ville	N. C. Shouse, Louisville
S. J. Cannon "	W. E. Mitchell, Pembroke	H. B. Taylor, Murray
E. O. Cottrell, Owensboro	T. H. Plemmons, Covingt'n	C. M. Thompson, Hopkinsville
M. E. Dodd, Louisville	J. W. Porter, Lexington	J. M. Walker, Crestwood
C. W. Elsey, Cynthiana	W. W. Payne, Franklin	J. S. Wilson, LaGrange
F. W. Eberhardt, Frankf't	T. J. Porter, Winchester	J. W. Waldrop, Owenton

Baptist State Board of Missions

Rev. W. D. Powell, Cor. Secretary; 205 E. Chestnut St., Louisville, Ky.
 Louis Entzminger, Sunday School Secretary; 205 E. Chestnut St., Louisville, Ky.

Kentucky Central Committee

Miss E. S. Broadus, Chairman; 1227 Third Ave. Louisville, Ky.
 Miss Nona Lee Dover, Secretary Box 396, Louisville, Ky.

Baptist Minister's Aid Society

J. D. Maddox, Corresponding Secretary; 508 Daviess St., Owensboro, Ky.

Baptist Education Society of Kentucky

Rev. M. B. Adams, Corresponding Secretary; Frankfort, Ky.

Published Monthly at 205 East Chestnut St., Louisville, Kentucky

..Rock Island Lines..

THE BEST ROUTE TO THE WEST & SOUTHWEST

Hot Springs

Arkansas

Oklahoma

Louisiana

Texas

Kansas

California

Colorado

Low Homeseekers Round Trip Fares First and Third Tuesdays in Each Month.

Route of "The Golden State Limited" every day from St. Louis and Chicago to California. Also up-to-date service from Memphis via Little Rock and Oklahoma City to California.

Detailed information as to rates, etc., address

H. I. McGUIRE, Dist. Pass. Agt. 38 E. 4th Ave. CINCINNATI, OHIO

**Merchants, Manufacturers, Doctors, Lawyers
and other Professional Men.**

NOTICE!

If you have no fireproof safe or vault, what will you lose if your valuable books and papers are destroyed by fire?

Write or call for prices and terms on

The Halls' Safe Co.

W. J. VETH, Dealer

136 North Third St.

Home Phone 5257

LOUISVILLE, KY.

N. B.—Second hand Safes bought and sold. Safes when locked, opened and repaired.

The Kentucky Mission Monthly

“LET HIM THAT HEARETH SAY COME”

VOL. XI.

FEBRUARY, 1912

No. 10.

A PILGRIMAGE SOUTH.

During my vacation I have travelled entirely through Kentucky, Tennessee, Alabama, Mississippi, Louisiana and Texas.

In Nashville, on December 20th, I married my nephew, Mr. W. E. Overall to Miss Evelyn Espy. He is a good man and she is a most excellent woman. He is the only son of my wife's only sister. Thirty-five years before I married his father and mother. How the time flies! During my brief stay in Nashville I saw Secretaries Gillon, Frost and Editor Van Ness and several of the pastors. I attended a meeting of the City Missionary Society. They were trying to dispose of some undesirable lots which had been purchased by an inexperienced committee and on which payments were due. One lot was too near an existing church. Great care and discretion must be used in the purchase of suitable lots properly located on which to erect churches or mission stations.

Nashville Baptists have grown rapidly during the past few years. Dr. R. W. Weaver is now erecting a splendid auditorium in the best portion of the city.

I stopped in Montgomery and had a pleasant visit with Secretary Crumpton. He, like Secretary Gillon is greatly encouraged in his work.

In New Orleans I met pastors Lawrence and Flowers who were very courteous in showing me over the city. We visited three of our most promising mission churches.

The Home Board is to be congratulated on the wisdom displayed in the choice of lots and the buildings erected. It speaks volumes for the sagacity of Secretary Gray.

There are 1,000 Baptists in New Orleans but they are struggling against great odds. Romanism overchadows every thing and it stands for the destruction of every principle which distinguishes our Baptist folk. Baptists who move to that great and

growing city are in the main lost to us. When Christians become worldly they soon become worthless. Every inch of ground that Romanism gains in America is that much loss to our moral and spiritual forces. Others may brother them who wish, I do not; yet, I am persuaded that there are Christian people in the Romish heirarchy. They are such in spite of and not because of the teachings of Rome. I will pay a liberal reward for information of the excommunication of any Catholic for any immoral or diabolical deed. Reading the Bible, hearing the gospel preached, exercising the God-given privilege of thinking for themselves or daring to doubt or disobey the edicts of the councils of Rome are the only causes for excommunication.

People are excommunicated in our neighboring state of Indiana for patronizing the public schools. Romanism demoralizes the people wherever it gets in the ascendancy. Competition with evangelical truth and the presence of the Bible makes Romanism in the United States much beter than it otherwise would be.

In Mobile our chruches are burdened with crushing debts for expensive temples, recently built. Strange that brethren will build beyond their abilities, thus paralyzing their usefulness, and putting their very existence in jeopardy.

The present pastors are giving a good account of themselves and bravely facing the situation. May the Lord lead them to victory.

I regretted that my limited time did not permit my stopping in Houston, Austin, Waco, Fort Worth and Dallas.

I met pastor Porter in San Antonio. He is doing a superb work. The Baptist cause is well established and prospering, except among my Mexican people. A revolution is needed in the Mexican work in Texas, according to my best information. Marvelous

Continued on page seven.

... EDITORIAL ...

A CONCRETE EXAMPLE.

A BOOK ON STATE MISSIONS.

It is highly probable that the State Secretaries at their annual meeting in Asheville, will make provision for the publication of a book on "State Missions." This is very much needed for our Mission Study Classes, our Sunday Schools and our B. Y. P. U. work. There is some fear that in perusing the multitude of books on Home and Foreign Missions our young people, and some others, will overlook and fail to appreciate the fundamental and basal character of State Mission work. On its success depends the progress and vitality of Home and Foreign Mission work.

Dr. W. T. Derieux, Corresponding Secretary of the Baptist State Board of Missions for South Carolina, succeeded in this past winter, by the hearty co-operation of the pastors of the State, in canceling a troublesome debt that had hung over State Missions for some years; but in doing so he over-worked himself and has been ordered by the Board to take six weeks of absolute rest.

The Foreign Board had the Vice-President of each State with them in a two days' meeting recently. There was much prayer and planning as to how to meet the demands upon our stupendous Foreign Mission enterprise. It is expected that great good will result from the meeting.

What are you doing about the collections for Home and Foreign Missions? The treasuries of both Boards show conditions that are little less than alarming. Pastors and churches must be actively engaged, and earnest prayer must ascend from our congregations that God will open the hearts of his people to meet the urgent demand upon us. Kentucky knows no such word as fail. With the co-operation of our noble Baptist women we will pay our full quota to the Home and Foreign Boards.

Rev. A. Cree has become missionary pastor at Louisa. His congregations are large and he is greatly encouraged in his work.

We may well use the work at Pollard, Ky., as a concrete example of the great good being accomplished by the State Board of Missions.

A noble young man, who had just completed his course at the Seminary, was induced by the Board to go to the Mountains and locate. He visited Pollard church and it was a case of love at first sight. They called him for half-time and in a short while he wisely induced them to go to full time. New life was put into the old body. additions were frequent, the Sunday School and prayer-meetings and everything prospered. Then the wise pastor suggested that they tear down the old structure and erect a commodious and up-to-date brick structure, trimmed with stone, that would meet all their requirements. They proved to be "following brethren," and heeded his suggestion and on Sunday, January 21st, we provided for the balance of \$1,500 due on the building which had cost \$5,000, and it was dedicated to the service of God. The auditorium will seat 400 and the building has ample Sunday School rooms.

The pastor and his people are happy and full of hope. On the day of dedication four people were converted and received for baptism, and the pastor followed in a few days' meeting in which fifteen joined.

The church, though building, has not failed to give more to Missions and all our denominational interests than ever before in its history. Pastor Doll is one of our rising men and God has signally set his seal of approval upon his labors.

We hear nothing but good reports of the fine work being done by Rev. R. H. Tolle, in Catlettsburg. We are sure that his people will rally around him and heartily co-operate with him. He is a wise leader and always wants to see the work going forward.

There are some choice spirits in the Pollard church. There is quite a strong Methodist church at Pollard and on the day of dedication one of the members gave \$5.00. Another member of the Methodist church contributed some building material and promised to donate a part of the money due him for services rendered. The woman

who gave the \$5.00 said that if it was known at her boarding house that she would be turned out. Such prejudice!

In a little while the small amount with which the State Board now supplements, the pastor's salary will be assumed by this noble church.

The work is all the more remarkable because they are laboring people and one-half of them are now without employment.

A NEW FIELD ENTERED.

We think we have made arrangements by which our Missionary in Letcher county will preach once a month at the new town of Jenkins. The Company provided a house which is given to each denomination one Sunday. We have had an intimation that one denomination tried to arrange so that they would have somewhat exclusive privileges.

SPECIAL NOTICE No. 3.

1. With gratitude we report that in our work as State Mission Board Committee to promote the Kentucky Mission Monthly circulation a good beginning has been made.

Success is certain for the Baptist Sisterhood has started to assist in getting 10,000 subscribers.

2. Remember that we give every Baptist woman 10 cents for each new subscriber to the Monthly at 25 cents per year. This applies only to new subscribers, and does not apply to clubs for the Home Field and Foreign Mission Journal.

3. We want especially every pastor's wife; every superintendent's wife; every deacon's wife; every Woman's Missionary Society member; every woman teacher, to accept this offer, and use their pay for any good purpose.

Sincerely,
THOS. D. OSBORNE.
M. E. DODD.
J. F. GRIFFITH.

Send acceptance by return mail.

..... Church
P. O.
I accept this offer.
Name

GOOD NEWS FROM MISSIONARY HARDIN.

Missionary Franklin Hardin reports a fine work at Unity Baptist church, and also at the Hampton City Baptist church. There have been 111 accessions.

The Sunday School at Unity has gone from seventy-five to 165. The primary class in the Sunday School has forty-five.

They feel that their house of worship at Unity is too small and steps may be taken later in the year to try to build. Bro. Hardin is a hard worker and seems to be accomplishing great good.

More of our people must remember our Mission work in their wills. We need large sums of money to aid in the extensive church building that we are doing at needy points throughout the State. Then in many sections of the country churches are being weakened by the tendency of so many prosperous farmers to move into towns and cities.

A large permanent fund should be provided, the interest of which should be used to maintain the work at these weak and important country centers. Let us never forget that the city churches receive some of their finest recruits from the country.

Our church at Frankfort, in the past few years, has become quite a wealthy congregation by the fact that the wealthier people from adjacent farming districts have moved into town.

Everyone is elated and delighted at the splendid work being wrought by our Sunday School Secretary and his co-laborers.

Sunday Schools and churches must remember that it requires money every month to keep this splendid work going and we look to them to furnish us the means. Every Baptist Sunday School should make a large offering and send it to us for the Sunday School work. You believe in this Sunday School work, then help support it.

This is a splendid time to get subscribers and renewals to our "Kentucky Mission Monthly," and also to the Home and Foreign Journals; the three journals, sixty cents per annum.

TIDINGS FROM THE BIG SANDY.

I should like to give all our people a view of the mountain work, but that can not be done on paper, for only the man who comes and stays for months on the field knows the task can not be adequately portrayed in words. The reader gets the silver lining; the visitor gets a glimpse of the immensity of the work; the worker knows—and knows that he knows what others can not know until they come and labor with him.

This great section of our beloved State is not to be won for Christ in a day. Our people must not expect to hear of sections and counties being converted in a night. There is every kind of "ism" here and while the great majority of people are of Baptist sentiment they are not running pell-mell over one another to join a Baptist church. We must carry on our work like the Scottish clans calling their men to battle, by building signal fires of the Gospel upon these mountains, until the yeomanry of the dale and hill are enlisted for the Lord.

There are 78,000 people in the counties of Pike, Floyd, Johnson, Magoffin and Martin, over seven years of age, and not in any way connected with church or Sunday School. These counties comprise Enterprise Association.

For the brethren, Setzer, Amerson, Barnes, Padget, employed by the Board and churches, co-operating together, I want to say, that they know what Baptists stand for, and stand for the same. They are loyal and self-sacrificing and are building a foundation for a great work. There are quite a number of godly ministers, born and bred among the mountains, of our association, but we are praying for God to raise up more.

Our church here, has received eight by baptism and five by letter since May 14, 1911.

Tell our people through the State not to look for this land to come with a rush, but put their ears to the ground and they shall hear the steady tramp of the mountain host.

Pikeville, Ky.

W. S. Shipp,

HOW A MISSIONARY BUILDS SERMONS
AS HE BUILDS HOUSES OF
WORSHIP.

Perhaps some of the readers would like to hear a word from our field. We realize we have not kept our promise very well, as we promised some of our friends a line in your columns a long time ago. But we are sure if they could have been with us since May, 1910, and up to this time, they would not blame us for this silence. We came to the Big Sandy Valley just after the meeting of the Southern Baptist Convention, in Baltimore, and God has been good to us. He has let us build three nice church houses—Pikeville, the County Seat of Pike county; Prestonburg, the County Seat of Floyd county, and Louisa, the County Seat of Lawrence county. It has been hard work as we had to hunt up the overalls and unlock the tool-chest which we had thought closed for good, when we entered the ministry, but yet there has been a joy in it all. Six days hard work each week, and two sermons on Sunday, keeps one busy and that is what we need. When the church houses were done a good brother said if we would make the drawings and look after the building he would furnish the ground and money to build us a house to live in, and we have it almost done. Then we hope to cease from house building for a while and devote our time to preaching the Word.

We are hoping that the year 1912 may be the best year we have ever had in the Master's service. Our Sunday School is keeping up well and prayer-meetings and preaching congregations are growing.

The Winter Term of the Prestonburg Baptist Institute is in full blast. The Christmas holidays are over, but we still have much to remind us of the generous treatment we received at the hands of our good people. It is indeed a joy to be a pastor and to be at home with the loved ones again after years of work which kept us away from home. Will all of the readers pray that God will bless and use me here where there are such great possibilities?

Prestonburg, Ky.

R. A. Barnes,

Continued from page three.
has been the growth of San Antonio since I first knew it. There are 90,000 people. The St. Anthony is one of the finest hotels in the South and there are two others nearly as good. I nominate San Antonio as the meeting place of the Southern Baptist Convention in 1913. There is a suitable hall for the meeting.

It would strengthen our Baptist cause in the great Southwest Texas country and afford many of us an opportunity to visit our friends in Texas and our work in Mexico.

We met in Baltimore, then Jacksonville. We now meet in Oklahoma City, next let us go to San Antonio, that quaint city full of historic interest and we will have visited the four corners of our great territory. In May the thousands of winter tourists will be gone and ample hotel accommodations can be had.

I spent Christmas with my oldest daughter who married Rev. Harvey Carroll Smith, pastor of the Baptist church in Bartlett, Texas. They have an interesting family of girls and we had a happy time. It was altogether too short. One of the two days was Sunday. Bro. Smith insisted that I give them a talk as I refused to preach. There was such a tender, spiritual feeling pervading the congregation that at the conclusion of the service the pastor proposed a free will offering for Buckner Orphan's Home and \$100 was contributed! How those Texans do give when the notion strikes them! Pastor Smith is greatly beloved by his flock and has accomplished a great work.

This was the first time I had seen them in years. I hurried on to Archer City to visit my brother. He has a lovely family of eleven children. All are Baptists. On December 27th I married his eldest daughter Nell to Mr. Cleveland Heyter, a prosperous business man of that county.

The wild ducks and wild geese were plentiful and my brother had kindly prepared to take me hunting on the third day but I hurried back to my resting place on Mobile Bay.

The weather was fine while I was in Texas. I would have been caught in a blizzard had I remained a day longer.

I had a fine view of the great Southwest-

ern Baptist Theological Seminary in Fort Worth. I longed to visit it but my railroad passes would not be good after December 31st., and I could not tarry.

I had been informed that it was utterly impossible to secure a pass on the railroads in Texas, but I found a gap down and walked in.

We are watching with greatest interest the proposal of Texas Baptists to lead us to larger things in giving to Foreign Missions. We are for a forward move provided there is enough vitality in our churches to sustain it, and that it will not be to the detriment and injury of other important denominational work.

In Archer County, where they have had crop failures from drought for three years, land sells for as much as good lands in Kentucky, where we seldom or never have crop failures from drought for three years, for me, for it is the best of all the States.

I was greatly benefited by my pregrinations but I am rejoiced to be at home and in the harness again. A happy New Year to all!

ANOTHER OF OUR WORKERS RESIGNS

Rev. N. F. Jones, who has been laboring as joint Evangelist of the State Board and Bracken Association, resigns to become pastor at Dayton, Ky.

Bro. Jones has done most satisfactory and effective work in the territory of Bracken Association and we regret to lose him, but we never say no when the Spirit of God leads an evangelist to take pastoral care of some church. An evangelist who does well the work committed to his hands has but little time to spend with his family or his books, and we are always rejoiced to see a man so situated, that while he carries on the work of the ministry, he can be with his family and keep up his studies.

It has been a serious question in my mind whether any man ought to be an evangelist for a period of more than three or four years at a time.

We pray God's richest blessings on Pastor Jones in his new and important field of labor. He is one of our splendid preachers.

... SUNDAY SCHOOL DEPT ...

Louis Entzminger, Editor.
 State Sunday School Secretary,
 205 E. Chestnut St., Louisville, Ky.

Monthly Teacher Training Statement by Associations, February 1, 1912.

Long Run, 266; North Bend, 148; Daviess County, 100; Elkhorn, 89; Bell County, 63; Wayne County, 45; Pulaski, 41; West Union, 40; South District, 35; Crittenden, 31; Ohio County, 29; Campbell County, 29; Tate's Creek, 27; West Kentucky, 26; Little River, 25; Franklin, 23; Ohio Valley, 20; Ohio River, 17; Bracken, 16; Boone's Creek, 14; Bethel, 14; Liberty, 10; Nelson, 9; North Concord, 9; Goshen, 8; Severn's Valley, 7; Simpson, 7; Concord, 6; White's Run, 5; West Union, 4; Enterprise, 4; Blood River, 4; Baptist, 2; Bay's Fork, 2; Warren, 1; Russell's Creek, 1; Gasper River, 1; Three Forks, 1; Gasper River, 1; Freedom, 1; Mt. Zion, 1; Salem, 1; Owen County, 1; Ten Mile, 1; Central, 1.

We have 1,187 Normal Diplomas in Kentucky, which is more than any other State in the South, Georgia coming next with 1,036. We have 95 Red Seals, which is more than any other State in the South, Georgia occupying second place. We have 75 Blue Seals, which is more than any other State in the South, Tennessee coming next with 32.

KENTUCKY SUNDAY SCHOOL NOTES.

Rev. E. J. Weller, of Hopkinsville is leading a class of his workers in the study of Book Number Eight, The New Testament. Bro. Weller and his people are doing some fine work.

Rev. H. B. Wilhoite enrolls with us this week two large classes, one in the Powersville Baptist church, at Brooksville, and the other in the Two-Lick Baptist church at Germantown. These are two of the largest classes enrolled in this office. Bro. Wilhoite is a student at Georgetown College, and in the meantime pastor of these two splendid churches. These classes have been at work for some time, but are just now being enrolled. Some of our pastors who

have no time to do Teacher Training work might find out from Bro. Wilhoite the way he manages to do this work.

We have received the names of a number who, under the leadership of Dr. M. D. Early, of Monticello, are pursuing the Teacher Training work. Things are always on the boom at Monticello.

A very fine class has been organized in the Baptist church at Russellville. This class is working under the leadership of Rev. Charles Anderson, the pastor. Mr. Homer Felts is the superintendent of this wideawake Sunday School. We had quite a pleasant visit at Russellville some time ago and enjoyed several days' work with Bro. Anderson and his splendid people. While at Russellville we spent the week with President Perkins and the student body of Bethel College, where we had the pleasure of speaking several times. A large class of the young men in the institution are doing the Teacher Training work. President Perkins and the able faculty of Bethel College are doing things in a large way. A fine president, a magnificent faculty and an excellent student body, is that Bethel College crowd.

Mr. E. R. Ransom, superintendent of the Teacher Training work of the West Kentucky Sunday School Convention, sends in a number of enrollments for January. He continues to push the work and is lending us valuable aid. This we appreciate very much.

Rev. B. F. Swindler, of Carlisle, having completed five books in the Teacher Training Course already, still pursues this course of study and sends a nice enrollment of a class who are doing fine work at the church in Carlisle.

Miss Lola Griffith, of the First church, Lexington, is a recent Blue Seal graduate. A number of others including Superintendent Bryan, are doing the work. Dr. Porter is loyally supporting the Teacher Training work. This support counts in a large way.

We recently spent a week at Barbourville, Ky., doing some work with Pastor A. C. Hutson, of the Baptist church there, as well as speaking to the student body of Barbourville Institute. We helped Pastor Hutson and his people get the Sunday School well graded, and delivered diplomas

to a good class in the church on Sunday morning. Among the diplomas delivered was a Blue Seal award to the pastor.

A class of the very best students in the Barbourville Institute is now at work on the Convention Normal Manual. Prof. Creach, president of the Institute, we find to be a magnificent Christian man. He gave us every encouragement in projecting the Teacher Training work and it was largely through his influence that the class was organized in the school. They have over two hundred students in the Institute.

We spent several days recently in the Baptist Institute at Prestonsburg, Ky., where a fine class is taking up the Normal Manual under the leadership of President Beam. The school at Prestonsburg is in fine shape and is doing excellent work. Pastor Barnes of the Baptist church there was found to be hard at work building a home in which to move his family. He is not only a good preacher and pastor, but knows how to build churches and pastoriums.

Pastor Setzer, of Paintsville, has a number of workers taking the Normal Manual. Bro. Setzer is doing a splendid work at Paintsville. We greatly enjoyed a short visit with him, where we had a very pleasant evening service and discussed different phases of the Sunday School work.

In reporting some recent enrollments by Rev. J. T. Dougherty, we reported one of his classes at Demossville. While this is the postoffice, this class is in the Wilmington Baptist church, of which he is pastor. This church is one hundred and eight years old. Bro. Dougherty, who is a student at Georgetown College, has a good Teacher Training Class in each one of his churches.

Three of the best Sunday School pastors in the State are in Georgetown College, namely, Rev. H. B. Wilhoyte, Rev. J. T. Dougherty and Rev. Elmo Royalty. They are certainly doing magnificent work.

Bro. D. G. Meers, of Upton, Ky., has been leading a class in the Bacon Creek Baptist church, near Hammondville, and receives his Normal Diploma with the class. Rev. S. A. Sparks was formerly pastor of this church when this work was begun. He speaks very highly of Bro. Meers and these splendid workers. Bro. Sparks is now pas-

tor of the Baptist church at Frankfort, Ind.

Kentucky has for sometime been leading the South in Normal and Blue Seal Diplomas. We are glad to report that in the report from the Teacher Training office, dated January 31st, we are now considerably in the lead in Normal Diplomas, Red Seal and Blue Seal awards.

Among the cities of the South having over one hundred diplomas, we are glad to report that Louisville, Ky., is considerably in the lead.

We want to ask again that all classes and individuals doing Teacher Training work make their enrollments through this office.

Now is a fine time for a great number of our pastors and superintendents who have not heretofore had a part in this work to appeal to their people to take it up. We will be glad to supply any one with literature on the Teacher Training work. A number of large classes ought to be enrolled, and a great host of individuals who can not join in the class work should take up the work at once. Let us begin a new campaign in the interest of Teacher Training work. If every man and woman in Kentucky who now holds a diploma should secure one other to take up the work, inside of the next thirty days, it would be only a short while before the number of diplomas would be doubled. We are making this as a special request. If you believe in the work get some one close to you to begin the work at once. Let us pull together for greater things in the equipment of our Sunday School forces.

We call the attention of our Graded Sunday Schools to the fact that the Convention Normal Manual is used for supplemental work for the Fourth Grade, Intermediate Department. It can also be used with profit in the Senior Department where the Fourth Grade Intermediate has not taken it. We have two classes of the Fourth Grade Intermediate reporting this work. Miss Elizabeth Garnett, of the Crescent Hill Baptist Church, Louisville, is using it with a class of sixteen-year-olds, with splendid success.

The Foreign Mission Journal, Home Field and Kentucky Mission Monthly, all for 60c.

... WOMEN'S DEPARTMENT ...

Central Committee.

Miss E. S. BroadusChairman
1227 Third Avenue.
Mrs. B. A. ReesTreasurer
2326 Longest Avenue.
Nona Lee DoverSecretary
Box 396.

PRAY FOR FOREIGN MISSIONS.

Our Boards are in great distress over the small receipts, as compared with increased need of money. Making their plans in accordance with the instructions of the Southern Baptist Convention in May, the churches and societies have failed to send on the contributions necessary for paying the missionaries. The Foreign Board sees a great debt piling up, not through their fault. It is you and I, reader, who have not done what we might. Have you given all you possibly can. Then pray mightily for more people to come into the ranks of the givers. There was recently a meeting in Richmond, Va., of the State Vice Presidents of the Foreign Board, Kentucky being represented by Dr. Cecil V. Cook, of Danville. These men have sent out an earnest request for prayer, designating the second Sunday in February as a special time, or else the next Sunday. It is true that we should pray without ceasing, and every day remember the cause of missions in our petitions. But Jesus had special sessions of prayer, and is he not an example in this as in all things? We beg the women of Kentucky, whether members of W. M. U. or not, to lift up their hearts to God in fervent prayers for our Foreign Mission Board and our missionaries. If prayers are followed by alms, that will be well pleasing to our Lord, as many Scriptures show. Our Christmas offering is only half what it was last year. Let delayed contributions for this fund come in as soon as possible, for in March we must give to the special Home Mission collections.

The Foreign Mission Journal, Home Field and Kentucky Mission Monthly, all for 60c.

OUR GREAT LOSS.

Miss Edith Campbell Crane has been compelled, by ill health, to resigned her office of Corresponding Secretary of Woman's Missionary Union, to our great sorrow and regret. "An ideal Secretary" she has been called, and Kentuckians have had occasion to know well how truly. Pray that we may be divinely guided in choosing her successor at our meeting in May, in Oklahoma City. The work is being carried on by the Assistant Corresponding Secretary, Miss Nancy Lee Swann, and the noble ladies of the Executive Committee in Baltimore.

MOUNTAIN SCHOOLS.

Those institutions are dear to our hearts, and we must expect frequent calls for help. A school or college that does not grow and, therefore, need repeated gifts, is like a child whose food and clothing cost no more at fifteen than at five.

Oneida now calls earnestly for contributions towards paying off some liability by the end of this term, which will leave them free of debt and incline other friends to give to the endowment. Six hundred students are being enrolled this year, and other hundreds would be there if there were room. That they are well taught, and are excellent students is proved by the fine standing at Georgetown of those who are enabled to carry on their education. Three of the four who stood highest last commencement at Georgetown were Oneida boys, and the other was from Williamsburg.

Mr. Burns longs to establish an industrial department at Oneida that will allow the very poorest people to send their children. The Central Committee will gladly receive gifts for this school and report them as given to mountain schools. Be sure and say it is for Oneida.

REPORT W. M. U.—THIRD QUARTER.

Foreign Missions—Apportioned, \$10,700:
paid in, \$5,251.80; due, \$5,448.20.

Home Missions—Apportioned, \$6,300:
paid in, \$1,422.27; due, \$4,877.73.

Sunday School Board—Apportioned

\$100; paid in, \$45.62; due, \$54.38.

Enlargement—Apportioned, \$600; paid in, \$351.94; due, \$248.06.

T. S. Expenses—Apportioned, \$415; paid in, \$212.54; due, 202.46.

Margaret Home—Apportioned, \$100; paid in, \$94.66; due, \$5.34.

Colored Worker—Apportioned, \$100; paid in, \$48.16; due, \$51.84.

In November Dr. Powell asked the W. M. U. of Kentucky for \$3,500 on State Missions. We have given \$176.32. The Christmas Offering was \$966.65. The Jubilee Offering was \$946.80.

EXPENSE FUND.

The four per cent we were authorized to retain from missionary contributions is proving not sufficient for our growing expenses, and we appeal to the society for help. A few have sent in special contributions, but others might do so if they knew of the pressing need. So many break down in the effort to do more than human nature will allow, and so many opportunities for better advertising and extending our work have to be slighted for want of a little money. At our next annual meeting an application will have to be made for a larger per cent to be retained, unless so much is sent in that four per cent will meet the demands. The Executive Committee in Baltimore have been investigating the subject, their own expenditures being four and one-half per cent of all monies reported to them. The Northern Baptist women spend eleven per cent, and no others so little as we. The Southern Methodists, who give much more than we do, say "a small percentage for administrations is not always a wise arrangement."

We have never subtracted any from Training School receipts, because rarely quite coming up to our apportionment, and the same is true of other special funds. Of course, where a salary is paid, that must go undiminished.

LETTERS FROM MISSIONARIES.

The Executive Committee will hereafter publish such letters in "Our Mission Fields" and the Baptist papers throughout the

South, as well as in the Foreign Mission Journal and the Home Field.

Any society or individual desiring a more complete report of a letter than may have been given for publication, can obtain it by sending five cents for postage and copying, to 15 West Franklin, Baltimore, Md.

Y. W. A. is soon to have a new publication, with a broader constitution to suit the growth of the organization. Mrs. J. P. Creal will be glad to correspond with any young woman in Kentucky who will join this noble band. Her address is 1445 Beech street, Louisville, Ky.

Miss Warren is much encouraged over Sunbeam work, so much interest is shown by the letters she receives.

How about our boys? A few are doing finely in their Royal Ambassador chapters, but Mrs. Schloss wants many more boys to write to her for instructions. She lives at 59 Fifteenth street, Newport.

Thanks to Pastor Plemmons, of First church, Covington, for successful efforts in our behalf. The pastors are our best helpers, and many of them say the same thing of Woman's Mission Societies.

College Correspondence is a new branch of our work, which opens up many interesting possibilities. Miss Susan Bancroft Taylor, of Baltimore, is the General College Correspondent, and some of her plans are given below:

For carrying out the work of the College Correspondent a program and working policy have been drawn up. The Aim of the work is to win for definite service in missionary work every Baptist young woman in the colleges of the South. The Field consists in the colleges and schools in the States of the Southern Baptist Convention. These colleges represent five groups:

- 1.—Colleges and schools under Baptist control.
 - (a) Strictly denominational institutions.
 - (b) Institutions under Baptist influence.
- 2.—State schools, normals and colleges.
- 3.—Private or endowed institutions.
- 4.—Colleges and schools of other denominations.
- 5.—Technical schools, not included above, as, nurse training schools.

To carry out the Aim of the work, the

general and State College Correspondents are to co-operate with the Young Women's Christian Association or the already existing student religious organizations in the colleges. The State College Correspondent is to keep in touch with a student representative for the W. M. U. interests among the young women of her institution; to enable the student representative to supply to the Mission Study Classes of the institution such literature of the denominational work as shall supplement the text books used, and to send information concerning Baptist young women who are leaving school or college to the Y. W. A.'s or to the Woman's Missionary Societies of the churches to which they go, with a view of insuring for them a cordial welcome and a share in the work. A program and a working policy have been arranged for the General and State Correspondents, and also for the student representative. A number of the States have appointed College Correspondents; other States are waiting until the November meeting before filling the office. Helpful suggestions have been received from the College Correspondents of other denominations which are working along these same lines.

E. S. B.

STATE WORK AMONG THE PEOPLE OF OTHER TONGUES.

The State Board is doing some good work in Kentucky among people of other tongues. Rev. W. W. Argow has been out and sees signs of hopefulness in some work which he has been doing for us.

Some tracts have been distributed among our Italian friends, but we find that they do not congregate in one district as they do in New York and other cities, and it is more difficult to reach them.

HONOR ROLL OF ASSOCIATIONS.

East Lynn, North Bend, Owen County.

Every church in the above Associations made contributions to missions during 1911. Only fifty-one Associations have sent in their minutes for the conventional year.

"We never saw so much improvement in one issue of any paper as was manifest in the last issue of the Kentucky Mission Monthly. It is now a compendium of interesting and valuable information about our State work. Every Baptist in Kentucky ought to take it."—News and Truths, H. B. Taylor, editor.

JANUARY RECEIPTS.

Barren River Ass'n—T. F. G., \$11.60.

Bethel Ass'n—H. H. A., Tr., \$393.74.

Book Sales—L. E., \$48.20; S. J. S., \$12; D. K. S., \$3; G. E. H., \$7.25; M. E. D., \$3; H. B. T., \$3.64; F. H., \$3.45; Mrs. T. H. C., 30c; W. E. B., \$16.05; S. M. McC., 86c; Mrs. M. O., 25c; Mrs. E. M. J., 25c; W. E. B., \$4.20; C. M. W., \$3.75; Miss F. F., 60c; Miss D., 39c; M. M. McF., \$6.33.

Central Ass'n—Lebanon ch., J. O. B., \$61.25.

Campbell Co. Ass'n—Mentor S. S., C. E. B., \$9.30; Newport S. S., Miss W., \$1; First ch., Newport, R. E. K., \$50.

Daviess Co. Ass'n—Mt. Liberty ch., W. H. R., Tr., \$12.50; Oak Grove ch., W. H. R., Tr., \$2.22; South Hampton ch., W. H. R., Tr., \$3.36; Calhoun B. Y. P. U., W. H. R., Tr., \$6.76; First ch., Owensboro, J. B. B., Tr., \$20.50; Third ch., Owensboro, J. P. J., \$23.

East Lynn Ass'n—Corinth ch., Miss N. M., 5; Good Hope ch., J. T. M., \$9; Mt. Carmel ch., J. T. M., \$2.

Elkhorn Ass'n—Porter Memorial ch., M. T., Tr., \$6; Clover Bottom ch., M. T., Tr., \$2.50; Hillsboro ch., M. T., Tr., \$14.75; Fifth

DAY OLD CHICKS—DON'T BUY EGGS

Get our prices on Healthy Thoroughbred Baby Chicks of standard breeds. We have doubled our capacity this season and have already booked many orders.

Write for prices & guarantee Crestmore Poultry Yards, Box. 4 Crescent Hill, Louisville, Ky.

❁ PUBLICATIONS ❁

OF THE

Kentucky Baptist

Historical Society

No. 2

Edited by

W. J. McGLOTHLIN, D.D.

- I. The Revival of 1800-1. By Rev. O. Olin Green, Author of "Normal Evangelism."
 - II. The Laying on of Hands—A Forgotten Chapter in Baptist History. By W. J. McGlothlin, D.D., Louisville, Ky.
 - III. Some Kentucky Baptist Confessions of Faith.
-

Only a small number printed. First come first served. You had better order now to be sure of getting this valuable work.

Price 50c, postpaid.

Baptist Book Concern
INCORPORATED

636-638 Fourth Ave.

Louisville, Ky.

St., Lexington, M. T., Tr., \$60; Mt. Pleasant, M. T., Tr., \$27; Calvary ch., Lexington, M. T., Tr., \$32.50; Versailles, M. T., Tr., \$191; Glens Creek, M. T., Tr., \$14.85; David's Fork, M. T., Tr., \$58.25; Cane Run, M. T., Tr., \$1.50; First ch., Lexington, M. T., Tr., \$110; First ch., Lexington, Dr. J. W. P., \$20.

Franklin Ass'n—First ch., Frankfort, J. W. H., Tr., \$120.

Greenup Ass'n—Barrett's Creek ch., Z. J. A., \$7.45; Willard S. S., Miss E. S., 43c.

Goshen Ass'n—Caneville ch., W. B. M., \$25.

Graves Co. Ass'n—Mayfield ch., W. M. W., \$136.91.

Individuals—F. D. D., \$5; Dividend, \$50; Rents, \$16.

Foreign Mission Board, \$100.

Journals—Mrs. J. M. H., 60c; J. L. A., 60c; E. H. G., 60c; Z. P. H., \$3.60; Mrs. W. C. T., \$1.20; Miss D., 60c; Mrs. H. S. G., 60c; Miss E. B., 60c; Mrs. S. M., 60c; Mrs. M. M. T., 60c; Mrs. B. M., 60c; Miss M. M., 60c; Mrs. J. M. C., 85c; H. B. T., 60c; T. C. E., \$4.20; Miss L. P., 60c; Mrs. J. S., \$1.20; Mrs. L. D. F., 60c; Miss A. H., \$2.30; Mrs. A. L., 25c; Mrs. A. S. N., \$6.50; B. F. H., \$1.20; Dr. F. M. C., 60c; Mrs. M. E. K., \$4.20; Mrs. S. M. K., \$5.65; L. F. C., \$1; M. P. C., 25c; Mrs. S. M. K., 10c; L. T. W., 25c; Miss Mattie Beard, \$5.05; Mrs. E. B. English, 60c; Miss C. M., \$1; Mrs. G. F. R., \$4.20; Mrs. H. D. J., \$1.60; F. P. G., 25c; Miss A. D., 60c.

Long Run Ass'n—Beechland S. S., E. J. B., \$6.50; Ninth and O Sts. ch., B. S., 50c; Twenty-second and Walnut ch., L. M. R., \$82.40; Parkland ch., L. M. R., \$83.10; First German ch., Wm. A., \$11; Oakdale ch., F. F. Tr., \$13.97; Immanuel ch., R. G. F., \$51.46; Highland Park ch., W. E. M., \$6.27; Fourth Ave. ch., O. W. Mc., \$105.24; W. M. U., Mrs. J. H. L., \$13; Calvary ch., W. H. J., \$25.10; Deer Park ch., J. J. F., \$5.00; Broadway ch., T. J. H., \$100; East Meade ch., W. L. S., \$12; 18th St ch., J. P. J., \$22.50; Immanuel ch., Dr. R. G. F., \$36.77.

Nelson Ass'n—Beech Grove ch., W. H. M., \$2.50.

Ohio Co. Ass'n—Hartford W. M. S., Mrs. A. E. E., \$3.

Salem Ass'n—H. C. H., Tr., \$115.20.

Severn's Valley Ass'n—Big Spring ch., J. P. J., \$10; M. H. G., Tr., \$209.40.

South District Ass'n—Danville ch., E. W. C., Tr., \$25.50.

Shelby Co. Ass'n—Little Mt. ch., J. T. M., \$38.52; Dover ch., J. T. M., \$5.85.

Sulphur Fork Ass'n—J. S. W., \$2.

Three Forks Ass'n—Jackson ch., S. P. M., \$14.

Warren Ass'n—First ch., Bowling Green, B. P. E., \$11.65.

West Union Ass'n—First ch., Paducah, W. W. R., \$50; Blandville S. S., R. R., \$3.57; Harmony ch., C. C. B., \$10; Blandville ch., E. R. R., \$2.50.

White's Run Ass'n—Cove Hill ch., G. F. B., \$12.25; Cove Hill S. S., G. F. B., \$1.70.

The Southern Baptist Theological Seminary

LOUISVILLE, KENTUCKY.

Next session of eight months opens October 1st. Excellent equipment; able and progressive faculty; wide range of theological study. If help is needed to pay board, write to Mr. B. Pressly Smith, Treasurer of Students' Fund.

For Catalogue or other information, write to

E. Y. MULLINS, President.

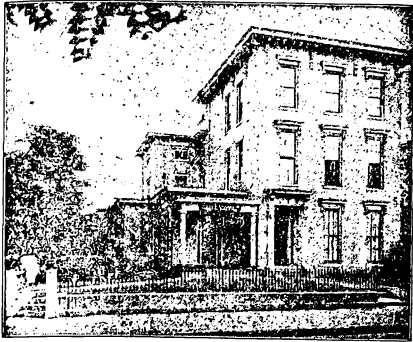


Liberty College FOR YOUNG LADIES
ESTD. 1874

A SELECT AND HIGH GRADE SCHOOL

Modern equipment. Laboratories. Steam heat. Libraries. Gymnasium. Delightful climate. School opens Sept. 14th. Send for catalog.
R. E. HATTON, Ph.D., President. REV. G. M. BUSH, A. M., Associate Pres-
GLASGOW, KENTUCKY.

A CHAPEL FOR PATRONS



LEE E. CRALLE

Funeral Director

S. W. Cor. 6th and Chestnut Sts.
Telephone Main 430

LOUISVILLE, - KENTUCKY

MOLL & CO.

Incorporated

Printers, Binders

Publishers

638 Fourth Ave. Louisville, Ky.

Home Phone 351 Correspondence Solicited

BLUM ART GLASS CO.

INCORPORATED

Maker of Church Windows

640 Third St. Louisville, Ky.

“ANITA”

AMERICAN LIGHTEST WATER

Always Pure, Fresh & Invigorating



THE BEST COOLER ON THE MARKET

Anita Spring Water Co.

INCORPORATED

PHONES { Home 4520
Cumb. M. 1468-A

**Our New Plant, 210-212 Pearl St.
LOUISVILLE, KY.**

---WE ARE---

MANUFACTURERS OF

MONUMENTS

Of High Class, But Moderate Prices

Peter-Burghard Stone Co.

SALESROOM

317 W. Jefferson St.

PLANT

13-14 Maple St. Louisville, Ky.



If you have never visited this beautiful, tropical place of pleasure you have missed a *lot* that only *its* location can offer. Here in the midst of winter, you find all the joys of summer at their best; and weather that "seems too good to be true". With its magnificent hotels, its sports and brilliant social life, San Antonio is admitted to be the *very ideal* of winter resorts—you will be *glad* that you came *this* winter.

The Katy Limited

The Katy Flyer

—these are the *recognized* trains for winter tourist travel to the resorts of Texas; providing fast through daily service from St. Louis and Kansas City, via *Katy all the way*. The equipment is *complete* with all the *latest* luxuries of travel—sleepers with individual berth lights, dental lavatories, bigger toilet rooms—chair cars, *extra* roomy and cozy; and dining service that *doubles* the pleasure of the trip. 311

I should like to send you our splendid new books on the winter resorts of Texas; tell you cost of long-limit, low fare tickets and make up a *complete* schedule from your city. Write today.



W. S. St. GEORGE, Gen. Pass. Agent.
1359 Wainright Bldg. St. Louis, Mo.]

THE HENDERSON

... ROUTE ...

L. H. & ST. L. RY.

A Kentucky Road

For Kentuckians

Thru Kentucky

TO

OKLAHOMA

AND ALL POINTS

WEST

For Rates or Further Information,
Address

E. M. WOMACK,
City Pass. Agt.

R. F. PENN,
Trav. Pass. Agt.

S. W. Cor. 4th & Main

LOUISVILLE,

KENTUCKY