

VOL. XI

NO. 5

SEPTEMBER 1911

 KENTUCKY 
Mission Monthly

Pastors, Superintendents, Teachers

REMEMBER

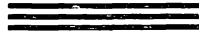
State Mission Sunday School Rally

Day, Sept. 17, 1911.



The Foreign, Home and Kentucky Mission Monthly Journals all for 60 cents

The NEW EVANGEL



Has been adopted by the
General Evangelist,
Dr. Weston Bruner, of the Home
Mission Board

because of the merits of the
book. It contains a choice
lot of

TODAY'S POPULAR FAVORITES
Select Invitation and Decision Songs
STANDARD OLD HYMNS

Pastor M. E. Dodd, of 22nd and Walnut St.
Church of this city, says: "It is the best
book I ever examined."



PRICES: Full Cloth Board, 35c each, postpaid. \$3.50 per doz., carriage
extra. \$25.00 per 100, carriage extra. Embossed Limp, 25c each,
postpaid. \$2.25 per doz., carriage extra. \$15.00 per 100, carriage
extra.

SEND ALL ORDERS TO

Baptist Book Concern

INCORPORATED.

636-638 Fourth Ave.

LOUISVILLE, KY.

The Kentucky Mission Monthly

"LET HIM THAT HEARETH SAY COME"

VOL. XI.

SEPTEMBER, 1911

No. 5.

STATE MISSION FACTS THAT BURN.

We face serious facts. To see things as they are should neither discourage us nor offend us. The work of the State Board needs prayer, sympathy and financial help. We are trying to do the work which God has given us. We try to solve the problem of the Sunday School in showing how to hold the young men, how to secure competent teachers, how to increase the attendance and the efficiency of the school.

We disseminate through our faithful colporters thousands of Bibles and denominational books that will cause our people to adhere to our distinctive principles and continue to grow and prosper through the ages. We care for the weak churches and help them to greater usefulness, we help country churches to be more useful to the community and how to reach the Catholics and Lutherans.

Our financial problems face us all the year.

The great work for which we exist is to save souls, baptize them, organize them into churches and see that they are properly housed and teach them to observe the whole gospel teaching. We can not have spiritual life and power unless we see to it that our churches are composed of converted members. The church at Jerusalem demanded proof of conversion of Saul of Tarsus before they would receive him. When we live the Christ life we "put to silence the ignorance of foolish men." The influence of a godly life is irresistible. Our State workers are as godly as Carey of whom it was said, "His business is saving souls; he cobbles shoes to pay expenses," and as patriotic as John Knox, who said, "Give me Scotland or I die." So they feel about Kentucky.

We will have a gratifying report at the end of our fiscal year of conversions, bap-

tisms, churches and Sunday Schools organized, literature distributed and church houses built at needy points. Pastors must preach about our State work and pray for it. It is in earnest prayer that our work be laid upon the hearts of God's people and the means will be forthcoming with which to sustain it. We are making good progress in securing funds for our work, but we are far from the goal. Some of our churches have done well, but so far the great body of them have done nothing.

Last year our workers reported 3,685 conversions, 2,873 baptisms and 32 churches and 77 Sunday Schools were organized. We raised for all purposes \$160,547.29.

We must have \$15,000 for State Missions, \$7,000 for Sunday School and Colportage work, and \$8,000 for Church Building by October 31st.

What are you willing to do to help us secure this amount? Some must give large sums, but each one according to his ability must contribute. The crying needs of the field demand of us, our great wealth presses us, the little we have done shames us, and the Lord God expects us, to make a decided advance in our giving at this critical period. A large church that has given a large amount to our State Mission work the present year is a Presbyterian church. They know that the \$125 which they give each quarter goes to support a Baptist worker to do Baptist work.

The friends are beginning to respond to our urgent appeals for funds to liquidate our indebtedness on State Missions, Church Building and Sunday School and Colportage. It must borne in mind that to raise this sum of \$30,000 requires earnest effort and large giving, but united effort on the part of pastors and churches will bring a mighty victory. Indifference and neglect would cause us to go down in defeat.

KENTUCKY MISSION MONTHLY.

Published Monthly at 205 E. Chestnut St.,
Louisville, Ky.

W. D. Powell Editor
A. E. Wohlbold Bus. Mgr.

PRICE 25 CENTS PER YEAR.

Entered Feb. 5, 1903, at Louisville, Ky., as
Second-class matter, under act of Con-
gress March 6, 1879.

THE STATE BOARD OF MISSIONS.

Meets Tuesday, Sept. 5, at 10 a. m.

J. D. COLEMAN Chairman
R. E. REED Recording Secretary
J. F. GRIFFITH Asst. Rec. Sec'y
THOS. D. OSBORNE Treasurer
W. D. POWELL .. Corresponding Secretary

WHY A CHURCH BUILDING FUND?

To enable weak and struggling churches to secure suitable meeting houses, properly located. Otherwise a few churches would get the lion's share of the gifts of the churches and the others would receive nothing. We gather in gifts from the churches and then a judicious committee considers the claims of each field and we appropriate such an amount as we feel the case demands and our means will permit. Some times applicants have very little regard for other needy points but would have us consume the gifts of all the brethren on one place, but that is not often. Sometimes churches assume a mandatory spirit toward the Board and almost demand a stipulated amount. This fund is doing as much or more good than any fund we handle in this office.

Giving aid has to be wisely administered or it will make churches defective, dependent and delinquent. We must help people to help themselves. A little medicine acts as a stimulant while too much is a sedative. We are this year planting 104 meeting houses at needy points. This is a glorious work and should cheer the heart of every Baptist in the State.

CALVARY CHURCH, LOUISVILLE.

This was formerly Southgate church. Some six years ago a Seminary student was pastor. They wanted a new house of worship. The Church Extension Board of Louisville was appealed to and promised that if they would build a house not to cost over twelve thousand dollars that the Church Extension would give so many thousand. The pastor and two other members seem to have been the building committee, and neither the church nor the Extension Board paid much attention to what was being done and soon it was found that the house had cost almost double what should have been paid and the money raised and given was paid out and a debt of nearly as much as the house was to have cost was resting upon it. The pastor and the other two members of the building committee left town. A number of members withdrew and joined other churches.

Since then matters have been in a bad way. The church membership is composed of working people, but few or whom own their homes. The State Board seeing the chaotic state of affairs have been aiding in the pastor's salary and paying one-third of the interest, while the Home Board and the Church Extension have paid the other two-thirds, leaving the church to try to reduce the debt. The Church Extension has paid some on the debt and the church has paid some.

There are two mortgages, one to the Fidelity Trust Company and one to The Alfred Struck Company. The latter is for more than \$2,000. The company agrees to give us part of the debt and a member of the firm will give us \$200 towards raising the amount. The church can pay a few hundred dollars and if a few friends will help us in this matter, without decreasing their gifts to our regular church building fund, we will retire this indebtedness. But our brethren must remember that we must have \$8,000 to meet our obligations to a hundred other church building enterprises in the State. We must discharge our duty to each worthy cause in every part of the Common-

**Remember State Mission Rally Day, Sunday Sept. 17th in
your Sunday School Brother Superintendent.**

wealth.

As to the remaining debt it is proposed that the Home Board will pay \$1,500 and the Church Extension \$2,500, leaving Calvary only some fifteen hundred dollars to provide for. It has looked at times as if this property would be sold under the hammer.

Pastors, believe us that the day has come when we must have large amounts to settle our bills in bank, where we borrowed the funds to make the last payment on each church constructed at some needy point. We have secured large results with the amounts we have given. Not a house built has cost less than \$1,000 and some have cost ten thousand or more. The value of the houses we have helped to build this year is at least \$120,000. The Lord be praised for the splendid progress we are making in taking Kentucky for Christ and the Baptists. Help us.

THE KENTUCKY BOY.

By all means place him in one of our denominational schools. If you will peruse our advertisements you will see that Georgetown, Bethel and Clinton are very anxious to develop him for a life of usefulness and Christian service. Bethel Female College, Liberty, as well as Georgetown and Clinton, long to have the training of our daughters that they may make them as polished corner stones. They are all worthy of our confidence. They promise to look after the morals of each pupil entrusted to them.

Pastors should seek diligently to impart information to their congregations regarding the different phases of our State work. Information will enlist their cooperation in meeting the financial obligations now resting upon us. Press the claims of Sunday School and Colportage work, State Missions and our Church Edifice Fund. Each of these funds have been largely overdrawn and the sums needed for this work must be raised during September and October. We have never failed to pay in full for State mission work, to do so this year would be to place us in the same category with our Foreign Board. This would call

for retrenchment and the effect would be disastrous.

Each Baptist family in Kentucky needs the Kentucky Mission Monthly, Our Home Field and The Foreign Mission Journal. These journals give you information which can not be obtained elsewhere. They cost only 60 cents a year. Subscribe for them and read them. Our workers could easily enlarge our list if they would. Some do nobly, others simply neglect it and much is lost.

Our workers will please send us tidings from their fields. Fresh, crisp mission items which have not been published elsewhere. Help us to have the best State Mission Monthly extant.

Churches desiring assistance from the State Board during the next Associational year should send to this office for application blanks and return them before the close of September. If the Board has been aiding you, of course, you will not ask for as much as we gave you this year, if you ask for any aid whatever. Many churches which we have long aided must become self-supporting.

Our readers should make note of all our advertisers. Patronize them and do not fail to mention the Mission Monthly when writing to them.

Send funds for the Ministers' Aid Society to Dr. J. D. Maddox Owensboro, Ky. Send funds for Hope Rescue Mission to W. M. Bruce, Louisville, Ky.

Our Associations are starting off well. It is an occasion when much good can be accomplished and the interests of Christ's Kingdom promoted. The time should not be wasted in disputations over trivial matters. Deep spirituality should characterize every session of the body. Do not waste too much time in organization. District, State, Home and Foreign Missions are the great themes to be considered. Education, Sunday Schools, Ministers' Aid, Orphanage and Ministerial Education and denominational literature should have due consideration.

THIS ONE THING WILL I DO.

During the months of September and October this one thing will I do—I will make an offering to Kentucky State Missions. Do this and God will reward you.

Many leading pastors and superintendents have not made note of our request that September 17th be made Sunday School Rally Day, and that a liberal collection be taken to support the Sunday School department of our State work. We must have \$7,000. Each leading school must give us \$100, and other schools smaller amounts.

The General Association meets in Paducah on November 15th. Each Association as well as each church should prepare and send messengers. Pastor, make your arrangements to go and to stay to the close. Take a good delegation from your church.

Our denominational objective in Kentucky is to increase the efficiency of each local church. Pastor and deacons will see that each member has a task to perform, a work to do. Let every member join the Sunday School and contribute weekly to current expenses and missions. What definite thing has your church accomplished the past year? Reduce your number of non-resident members.

Rev. A. A. Adkins has spent much time this month in working on two new churches, one at Carter City and the other at Truett. He hopes to have them finished ere long. A missionary has to be a many-sided man. Bro. Adkins hopes to hold a meeting in Morgan county soon.

We are confidently looking to our W. M. U.'s to do liberal things for State Missions and Church Building, as well as to help support our Sunday School and Colportage work. We call on every W. M. U. and Y. W. A. to rally to our help from now until October 31st. Our women are loyal Kentuckians and believe that their own sons should be saved as well as those in other States and countries.

THE RELIGIOUS DAY SCHOOL.

This work in some sections has passed the experimental stage and the results have been glorious. It has not been tried in Kentucky, but we wish to see several next summer. The best teachers possible are obtained and each day for three hours the children are taught the Bible, missions, doctrine, church history, the memorizing of standard hymns and the richest passages of Scripture. The school is graded with the utmost care. The school is made so attractive that the children can not be kept away. Each class has four lines of work, the Bible holding the central place. It is distressing how little the average person knows about missions and the Bible. An intelligent knowledge of missions and the Scriptures always leads to enthusiastic giving to missions. It is more than a school of instruction, as many are lead to Christ.

"Will it work?" Yes it does the work. It is no longer a theory; it has been tried out and becomes a fact. It lasts from one to four weeks. Who will under take the work next summer, during those months when the children are idle? The child needs religious nurture as the rose needs the sunlight. The work is founded upon the principles of modern psychology and pedagogy.

Make Sunday School Rally Day, September 17th a success. We will publish a Roll of Honor of all who contribute on that date to support our Sunday School and Colportage work.

SMILE IT DOWN.

"Every one who loves you,
Loves to see you smile,
Loves to see you cheerful
And happy all the while.

Smiling comes so easy!
Do not wear a frown.
If you feel one rising,
Always smile it down."

The Baptists in the United States gave \$4.91 per member. How much did your church average?

Remember State Missions Sunday Sept. 17th in your Sunday School, Brother Pastor.

STATE MISSION BREVITIES.

Missionary Howerton will undertake to secure a house of worship at Birmingham, Ky. We trust that he will be successful.

Missionary L. H. Gardner is now in a meeting at Four Mile.

Lewis Lyttle reports five baptisms this month. He is supported by Murray church.

L. H. Gardner reports for the month two received by baptism, two by letter and two restored.

A. S. Petrey reports eight received by baptism.

W. S. Shipp reports one received by letter.

F. R. Walters reports eighteen baptisms, two by letter and one restored.

Z. J. Amerson reports one baptism during the month of August.

C. T. Brookshire reports thirty baptisms. He is located in Breathitt county.

James L. Dotson, working in Pulaski county, reports fifty-eight sermons, forty-two professions and thirty-nine baptisms. He is a good hand at stringing fish. He has a hard field. Instead of telling us of his problems he solves them. He does not shun hard work nor have fears of nervous prostration.

Bro. Toomer, Salyersville, reports four by letter.

J. K. Smith, Harlan, reports two baptisms.

E. L. Howerton reports twenty-four conversions and twenty-one baptisms.

Thomas Murrell, Clay county, reports one baptism.

J. P. Jenkins reports twenty conversions and twenty baptisms. That is the way.

C. B. Althoff reports one baptism.

A. A. Adkins reports two baptisms and one restored.

James A. Clark, city, reports three baptisms.

A. F. Gordon reports one conversion for the month.

W. P. Wilks reports three by letter.

H. W. McCormack reports five by baptism and seven by letter.

Rev. C. J. Roberts resigns as missionary. His headquarters have been Morehead.

Many new houses of worship are being built by Baptist churches in Kentucky besides those aided by the State Board.

We appeal to the Royal Ambassadors to send us \$100 for our Church Building Fund. We are accomplishing a great work with this fund.

J. G. Parsons reports one by letter and one by restoration.

T. F. Grider reports for the month sixty conversions, fifty-five baptisms. Glorious!

Sam P. Martin reports nine by letter, thirteen conversions, and thirteen baptisms. Well done!

T. C. Duke reports two baptisms.

E. J. Weller reports four by letter.

Miss Bullock has done a fine work in Middlesboro as city missionary. The pastor and church are charmed with her labors. She has tempting offers to accept work in her native State, Mississippi. We do not wonder that they would covet such a faithful and conscientious worker.

Many workers report no conversions, no baptisms, no accessions. Brethren, this is harvest time and you must appreciate the responsibility of your position as a soul winner. The eye of God rests upon you. Many show no disposition to aid us in gathering in funds with which to carry on the work. Brother, if you expect to continue with us you must show yourself a willing worker and one ready to endure hardness for the Master's sake. The time is brief. Let us be up and doing. Teach the people to give to missions. Give yourself.

We are making an earnest endeavor to reach forty-two of the seventy-six Associations in Kentucky. The Moderators are very considerate in allowing us to speak on the great theme of Missions, so as to adjust our movements to the reaching of other Associations the same week. The Secretary knows how to appreciate all favors shown.

Our list of subscribers grows encouragingly. Our women give us royal aid. Will you help?

SUNDAY SCHOOL DEPT.

Louis Entzminger, Editor

BOOKS.

The Pupil and the Teacher. The Geo. H. Doran Co., publishers, New York. Price 75 cents.

Some very helpful things are set forth in this volume by Prof. Luther A. Weigle, the author. The first division of the book is devoted to a study of the pupil; the second division to the teacher. Some very interesting chapters are "The Plan of the Lesson," "Method of Teaching," "The Pupil at Work." Of course, the principles of teaching are discussed and then one very interesting chapter, "The Class as a Social Institution," sets forth very clearly some very vital things. There will be some things in most books along this line that would not be endorsed by every one, but taken altogether this book will make a very valuable volume for the teacher's library.

* * *

Practical Sunday School Pedagogy.

Published by The Fleming H. Revell Co., of New York. Price 50 cents.

This is one of the best books on this subject we have ever read. J. H. McKeney is the author and he has produced no book worth more to the average Sunday School teacher.

* * *

The School of the Church.

Fleming H. Revell Co., New York. Price \$1.00.

This is by Dr. Frost and is a most timely volume. Every where among our Southern Baptists Dr. Frost is well known and much has already been said and splendidly said, too, about this book. We hope every Baptist Sunday School worker in the State will read this book.

* * *

It is our purpose in this column to call the attention of our workers to the best books on Sunday School work from time to time.

MONTICELLO.

One of the very best meetings we have ever conducted was held at Monticello. The meeting began on Monday night and con-

tinued through to Sunday night. The largest class up to that time the writer ever taught met with us for three hours a day for the entire time. Besides the class work done, a canvas of the town was made and the organization gotten up in good shape. Sunday morning the school was graded. Sunday evening a class of thirty received the Convention Normal Diploma, up to that time this was the largest class graduated from any one Baptist church in the South. It was composed of busy mothers and housekeepers, business men and strong young men and women. Dr. M. D. Early, one of the prominent men of our denomination and well up in years, once Secretary of State Missions in Arkansas and also in Texas, led his people in the work and stood at the head of the class. Bro. J. H. Shearer, who probably has more business on his hands than any other man in Wayne county, was at the other end of the class. Col. W. R. Cress, one of the most prominent lawyers in the county, was also with us and inspired the class and teacher. Several very prominent young business men did the work. It was a fine class, all around, and it was a great meeting, but it was so because a noble pastor had worked, planned and prayed to that end, and because a splendid people made sacrifices and put their hearts in it. They are a magnificent people. There will ever be a warm place in the writer's heart for Dr. Early and the people of the beautiful little city of Monticello.

BURNSIDE.

Here, too, was a splendid meeting. Bro. H. B. Kimbrough, the pastor, had worked incessantly and had not only his local people but several from the other churches to join in the work. Bro. Wilkinson, the superintendent, a very busy man, was already bubbling over with enthusiasm. Bro. Davidson, a man with a big business enterprise on his shoulders, joined the class and stuck to us in spite of his rush of business. Indeed, all of the folks who did the work, "just didn't have the time." But they did it. Bro. Sanderson, superintendent of a Sunday School on the other side of the river, left his farm and came not only for three hours a day for the whole week, but most

of the time at night. This class was the largest yet. Thirty-seven! All finished and got the diplomas. Several already had them. It was a great time we had at Burnside. Everybody fell in line and Supt. Wilkinson says that the Baptist Sunday School at Burnside must be an "A1" school. I certainly believe it will. If Wilkinson and Kimbrough can't do it—"it can't be did."

OUR TEACHER TRAINING WORK FOR AUGUST.

Our report for August is just great. One hundred and seventy-six diplomas. Three States turned down (Georgia, Alabama and Tennessee) and only three ahead of us. Don't that sound good. Let's make it better. Let every one taking the Manual try to finish as early as possible. We are working for 1,000 diplomas and 100 Blue Seals by November the first. Finish by then, sure. If not already taking it, order the Manual and enroll at once. Don't wait. Do the work individually. You can do it all right that way. Organize a class if possible.

WANTED, 5,000 KENTUCKY BAPTISTS to enroll in the Teacher Training work during September. Order the Manual and send us your name. Enroll! We want the name of every person who will take up the work. Let's head the list. Send us your name and get the Manual. If you have completed the Manual, enroll for another book. Be sure and send me your name if you are going to take up the work. This is IMPORTANT. We need the training and let's not put it off longer.

One of the greatest boosts our teacher training work has received in a long time was given us last Sunday morning when the Baraca Class of the Walnut Street Baptist church, Louisville, voted to take up the teacher training work. They will take up the Normal Manual right away and spend an hour a week on it. Isn't that great? Men of that kind! It's a glorious day when strong men of ability and prominence, men who are leaders in business affairs, a great class, like that decides to study the Sunday School work. Bro. Geo. E. Hays teaches this class. He planned it and the members of the class fell right in line. We want to show our readers the picture of this class

in the near future. We congratulate Dr. Porter and Supt. Tinsley. When men like that line up that way it means something great for the kingdom.

Only North Carolina, Mississippi and Texas are ahead of us in the number of Convention Normal Diplomas. We ought to be at the top. We received 176 diplomas in August. Can't we make it two hundred in September?

Kentucky has more Blue Seal diplomas than any other State in the Southern Baptist Convention, nearly twice as many as the next State. We have forty-nine Blue Seal diplomas. Other States are ahead of us in the number of Red Seal diplomas, though, and we will have to work to hold our place.

Below is our monthly Associational Report. Several Associations are on the list this month that have never been there before. They are well up on the list, too. How does your Association stand?

Number of Convention Normal Diplomas held by Associations:

North Bend, 121; Long Run, 113; Bell County, 63; Pulaski, 40; South District, 34; Wayne, 33; West Union, 28; Ohio County, 27; Elkhorn, 27; Campbell County, 27; West Kentucky, 22; Little River, 22; Crittenden, 22; Tate's Creek, 21; Ohio River, 17; Ohio alley, 17; Boone's Creek, 13; Da-Goshen, 7; Severn's Valley, 6; Nelson, 9; Goshen, 7; Seevrn's Valley, 6; White's Run, 5; Concord, 5; Enterprise, 4; Bethel, 2; Bracken, 2; Blood River, 2; Central, 2; Warren, 1; Russell's Crek, 1; Laurel River, 1; Three Forks, 1; Gasper River, 1; North Concord, 1; Freedom, 1.

Missionary L. H. Gardner has held meetings at Pineville and Tinsley, where much good has been accomplished. He is now holding a meeting in a mining camp where there are between a thousand or twelve hundred people, and he says that he doubts if there are ten Christians in the entire camp. There certainly is great spiritual dearth in many portions of Bell county. The State Board has a task which will not be finished for many years to come.

KENTUCKY CENTRAL COMMITTEE.

ChairmanMiss E. S. Broadus
 1227 Third Avenue.
 Sec'y and Treas.Miss Willie Lamb
 Box 396.

STATE MISSIONS.

September is the month in which we make a special effort for the support of missionaries and the building of churches in our own State. Last year we gave \$800 in response to a special appeal from Dr. Powell, and no less must be our offering this year. At the General Association last november we pledged "at least \$1,500 dollars" to State Missions for the year. Very little more than \$1,000 has been given, and we only have September and October in which to redeem our pledge. In order to come up to last year, we should give \$900 in these two months.

FALLING BEHIND.

Kentucky is down to seventh in the list of States contributing to Foreign Missions, and in our report to the W. M. U. for the first quarter we are sixth in total contributions, Tennessee being \$60 ahead of us. Even for the Training School Georgia, Virginia and South Carolina have given far more than we. Are we satisfied with this position? True, we are only sixth in number of churches, but third in number of members. Information is what our people need. More subscribers to mission periodicals, and closer reading of them, more mission study classes, more conversation about the victories of the cross with those who will not read, more missionary sermons, more and better missionary prayer meetings. The September number of the Foreign Mission Journal and Our Home Field are brim full of interest. Oh, for many more readers!

FIELD WORK.

Miss Dover has made successful visits to Salem and Breckinridge Associations, and in September will work around Maysville,

Owensboro and Henderson, after a brief visit to Danville. She is helping Mr. Entzinger in Sunday School work, and at the same time looks after W. M. U. affairs wherever she goes, making sometimes two or even three talks a day. She says, oh, how I love the work! And the people she visits love her, sometimes following her up so as to hear her speak at different places, and after begging for visits that she has not time to make. Miss Dover is making excellent suggestions to the Central Committee for getting practical help into the hands of our women and children, of which you will hear more before long.

SOME ITEMS ABOUT MOUNTAIN SCHOOLS.

"Ex-Judge Gentry, of Spartanburg, recently visited Fruitland Institute, one of our mountain schools, with the view of placing his nephew in the school and reports that he has never felt such an atmosphere in a school. The high ideals of the teachers, their consecration to the real work of a school—making character—so impressed this godly man that he did not hesitate to place the boy with them, so he is rejoicing that after the lad has been there ten days he writes that he has accepted Jesus as his Saviour and wishes to devote his life to his service.

"Rev. W. A. Melton is principal.

"Miss Martha Sullinger is lady principal.

"The North Greenville Association, where the Home Board has had one of its mountain schools for six years, reported about \$450 for Home Mission. Six years ago was \$4.98. The contribution to other objects have correspondingly increased. This growth is attributed largely to the influence of the school and its teachers and our efficient associational vice-president, Bro. J. T. Henry."

A PREMIUM FOR TEN SUBSCRIBERS.

Why not secure a valuable premium and at the same time help to build up the circulation of the Kentucky Mission Monthly. We are dependent upon the friends of the paper to insure its success. The small price of twenty-five cents does not permit us to have a solicitor. Societies and Pastors, see that your church appoints some one to take subscriptions at once.

THE OCTOBER PLAN.

Edith Campbell Crane.

Would you like to see more women of your church active members of the Missionary Society, and more girls taking part in the Y. W. A.? Of course! There is a widespread desire of this kind among the missionary women of all denominations—a holy ambition to bring the great enterprise of the Lord Jesus into the first place in the lives of their fellow-Christians. And so a plan has been worked out by which simultaneously all over the country, the women's missionary organizations will push a special campaign for new members and magazine subscriptions, in the month of October.

Like all other plans it will result in any advance only if the local societies, the missionary women of all churches in the town, take up this thought and make a vigorous attack, all together, upon the inertia that we find in nearly all churches hindering this missionary vitality. There have been prepared leaflets dealing with the methods of conducting such a campaign, to be had from your State Corresponding Secretary for the asking, and membership cards, for both grown-ups and Sunbeams. There are dozens of good narrative leaflets for sale by our Literature Department in Baltimore, which for a few cents may be in hand for you to leave with some uniformed and reluctant sister. Will you make one of those

thousands of women who this fall will go out with their hearts aflame to touch and fire with the love of Christ, the other women whom he needs and we need, in the business of the King? Do not let one of our Societies in the W. M. U. fail to do its part in this great enlistment movement. Send today for the literature, if you have not already received it, and plan for October, a sincere, prayerful and worthy effort to visit every unenlisted woman in your church, with the faith that since the work is done for the Master's sake, he will own it and multiply its power. Let us remember that "Our sufficiency is from God," in this as in all other matters, and say to ourselves "my expectation is from him."

Some "Don'ts" for those who work in the Campaign—

Don't be negative: "You are not interested in missions, I know," is a bad beginning, when you call on a woman.

Don't fail to tell some of the beautiful things missions are accomplishing for women and little children.

Don't hurry the women you call upon to decide.

Don't go at the wrong time of day.

Don't stay too long.

Don't leave out the girls.

Don't depend on your wisdom and don't forget to take your Master with you.

Three Forks Association meets this year at Jackson, on September 30th. We hope to attend.

LOUISVILLE TRAINING SCHOOL

This is a thorough literary and military home school for **BOYS FROM 10 TO 20 YEARS OLD**. Industry,, economy, thoroughness, discipline, gentility are its watch-words. It trains head, hand, heart daily, in school room, gymnasium, dining-room, military field. **ONLY 50 BOYS TAKEN**. Prepares for life or best universities. **ITS CERTIFICATE ENTERS A BOY ANYWHERE**. Has prepared many leading men for past 22 years. Prices very reasonable. It takes day pupils as well as boarders. If you want our prices and catalogue, **WRITE AT ONCE**, or you may be too late. Boys were turned off last term. When writing give age and advancement of your boy. Our location in Louisville's prettiest suburb gives fresh air, all city advantages and none of its disadvantages. We open Sept. 12, 1911. Address

PROF. W. H. PRITCHETT, A.M., Headmaaster,
Home Phone 6620.

BEECHMONT, KY.

Take Fourth Ave. Car, marked Park via Third.

Tokens of Christian love are showered on us wherever we go. The Lord be praised for Kentucky Baptists. Let us not forget that our temporal blessings are from heaven. "Every good and every perfect gift cometh down from above, from the Father of Lights."

RECEIPTS FOR AUGUST.

Baptist Ass'n—Lawrenceburg ch., L. B., \$10.

Barren River Ass'n—R. H. S., \$163.58.

Bethel Ass'n—Sinking Fork ch., Dr. T. W. B., \$6.88; Dr. T. W. B., \$698.41.

Blood River Ass'n—H. B. T., \$23.13.

Book Sales—R. M. Taylor, \$15; S. J. Sheffield, \$22.50; Miss J. Warder, 50c; James Brickey, 30c; S. P. Stapp, \$20.25; J. T. Lewis, \$1.75; F. C. Markert, 55c; W. D. Powell, \$1.75; U. S. Shipp, \$15.36; W. S. Stapp, \$20.55; L. V. Vincent, \$10.10; R. M. Taylor, \$15; L. Vincent, \$19; H. B. Taylor, \$55.50; G. J. Davis, \$36; W. H. Williams, \$1.10; M. B. Carney, 25c; James Brickey, 34c.

Breckinridge Ass'n—Goshen ch., R. T. D., \$7.50.

Campbell Co Ass'n—Newport S. S. Class, Miss L. W., \$1; Persimmon Grove S. S., C. E. B., 70c; Flagg Spring S. S., C. E. B., \$3.49; Mentor ch., C. E. B., \$7.10; Mentor S. S., \$4.65; Mentor W. M. U., C. E. B., \$2; First 12-Mile ch., C. E. B., \$2.78; First 12-Mile S. S., C. E. B., \$1.50; Alexandria S. S., C. E. B., \$2.25; Dayton ch., C. E. B., \$45.17; Pleasant Ridge ch., C. E. B., \$17.31; Pleasant Ridge S. S., C. E. B., \$2.50; First ch., Newport, R. E. K., \$50; Grant's Lick ch., C. E. B., \$9.75; Second 12-Mile ch., C. E. B., \$22.25; Oaks Island ch., C. S. B., \$1; Licking Valley ch., C. E. B., \$10.75; Flagg Spring ch., C. E. B., \$6.75; Flagg Spring S. S., 42c.

Crittenden Ass'n—Gardnersville ch., F. E. Beigle, \$16.75.

Central Ass'n—J. O. B., Tr., \$203.34.

Central Committee—Miss Willie Lamb, Tr., \$180.96.

Church Extension Ass'n of Louisville, Ky., \$72.90.

Daviess Co. Ass'n—W. A., Tr., \$58.82.

East Lynn Ass'n—J. F. M., Tr., \$22.

Enterprise Ass'n—Inez ch., \$2; Z. J. Am-

erson, \$12; Mouth Card ch., \$3.30; Paintsville ch., J. P., \$50.

Elkhorn Ass'n—Porter Memorial ch., M. S., \$33; Fifth St. ch., Lexington, M. T. \$30; B. P. Smith, \$14.44; Hillsboro ch., M. T., \$10.10; Cane Run ch., M. T., \$11.75; Mrs. W. E. Baumister, \$10; Midway ch., M. T., \$5.50; Mt. Vernon ch., \$16; First ch., Lexington, M. T., \$32.75; Calvary, M. T., \$32.50; Sadieville ch., M. T., \$2.65.

Greenup Ass'n—Willard S. S., Miss E. St. C., \$1.12.

Home Mission Board, \$297.34.

Individual—S. A. Holcomb, \$25.

Journals—Rev. J. T. Lewis, \$6.60; Lee Cralle (adv.), \$12; W. S. Shipp, 60c; Dr. J. H. Calvert, \$5.40; E. J. Weller, \$1.20; Miss Mabel Ryland, \$2.40; F. B. Taylor, \$1.20; Clinton College (adv.), \$5; Miss Mary C. Ryan, 25c; W. D. Powell, \$4.65; Western Recorder, 85c; W. I. Powell, \$5.30; Z. J. Amerson, \$3.60; R. R. Noel, \$1.20; J. W. Bruner, \$1.70; H. E. Gabby, \$1.20; L. Vincent, 25c; W. D. Powell, \$3.85; J. M. Bruce, 85c; Mrs. O. M. Huey, \$3.55; R. R. Noel, 95c; A. N. Moore, \$1.35; Western Recorder, 60c R. L. Purdom, 60c; Louis Entzinger, \$2.50; C. E. Baker, \$1.20; L. & N. R. R., \$20.

Liberty Ass'n—J. L. B., Tr., \$34.96.

Little River Ass'n—C. M. W., Tr., \$100.

Logan Co. Ass'n—D. P. B., Tr., \$82.52.

Long Run Ass'n—Immanuel, R. G. F., \$59.49; Third Ave ch., L. M. R., \$26.16; Thirty-sixth and Grand ch., L. M. R., \$1.12; Beechland ch., E. J. B., \$2.54; Highland ch., T. C. H., \$25; Parkland ch., W. H. M., \$500; Walnut St. ch., L. M. R., \$300; East Meade W. L. S., \$9.31; Fourth Ave. ch., O. M. C., \$71.95; Little Flock, Mrs. J. R. H., \$14.50; Calvary ch., W. H. J., \$32.40; Chestnut St. ch., L. M. R., \$27.05; Twenty-second and Walnut St. ch., \$84.80; Walnut St. ch., C. H. McC., \$25; Broadway ch., T. J. H., \$108.33; West Broadway, S. P. M., \$70; Immanuel ch., Dr. R. G. F., \$40.93; Parkland ch., L. M. R., \$41.08; Kings ch., L. M. R., \$81; Oakdale ch., F. F., \$14.

Lynn Ass'n—B. T. Hutcherson, \$31.92.

Muhlenberg Co. Ass'n—Powderly ch., W. D. P., \$10.35; Bellview ch., W. D. P., \$25.50.

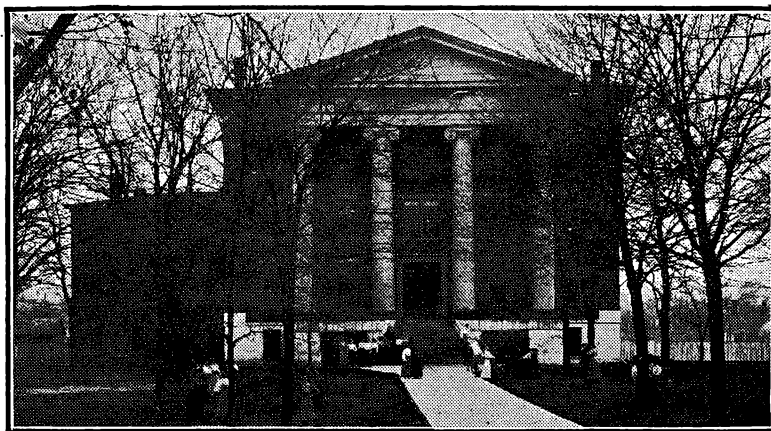
Nelson Ass'n—Little Union ch., J. L. B., \$15.

North Ben Ass'n—Southside ch., F. P. G., \$15; T. M. S., \$211.39.
 Oneida Ass'n—Oneida ch., J. H. W., \$10.
 Ohio Co. Ass'n—W. M. F., Tr., \$300.
 Ohio Valley Ass'n—J. McG., \$25.
 Pulaski Ass'n—Burnside ch. S. S., J. L. C., \$8.50.
 Salem Ass'n—Stithton ch., J. P. J., \$75.40;
 L. W. C., \$25; Vertrees ch., J. H. H., Tr., \$2.50; Constantine ch., S. O., Tr., \$5; Otter Creek ch., J. F. F., \$4.50; Blue Ball ch., J. F. F., \$12.50; New Salem ch., \$4.38; H. C. Hays, \$149.27.
 Severn's Valley Ass'n—Nolynn, J. P. J., \$105; H. C. H., Tr., \$149.37.
 Shelby Co. Ass'n—Christiansburg ch., B. T. R., \$12.43; Little Mt. ch., J. T. M., \$6.50; Clay Village ch., J. T. M., \$38.56; Bagdad ch., J. T. M., \$32; Buffalo Lick ch., J. T. M., \$4.50; Salem ch., J. T. M., \$30; Waddy ch.,

... BETHEL FEMALE COLLEGE ...

HOPKINSVILLE, KENTUCKY

A BAPTIST SCHOOL FOR GIRLS AND YOUNG LADIES



Faculty of experienced, college trained specialists. Three years of college work in addition to the standard college entrance courses. Modern work and methods in Music, Expression and Domestic Science. Large campus and beautiful classic building. Home life of pupils, not excelled in any College in the South. High School graduates will find here an opportunity to continue their work for several years at a nominal cost. 58th year begins September 6th. For catalogue address.

H. G. BROWNELL, President.

Founded in 1874 **CLINTON COLLEGE** **A Flourishing School**
Coeducational **Personal Attention**

Motto: Character and Scholarship.

Fourteen well trained instructors. Students from eight States and two foreign countries. Beautiful campus of twelve acres, shaded with large trees. Well appointed buildings, modernly equipped.

Offers courses leading to degrees A. B. and B. S. Superior advantages in Music (Piano, Voice, Violin, Organ, Guitar), Expression, Art, Normal, Bible, Academic, Book-keeping, Stenography, Typewriting and Elementary Agriculture.

Located in one of the most inviting towns of the country, noted for its schools, health, beauty and refined people. **NO SALOONS.**

Expenses very moderate. Extra inducement offered in connection with one of the specialties. Write Immediately for catalogue to **J. A. LOWRY, A. M. D. D., Pres.**

J. T. M., \$24.05; Shelbyville ch., J. T. M., \$13.50; Little Mt. ch., J. T. M., \$34.60; Burk's Branch ch., J. T. M., \$23; Bagdad ch., J. T. M., \$18.75; Clay Village ch., J. T. M., \$171.83; Mt. Pleasant ch., J. T. M., \$55.45; Mt. Moriah ch., J. T. M., \$4.20; Christiansburg ch., J. T. M., \$14.50; Buffalo Lick ch., J. T. M., \$8; Salem, J. T. M., \$85.60; Simpsonville ch., J. T. M., \$51.42; Dover ch., J. T. M., \$72.41; Graffensburg ch., J. T. M., \$10.05; Christiansburg ch., O. H., \$2.57.

South Cumberland River Ass'n—J. V. L., \$1.36.

South District Ass'n—O. P. B., Tr., \$73.72.

Tate's Creek Ass'n—Kirksville, W. D. P., \$6.05.

Ten Mile Ass'n—Concord ch., S. J. E., \$17.55.

Three Forks Ass'n—Hazard ch., A. S. P., \$10.

Union Ass'n—Powersville ch., J. P. J., \$15.

Warren Ass'n—First ch. S. S., Bowling Green, B. P. E., \$12.94; Oak Forest ch., Mrs. J. C., \$1.

White's Run Ass'n—Cove Hill ch., G. F. B., \$10.10.

Wayne Co. Ass'n—Salem ch., R. H. H., \$4.65.

West Union Ass'n—Twelfth St. ch., Paducah, \$7.17; First ch., Paducah, W. W. R., \$60; Blandville ch., E. R. R., \$4.50; East ch. S. S., G. M. L., \$5; Blandville ch., E. R. R., \$1.50.

JULY RECEIPTS CONTINUED.

Salem Ass'n—Stithton, L. W. C., \$25; Otter Creek ch., G. B. M., \$12.50; Grand View ch., \$2; New Highland, H. H. F., \$1.65. Rent on Building—J. M. H., \$16.50.

Severn's Valley Ass'n—W. W., Tr., \$50.27. Simpson Ass'n—J. H. C., Tr., \$530.35.

Shelby Co. Ass'n—J. T. M., Christiansburg, \$7.50; Mt. Moriah, \$16.85; Buffalo Lick, \$11.40; Mt. Vernon, \$9; Beech Ridge, \$3.74; Shelbyville, \$30.

Three Forks Ass'n—Jackson ch., C. T. B., \$10.

Union Ass'n—Powersville ch., J. P. J., \$40.

West Union Ass'n—E. R. R. \$1.75.

Warren Ass'n—Smith Grove ch., Mrs. J. C., \$1; First ch., Bowling Green, B. P. E., \$54.22; S. D. W., \$4; Smith's Grove ch., Mrs. G. C. G., \$60.

Wayne Co. Ass'n—Parnell ch., J. L. B., \$5.40.

West Kentucky Ass'n—Arlington, W. C. T., \$8.25.

Journals—Miss M. Baird, \$3.25; Rev. J. H. Swan, 50c; Mrs. M. M. Tucker, \$3; Miss M. Ryland, \$1.80; Z. P. Hamilton, 60c; J. A. McFarland, 60c; Miss N. Sherrill, \$2.35; A. N. Moore, \$4.25; G. T. Clark, 25c; G. F. Holloway, 25c; Mrs. M. H. Dudley, 60c; W. D. Powell, \$1.80; Miss M. Ryland, 60c; Mrs. Merrie Melloo, 60c; W. D. Powell, \$6.35; Adv. Ky. M. M., \$10; L. F. Caudill, 60c; Miss N. V. Bulloch, 35c; W. C. Markert, 85c; W. D. Powell, \$3; E. J. Weller, \$1.55; Southern Baptist Theological Seminary, \$6.

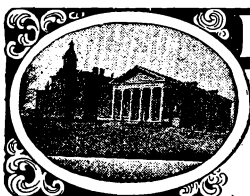
The Southern Baptist Theological Seminary

LOUISVILLE, KENTUCKY.

Next session of eight months opens October 1st. Excellent equipment; able and progressive faculty; wide range of theological study. If help is needed to pay board, write to Mr. B. Pressly Smith, Treasurer of Students' Fund.

For Catalogue or other information, write to

E. Y. MULLINS, President.

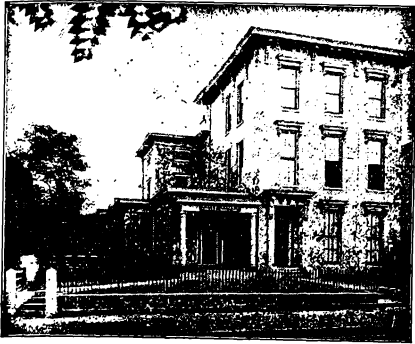


Liberty College FOR YOUNG LADIES
ESTD. 1874

A SELECT AND HIGH GRADE SCHOOL

Modern equipment. Laboratories. Steam heat. Libraries. Gymnasium. Delightful climate. School opens Sept. 14th. Send for catalog.
R. E. HATTON, Ph.D., President. REV. G. M. BUSH, A. M., Associate Pres.
GLASGOW, KENTUCKY.

A CHAPEL FOR PATRONS



LEE E. CRALLE

Funeral Director

S. W. Cor. 6th and Chestnut Sts.
Telephone Main 430

LOUISVILLE, - KENTUCKY

Home Phone 8700

Cumberland Main 1041-Y

Office Equipment Co.

Incorporated

Modern Office Devices

Office Supplies

125 S. 4th Ave. Louisville, Ky.

Home Phone 351 Correspondence Solicited

BLUM ART GLASS CO.

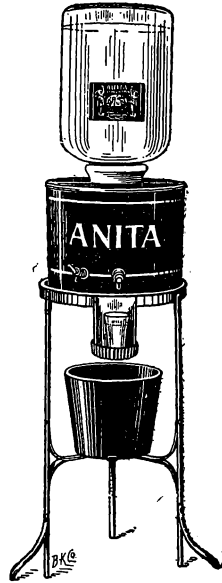
INCORPORATED

Maker of Church Windows

640 Third St. Louisville, Ky.

“ANITA”

AMERICAN LIGHTEST WATER
Always Pure, Fresh & Invigorating



THE BEST COOLER ON THE MARKET

Anita Spring Water Co.

INCORPORATED

PHONES { Home 4520
Cumb. M. 1468-A LOU., KY.

-----WE ARE-----

MANUFACTURERS OF

MONUMENTS

Of High Class, But Moderate Prices

Peter-Burghard Stone Co.

SALESROOM

317 W. Jefferson St.

PLANT

13-14 Maple St. Louisville, Ky.

DO YOU BELIEVE IN CHRISTIAN EDUCATION?

Are You a Baptist? Is it worth anything to you?

To have in Kentucky a Baptist College equal in rank to the best Colleges in any state?

IS IT WORTH ANYTHING TO YOU

To have your sons and daughters educated in a College distinctively Christian and under men and women loyally devoted to the Denomination to which you belong.

The Baptists of Kentucky have just given liberally of their money to Georgetown College and \$10,000 additional endowment have been raised. This means increased facilities, better equipment, larger teaching force and improvements along many lines.

The College now asks the Baptists for their sons and their daughters that it may fulfill the high mission to which it has been dedicated.

FOR INFORMATION OR CATALOGUE WRITE TO

E. B. YATES, Secretary : : Georgetown Ky.

BETHEL COLLEGE

A BAPTIST SCHOOL FOR YOUNG MEN.

The only college in the State west of Lexington doing what is officially recognized as standard college work. Accepted for membership in the Association of Kentucky Colleges and Universities.

LOCATION—Beautifully wooded campus adjoining Russellville, county seat of Logan county, Kentucky. Distinctly moral atmosphere.

EQUIPMENT—Endowment constantly on increase. Five buildings, each well adapted for special purpose. Library containing 7,000 volumes. Laboratories with every convenience for experimental work. Men's dormitory and dining hall with up-to-date accommodations for 100 students. Two literary societies, each with well furnished hall.

Our attractive literature will interest you and your boy.

COURSES—Choice of courses leading to B. A. and B. S. degrees. Also advanced courses with Master's degrees. Business training, including typewriting, stenography, bookkeeping, letter-construction, handwriting, punctuation, etc. Academy department for young students. Training in public speaking.

Expenses moderate. For any information address.

F. D. PERKINS, President

Box 333, RUSSELLVILLE, KY.