

KENTUCKY MISSION MONTHLY.

"Let Him That Heareth Say Come."

VOL. II.

NOVEMBER, 1903

No. 7

THE ENTRUSTED LETTER.

BY MISS FANNIE E. S. HECK.

One day Farmer Bliss received a letter from a great prince. When he opened it, what was his delight to find that it contained a check for a large sum of money, and a promise that if he used this well he should constantly receive more, and by and by be allowed to remove to a still larger estate than he could possibly buy in this country on the Prince's own possessions. How rich and happy he felt! "This is good news truly," he exclaimed. Indeed, for a time he was so overjoyed that he failed to notice that there was another letter enclosed in his. He took it out eagerly, but was not a little disappointed to find it directed, not to himself, but to a man who lived at some distance from him. Holding it up to the light, he thought he could see the end of a check just like his own, but of this he was not certain until, taking up his own letter again, he saw a postscript which he had before overlooked.

"Will you have the kindness," the postscript read, "to hand the enclosed letter, which contains a check and promises exactly similar to your own, to your neighbor, Purmon Knight?"

"Why," exclaimed Farmer Bliss, "I'd hardly call him a neighbor. He lives full ten miles from here. I don't believe I ever saw him, and the little I know about him hasn't been much to his credit. A kind o' ne'er-do-well fellow. I think the Prince might have found some one near by to send the letter by, else sent to him direct. It does seem a little unreasonable if I do say it, as I oughtn't to, to ask me to take that long journey. Nevertheless, since he did ask it, I'll take or send it the first time its convenient; but just now I shall be uncommon busy getting the things I so much need with this check."

So he slipped Purmon's letter into the big family Bible, and as it chanced it covered the last three verses of the last chapter of Matthew.

For days and weeks every time Farmer Bliss' eye happened to light on the Bible on the centre table, he resolved he would take the letter over the next day, if it was convenient, but somehow it was never convenient. His new estate must be fenced in, a better house built for himself and family, and each day was full of some new work for his own comfort. Thus the weeks lengthened into months. One bright May morning he was busy superintending a large new barn in which to bestow his great increase, when a neighbor drew up to the fence.

"Have you heard the news?" he asked. "A man died last night of

starvation down Darkville way."

"You don't mean to say so!" exclaimed Farmer Bliss, stopping a moment in his work. "It's a shame such things should be. Did you happen to learn the man's name?"

"Yes," replied the neighbor. "It was Purmon Knight."

Purmon Knight! Purmon, for whom a check for houses and lands and food and clothing lay in his Bible. The saw fell from Farmer Bliss' hand. He went into his house and shut the door. From between the leaves of his Bible the yellowing edge of the letter for Purmon Knight pointed at him. He fell upon his knees, but even as his stiff lips tried to say, "Oh, Lord, forgive!" he seemed to hear a voice—stern, awful—saying, "His soul shall be required of thee."

And who was Farmer Bliss? Ah, who but you, if so be you have held back the good news from any one for whom it was entrusted to your care. Open your Bible at the last chapter of Matthew, and see if the Prince's letter to some starving soul does not lie covering the verses at its close. Hasten, hasten; let him have it, ere it is too late.—From the Foreign Mission Board.

HAWESVILLE, KY.

After several months of pleadings in regard to our attempt to regain our property, we have at last arrived to the near scene of decision. The first week in December our case will be brought before the Hancock County Circuit Court for trial, and judging from the opinion of those who have power to interpret such matters, we will be victorious. Our safety lies in the provisions of the deed made in 1840. Our people have been deprived of their house of worship for about two years, and have been worshipping in the Presbyterian church so kindly offered by them. There are a great many who are delaying their decision as to a church home and for Christ until the court shall decide as to the rightfulness of our claims to the property.

This all comes, brethren and sisters, through negligence and carelessness in not looking into the worth or fitness of a man claiming to be a Baptist minister. Our Master gave and sounded the warning centuries ago, and may the churches strive the more to know hether a man has been what he proclaims to be or not. No man has a right to be received among Baptists who cannot and does not believe in the doctrines and principles which are so peculiar to us as a denomination of independent churches in Christ.

Pray for us, that God may lead us in all things, and may He raise

up for us men who are thoughtful enough to safeguard our churches in the conveyance of property and in the presentation of the "Word of Truth," is my prayer and earnest wish.

The State Executive Board of Missions help to sustain the work at Hawesville, and the writer is one of its selections to serve the brethren at Hawesville, and may be he lead of His Spirit to do His will. W. OSCAR HENDERSON.

CHRISTIAN (?) EXCUSES.

"Come, for all things are now ready and they all with one consent began to make excuse."

The world is full of people excusing themselves for not going to God's house. Do you go to church regularly? If not, what is your excuse? "I'm a stranger," you say. Well, strangers are welcome at God's house "I'm not a Christian." So much the greater need that you hear the Gospel. Jesus says, "They that are whole have no need of a physician, but they that are sick. I came not to call the righteous, but sinners." Jesus invites you. We press His invitation. "Come, then, with us and we will do thee good."

"I'm not a Baptist." Come along; our doors are open to all. We are not a selfish people.

"I'm a Baptist but don't belong here." Why don't you belong here? Are you willing to make this your home, and these people your neighbors, and say to them by your actions, I don't care to associate with you in a religious way? Show them that you don't mean this by taking your stand with God's people where you live.

"I'm a member here but don't go to church much." Why not? Have you and the Lord had a falling out? Have you decided to serve Him no longer? God commands His people to go to church, to read the Bible, to pray, to love one another, to make an offering of their substance every Sunday, as He prospers them; has He given you a special permit to disregard His commandments? You know He has not; but He says to you, "Why call ye me Lord, Lord, and do not the things which I say?"

Our Father's Chastening Rod.

Christians sometimes wonder why they have so much trouble; why this sickness, this accident, or this wayward child that causes so many heartaches, this loss of property, this sore bereavement. Better examine and see if it is not your Father chastening you. His disobedient child. "For whom the Lord loveth, He chasteneth and scourgeth." Read Heb. 12: 5-11.

You may stay away from church when you can go, but do not be

surprised if the Lord afflicts you or your family so you can't go. You may withhold your gifts from the Lord's work, and then pay that and more for doctors, medicine, funerals, losses, failures and what not. He says: "Will a man rob God? Yet ye rob me. . . . In tithes and offerings. Ye are cursed with a curse; for ye rob me." No saved man or woman can prosper and be happy who lives in perpetual disobedience to the commandments of God. For He says: "That servant which knew his lord's will, and made not ready, nor did according to his will, shall be beaten with many stripes." And again: "If ye are without chastening whereof all have been made partakers, then are ye bastards and not sons." If God does not chastise you for your sins and disobedience, then, according to His Word, you are not His child. A church member you may be, but not a Christian.

Now for very shame throw away all excuses and "come up to the help of the Lord. To the help of the Lord against the mighty."

F. P. GATES.

DISTRICT ASSOCIATIONS

A question concerning the closer union, fuller affiliation and co-operation between all our District Associations and the General Association has been frequently presented by the Corresponding Secretary at our associational gatherings; the matter was specifically mentioned in the last annual report of the State Board, an article was published once before in the *Western Recorder* asking the editors, pastors, missionaries and members of the State Board to consider and discuss the matter, and suggest the nature and extent of such union. The argument set forth in the annual report, I think, is sufficient to convince one who will carefully consider the matter: There are some Associations which have a surplus in their treasury and yet receive help from the State Board Others who have great needs in their bounds which must be met and which are being met as we are able by the State Board, and while the churches of some of these Associations are able and do give largely to other objects, do very little for the State work. Brethren, these things ought to be remedied. Will you help? Give us the benefit of your wisdom. Our plea is, that there ought to be a united effort by our District and State Boards to meet the destitution in our State. Let there be one fund, State Missions, and then let the District Boards superintend the work in their own bounds.

KENTUCKY MISSION MONTHLY

Published Monthly at 642 Fourth Avenue
Louisville, Ky.

J. G. BOW,Editor

PRICE TWENTY-FIVE CENTS PER YEAR.

Entered February 5, 1903, at Louisville, Ky.
as second-class matter, under Act of
Congress, March 3, 1879.THE STATE BOARD OF MISSIONS
Meets at Norton Hall, Tuesday, Decem-
ber 1st, at 2 p. m.J. M. WEAVER,President
R. A. DAWES,Recording Secretary
J. G. BOW,Corresponding SecretaryThe blue mark by your name on
your paper means your time has
expired, and you are kindly asked
to renew. Help carry the work.

THE EXECUTIVE BOARD.

M. B. Adams, B. B. Bailey,
J. A. Bennett, Preston Blake, J.
A. Booth, Lee E. Cralle, B. J.
Davis, B. A. Dawes, B. H. De-
ment, T. T. Eaton, W. H. Felix,
H. G. Garrett, J. S. Gattson, Er-
erette Gill, P. T. Hale, W. W.
Hamilton, W. P. Harvey, S. H.
Haycraft, J. W. Hedden, H. H.
Hibbs, J. P. Jenkins, C. H. Jones,
Byland Knight, J. A. Middleton,
G. W. Perryman, J. N. Prestidge,
R. E. Reed, W. M. Stallings, B.
F. Swindler, R. W. Taylor, C. M.
Thompson, H. E. Tralle, J. W.
Waldrop, J. M. Weaver.Pastor W. H. Robinson, our
missionary at Second church, Pa-
ducah, is in a meeting with Fleet-
wood Ball assisting.Dr. A. F. Baker is assisting Pas-
tor Barnett in a meeting at Jelli-
co, Tenn.Bro. R. L. Baker will begin a
meeting at Paintsville, with mis-
sionary pastor Charles Martin,
Nov. 15.Our receipts have never in any
month been equal to the receipts
of October, 1903, except the month
of April, 1902 and 1903. In Octo-
ber we received \$6,982.88.The total receipts to date ex-
ceed the receipts of last year up
to Nov. 1st by \$3,797.74.Rev. W. M. Kuykendall goes to
Burkesville as pastor. The out-
look for our work there is very
hopeful. We expect to hear good
reports from this field.Rev. L. P. Edwards is the mis-
sionary of Green River Associa-
tion, employed jointly by the
State Board and the Board of
Green River Association.Rev. A. J. Foster has been em-
ployed as missionary pastor at
Thirty-sixth and Grand Aves.Graves County is arranging to
employ a missionary to be paid
jointly by the District and State
Boards.

REPORTS.

Our missionaries, exclusive of
the colporters, report for one
month past 690 sermons, 119 pray-
er meetings, 122 professed conver-sions, 116 baptisms, 45 added by
letter.

REMITTANCES.

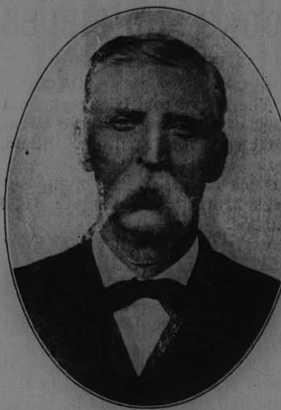
So many of our Associations
only send in mission contributions
once a year. Perhaps some of the
churches only contribute once a
year. This method can never de-
velop the grace of liberality in
your hearts nor in your member-
ship. You could never secure an
education or proficiency in any
profession by simply taking one
lesson a year. Besides, it is con-
trary to God's plan. He says:
"Upon the first day of the week
let every one of you lay by him
in store, as God has prospered
him." This is God's plan, and
unless you are wiser than He, you
had better not attempt to im-
prove upon it. Unless you have
authority, you had better not
change it or neglect it. Then
when you have laid aside your
weekly contribution, put it into
the Lord's treasury, at least as
often as you meet for worship.
Then if your church treasurer
sends it through the treasurer of
your Association, instruct both
of these officials not to hold the
money, but forward at once to the
Corresponding Secretary of the
State Board. We settle every
month with our missionaries and
with the Home and Foreign
Boards.SUNDAY SCHOOL AND COL-
PORTAGE.Last year we expended about
\$4,500 in this important work.
Nearly half of our Associations
gave nothing to Colportage. Many
prominent churches in other As-
sociations give nothing. This
fund is in debt.We have appealed to all the
Sunday Schools in the State to
give us one Sunday's collection
for this work. Only a few have
responded. Will you please at-
tend to this at once and relieve
us in this direction? This is le-
gitimate work for our Sunday
Schools. We need it so much
right now. I am sure there will
be a generous response by the
Sunday Schools if this is present-
ed to them.

CONTRIBUTIONS COMPARED

We received for all purposes in
May, 1902, \$650.95; May, 1903,
\$773.61; June, 1902, \$461.59;
June, 1903, \$1,236.82; July, 1902,
\$1,136.98; July, 1903, \$1,815.23;
August, 1902, \$3,637.43; August,
1903, \$1,992.61; September, 1902,
\$1,833.11; September, 1903, \$2,
477.83; October, 1902, \$3,761.24;
October, 1903, \$6,982.88; Total,
1902, \$11,481.24; total, 1902, \$15,
278.74. Gain over last year,
\$3,797.74.Bro. R. R. Noel, who has
wrought so well at Pittsburg and
succeeded in liquidating the debt
on the building, has been succeed-
ed by a brother who, we under-
stand, proposes to preach for
nothing. We do not even know
the name of the man, but we pre-
dict that he will cost the church
very dearly.

TRIP NOTES FOR OCTOBER.

October 3rd was summoned to
Newport on account of the death
of Miss Helen V. White, daughter
of Wm. and Mary White. Preach-
ed for Pastor Thompson on 4th.
Returned home on 5th and attend-
ed meeting of State Board of Mis-
sions. Tuesday, 6th, returned to
Newport and assisted in the fu-
neral services of Miss White.
Wednesday, 7th was at Cynthi-
ana, at Union Association. Here
I was allowed to present the mis-
sion work and go on my way.
Union Association is able to do
much more for the great cause
of missions, and they will do more
than in the past. Thursday, 7th,
at Grant, at North Bend Associ-
ation. This was their centennial,
and great interest was manifest-
ed. They kindly gave the Secre-
tary the best hour. We expect
great advancement in North Bend,
and believe that we shall not be
disappointed.Friday, the 8th, we were at Wil-
liamsburg, at Mt. Zion Associa-
tion. Williamsburg church and
Williamsburg Institute is the
great throbbing heart-center
of this section. The influ-
ences of this church and
school are being felt all over
that region.Sunday, 11th, preached for Dr.
Swindler in the morning at Mad-
ison Avenue, where he has been
the faithful, efficient bishop for
about a dozen years. Preached at
night for Bishop C. M. Thomp-
son at Newport. The work here
is advancing with marvelous rap-
idity. The church debt, which
hung so long like an incubus over
this church, is being systematic-
ally and rapidly reduced. More
than \$2,000 of this debt has been
paid in the past year, the pastor's
salary has been increased and
over \$400 raised for missions.Monday, 12th, returned home
and spent the week in office work.Monday, 19th, leaving Louis-
ville at 3 p. m., went to Hender-
son, 20th, to attend Ohio Valley
Association. Spoke in Audubon,
a suburb of Henderson, where our
Board is aiding the church there
under the pastoral labors of Bro.
W. H. Bell. Returned to Louis-
ville Thursday. On Saturday,
24th, went to Pembroke, and on
25th to Kelly, where I had agreed
to aid in the dedication of the
church building. The pastor's
family was sick and the dedica-
tion had been postponed. Re-
turned to Pembroke and had the
pleasure of preaching to the saints
of this thriving town, where I
have served twice as pastor. Not-
withstanding there was a pro-
tracted meeting in progress in an-
other church in town, they gave
me a large congregation and a
cordial greeting.On 26th went by way of Nash-
ville to Paducah to Mayfield and
preached for Dr. A. S. Pettie, the
popular Mayfield bishop. Bro.
W. M. Wilson kindly took me to
Graves County Association at
Oak Grove, where we had the
pleasure of speaking in behalf of
the mission work. Elder W. F.
Lowe, the Moderator, showed us
special kindness. This Associa-
tion is very largely under theinfluence of what is called "Gos-
pel Missions," but with the ex-
ception of Mayfield they are not
doing much mission work. This
is the last of the Associations for
this fall. Yet there is much work
to be done.The Fifth Street church, Lex-
ington, Rev. Charles W. Elsey
pastor, gratefully acknowledges
the timely aid received from the
Home and State Boards, and an-
nounces their intention to now
release the Boards and carry their
own work. "Who'll be the next?"
There are other points which
ought to release the State Board.
There is so much destitution, so
many new fields ought to be en-
tered; can't you release the
Board, or decrease the appropria-
tion?The Kentucky Mission Monthly
only costs 25 cts. a year, and
only 15 cts. in clubs of ten or
more. Send us a good club from
every church. We want to tell
you about our mission work and
our missionaries. We appeal to
the Ladies' Societies—send us a
club, and send us notes on your
work.The church at Jackson is nearly
completed, except the furnace
and some small matters, but it
is not all paid for. Won't you
help us? The Secretary will
preach there the eighth.In another column you find a
cut of Dr. J. Wendell Black-
burn. Also a note of inquiry.
Anyone knowing anything of his
relatives, business or history will
confer a favor by writing at once
to J. G. Bow, Louisville, Ky.,
Box 504.Pastor H. Boyce Taylor writes,
"Blood River Association gave
for all missions this year about
\$1,400. We are planning and
praying for \$1,500 the coming
year."Bro. F. P. Gates, our mission
pastor at Livingston, is pushing
the building of his church house.
Additions to their membership
are almost weekly. From about
ten last February they have grown
to about seventy-five.STATEMENT OF RECEIPTS
FROM CHURCHES OF LIT-
TLE RIVER ASSOCIATION.Per Dr. R. W. Morehead, Beth-
any, \$7; Bethlehem, \$2.80; Blue
Spring, \$14; Buffalo Lick, \$5.25;
Cadiz, \$36.28; Cerulean Springs,
\$5.25; Cumberland River, \$2.25;
Eddyville, \$2.50; Fairview, \$1.05;
Hebron, \$1.05; Harmony, \$14.88;
Hurricane, \$7; Kuttawa, \$8.40;
Lebanon, \$3.50; Liberty, \$7; Lib-
erty Point, \$11.20; Little River,
\$14; New Prospect, \$2.80; Oak
Grove, \$5.60; Princeton, \$26.85;
Rocky Ridge, \$14; Shady Grove,
\$6.30; West Union, \$21. Total,
\$212. Previously sent, \$100.00.
Given to District Missions, \$149.
91; paid other missionaries, \$52.
77. Total for the year, \$514.84.



REV. J. WENDELL BLACKBURN, M.D.

The above is a picture of J. Wendell Blackburn, M.D. He was a native Virginian, educated in Europe, practiced medicine several years, I think, in Missouri, entered the ministry and was a very acceptable and popular preacher. He was missionary pastor at Burkesville, Ky., where he had succeeded in building a nice church house. He went to Nashville in March, 1903, for medical treatment, where he died.

Any information regarding his relatives, history or business will be gratefully received. Address, J. G. Bow, Louisville, Ky., Box 504.

OCTOBER RECEIPTS.

Campbell County Association, from Oak Island church, per Miss Willie M. Morgan, \$10; Long Run Association, per Chas. M. Haddaway, from 26th and Market St. church, \$52; Book Sales, per W. A. M. Wood, \$7.55; Book Sales, per J. L. Adkins, \$11.39; Campbell County Association, per C. M. Thompson, from Newport church, \$28.80; Booneville Association, per H. R. McLendon, \$10.45; Goshen Association, per H. C. Hayes, \$161.67; West Union Association, from Second church, Paducah, per W. H. Robinson, \$2.54; South Cumberland River Association, per John M. Floyd, \$47.07; Rockcastle Association, per F. P. Gates, \$2.90; Goshen Association, per W. B. Montgomery, \$35.28; Little Bethel Association, per W. T. Daves, \$120; Book Sales, per M. L. Blankenship, \$6; West Kentucky Association, per R. W. Mahan, \$33.15; for Jackson church building, Severn's Valley Association, per H. D. Marriott, \$417.60; Pleasant Grove church, per W. T. Short, \$6.20; Corinth church, \$1.06; Tates' Creek Association, per J. M. Bruce, from Kirksville church, \$8.25; Simpson Association, per J. H. Covington, \$75; Concord Association, per R. J. Walker, \$817.64; Long Run Association, per T. J. Humphreys, Broadway church, \$53.36; Bethel Association, per J. F. Garnett, Foreign Missions, Hopkinsville church, \$13.49; West Union church, \$1; Walnut Grove, \$2.80; Pleasant Hill church, \$1.15; Armageddon, \$17; Adairville ch'ch, \$5; Pleasant Hill church, \$2.50;

Hopkinsville church, \$150; Hopkinsville church, \$22.51, apportioned \$69.84, total, \$285.29. Home Missions—Spring Valley, \$5.65; Hopkinsville church, \$13.49; Forest Grove church, \$5; Hopkinsville church, \$22.51; apportioned \$69.84, total, \$116.49. State Missions—Spring Valley church, \$8.80; Hopkinsville ch'ch, \$9; Russellville church, \$27.16; Hopkinsville church, \$15.01; apportioned, \$55.87, total, \$115.84. State S. S. and Colportage—Hopkinsville church, \$6; apportioned, \$27.94, total, \$33.94. Daviess Co. Association, per W. H. Owen, \$683.81; Long Run Association, per D. B. Clapp, \$4; Union Association, per A. R. Wright, \$5.10; Campbell County Association, per C. M. Thompson, \$30.20; North Bend Association, per B. F. Swindler, \$249.20; White's Run Association, from Carrollton church, for Hazard School, \$65; West Kentucky Association, per Don Singletary, \$80.94; Book Sales, per Malcolm Thompson, for J. B. France, \$15; Little Bethel Association, per G. W. Davis, for Ministers' Aid, \$4.15; Goshen Association, from Goshen church, per Miss Georgia Roberts, \$147; Sulphur Fork Association, per W. J. Morris, Jr., \$532.99; Book Sales, per M. L. Blankenship, \$12.15; Long Run Association, per Chas. M. Haddaway, 26th and Market St. church, \$52; Long Run Association, per Theo. Harris, church building fund, \$113.29; Interest on Certificate of Deposit, \$45; Little River Association, per R. W. Morehead, \$212; Campbell County Association, per John Griefe, from Dayton church, \$16.49; Bethel Association, per Lyman McComb, from Pembroke Sunday School, \$5; Long Run Association, per T. B. Hamilton, Missionary Society, Parkland, ch., \$15.13 for Sunday School Board; West Kentucky Association, per Don Singletary, \$126.52; F. P. Roberts, \$10, to pay coupon Ministers' Aid Society; West Union Association, per T. B. Rouse, \$130.38; Elkhorn Association, per Malcolm Thompson, from Woman's Missionary Societies, Cane Run church, \$25, and Dry Run church, \$25; Long Run Association, per Miss Belle Moreman, Beechland church, \$1.21; Booneville Association, per H. R. McLendon, \$4.75 for Orphans' Home and Ministers' Aid Society; White's Run Association, per J. M. Giltner, for temperance cause, \$21; Long Run Association, per T. J. Humphreys, Broadway church, \$70; Ten Mile Association, per J. T. Points, \$119.24; Ohio Valley Association, per P. B. Miller, \$400.59; Blood River Association, per H. B. Taylor, \$331.14; Book Sales, per J. W. Bodine, \$4.55; Book Sales, per J. W. Walker, \$1.00; South Cumberland River Association, per Geo. E. Baker, Steubenville church, \$2.83; Salem church \$1.24. Total, \$6,982.88.

Bro. W. C. Pierce has resigned at Catlettsburg. He goes to Tennessee. We regret to lose him from our mission work and from our state.

Southern Railway

BEST LINE TO St. Louis

TWO TRAINS DAILY
THROUGH WITHOUT CHANGE

TICKET OFFICES
232 FOURTH AVENUE AND
7th St. (UNION) DEPOT,
LOUISVILLE, - - - KY.

M. WOLF & SONS

Wholesale and Retail
GROCCERS

If you are in the market for good Groceries at Rock Bottom Prices, give us a Trial Order. We will surely please you. Out of town orders a specialty, as we ship to all R. R. Stations. Write for prices, it will pay you. Our Premium Brand Flour, the best made, at \$3.75 is a trade winner.

Cor. 10th and Market Sts.
Established 1865 LOUISVILLE, KY.

Illinois Central

The only line running Through
Sleepers from Louisville to

Los Angeles and San
Francisco without
any change

SHORTEST LINE TO NEW ORLEANS

CITY TICKET OFFICE
S. E. Cor. 4th and Market Sts.
LOUISVILLE, KY.

The Western Printing Co.

642 Fourth avenue
LOUISVILLE, KENTUCKY

Printers
Binders
Publishers

The
Wellington
No. 2



The
Unexcelled
Typewriter

We believe this machine is the equal of any machine in the market. We have used one in our office for more than a year and are well pleased with it. PERMANENT ALIGNMENT, VISIBLE WRITING, MINIMIZED KEY BOARD, SIMPLICITY, DURABILITY, PORTABILITY, are the features of excellence of this machine. Price \$60.00. It was chosen by us after examining all the kinds of machines within reach.

Write to J. G. BOW, Special Agent, Box 504, Louisville, Ky.
FREDERICK DIEHL, Gen. Agt., 210 W. Market St.
If you write Mr. Diehl be sure to mention this paper.—Ed.

Bryant's Station

BUSINESS COLLEGE

The Great Business Training School
of Louisville

offers the latest and best methods,
and the most complete course of
study in

Bookkeeping

Penmanship, Shorthand, Typewriting
and other branches pertaining to a

BUSINESS EDUCATION

Able and experienced teachers. School
open the entire year. Students may enter
at any time. Elegant catalogue free.

E. J. WRIGHT, President,
N. E. Cor. 2d and Walnut, Louisville, Ky.

The Louisville and Nashville Railroad

HOMESEEKERS' EXCURSION

AND
ONE-WAY SETTLERS RATES

On the first and third Tuesday of each month, January, 1903, to April, 1903, inclusive, this Company will have on sale at Cincinnati, Louisville, Owensboro, Henderson, Evansville, St. Louis, and principal stations between Evansville and St. Louis, Homeseekers' Excursion Tickets and One-Way Settlers Tickets to points in Alabama, Florida, Georgia, Kentucky, Mississippi, North and South Carolina, Tennessee and Virginia. Rates for Homeseekers' tickets will be one fare plus \$2.00 for the round trip, tickets being limited for return twenty-one days from date of sale, with privilege of stopovers on going passage of fifteen days at any station on the Louisville and Nashville Railroad, and at principal stations on connecting lines. One-Way Settlers' Tickets will be sold at one-half the regular one-way fare, plus \$2.00, and are good for one way only. For further information apply to any representative or address

C. L. STONE,
General Passenger Agent
Louisville, Ky.

"My friend, Dr. Hunter, said to me the other day that he had a conversation with a learned priest of Alton, Ill. The priest asked him, 'To what church do you belong?' Hunter replied, 'I belong to the church.' Whereupon, the priest remarked, 'That is the Baptist church.' The Doctor said, 'Yes.' Then the priest stated, 'The Catholic church is at one end of the line and the Baptists are at the other end.' Dr. Hunter asked 'Are not those churches between the Catholic church and Baptist churches Scriptural churches?' The priest replied, 'They are not, there is no room for them. All they have that differentiate them from the Baptists belongs to our end of the line and what they hold in harmony with Baptists belonged to the Baptists before they existed.' The priest stated what is called 'the logic of facts.'—J. J. Porter, in Baptist Argus.

Keep the sunshine of living faith in the heart. Do not let the shadow of discouragement and despondency fall upon your path. However weary you may be, the promises of God will, like the stars at night, never cease to shine, to cheer and to strengthen. The best harvests are the longest in ripening. It is not pleasant to work in the earth plucking the ugly tares and weeds, but it is necessary as sowing the seed. The harder the task the more need of singing.—"Royal Path of Life."

The temper of sadness is also fatal to the free action of the sovereign Spirit. The spark of heaven's fire may be drowned with tears. Sighs and complaints often indicate ingratitude, selfishness, unbelief; and we must watch and pray against these perilous moods. By incessant murmurings the children of Israel grieved and vexed the Holy Spirit; and still we do the same. Sadness is sometimes sin of the worst kind, and it never fails to damp, obscure and choke the holy fire.—William L. Watkinson.

Bro. J. L. Adkins is doing fine work at Russell Springs and Hopewell.

The District Associations are over, and the outlook for our work is very hopeful.

AGENCY FOR
The **Aetna Registry Co.**
Offers the best system of Registration, combining Personal Identification, Registration and Recovery of Keys, and an Accident Insurance Policy for

\$1.000

in the Union Casualty and Surety Co., of St. Louis.

All this Protection furnished for
\$1.00 Per Year

ACCIDENT INSURANCE FOR
\$1000 costs \$1.00 per year; pays \$7.50 per week for five weeks.
\$1500 cost \$1.50 per year; pays \$15 per week for fifteen weeks.
\$3000 cost \$3.00 per year; pays \$30 for twenty-six weeks.
The principal sum is paid for accidental death.

Call on or Write to
S. H. BOW
642 Fourth Avenue, second floor
Louisville, Ky.

What Baptists Believe and Why They Believe It

This Little Pamphlet contains a brief, concise statement of

The Absolute Authority of the Scriptures
The Atonement
Salvation
Regeneration
Repentance
Faith
Justification
Perseverance or Preservation
The Church
Church Members and Officers
Baptism—What is it?
Baptism—Immersion
Washings in the New Testament
Believers Baptism
Design of Baptism
Proper Administrator of Baptism
The Lord's Supper
Missions

The Third Issue, the 10th thousand of this little booklet, is now before the public.

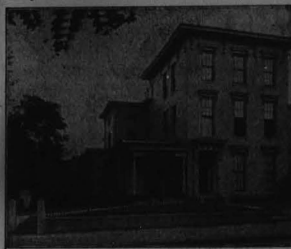
Price 10 cents

Sent postpaid on receipt of price. Special discount to colporters and to pastors who desire to furnish their people with this treatise to help to indoctrinate them.

FOR SALE BY
BAPTIST BOOK CONCERN
642 Fourth Ave.
Louisville, Ky.

—OR BY THE AUTHOR—
J. G. BOW
Box 504 Louisville, Ky.

A CHAPEL FOR PATRONS



LEE E. CRALLE
Funeral Director
S. W. Cor. Sixth and Chestnut Sts.
LOUISVILLE, KY.
Telephone Main 430.

REULING
PHOTOGRAPHER

**Best Work
Lowest Prices**

810 WEST MARKET STREET
LOUISVILLE, KY.

Home Phone 5163.

1904-WORLD'S FAIR LINE-1904



**Louisville, Henderson
AND
St. Louis Railway**

MORNING and NIGHT trains between LOUISVILLE and ST. LOUIS. THREE TRAINS between LOUISVILLE, OWENSBORO, HENDERSON and EVANSVILLE, and they are all DAILY.

Elegant equipment on all trains. Parlor Cars on Day Trains. Pullman vestibuled Sleepers on Night Trains.

ASK US FOR RATES

To All Points in the West and Southwest.

D. J. IRWIN, E. M. WOMACK,
Gen. Pas. Agt. City Pas. Agt.
LOUISVILLE, KY.

Bro. J. E. Wolford, missionary-pastor has closed his work at Lancaster. We hope to retain him on the mission field.

Are you a subscriber to the Kentucky Mission Monthly? It will keep you posted about the Mission work. Only 25 cts. per year; in clubs of ten or more, 15 cts.

Hope is the architect and Will the builder of the house of success.

BOOKS AND BIBLES

For Everyone

A CHOICE SELECTION

"The Map From Glengarry is a story of the East and the Great Northwest, very thrilling. 12mo, cloth \$1.50.

Black Rock. A Tale of the Selkirk. 210th thousand, cloth, \$1.25 and 25c.

A Sky Pilot. A Tale of the Foot-hills. 12mo, cloth. Illustrated by Louis Rhead, 110th thousand, \$1.25.

Justice to the Jew. M. C. Peters. \$1.00.

A Lily of France. Caroline Atwater Mason. A scene laid in Holland and France in middle of 16th Century. Once you begin you must finish it. \$1.25.

Friendship. Hugh Black. Printed in two colors. 17th thousand. 12mo, decorated cloth, gilt top, boxed, \$1.25.

Winsome Womanhood. Margaret E. Sangster. Gift edition. Illuminated pages and many extra illustrated in Sepia, by W. B. Dyer. 8vo cloth, boxed, \$2.50.

Old Folks' Testament and Psalms, Large print, easily read. Bound in cloth. Illustrated. Just the book you want; very cheap. Only 50 cts.

From the Ball Room to Hell. By Ex-Dancing Master Faulkner. The strongest book yet written against dancing. Price 25 cts.

Marriage Certificates. Our special, 30c each. Price per dozen, \$2.50. Then we have nice ones at 5c and 10c each. Beautiful ones at 15c, 25c, 35c and 50c.

Teachers' Bible, \$1.25, \$1.50, \$1.75, \$2.00 and up, post-paid.

Family Bibles, \$1.25, \$2.00, \$2.50, \$3.00 and up.

A FEW SPECIALS.

OF INTEREST TO PREACHERS AND CHRISTIAN WORKERS.

Pastor's Companion. Cloth. For Weddings and Funerals, 25 cts. Best Texts for Soul Winners. Vest-pocket size. Williams. Net 25 cts.

Pastor's Pocket Record, by Stall. Complete and useful record; leather, 75 cts.

Pastor's Hand-Book. Everts. Scriptural and Poetical Selections for Weddings, Funerals, and other Official Duties. Cloth 75c.

Star Book for Ministers. Hiccox. Leather. Net \$1.00.

Vest Pocket Companion for Christian Workers. Torrey. Net 25 cts.

Private Devotion. Series of Prayers and Meditations. Hannah Moore. 20 cts.

Deaconship (Howell), 40 cts.; Pendleton's Church Manual, 40c; Smith's Bible Dictionary, \$1.00; Marked New Testament, net 15c; Topical Text Book, net 30c; How to Bring Men to Christ, Torrey, 75c; New Testament, with notes, \$1.00.

Baptist Book Concern
Incorporated
LOUISVILLE, KY.

Authorized Agents
MOODY COLPORTAGE LIBRARY
When you think of Books, think of us