

KENTUCKY MISSION MONTHLY.

"Let Him That Heareth Say Come."

VOL. II.

AUGUST, 1903

No. 4

DISTRICT ASSOCIATIONS.

Place and time.—1903.

AUGUST.

Clear Fork—Green Ridge church, August 11.
Elkhorn—Wilmore, August 11.
South Kentucky—Fishing Creek church, August 11.
Shelby County—Buck Creek church, August 13.
Green River—Pleasant Union church, August 15.
Gasper River—Nelson Creek church, August 18.
South District—Danville, August 18.
Barren River—Sand Lick, Monroe county, August 19.
Campbell County—Grant's Lick church, August 19.
Franklin—Pleasant Ridge church, August 19.
Ohio River—Pineckeyville, August 19.
Ohio County—Independence church, August 25.
Tate's Creek—Tate's Creek church, August 25.
Baptist—Salvia, August 27.

SEPTEMBER.

Cumberland River—Rock Lick church, September 1.
Long Run—Long Run Church, September 2.
Ten Mile—Macedonia church, Sparta, September 2.
East Concord—Old Yellow Creek church, September 3.
Central—Hardin's Creek church, September 8.
Landmark—Pilot Knob church, September 8.
Rockcastle—Hummel Grove church, September 8.
South Cumberland River—Oak Grove church, Sept. 9.
Bay's Fork—Bay's Fork church, September 9.
Greenup—Cattlettsburg, September 9.
Lynn—South Fork church, September 9.
Owen—Lusby, September 9.
Sulphur Fork—Sulphur Church, September 9.
Boonville—Bethel church, September 11.
Greenville—Shiloh church, Menefee Co., September 11.
Stockton's Valley—Wolf River church, Tenn., September 12.
Boone's Creek—Ephesus church, September 15.
Crittenden—Crittenden church, September 16.
Nelson—Little Union church, September 16.
Russell's Creek—Macedonia church, September 16.
Warren—Rocky Hill church, September 16.
Lynn Camp—Lynn Camp church, September 17.
Irvine—Chinquapin Rough church, September 18.
Second North Concord—Clear Spring church, September 18.
Concord—Drennon's Ridge church, September 23.
East Lynn—Corinth church, September 23.
Edmundson—Mammoth Cave church, September 23.
Salém—Forks of Otter Creek church, September 23.
Freedom—Stony Point church, September 25.
Goose Creek—Rock Spring church, September 25.
South Union—Bethel church, September 25.
Three Forks—Dwarf, Perry county, September 25.
East Union—Rock Spring church, September 29.

Goshen—Garfield church, September 30.
Severn's Valley—Mt. Zion church, September 30.

OCTOBER.

Laurel River—New Hope church, October 2.
South Concord—Canada Creek church, October 2.
Davies County—Sugar Grove church, October 6.
North Concord—Big Brush Creek ch., October 8.
White's Run—Carrollton, October 6.
Little Bethel—Harmony church, October 7.
Little River—Kuttawa, October 7.
North Bend—Bellevue, October 7.
Union—Cynthiana, October 7.
West Kentucky—Zoar church, Oct. 7.
Enterprise—Fairview church, Johnson county, October 9.
Mt. Zion—Williamsburg, October 9.
Upper Cumberland—Slater's Fork, October 9.
West Union—Bandana church, Oct. 14.
Ohio Valley—Grave Creek church, October 20.
South Concord, South Cumberland and South Union did not elect at all.
Blood River—Pleasant Valley church, October 21.

DISTRICT ASSOCIATIONS.

Let every association appoint a messenger to the Southern Baptist Convention which meets in Nashville, Tenn., May 13, 1904. Appoint one man and then an alternate in case he fails. Being so near and so accessible, no doubt more Kentuckians will want to go than can be appointed. You cannot represent your association unless the association appoints you.

Then appoint one messenger to represent your association in the General Association of Kentucky, which meets at Campbellsville, June 16, 1904, then appoint one additional messenger for every 500 members in your association; for instance, if your association has 2,000 members, you are entitled to five messengers.

APPORTIONMENT.

The apportionment made by the committee, as explained in July *Monthly*, is not an assessment, it is not dictation, it is simply a suggestion. The apportionment is not always according to numbers or wealth, but rather according to the grace of liberality as manifested in the past. Neither the census-taker nor sheriff would have so listed you.

Please see what is the amount asked of your Association, then when your Association meets, have a committee appointed to apportion the whole amount among your churches, and let us try to do at least this much. It is not as much as \$2.00 per member for all missions in any Association, and in most of them very much less; in many it is not even 10 cts. per member.

Long Run is asked for Foreign \$7,000; Home, \$4,667; State, \$3,

500; District, \$3,500; State Sunday School and Colportage, \$1,700. Bethel and Elkhorn: Foreign, \$3,000; Home, \$2,000; State, \$1,500; District, \$1,500; Colportage, \$750. Daviess County and Warren: Foreign, \$1,500; Home, \$1,000; State, \$750; District, \$750; Colportage, \$375. Concord: Foreign, \$1,200; Home, \$800; State, \$600; District, \$600; Colportage, \$300. Nelson: Foreign, \$1,000; Home, \$667; State, \$500; District, \$500; Colportage, \$250. Shelby County: Foreign, \$800; Home, \$534; State, \$400; District, \$400; Colportage, \$200. Boone's Creek: Foreign, \$700; Home, \$467; State, \$350; District, \$350; Colportage, \$175. North Bend and South District: Foreign, \$600; Home, \$400; State, \$300; District, \$300; Colportage, \$150. Blood River, Bracken and Ohio Valley: Foreign, \$500; Home, \$335; State, \$250; District, \$250; Colportage, \$125. Severn's Valley, Simpson, West Union, Campbell County and Franklin: Foreign, \$400; Home, 267; State, \$200; District, \$200; Colportage, \$100. Russell's Creek, Sulphur Fork and Union: Foreign, \$350; Home, \$235; State, \$175; District, \$175; Colportage, \$88. Graves County and Liberty, Foreign: \$300; Home, \$200; State, \$150; District, \$150; Colportage, \$75; Central, Greenup, Little Bethel, Little River, West Kentucky, Whites Run and Mt. Zion: Foreign, \$250; Home \$167; State, \$125; District, \$125; Colportage, \$65. Gasper River, Goshen, Ohio River and Salem: Foreign, \$200; Home, \$135; State \$100; District, \$100; Colportage, \$50. Baptist, Clear Fork, Ohio County, South Kentucky and Tates Creek: Foreign, \$150; Home, \$100; State, \$75; District, \$75; Colportage, \$38. Blackford: Foreign, \$125; Home, \$85; State, \$65; District, \$65; Colportage, \$33. Barren River, Bay's Fork and East Union: Foreign, \$100; Home, \$67; State \$50; District, \$50; Colportage, \$25. Booneville, Lynn and Ten Mile: Foreign, \$60; Home, 40; State, \$30; District, \$30; Colportage, \$15. Crittenden, East Concord, East Lynn, Freedom, Laurel River, Owen and South Cumberland: Foreign, \$50; Home, \$35; State, \$25; District, \$25; Colportage, \$15. Cumberland River and Green River: Foreign, \$40; Home, \$27; State, \$20; District, \$20; Colportage, \$10; Irvine, North Concord, Rockcastle, Second North Concord, South Concord, Stockton's Valley, Three Forks and Upper Cumberland: Foreign, \$30; Home, \$20; State, \$15; District, \$15; Colportage, \$10. Edmundson: Foreign, \$25; Home, \$18; State, \$15; District, \$15; Colportage, \$5. Enterprise and Landmark: Foreign, \$15;

Home, \$10; State, \$8; District, \$8; Colportage, \$4. Goose Creek and Lynn Camp: Foreign, \$10; Home, \$7; State \$5; District, \$5; Colportage, \$3.

Now, understand, we do not even wish to dictate the division of your funds. Some give equally to all objects, some give only to one. But we do beg you to give according to the Saviour's command. In some Associations there are no District Missions; in that case, or where there is more than is needed for the District work, the General Association asks that such funds be given to State Missions.

You say, perhaps, that is a large increase. Yes; but we must increase, and we are compelled to look very largely to the better developed Associations and the aggressive pastors for the example in leading and the advancement in the work. Perhaps the amount looks rather large, but it is only \$1.75 per member for all mission work in any association, I think, except Long Run, and less than \$2 per member in that.

We received May 1902, \$650.95; May 1903, \$773.61; June 1902, \$461.59; June 1903, 1,236.82; July 1902, 1,136.98; July 1903, \$1,805.23. Total receipts for State Missions since May 1st has been \$1278.34. Disbursements for State Missions in May, \$851.95; for June, \$985.43. Total, \$1,837.38, and this means receipts for three months and disbursements for only two. Salaries are now due for July.

It is not rare gifts that make men happy. It is the common and simple and universal gifts; it is health, and the glance of sunshine in the morning; it is fresh air; it is the friend, the lover; it is the kindness that meets us on the journey; it may be only a word, a smile, a look . . . it is these and not any rarity of blessing that are God's gentle art of making happy.—G. H. Morrison.

REPORTS.

We do not want to be arbitrary or seemingly too exact, but the State Board requires each missionary to send report to the secretary before the salary can be paid. We furnish a blank report to each one every month, and yet many send partial, imperfect reports written on note paper or scraps, which reports are very troublesome to the bookkeeper. Don't be surprised if in the future all such reports are returned and salary withheld until proper report is made.

Bro Gates writes from Livingston that the building fund for their church is still growing slowly.

KENTUCKY MISSION MONTHLY

Published Monthly at 642 Fourth Avenue
Louisville, Ky.

J. G. BOW, Editor

PRICE TWENTY-FIVE CENTS PER YEAR.

Entered February 5, 1903, at Louisville, Ky.
as second-class matter, under Act of
Congress, March 3, 1879.

THE STATE BOARD OF MISSIONS
Meets at Norton Hall, Tuesday, Septem-
ber 1st, at 2 p. m.

J. M. WEAVER,..... President
B. A. DAWES,..... Recording Secretary
J. G. Bow,..... Corresponding Secretary

We want brief notes from the missionaries and the colporters for the KENTUCKY MISSION MONTHLY. Also from the Women's Missionary Societies. Let us keep the mission work before the people.

Bro. J. E. Wolford our mission pastor at Lancaster is assisting Bro. R. R. Noel at Silver Creek in a meeting. Bro. Noel is one of our most consecrated and efficient missionaries. He preaches at Silver Creek, Brodhead and Pittsburg.

Married on July 30th, at the Rossmore, Mr. William Robert Nance and Miss Frances Anna Barr, by J. G. Bow. Mr. Nance is a young merchant at Stanley, in Daviess county. Our best wishes go with them.

A large proportion of our subscriptions expire during the associational period. We earnestly ask all to renew, get your friends to subscribe and help us to extend the circulation of the paper. It is surely aiding very materially in increasing knowledge of, and interest in, the great work of Missions wherever it is read. The subscription is 25c per single copy for one year; 15c in clubs of ten or more.

TRIP NOTES.

In the last issue we gave an account of the trip to Livingston. The second Saturday and Sunday the Secretary was in Ohio County Association at West Providence. There was a very interesting meeting in progress. The jubilee anniversary of the church. Dr. J. D. Maddox was the historian, reminiscences were given by Revs. J. T. Casebier and D. J. K. Maddox. Sunday morning I preached a sermon on missions, and then preached at night in Rockport.

The 15th I was called to Cincinnati to see about the purchase of a lot for the church at Livingston; 16th went to Georgetown to the State meeting of the B. Y. P. U.; the 17th went to Jackson to look after our work there. Bro. J. M. Jones, our missionary supply, had his coat off unloading flooring for the church house; preached in Jackson Sunday morning and night. Monday went to Cannel City and had an appointment to preach at night, but a disciple of Uncle Alex. was there, in the school house, the only place for preaching, and in a service of an hour and a half he said a good deal about a righteous man. He asked me to talk, and in a talk of

about five minutes I told how Paul and Jesus taught men to be righteous. He was greatly offended. Came back to Jackson Tuesday and on to Lexington and home Wednesday. Then Sunday assisted in organizing a church at Hazelwood, one of our mission points. Monday night went to Franklin and to Simpson Association on 28th.

THE DEVIL'S WORK.

The devil's in town, as busy as a bee,
His horns and his hoofs you're unable to see,
But we know him for certain, I'll give you the cue,
He's doing a work only the devil would do.

He's bought out the mayor, he owns the police,
He runs the whole push with a little backshesh,
He's lord of the town, he's boss of the crew.
He's doing a work only the devil could do.

You've licensed his sin and he laughs in your face,
While he runs his saloons and dives of disgrace;
He jeers at the sorrow that pierces you through,
He's doing the work only the devil can do.

He's king of this city, and lordly he rules,
Over all the clans, both the wise and the fools,
And their motto to-day is "Give the devil his due,"
And so he is doing as only a devil will do.

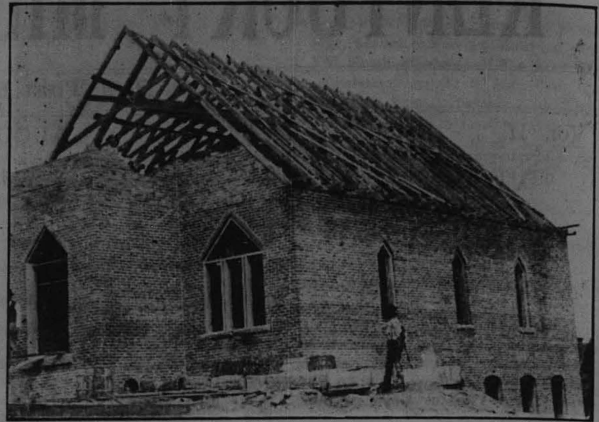
He pays all the salaries, and asks what you'd do,
Without the devil's business with its big revenue?
And yet for every dollar you get from his crew,
You have to pay ten—that's the devil's own due.

When sending mission money be sure to state exactly what it is for. If you want us to divide it among all missions, say so; if part or all is to be designated to special work, so state in your letter. Always remember that all money for Home Missions goes to Atlanta, Ga. State Missions and colportage funds only, are retained in Kentucky.

Brother Gates writes from Livingston: "Our work here is doing nicely at present. I have taken on another out-station known as 'Calvary Baptist Church.' It is about three miles north of town, and it an old organization, with ten active members and about twenty others that are scattered from 'Dan to Beersheba.' I have promised to go there the fourth Saturday night in each month.

My mission at Hazelpatch is very promising; I begin to believe we may be able under God to re-organize the Baptists there. They tell me that they have the best Sunday School in every respect 'they ever had.' Our building fund

Baptist Church at Jackson, Ky.



The above picture was taken July 20th. It shows the condition of the Baptist church building at that time.

The carpenters promised to complete the building in thirty days from the above date.

Our efforts to establish a Baptist church in Jackson have, in the past, proved futile. We had no suitable place in which to work and worship. The court house, with its associations of bloodshed and crime, was shunned by the people.

After the effort was made to build, and the citizens had subscribed liberally for the erection of the house, many of them were compelled to leave on account of the recent troubles in Jackson, and their promises cannot be fulfilled.

The matter was presented at the last meeting of the Board and many of the members promised to take collections at once in their respective churches for the completion of the house. Relying upon this we ordered the flooring, ceiling, windows and doors. It will require not less than \$700.00 to finish the building and we have less than \$100.00 in hand. Will the pastors and people come to our aid at once in this essential

is growing slowly, but it is growing just the same. We have not secured a lot yet, but have been offered 40x55 feet (centrally located) for \$200, which we think is very steep. But I am not surprised at it, everything here is extremely high, even the hills."

"What Baptists Believe, and Why They Believe It," is a booklet of sixty-four pages, written by J. G. Bow. Price, 10 cents per copy; \$5.00 per hundred. It is a plain statement of Bible teaching on the authority of the Scriptures, the Atonement, Salvation, Regeneration, Repentance, Faith, Justification, Sanctification, Preservation, the Church, Church Members and Officers, Baptism—What it is, Immersion, Washings in the New Testament, Believers' Baptism, Design of Baptism, Proper Administrator of Baptism, The Lord's Supper, Missions. This is the third edition of the booklet. Send orders to J. G. Bow, or Baptist Book Concern.

Credit is due to many who have labored for this house, to Rev. R. L. Baker and Pastor A. C. Dorris, and very much is due to Rev. J. M. Jones, the present supply under the State Board, but the success of the enterprise is due principally to an old citizen, Mr. William Combs. He is not a church member and never was trained to support churches and religious work, but he secured the lot and has given about half that has been given to the work. I believe him to be a converted man, and if so he ought to unite with the church. He is, in principle, a thorough Baptist. I think this enterprise has already cost him more than \$1,000.00. He is a typical mountain man, hospitable, kind and liberal. The church will cost about \$3,000.00. We did not deem it wise to build a cheaper house in Jackson. I do pray that the Lord may show the Baptists of Kentucky the need of a liberal Building Fund. In almost every other respect we have the advantage in the mountain work. Other denominations are building houses and entering much territory where we ought to hold the fields absolutely. Brethren, I plead in my Master's name. Help now.

J. G. Bow, Cor. Sec.

In answer to our appeal in the July issue of the *Monthly* we are in receipt of \$5 from the Adairville Sunday School for State Sunday School and Colportage, this school gave the first contribution last year and now through the promptness of Bro. T. R. Mason, the superintendent, heads the list again. Also Sugar Grove church responds through Bro. Norris Lashbrook with \$6.76. Morehead, per R. L. Baker, \$3.54. Thanks, brethren. Why not every Baptist Sunday School in the State give us one Sunday's collection for State Sunday School and Colportage. There is a big deficit in this fund, and our colporters are doing a fine work. If the superintendent or pastor will explain and present it, every school will gladly help. Many did help last year. Let us hear from them again and from all others.

RECEIPTS FOR JULY.

Long Run Association, per S. N. Mohler, from Oakdale church, for State Missions, \$20.80. W. H. Cornelius, from Jellico Creek church, for State Missions, \$2.50. Book Fund, per W. A. M. Wood, \$18.29. Book Fund, per I. M. Grimsley, \$17.09. Long Run Association, per J. K. Jarvis, from McFerran church, Louisville, for State Missions, \$7.39; Sunday School and Colportage, \$2.46; Foreign Missions, \$14.78; Home Missions, \$7.32; District Missions, \$2.46; Ministers' Aid Society, \$2.48, and Students' Fund, \$4.92. North Bend Association, per B. F. Swindler, State Missions, \$42.64; Sunday School and Colportage, \$42.64; Foreign Missions, \$44.64; Home Missions, \$42.64. Long Run Association, per J. G. Dobbins, from Eight Mile church, for State Missions, \$2.61. Long Run Association, per C. M. Haddaway, from Twenty-sixth and Market-street church, for State Missions, \$13; Sunday School and Colportage, \$13; Foreign Missions, \$13, and Home Missions, \$13. Elkhorn Association, per Malcolm Thompson, Great Crossings church, Foreign Missions, \$2. Fifth Street church, Lexington, for Home Missions, \$18.52. Mt. Freedom church, for Foreign Missions, \$6.25. Ladies of Hillsboro, for Missions \$25; Miss Shouse's Sunday School class, 50c, Home Missions, Upper Street church, Lexington, \$22.60. Nicholasville church, \$8.07; Providence church \$22.50. Midway church, for Ministerial education, \$9.18, and Orphans' Home, \$12.23. East Hickman church, for Ministers' Aid Society, \$10.70. Upper Street church, Lexington, for Ministers' Aid Society, \$2. South District Association, per T. H. Coleman, Burgin church, \$7.54 for State Missions. Doctor's Fork church, \$2.54 for Foreign Missions, and \$2.54 for Home Missions. Long Run Association, per A. M. Ross, from Thirty-sixth and Grand Avenue church, \$2 for Foreign Missions, and \$1.57 for District Missions. Tates Creek Association, per R. R. Noel, from Silver Creek church, for Sunday School and Colportage, \$2. Bethel Association, per J. F. Garnett, Hopkinsville church, for State Missions, \$14.57; Sunday School and Colportage \$3.65; Foreign Missions, \$171.86, and Home Missions, \$21.87. Ebenezer church, for Foreign Missions, \$2.50. Central Association, per J. A. Boulware, from B. O. Durrett of Lebanon church, \$5 for Church Building Fund. Long Run Association, per Miss Ella Compton for Livingston Church Building, \$1. Book Fund, per M. L. Blakenship, \$43.10. Enterprise Association, per J. C. Kazee, from Card church, for State Missions, \$1.55. Booneville Association, per Jas. Roberts, from Riverside church, for State Missions, 50c, Sunday School and Colportage, 25c; Foreign Missions, 50c. Long Run Association, per Theo. Harris class, Chestnut Street church, for Church Building Fund, \$11.01. Long Run Association, per I. T.

Woodson, for State Missions, \$37.85; Sunday School and Colportage, \$18.92; Foreign Missions, \$37.86; Home Missions, 37.85 and Church Building Fund \$5. Concord Association, per T. H. North, from New Liberty Baptist church for State Missions, \$50. Simpson Association, per J. H. Covington, for State Missions, \$28.57; Sunday School and Colportage, \$14.28; Foreign Missions, \$28.58 and Home Missions, \$28.57. Shelby County Association, per John T. Middleton, for State Missions, \$31.87; Sunday School and Colportage, \$4.38; Foreign Missions, \$21.77; Home Missions, \$42.53. The above was contributed as follows: Buck Creek church, \$18.25; Shelbyville, \$12.45, Clay Village church, State Missions, \$23.10; Clay Village Missionary Society to Home Missions, \$17; Bagdad to Foreign Missions, \$13; and Buffalo Lick, Home Missions, \$16.75. Bracken Association, per Geo. W. Baird, from Mt. Sterling church for State Missions, \$52.25. Long Run Association, Walnut Street church, per J. G. Bow, for Church Building Fund, \$12. Long Run Association, per T. E. Cannedy, for Ormsby Avenue church, 50c. Long Run Association, Walnut Street church per T. T. Eaton, for Church Building Fund, \$10. Mt. Zion Association, per E. R. White, from Corbin church, \$2.75 and Sunday School, 62c for Foreign Missions; W. M. U., \$2.50. Ohio River Association, per J. S. Henry for State Missions, \$14.28; Sunday School and Colportage, \$7.14; Foreign Missions, \$14.30, and Home Missions, \$14.28. North Bend Association, Ludlow church, per A. L. Vickers, for Church Building Fund at Jackson, \$13.20. Sulphur Fork Association, La-Grange church, per Mrs. A. T. Ladd, for Jackson church building, \$30. Campbell County Association, Newport church, per C. M. Thompson, State Missions, \$9.94; Sunday School and Colportage, \$4.97; Foreign Missions, \$9.95; Home Missions, \$9.94. Bethel Association, per T. H. Baird, from Adairville for Sunday School and Colportage, \$5. Daviess County Association, Sugar Grove Sunday School, per Norris Lashbrook, for State Sunday School and Colportage, \$6.76. South Cumberland River Association, Stubenville church, per Geo. E. Baker, State Missions, \$2.75. Salem church, Foreign Missions, \$5. South Kentucky Association, Burnside church, per Geo. E. Baker, State Missions, \$1.03; Foreign Missions, \$1.03. Bracken Association, Morehead church, for State Sunday School and Colportage, \$3.54. Long Run Association, Broadway church, per T. J. Humphreys, State Missions, \$7.0. Elkhorn Association, per Malcom Thompson, for State Missions, \$350.10. Total for July, \$1,805.23.

Ludlow church gave last year to the Church Building Fund, and sends \$13.20 for the building at Jackson, notwithstanding Ludlow has a large debt on her own building which is gradually being reduced. The church and pastor deserve special honor.

Southern Railway **Boys' Station**

BEST LINE TO

St. Louis

TWO TRAINS DAILY THROUGH WITHOUT CHANGE

TICKET OFFICES

232 FOURTH AVENUE AND 7th St. (UNION) DEPOT,

LOUISVILLE, - - - - - KY.

M. WOLF & SONS

Wholesale and Retail GROCERS

If you are in the market for good Groceries at Rock Bottom Prices, give us a Trial Order. We will surely please you. Out of town orders a specialty, as we ship to all R. R. Stations. Write for prices, it will pay you. Our Premium Brand Flour the best made, at \$3.75 is a trade winner.

Cor. 10th and Market Sts. Established 1865 LOUISVILLE, KY.

Illinois Central

The only line running through Sleepers from Louisville to

Los Angeles and San Francisco without any change

SHORTEST LINE TO NEW ORLEANS

CITY TICKET OFFICE

S. E. Cor. 4th and Market Sts. LOUISVILLE, KY.

CALLING CARDS

To any address in the United States, postage prepaid.

100 Finest Wedding Bristol 75c
100 on Good Bristol 50c

The Western Printing Company

642 Fourth Avenue LOUISVILLE, KENTUCKY

BUSINESS COLLEGE

The Great Business Training School of Louisville

offers the latest and best methods, and the most complete course of study in

Bookkeeping

Penmanship, Shorthand, Typewriting and other branches pertaining to a

BUSINESS EDUCATION

Able and experienced teachers. School open the entire year. Students may enter at any time. Elegant catalogue free.

E. J. WRIGHT, President, N. E. Cor. 2d and Walnut, Louisville, Ky.

The Louisville and Nashville Railroad

HOMESEEKERS' EXCURSION

AND ONE-WAY SETTLERS RATES

On the first and third Tuesday of each month, January, 1903, to April, 1903, inclusive, this Company will have on sale at Cincinnati, Louisville, Owensboro, Henderson, Evansville, St. Louis, and principal stations between Evansville and St. Louis, Homeseekers' Excursion Tickets and One-Way Settlers Tickets to points in Alabama, Florida, Georgia, Kentucky, Mississippi, North and South Carolina, Tennessee and Virginia. Rates for Homeseekers' tickets will be one fare plus \$2.00 for the round trip, tickets being limited for return twenty-one days from date of sale, with privilege of stopovers on going passage of fifteen days at any station on the Louisville and Nashville Railroad, and at principal stations on connecting lines. One-Way Settlers' Tickets will be sold at one-half the regular one-way fare, plus \$2.00, and are good for one way only. For further information apply to any representative or address

C. L. STONE, General Passenger Agent Louisville, Ky.

The Wellington No. 2



The Unexcelled Typewriter

We believe this machine is the equal of any machine in the market. We have used one in our office for more than a year and are well pleased with it. PERMANENT ALIGNMENT, VISIBLE WRITING, MINIMIZED KEY BOARD, SIMPLICITY, DURABILITY, PORTABILITY, are the features of excellence of this machine. Price \$60.00. It was chosen by us after examining all the kinds of machines within reach.

Write to J. G. BOW, Special Agent, Box 504, Louisville, Ky. FREDERICK DIEHL, Gen. Agt., 210 W. Market St. If you write Mr. Diehl be sure to mention this paper.—Ed.

3 NEW BOOKS

Sin, Salvation and Service
Their Relation and Interdependence

Lectures delivered to South Western University, Ouachita College and Arkansas State Ministers' Meetings and published at their request.

* * * 112 pp.....25c
Love the Greatest, 84 pp.....20c
After Death—Where and What?.....50c
Cloth, 153 pp. 95c

All sent postpaid for 60c. Address

J. B. MOODY
PEWEE VALLEY, KY.

What Some Have Said.

The chapter on "Sin" is the strongest array of reason, logic and Scripture on the subject that I have seen at all.—W. T. Amis, Hot Springs, Ark.

It is able, thorough, deep, discriminating, and frightening. But it preaches the truth.—*American Baptist Flag.*

It should have a circulation of millions of copies.—*Western Recorder.*

"Sin, Salvation and Service" has fallen into my hands, and I have read it as I never read any other book in my life, aside from the Word of God. I am amazed at the depth of thought and wide range of your wonderful comprehension of God's Word. The doctrine of salvation by Grace, which I have tried to understand more and more, is put with emphasis and clearness beyond any one I have ever read after. I shall read it and reread it in order to let it fairly soak into my mind and soul. O, that I could get deeper into this blessed doctrine. It is wonderful to me, and I am seeking to know it better, and when I read your books on the subject, I feel that I am but a babe in thought on this great subject, to say nothing of others in the Word. I feel to say to you, that I think you ought to enlarge the work and put it in more permanent form. It is a subject that the people are not properly taught on. They have the most outrageous ideas on that of any subject we teach, doubtless in our faith.—W. S. Roney, Pastor Immanuel Church, Little Rock, Ark.

My own soul has feasted and my heart has burned within me as I have read and fed upon the Scriptures, which you have so clearly opened and expounded. "Love the Greatest" is certainly a convincing explanation of the superiority of love to all other gifts, both ordinary and extraordinary; but better than that it is a wonderfully clear, concise, compact setting forth of the great love, wherewith God loved poor, lost, rebellious sinners and the riches of grace in Christ Jesus freely given to the chosen of the Lord in their salvation. In "Sin, Salvation and Service" you show the depths and heinousness of Sin, expound the gracious and elective purposes of God in Salvation, and emphasize the right kind of Service, prompted solely by love to God, more clearly and connectedly than in any book, small or large, known to me.—J. Boyce Taylor.

Have you read "After Death—Where and What," by Dr. J. B. Moody, Pewee Valley, Ky? If not, then order a copy by next mail. It is by far the finest thing we ever read on the subject. Price 50 cents.—J. M. Bondy, in *American Baptist Flag.*

"Love the Greatest" is a remarkable sermon, a thorough and exhaustive treatise, on God's love. To read this book is to gain a larger, better view of the God who is love. Price 20 cents. But his greatest book is "After Death—Where and What?" "Oh, how the word of the Lord is made to speak out about the departed! The reader can almost see the loved ones over on the other shore as they rejoice in the presence of their Lord. If the Scriptures do not teach an intermediate state they do not teach anything; and since our friends have passed over, and we are soon to follow them, we ought to be interested in the study of this momentous question.—J. N. Hall.

From Dr. B. A. Dances, Pastor Highland Baptist Church, Louisville, Ky.

I have read with much pleasure and profit your book, "After Death—Where and What." I am in accord with its views of the intermediate state. You have given a very able and thorough discussion of that subject, and I am sure it will do great good.

From the great Commentator, Dr. Geo. W. Clark, of Hightown, N. J.:

I have read with much interest your book on After Death. * * * You have made the subject and the Scriptures bearing thereon, a careful study, and the sermon you print by request, abounds with eloquent and vivid passages. I trust your little volume may be helpful to many while waiting for the full disclosures after death.

From Dr. J. M. Weaver, Louisville, Ky.:

I have read with interest "After Death—Where and What," by Dr. J. B. Moody. I am sure that the positions taken are Scriptural. If men would read it much of the false doctrine held now would be given up. Many seem determined to believe that man goes immediately to heaven or hell at death. The intermediate place and state are as clearly taught in the Scriptures as heaven and hell, as is clearly shown in this book. I hope it will be read and thus establish the truth. For years I have taught this truth.

AGENCY FOR The Aetna Registry Co.

Offers the best system of Registration, combining Personal Identification, Registration and Recovery of Keys, and an Accident Insurance Policy for

\$1.000

in the Union Casualty and Surety Co. of St. Louis.

All this Protection furnished for
\$1.00 Per Year

ACCIDENT INSURANCE FOR
\$1000 costs \$1.00 per year; pays \$7.50 per week for five weeks.
\$1500 cost \$3 per year; pays \$15 per week for fifteen weeks.
\$3000 cost \$4 per year; pays \$15 for twenty-six weeks.
The principal sum is paid for accidental death.

Call on or Write to
S. H. BOW
642 Fourth Avenue, second floor
Louisville, Ky.

REV. M. L. BLANKENSHIP, colporter in East Union Association, reports \$52.95 on sale of books in twelve days. That is an average of over \$4.40 per day. Yet some people say you can't sell books. Well, some people can't.

Now is the time to subscribe for the Kentucky Mission Monthly. Send 25 cents in one or two cent stamps.

ITEMS OF INTEREST.

Traveling baths on one of the Russian railways are the latest provision for its employes' comfort in the outlying districts.

A CHAPEL FOR PATRONS



LEE E. CRALLE Funeral Director

S. W. Cor. Sixth and Chestnut Sts.
LOUISVILLE, KY.

Telephone Main 430.

REULING PHOTOGRAPHER

Best Work
Lowest Prices

810 WEST MARKET STREET
LOUISVILLE, KY.

Home Phone 5163.

1904-WORLD'S FAIR LINE-1904



Louisville, Henderson AND St. Louis Railway

MORNING and NIGHT trains between LOUISVILLE and ST. LOUIS. THREE TRAINS between LOUISVILLE, OWENSBORO, HENDERSON and EVANSVILLE, and they are all DAILY.

Elegant equipment on all trains. Parlor Cars on Day Trains. Pullman vestibuled Sleepers on Night Trains.

ASK US FOR RATES

To All Points in the West and Southwest.

D. J. IRWIN, E. M. WOMACK,
Gen. Pas. Agt. City Pas. Agt.
LOUISVILLE, KY.

In the Indian Territory 440,000 acres of coal lands are to be sold at auction and the proceeds divided among the Indians.

The income of the British post-office from money in envelopes having no or insufficient address is \$30,000 or \$35,000 a day.

During the nineteenth century 200 ships, numberless lives and over \$30,000,000 were lost in futile efforts to reach the North Pole.

The shrinkage of woolen goods is caused by the felting quality of the woolen fibres, each of which is possessed of beard or slanting saw teeth, which favor forward movement but forbid retreat.

BOOKS AND BIBLE

For Everyone

A CHOICE SELECTION
"The Man From Glengarry" is story of the East and the Great Northwest, very thrilling. 12mo cloth \$1.50.

Black Rock. A Tale of the Skirks. 210th thousand, cloth, \$1.25 and 25c.

A Sky Pilot. A Tale of the Foothills. 12mo, cloth. Illustrated by Louis Rhead, 110th thousand \$1.25.

Justice to the Jew. M. C. Peters. \$1.00.

A Lily of France. Caroline A. Water Mason. A scene laid in Holland and France in middle of 19th Century. Once you begin you must finish it. \$1.25.

Friendship. Hugh Black. Printed in two colors. 17th thousand 12mo, decorated cloth, gilt, boxed, \$1.25.

Winsome Womanhood. Margaret E. Sangster. Gift edition. Luminated pages and many engravings illustrated in Sepia, by W. Dyer. 8vo cloth, boxed, \$2.50.

Old Folks' Testament. Psalms, Large print, easily read. Bound in cloth. Illustrated. Just the book you want; very cheap. Only 50 cts.

From the Ball Room to the By-Ex-Dancing Master Faulkner. The strongest book yet written against dancing. Price 25 cts.

Marriage Certificates. Our special, 30c each. Price per dozen \$2.50. Then we have nice ones 5c and 10c each. Beautiful ones at 15c, 25c, 35c and 50c.

Teachers' Bible, \$1.25, \$1.75, \$2.00 and up, post-paid.
Family Bibles, \$1.25, \$2.25, \$3.00 and up.

A FEW SPECIALS.

OF INTEREST TO PREACHERS AND CHRISTIAN WORKERS.

Pastor's Companion. Cloth. Weddings and Funerals, 25 cts. Best Texts for Soul Winners. Vest-pocket size. Williams. 25 cts.

Pastor's Pocket Record, Stall. Complete and useful record; leather, 75 cts.

Pastor's Hand-Book. Evangelical Scriptural and Poetical Suggestions for Weddings, Funerals, other Official Duties. Cloth. Star Book for Ministers. Leather. Net \$1.00.

Vest Pocket Companion. Christian Workers. Torrey. 25 cts.

Private Devotion. Series of Prayers and Meditations. E. B. Moore. 20 cts.

Deaconship (Howell), 40c.
Pendleton's Church Manual.
Smith's Bible Dictionary.
Marked New Testament, net \$1.00.
Topical Text Book, net 30c; to Bring Men to Christ, Torrey, 75c; New Testament, with notes \$1.00.

Baptist Book Concern

Incorporated
LOUISVILLE, KY.

Authorized Agents
MOODY COLPORTAGE LIBRARY
When you think of Books, think of Moody.