

# Watchword for Year

“That Thy Way May Be Known upon Earth  
Thy Salvation among All Nations”

**G**OD, in Thy mercy hear our plea,  
Thou dauntless Prince of Peace;  
Grant that men may lay down their arms  
And this ruthless slaughter cease.  
And grant that men from the end of the world  
May come to know the worth  
Of life and love, and turn to Thee  
That Thy way may be known upon earth.

And Lord, as laborers together  
With Thee, the Prince of Peace,  
May we toil with zeal and fervor;  
May our labors never cease  
Till the world resounds with the tidings  
Through hill and valley and glen  
That Thy way is known upon earth,  
Thy salvation among all men!

—Mildred Sherrer Andrews, Fla.

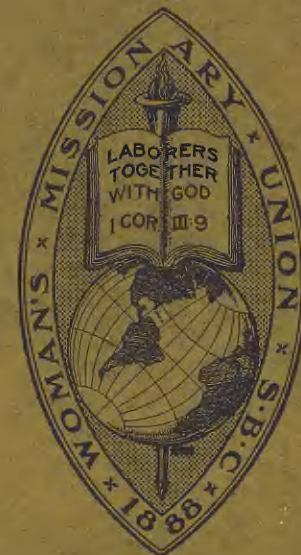
“No, no, it is not dying  
Heaven's citizen to be!”

**O**N the first Friday in December Mrs. Orvil W. Reid became a citizen of Heaven. For the past two years she had poured forth her youthful strength as a missionary along with her husband to the people of Mexico. Mr. Reid writes that during the fall she participated in many W.M.S. meetings of the Mexican women and was elected their associational vice-president. Since her departure had to be, it is a sacred coincidence that it took place at the close of the W.M.U. Day of Prayer around the World. Just as the prayers of Christians are ever in the presence of God, so now is the spirit of this devoted young missionary. In their loneliness the young husband and the little son have the tenderest sympathy of southern Baptists.

Hearts on two continents grieve also with Mrs. W. H. Carson of Nigeria because of the passing to Heaven of her father, his departure being almost coincident with that of Mrs. Reid. In devotion to her missionary task and in confidence that her father is now with the Heavenly Father, may Mrs. Carson be comforted. To Mrs. A. R. Gallimore, at home from south China, there came late in November the loss of her father. Also there goes forth tender sympathy to Mrs. A. C. Johnson, for many years the W.M.U. recording secretary: on the first Sunday in December Mr. Johnson went on to his Father's House.

# Golden Jubilee

1888-1938



SOUVENIR

OF THE

*Golden Jubilee*

WOMAN'S MISSIONARY UNION

AUXILIARY TO

SOUTHERN BAPTIST CONVENTION

*Commemorating Fifty Years  
of Missionary Service*

1888-1938



PROGRAMME

FOR

Woman's Meeting in Richmond, Va.

IN CONNECTION WITH

SOUTHERN BAPTIST CONVENTION.

BROAD ST. M. E. CHURCH.

PRESIDENT: MRS. THEODORE WHITFIELD, of Virginia.  
SECRETARY: MISS AGNES OSBORNE, of Kentucky.

FRIDAY, MAY 11TH, 1888.

10:00 A. M. OPENING EXERCISES. *Reading of Scripture and Prayer.*

10:15 A. M.-12:00 M. ORGANIZATION OF WOMAN'S WORK.

*Paper by Mrs. John Stout, of South Carolina, to be followed by free interchange of views by representatives of the several States, after which the whole subject to be referred to a Special Committee for report on Monday.*

12:00 M.-12:45 P. M. STATISTICAL REPORTS OF CENTRAL COMMITTEES.  
[Three to five minutes for each report.]

12:45 P. M.-1:00 P. M. SPECIAL OBLIGATION OF WOMAN TO SPREAD THE GOSPEL.

*Paper by Miss Alice Armstrong, of Maryland.*

MONDAY, MAY 14TH, 1888.

10:00 A. M. OPENING EXERCISES.

10:15 A. M. REPORT OF COMMITTEE ON ORGANIZATION.

11:15 A. M. WORDS FROM MISSIONARY LADIES PRESENT—*Mrs. Graves, of Canton, China; Mrs. Eager, of Rome, Italy, and perhaps others.*



*Broad St. M. E. Church, South  
(Erected 1859)*

Here representative southern Baptist women met May 11-14, 1888  
and organized the Executive Committee of  
Woman's Mission Societies, Auxiliary to Southern Baptist Convention  
which became  
Woman's Missionary Union, Auxiliary to  
Southern Baptist Convention



*Basement Room of Broad Street M. E. Church in which Organization Meeting of W. M. U. Was Held, May 11-14, 1888*

MRS. THEODORE WHITFIELD, Va., who presided (inset at right)  
 MRS. W. E. HATCHER, Va., who gave the welcome (inset at left)



Mrs. M. D. Early  
Arkansas

Mrs. W. D. Chipley  
Florida

Mrs. Stainback Wilson  
Georgia

Miss Eliza S. Broadus  
Kentucky

Miss Minerva Alfred  
Louisiana

Mrs. A. J. Rowland  
Maryland

Mrs. S. Y. Pitts  
Missouri

Mrs. Anson Nelson  
Tennessee

*Vice Presidents from States Elected May, 1888*

*Other Vice Presidents from States Whose Pictures Could Not Be Obtained*

MRS. M. A. HEWITT, South Carolina    MRS. A. C. ARDREY, Texas

## *Our Heritage*

STANDING at its half-century Woman's Missionary Union looks back over the highway of fifty years to rejoice gratefully in the Lord's leadership of the organized activity of women and young people in southern Baptist missionary endeavor. A priceless heritage is bequeathed to this generation by the pioneers in whose hearts were the highways of Zion leading out to a world waiting for the message of life in Christ Jesus. Timidly yet in faith a few women had met together to pray regularly for Ann Hasseltine Judson and her valiant comrades; encouraged by the vigorous sacrifice of Luther Rice, others later desired to form female societies. Subsequently the secretaries of Foreign and Home Mission Boards had suggested state central committees to integrate their scattered efforts.

So far as is known the first separate meeting of southern Baptist women was held in Baltimore, Maryland, in 1868. During the Southern Baptist Convention there, Mrs. Ann J. Graves called the women to the basement of the church to pray for China. From then until 1888 there were frequently such serious groups of women, listening to the women missionaries speak, praying, writing on the earnest tablets of their hearts missionary needs to relate to the women who had not accompanied their husbands to the Southern Baptist Convention sessions. "One blazing soul sets another on fire"; by 1888 southern Baptist women were zealous missionary enthusiasts moved by a passion of prayer and yearning for a lost world. Modestly yet firm in their loyalty to Christ's world cause, they heeded the encouragement of such denominational leaders as Dr. F. M. Ellis, Dr. John Stout, Dr. H. A. Tupper, Dr. I. T. Tichenor, rather than the opposing voices of some who did not see the triumphant activities of missionary organizations leading women and young people along an avenue of royal service for Him who endowed women with particular talents for His services. By 1888 they knew that to take more time to consider the matter of organization was but to lose time. They looked to their marching orders, they realized that women would be accountable for

any failure to do in the best and most efficient way all that they could for the Kingdom. Prayerfully, delegates from ten states voted to organize.

Steadfastly, not swerving from their prime mission purpose, devoted personalities poured out in unstinted devotion have accumulated and passed to us in our Golden Jubilee a heritage of prayer, of missionary zeal and intelligence, of radiant achievement, of sacrificial stewardship which is priceless. But in treasured memories wrought of faithful missionary tenacity and jewelled with prayer-directed planning our inheritance becomes inspiration to a future which will emulate their courage in the Lord, fulfilling their visions of women, children, and young people participating through their churches in the whole scope of southern Baptist mission.



MRS. ANN J. GRAVES

## *Down the Golden Years*

- 1888—Organization of Woman's Missionary Union, May 14th, Richmond, Virginia  
 First Christmas Offering for Foreign Missions
- 1895—Self-Denial Offering for Home Missions
- 1896—Sunbeam Bands transferred to Woman's Missionary Union
- 1901—Vice Presidents of States become members of the Executive Committee
- 1904—Gift of \$10,000 for "Margaret Home" for missionaries' children
- 1906—Literature Department transferred to Union by the Maryland Union Association  
 Week of Prayer for State Missions recommended
- 1907—Training School at Louisville, Kentucky, adopted by W.M.U.; Mrs. Maud R. McLure elected principal  
 Young Woman's Auxiliary name adopted  
 Publication of "Our Mission Fields," a quarterly  
 Mission Study Classes recommended
- 1908—Calendar of Prayer instituted  
 Royal Ambassador Chapters organized  
 Brazil organized Woman's Missionary Union
- 1909—The name "Personal Service" applied to personal ministry
- 1910—China organized Woman's Missionary Union (Soo-Sung-Sih)
- 1911—Standard of Excellence adopted
- 1913—Jubilate Celebration—Twenty-fifth Anniversary  
 Girls' Auxiliary name adopted  
 "In Royal Service" published  
 Argentina organized Woman's Missionary Union
- 1914—"Our Mission Fields" re-named "Royal Service" and published monthly
- 1917-1918—Erection of new building for W.M.U. Training School
- 1918—Circle Plan adopted  
 Mexico organized Woman's Missionary Union
- 1919—Nigeria, Africa, organized Woman's Missionary Union  
 Christmas Offering named "Lottie Moon Christmas Offering for Foreign Missions"
- 1920—Japan organized Woman's Missionary Union
- 1921—W.M.U. Headquarters moved to Birmingham, Alabama
- 1922—"World Comrades" published  
 Self-Denial Offering re-named "Thank Offering"
- 1923—Southwide Y.W.A. Camp at Ridgecrest  
 Chile organized Woman's Missionary Union  
 Grace McBride Y.W.A. organized
- 1926—Stewardship and tithing plans enlarged
- 1928—Ruby Anniversary Celebration  
 Roumania organized Woman's Missionary Union
- 1929—"The Window of Y.W.A." published
- 1930—Southwide Departmental Chairmen appointed  
 River Plate Republics organized Woman's Missionary Union
- 1931—Day of Prayer around the World
- 1933—Thank Offering re-named "Annie W. Armstrong Offering for Home Missions"  
 Italy organized Woman's Missionary Union
- 1936—All-China Woman's Missionary Union organized, Mrs. F. Y. O. Ling, Chairman
- 1938—Jubilee Celebration, Richmond, Virginia

MISS ANNIE ARMSTRONG (1891)—What has been done for the glory of God will be steadfast as the stars.

(1889)—Let our motto, "Forward," be blazoned upon our banners not alone for dress parade . . . but may it prove the daily and hourly motive for the individual.

MISS MCINTOSH (1892)—Because it is so much easier to stand at the helm and urge others on to greater efforts and larger gifts, we ought all the more carefully to watch the spirit and tenor of our own lives.

(1891)—Gather missionary facts, store them away in your hearts, let them feed the flame of your zeal.

MISS HECK (1893)—Teach that child to think God's thoughts for the nations, ere yet the clash of nations dull his ear to the calling Father's voice.

MISS ARMSTRONG (1893)—America must belong to King Immanuel if we would have a base of operation broad enough to bring the world to Christ.

MRS. ABBY MANLY GWATHMEY (1895)—Our Savior needs human hearts and hands to carry on His work.

MISS ARMSTRONG (1897)—Christian missions . . . being a divine plan has no weak human elements. Proceeding from the omnipotent, omniscient One it bears the impress of all wisdom and the promise of all power.

(1896)—We are living and doing today: the influence of our living and doing will be co-extensive with eternity.

(1897)—Would that we could realize that the success of missions and our prayers are linked together.

MISS HECK (1898)—We ought not only to work, to pray, but to think. Am I not right in saying that we are often too busy with the details to take in the longer, larger views which at once lift up a lofty standard and point the way to reach it?

(1899)—A society whose membership is not growing in personal grace may well doubt its usefulness.

(1909)—Have an open mind and a progressive outlook and try both old and new on the keenest edge of our clearest judgment . . . to fit the instrument to the accomplishment.

(1912)—I always put money last; any regular worthy giving must come last, must grow out of conviction, long training, established habit, life's controlling motive.

MRS. CHARLES A. STAKELY (1902)—We should not be content to have the children grow up without a knowledge of the principles for which we as Baptists stand, or without a share with us in evangelizing the world.

MRS. JOHN A. BARKER (1904)—To know that He has put the seal of His approval upon any work makes that work forever worthy of our best effort.

MISS HECK (1908)—I call you to . . . a definite re-dedication of our organization and of ourselves to the high purposes of the Union—not to the Union, note you, but to its end and aim.

MISS EDITH C. CRANE (1909)—While numbers indicate a healthy growth, we are far more interested in whether the auxiliaries are in any real way bringing the lives of our girls into contact with the work that God asks us to do.

MISS KATHLEEN MALLORY (1913)—Above everything else we long to realize more and more that the Sun of Righteousness awaiteth the day when He shall shine upon all nations.

(1916)—A robe of white has been the conscious absence of our faithful leader, Miss Fannie E. S. Heck who on August 25, (1915) entered the promised land where till the day break she waiteth for us. Even so is she—"Safe home, safe home."

MRS. W. C. JAMES (1922)—Our prayer program is like a tall lightship that lights our own ways, shows others the course and lights the way for those who go out to the far parts of the world.

(1917)—If Christians are to arrest missionary activities until war is blotted out how long then shall the church deny her Lord the obedience He demands to the Great Commission?

MISS MALLORY (1917)—May His Holy Spirit constrain us to search our own hearts until His image can be reflected in our own lives and through us in the achievements . . . of the Union.

MRS. JAMES (1925)—I know of but one thing that can cause us to fail and that is to lose the vision of the Savior. I plead with you that before the Union, in the Union and above the Union, you place the Savior, the Savior of the world.

MRS. COX (1927)—The goal of all true progress is the establishment of the Kingdom of God in the human heart. The most extensive, comprehensive and resplendent challenge of life is to share this magnificent, triumphant task.

(1929)—In our mission vision there is no near and no far, only one great world of eternal souls to be rescued and saved through the only Christ.

MISS MALLORY (1926)—Whatever has been really worth while in the year's work has been but a reflection of the True Light and whatever has been accurate and stabilizing with influence has been so because of the gentle yet unerring Heavenly Hand.

(1933)—Organizations are combined personalities.

(1933)—In the giving out of one's life for the Kingdom of God there develops fruit, within which is the "good seed" for multiplied usefulness.

MRS. F. W. ARMSTRONG (1937)—It is a solemn responsibility to face our todays realizing that our love and labor in turn become a heritage to those who follow after us . . . A good heritage is a great incentive to high living.

(1937)—The ideal of missionary training of young people . . . is no extra activity . . . but is fundamental in the purpose of our organization.

MISS JULIETTE MATHER (1937)—In seeking pearls for adornment divers risk great hazards, can we not find more women ready to plunge into the joys as well as difficulties of leadership in missionary education, women who will give constant, consistent service in His Name?

(1925)—Our young people in their days of prayer have been girdling the world in their prayer interests moment by moment and in answer to their prayers will come that growing consciousness of brotherhood among nations.

(1931)—Quick "hot iron bends not cold;" quick our young people's interests must be shaped to match the King's, to mould the Kingdom.

(1937)—Some people skip over numerical tables in a book as they scan it, but if behind the figures one visualizes boys and girls and young women the numbers become alive with keenest interest.

## *As I Have Seen W. M. U.*

I WAS a student in Richmond in 1888 and heard the discussion in the Convention on authorizing and adopting the Union as Auxiliary to the Convention. Through all the fifty years of its existence I have seen its work and influence with unfailing appreciation. I had the honor of presenting the annual report of W.M.U. when on the twenty-fifth anniversary the Convention for the first time accepted the report directly as of an autonomous organ of the Convention.

I am thinking now of the immeasurable educational service in the interest of missions; of the hundreds of thousands who through the years have learned through the agencies and the consecrated activities of W.M.U. of the world-wide meaning of "the Gospel of the glory of the blessed God," and of the world-wide reach of the work of southern Baptists. From the little children of Sunbeam years, through the Royal Ambassador and Girls' Auxiliary days, into the idealistic aspirations of the Y.W.A. years, and on into the decades of maturity and power of womanhood, W.M.U. has been the supreme educational agency of a multiplying denomination in the curriculum of the Kingdom of Heaven for the people in our churches. Much of the intelligence and interest of our men, and of not a few ministers, derives from their enlistment by the women in their various means and methods.

I am thinking of the Training School, nurtured by the W.M.U. through a third of a century, out of which have gone to the ends of the earth, and into all our states more than a thousand trained missionary leaders and hundreds to bear saving witness to tens of thousands who had not known the redeeming Savior.

I think of the millions of dollars poured directly into the treasuries of our mission boards out of the generous stewardship and sacrifice of the women in this Heaven-born organization; and of the millions more which have come for the progress of the Gospel because of the influence of the women in their churches.

Climax of all, I am thinking of that innumerable company, some of whom sing their praises in the heavenly throngs today because the hands of W.M.U. opened for them the gates of "the City which hath foundations," and others of whom are now "pressing on the upward way" while shedding the light of their faith and love and lives in the darkness of paganism and Catholicism. And in this procession I see increasing companies of oncoming pilgrims of light, pilgrims of the light which shines in the face of Jesus Christ Who beams glad welcome to the company of the redeemed coming ever on to praise Him for the word of His grace which came to save them, through the loyal love of W.M.U.

How many thousands of Christian homes, how many hundreds of Christian schools, how many changed communities lighten the lands afar, and strengthen the homeland because of the faith and faithfulness of the Lord's women.

*W. O. Casin*

## Laborers Together



MISS KATHLEEN MALLORY  
W.M.U. Executive  
Secretary

The general watchword of Woman's Missionary Union is: "Laborers Together with God"—*I Cor.* 3:9. Each year a different aspect of this partnership with God is expressed in its selected annual watchword. Eminently appropriate was the one chosen by W.M.U. pioneers in 1888: "Go Forward". A quarter of a century later, autographing "In Royal Service" Miss Heck quoted (*Psalms* 84:7) "They go from strength to strength". Was she recording history, casting a challenge or proclaiming a prophecy? All three!

Commencing in 1888 with only 1206 women's societies and children's bands the Union kept encouraging the organization of new societies, accepting from Dr. George Braxton Taylor and the Foreign Mission Board in 1896 all responsibility for Sunbeam Bands. In 1907 the meaningful name Young Woman's Auxiliary was selected for the organizations already busy with the missionary development of young women in southern Baptist churches. In 1908 the plans for Royal Ambassador Chapters for junior and intermediate boys were inaugurated. Very early a definite approach to college young women was made by Woman's Missionary Union culminating in 1910 in special Y.W.A. plans to increase their missionary knowledge.

Strength was shown when in 1904 a woman's gift of \$10,000 made possible the purchase of the Margaret Home, for years loyally supported by Woman's Missionary Union in its inherent purpose to "stand by" the missionaries of the Southern Baptist Convention. Further proof of this purpose was given in 1907 when the Union undertook the support of the Training School in Louisville, Ky. Another evidence of increasing strength was the publication that same year of a quarterly magazine, "Our Mission Fields".

History likewise shows that the Union has gone forward in its announced purpose to "secure the earnest and systematic cooperation of women and children in collecting and raising money for missions". At the 1888 meeting the treasurer reported \$7000 for home missions and \$15,000 for foreign missions; in gratitude the Union records total gifts through fifty years of \$53,233,101.15 to denominational causes other than local. If such statistics could speak, they might well explain that such a victory was preceded by many a sacrifice, many a far-visions investment. For instance: in the summer of 1888 the Union's first corresponding secretary, Miss Annie W. Armstrong, opened her heart and worked with her keen mind and tireless hands until the remotest society knew that an appeal had come from the selfless Miss Lottie Moon of north China for two missionaries to open work at Pingtu. What was the response? Three women missionaries went forth to China because of the 1888 Christmas Offering of Woman's Missionary Union, another blessed result being the decision to make it an annual Christmas custom in connection with a Week of Prayer for Foreign Missions. In 1895 the March Week of Prayer and Offering for Home Missions was started.

During the Union's first twenty-five years of growth the W.M.U. Literature Department was established, there were formulated fine methods for mission study classes, Standards of Excellence were set up, and through its personal service emphasis Woman's Missionary Union encouraged every member and all organizations to practice Christlike living in their own communities, the Good Will Center of the W.M.U. Training School being the recognized leader in such efforts to alleviate suffering and to win souls.

Entering the second quarter of a century the Union heartily participated in the Judson Centennial as promoted by the Foreign Mission Board and in the million dollar effort for the Church Building Loan Fund of the Home Mission Board which a W.M.U. member had started in 1899. On and on the work grew: the quarterly magazine became a monthly known as "Royal Service"; the children and older boys and girls were provided with "World Comrades"; and "The Window of Y.W.A." was started for the young women. Missionary activity of junior and intermediate girls was given new zest with the selection of the name Girls' Auxiliary, whose star ideals are cherished by more girls than are enlisted in any other denominational organization for girls throughout the world. The 1937 records show a truly magnificent total of 296,462 young people in their 23,171 graded W.M.U. organizations. Fostering all such are the 315,613 women in the 11,423 Women's Missionary Societies. One assurance of increasing strength is the fact that more of all the organizations in 1937 reached every point on their respective Standard of Excellence—5807 out of the 34,594 W.M.U. organizations being A-1.

Growth over the previous year was made both by the young people and the women in the past year's mission study classes (38,323) and in their observance of each of the three seasons of prayer. Is there thus found the secret for the \$135,364.42 of the 1937 Annie W. Armstrong Offering for Home Missions and the \$284,400.79 of the 1937 Lottie Moon Christmas Offering for Foreign Missions? Doubtless so, even as through prayer, study, enlistment and the stewardship of tithes and offerings came the 1937 total of \$2,357,003.42 W.M.U. cash contributions to denominational causes other than local. So earnestly do W.M.U. members recognize their stewardship that practically one out of every five members is a tither. "What more shall be said? For time will fail to tell" of the Margaret Fund; W.M.U. organizations in foreign fields; Grace McBride Y.W.A. devotion in many hospitals; the development of camps, houseparties and conclaves for our young people; the redemption of the promise of \$15,000,000 through the five-year plan of the Seventy-five Million Campaign; the marked advance made during the Ruby Anniversary; 18,287 memberships paid last year in the Baptist Hundred Thousand Club; the glow of this Golden Jubilee. Yes, history shows that Woman's Missionary Union accepted as a challenge "They go from strength to strength"; may it also be a prophecy as our Union continues "laborers together with God".



MISS JULIETTE MATHER  
Young People's Secretary



## *W. M. U. Headquarters*

HIGHLY appropriate as well as hospitable was the choice in 1888 of Baltimore, Md., as the headquarters city of the newly organized Woman's Missionary Union, especially as in that city lived the unsalaried corresponding secretary, Miss Annie W. Armstrong. Through the unfaltering kindness of Dr. H. M. Wharton a room was provided above the Baptist Book Store as promoted by him. Later on there were rented headquarters at four other locations, the last of these being at 301 North Charles Street, not far from 15 West Franklin Street which in 1909 became the property of the endowment fund of the W.M.U. Training School. Accordingly the headquarters of the Union were transferred to that attractive building in an elevated part of the city, about four blocks from the congested business section and in direct line with the up-town development of the city. The rent paid by the Union for its first floor and cellar storage added to that accruing from the rent of the second and third story rooms yielded 6 per cent interest on the investment of over \$10,000 of the endowment fund of the Training School. Thus for twelve years were W.M.U. headquarters maintained.

By 1920 it became apparent that the constituency desired that the Union's offices be moved to a city more centrally located in the territory of the Southern Baptist Convention. The annual meeting vote in 1921 was in favor of Birmingham, Ala., to which very centrally located metropolis the headquarters were moved in September of that year. The rooms chosen then have been retained from year to year, being well known to the denomination and particularly to W.M.U. members—1111 Comer Building.

Chiefly because of the large subscription lists of the Union's three magazines and the various activities of the Literature Department, it is necessary to rent ten rooms as well as an additional one during the very busy first quarter. To have such room space, crowded though it is, would be a financial strain on the budget of Woman's Missionary Union were it not for an annual gift from the Sunday School Board. These gifts since 1921 have practically covered the headquarters rent, a kindness for which Woman's Missionary Union is genuinely grateful.



COMMITTEE  
ROOM  
AT W.M.U.  
HEADQUARTERS,  
BIRMINGHAM



MRS. JAMES POLLARD



MRS. H. M. WHARTON

“LIKE MOTHER, LIKE DAUGHTER” is exquisitely applicable to the services rendered by Mrs. James Pollard and Mrs. H. M. Wharton as recording secretaries of Woman's Missionary Union. Mrs. Pollard, the Union's first recording secretary, served until 1892. Her daughter, Mrs. Wharton, was elected assistant recording secretary in 1913, becoming recording secretary in 1921. Thus they have recorded or helped record the Union's minutes for over half of its golden years. Mr. James Pollard, a Baltimore lawyer, gave wise counsel in the framing of the Union's constitution in 1888.



MRS. W. C. LOWNDES  
*Treasurer of Woman's Missionary Union*  
1895-1903; 1906-1934  
*Treasurer Emerita* 1903-1906

## W. M. U. Training School



MRS. MAUD REYNOLDS MCLURE  
Principal 1907-1923

The Golden Jubilee year of Woman's Missionary Union finds the W.M.U. Training School completing thirty-one years of Kingdom service. The School has gone a long way since that historic opening in October, 1907, when twenty young women enrolled, and that first Commencement in 1908 when three pioneers received their diplomas. Through the years the line has lengthened until 929 women have the honor of being numbered among the School's graduates. More than 2000 students have enjoyed the privileges for growth and development that the institution has to offer.

Viewed from this distance one wonders if this generation fully appreciates the contribution of the women who dared to launch out on such an undertaking. Nothing like it had been attempted in our denomination. What fearlessness was needed to begin a

new thing! Our Woman's Missionary Union then handled comparatively little money. What courage was needed to obligate themselves so heavily! Nobody surely knew what would come of it all. What faith was needed to believe it was of God! No architect was available to hand out accurate and workable plans. What heroism was needed to follow the gleam!

With the recent passing of Mrs. Maud R. McLure, the first principal and inspiring leader for sixteen years, the "Founders" have all entered that Better Country. These women—Miss Eliza Broadus, Mrs. S. E. Woody, Mrs. George B. Eager, Miss Fannie E. S. Heck, Mrs. Maud R. McLure—point the way. "Who follows in their train?"

Established as it was because would-be foreign missionaries needed specific training and sponsored as it has been by a missionary organization, it is not surprising that a major emphasis has been missionary. If you should take a trip around the world you would find Training School alumnae in at least eighteen different countries on every continent except Australia. A total of 191 have taken the light to the earth's dark places.



MISS CARRIE U. LITTLEJOHN  
Principal 1931-

In the homeland our denomination has used profitably a great many of our alumnae. In its days of prosperity the Home Mission Board employed at strategic places in the south and in Cuba many of our number; at present twelve are so employed.

Woman's Missionary Union has furthered its great work by using Training School products as corresponding secretaries, young people's secretaries, field workers, office secretaries and treasurers, and associational workers. At present forty are so employed in most of our states.

Through the years many young women have found a satisfactory place of service in the Sunday School and B.T.U. work on the field and in helping to produce the literature used in these two departments. According to available records eight are so employed at this time.

Doubtless the local church has used the larger number when total figures are considered. Today thirty-nine are employed as church secretaries and educational directors.

Space forbids enumerating alumnae in Good Will Centers, Baptist schools, orphanages, hospitals, student work, and general social work. Likewise it would be impossible to pay tribute to all the splendid volunteer work done by these fine women who have not been regularly employed in the religious field.

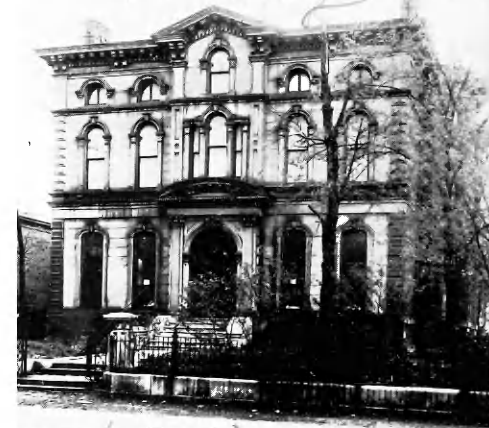
As we celebrate this year of Jubilee, thanking God for past achievements and looking hopefully to the future, we focus attention on the Training School. To this end Woman's Missionary Union has set herself the task of raising \$50,000, starting a fund for the ultimate moving of the School to the new site near "The Beeches," the home of the Southern Baptist Theological Seminary for the past twelve years. During the intervening years our students have been deprived of the close contact with that institution which at the beginning was a deciding factor in locating our School in Louisville.

In addition to regaining the advantages of coeducation and the stimulation of the Seminary atmosphere, the removal will take the School out of the crowded, noisy, downtown area to a beautiful suburban section more suited to an academic institution but will not remove it too far from the opportunities for practical mission service.

(The School has had four locations as the photographs at right show.)



1st Training School



2nd Training School



3rd Training School



4th Training School  
House Beautiful

## The Margaret Fund



MRS. MARGARET WALLER

Burdened missionaries, facing problems of educating their children, touched the heart of Mrs. Frank Chambers, and she lovingly made a gift of \$10,000 to Woman's Missionary Union. With this money a house in Greenville, South Carolina, was bought in 1905 and called the Margaret Home. The name Margaret was chosen by Mrs. Chambers in memory and appreciation of her mother, Mrs. Margaret Waller, her grandmother and her daughter. During the following eight years it was used by fifteen missionaries on furlough and forty children. This home was sold in 1913. Plans were begun for establishing a Margaret Fund to assist sons and daughters of regular missionaries of our Home and Foreign Boards, in securing college training.

In 1916 the first eight scholarships were granted. These 22 years 330 students have been aided by over \$300,000 given in scholarships. Greatly has God blessed our efforts, for now there are four different funds under the Margaret Fund.

The *Margaret Endowment Fund* (now \$55,500) was created by sale of the home. It was increased by a few large gifts and yearly small contributions from the states.

*Margaret Memorial Endowment* (\$6,000) was begun in 1930. This grew by finding those named "Margaret" and permitting their names to be enrolled in the Margaret Memorial Book by a gift of at least two dollars.

*Elizabeth Lowndes Scholarship Fund* (\$7,000) launched in 1934 was in honor of Mrs. W. C. Lowndes, treasurer of Woman's Missionary Union for almost 40 years. This scholarship is an additional award to a senior student whose record for three previous years has been most creditable and outstanding.

The *Emergency Fund* (\$4,000) has proved a real blessing in serving our missionaries in time of deep distress and sorrow.

The Margaret Fund has made a distinct contribution to world-wide missions. Many former students are now trained and active missionaries on foreign fields. Others are pastors, leaders, here in America. Most of them have brought honor to the cause.

The Margaret Fund was born of love. It has been energized by love, faith and prayer. A gift to it blesses the world. Won't you have a part in its enlargement?



MRS. FRANK BURNEY  
*Margaret Fund Chairman*  
1922 - 1938

## W. M. U. Literature Department



MISS ALICE ARMSTRONG

When it came to pass that the efforts of southern Baptist women in behalf of missions were fused into a general organization God gave many evidences of His favor. One such was an agency He had prepared to become an ally and handmaiden of the new Executive Committee. In 1886 there had been opened in Baltimore a Missionary Library and Reading Room which by 1888 was widely recognized as a storehouse of missionary information. Upon Miss Annie W. Armstrong fell most of the responsibility in this publishing venture. It was natural therefore that she should take her new duties, as corresponding secretary of the Executive Committee of Woman's Mission Societies into the "Mission Rooms" where she was accustomed to spend many hours. From this upper room flowed a

steady stream of prayer cards, leaflets and programs to inform and stabilize the missionary societies.

Gifted pen women in several states and many leading men of the denomination used their talents to provide convincing manuscripts for publication by the women. Would that all the names of all these could be written here in token of our gratitude for their quickening words! Outstanding among these early writers was Miss Alice Armstrong of facile pen, gifted imagination, devoted spirit. As "Ruth Allyn" and under her own name she wrote scores of stories and articles.

In 1906 the ally which had served W.M.U. so effectively that its separate identity was scarcely seen became literally a part of Woman's Missionary Union. By gift of the Mission Rooms' endowment the W.M.U. Literature Department was established. From 1906 until 1920 Mrs. W. R. Nimmo directed the Department with literary discrimination, zeal for the missionary cause and business ability. At her death two memorials of \$500 each were given in her name to the Home and Foreign Mission Boards for translation of literature to promote W.M.U. work in Cuba and China. A gift to help establish publication work for the Negro Baptist Woman's Auxiliary has been made for the past two years.

The Department continues as a handmaiden of the Union, supplying as changing times demand aids and devices besides the time-honored leaflet to quicken missionary work. Now, as in 1888, its aim is to be a ready ally of "the women that publish the tidings".



MISS ETHEL WINFIELD  
*Secretary of Literature Department*

## Royal Service

“**N**OTHING SUCCEEDS LIKE SUCCESS” is a helpful incentive provided humility holds at least one rein. Deeper than mere words can convey is the humility as well as the gratitude of “Royal Service” as it reflects upon its heritage. Is it untrue to history when including in that heritage the “Heathen Helper”, the “Baptist Basket” and kindred pioneer mission magazines published by southern Baptist women? Do its program pages each month perpetuate the struggle of the pioneer days to present program material through leaflets, state Baptist papers, the “Foreign Mission Journal” and “Our Home Field”? Whatever the answers to these questions may be, certainly “Royal Service” longs to promote increasingly the missionary purposes upheld by them.

A direct forerunner of “Royal Service” was the Union’s quarterly, “Our Mission Fields,” issued from July of 1906 through the same quarter of 1914. For several years it was a free publication, being sent in bulk to the state W.M.U. headquarters to be enveloped and mailed to the various organizations. Perennially its paper was green, being soft to the eyes and suggestive of growth in mission activities. To the editing of this quarterly Mrs. W. R. Nimmo gave the best of her cultured mind and devoted heart, even as she did for its successor, “Royal Service”, as its managing editor 1914-20 and then as editor of certain departments, notably the W.M.S. program and the Calendar of Prayer, until her death in 1927.

The decision to change from a quarterly to a monthly magazine was made in 1914 as a direct result of the Union’s Twenty-fifth Anniversary; the change in title seemed necessary because it was decided that the new periodical should discuss methods and other phases not embraced by “Our Mission Fields”. It is gratifying that the title chosen, “Royal Service,” was suggested by the Union’s history, “In Royal Service”.

As the years have come and gone the magazine has increased not only in number of pages but in subscription list. The latter was only 15,000 the first year. In its first decade it increased to 63,000; then the next decade to 73,700. The order for the May issue in this Golden Jubilee Year was 90,000. Carrying no advertisements, “Royal Service” depends solely upon the Women’s Missionary Societies and the favor of God whose Kingdom it exists to serve through definitely missionary programs, the Calendar of Prayer, stewardship articles, reviews of mission books, examples of soul-winning through personal service, reminders to foster the missionary organizations among the young people, current missionary facts, editorials that emphasize the immediate task in the light of W.M.U. history and goals.

## World Comrades and The Window of Y. W. A.

SINCE “World Comrades” began its friendly existence in 1922 and “The Window of Y.W.A.” opened in 1929 to help young women to look upon the fields, the printed pages of the two magazines, laid end to end, would more than circle the globe. Boys and girls in Royal Ambassador Chapters, Girls’ Auxiliaries and Sunbeam Bands have grown in world wide interest as they read “World Comrades.” Missionaries who serve on home and foreign fields today read “World Comrades” with zest and used its programs when in Girls’ Auxiliary. Young women of Y.W.A. have felt their hearts expand with glowing missionary passion reflected from its lines. Mechanically and personally these magazines of Woman’s Missionary Union are fulfilling their high purposes of girdling the world with friendliness and reaching far fields with love.

One of the editors of the “Missionary Review of the World” referred to the two magazines as “the best missionary literature for young people in the country”.

Woman’s Missionary Union has been glad to provide so economically the necessary material for profitably satisfying personal reading pleasures and for fascinating organization programs. Established by a small initial sum, the magazines each became quickly self-supporting and have weathered the stormy seas of depression without a trace of red in their balance sheets.

Missionaries have generously sent stories, up-to-the-minute facts and pictures; skilled program editors have rendered vital missionary service in planning for organization meetings, receiving but small monetary remuneration; W.M.U. officers, leaders, and friends have contributed manuscripts on request; artists have supplied cover designs and sketches; alert organizations in America and other lands have told with contagious enthusiasm of their missionary activities, so that the magazines have both appeared month after month, crowded with valuable missionary messages to quicken world interest. The Prayer Calendar is published in “World Comrades,” and appears in “The Window of Y.W.A.” accompanied by stimulating Bible reading suggestions. Stewardship considerations and instructive articles regarding general denominational activities are frequently included in each magazine.

“World Comrades” with 21,000 subscribers and “The Window of Y.W.A.” with 11,000 on its subscription list have become magazines of real usefulness in the Kingdom and will be increasingly so as more subscribers let these eager pages lead their thoughts and hearts—and even lives—to earnest Kingdom service.



*Presidents of Woman's Missionary Union*

MISS FANNIE E. S. HECK  
 1892 - 1894  
 1895 - 1899  
 1906 - 1915



Mrs. W. J. Cox  
 1925 - 1933



Mrs. W. C. James  
 1916 - 1925

Mrs. F. W. Armstrong  
 1933-



## Anniversaries

### The Jubilate—1913

Jubilate — Rejoice Ye



In her address to the twenty-fourth annual meeting of Woman's Missionary Union, the president, Miss Fannie E. S. Heck, recommended that a committee be appointed to present to the next session a "Twenty-fifth Anniversary Programme of such a nature as to call for the participation of all grades of Union societies". The committee consisted of Mrs. T. A. Hamilton, Ala.; Mrs. J. L. Hawkins, Ark.; Mrs. C. N. Chipman, D.C.; Mrs. N. C. Wamboldt, Fla.; Mrs. Maud R. McLure, Ky.; Mrs. H. M. Wharton, Md.; Mrs. A. J. Aven, Miss.; Miss Elizabeth Briggs, N.C.; Mrs. G. T. Veal, N.M.; Miss Sue Howell, Okla.; Mrs. J. D. Chapman, S.C.; Mrs. W. C. Golden, Tenn.; Mrs. A. F. Beddoe, Tex.; Mrs. W. C. James, Va., *Chairman*.

In her first annual report Miss Annie W. Armstrong said, "This report on a first year's effort in untried fields is a grateful record of fulfilled promise. And today our praises unite with the swelling chorus which is resounding through the aisles of the centuries".

With such a thought in mind "The Jubilate" was chosen as the name for the celebration of the Silver Anniversary of Woman's Missionary Union. Psalm 100 was selected as the *Hymn of Praise* for the year. The Jubilate was launched in a great celebration on the closing day of the twenty-fifth annual meeting in St. Louis, Mo. Programs for town, village and country churches were designed to set forth the four-fold purpose of the Jubilate: Historic, Personal Spiritual Uplift, Increased Gifts from that time forward, some definite Personal Service as a memorial of each Jubilate. The Jubilate gifts—over and above all apportionments—were applied to churches, hospitals and schools on foreign fields and to the Church Building Loan Fund in the homeland.

Upon request Miss Heck wrote the history of the Union "In Royal Service," which was the chief study book during the Jubilate. "Come Women Wide Proclaim," also by Miss Heck, was officially adopted as the Woman's Hymn. The design prepared by Miss Emma Whitfield of Virginia, daughter of Mrs. Theodore Whitfield who presided at the organization meeting in 1888, was adopted as the official seal of the Union.

When Miss Heck was reelected president, Mrs. T. P. Bell (*Miss M. E. McIntosh*) was asked to conduct her to the platform. Then with their first president and Miss Heck standing before them, hand in hand, Union forces faced the second quarter century of united effort as "Laborers together with God" with a "Prophecy of Growth" by Miss Heck held up before them.

Miss Kathleen Mallory in her annual report, her first as W.M.U. corresponding secretary, called to mind the words of Carlyle: "Out of eternity this new day is born". Accepting it as a gift from God the Union ventured forth into the "new day" under the valiant leadership of this new secretary. So faithful she and multitudes of others have been in their labors together even unto 1938, all can exclaim as did Miss Armstrong in her first report—"What hath God wrought!" and agree with her—"He is faithful that promised".

(Please see picture of Mrs. W. C. JAMES, Chairman of Jubilate Committee on page 24)

## The Ruby Anniversary



Not only in the annals of Woman's Missionary Union, but in that Great Book of Remembrance written by order of the King of kings, the Ruby Anniversary Celebration will ever be a glowing chapter.

### Launched

At the annual meeting of W.M.U. in Louisville, Kentucky, May 1927, the committee, previously appointed by the president, presented the following recommendations: That we take as our goals in

I. Enlistment: Forty thousand new members in existing organizations; forty per cent increase in the total number of W.M.U. organizations.

II. Gifts: Four million dollars as the total of all W.M.U. gifts for the calendar year of 1928, this amount being the value of four thousand one-carat perfect rubies; these gifts to be for any causes represented in our Cooperative Program.

These exceptionally high goals were adopted most enthusiastically, the entire audience joining hands in pledge of their loyalty as they accepted the clarion challenge, "Come and see my zeal for the Lord".

### The Working Out of the Plans

Our watchword for 1928 was: "Enlarge; Spare not; Lengthen; Strengthen" (*Isa. 54:2*). These injunctions were signally obeyed. The "spare not" seemed most appropriate as the blood-red ruby signifies sacrifice. "The Kingdom is Coming" was our soul-stirring hymn.

The symbol was the torch, the Hand of the Past passing on the life-giving flame to the Hand of the Present.

The "Intercessory League of Shut-Ins" was organized and proved a mighty force.

Each state and the southwide Union prepared a Book of Remembrance, preserving precious data for record and inspiration.

### The Results

The Union, as a whole, did not attain the goals, but 1928 is the peak year of the forty-nine in enlistment and in gifts. Sixteen states reached their quota as to new members; eleven states reached the forty per cent increase in new organizations; and nine states reached their financial goal. Five states were fully "victorious". The total gift was \$3,500,166.59.

### The Final Hour

In Memphis, at the annual meeting in 1929 was given one of the most elaborate and thrilling pageants ever presented by W.M.U., "The Torch". The eighth episode featured the accomplishments of the Ruby Anniversary. The five "victorious" states were crowned.

The results? We will not know until the King's big book is opened and He "makes up His jewels".



MRS. CARTER WRIGHT  
Chairman of Ruby Anniversary  
Committee

## The Golden Jubilee



MRS. GEORGE MCWILLIAMS  
Chairman of Golden Jubilee  
Committee

The worthiness of the plans and programs set forth in the Jubilate and Ruby Anniversary years can be judged, not by the satisfactory growth in numbers and gifts alone, made since the celebration of those important years, but in the missionary spirit found now in the members of Woman's Missionary Union. The success of the plans for the Golden Jubilee celebration can be anticipated by the closeness to which these plans are found to adhere to the purpose for which Woman's Missionary Union was organized—"To stimulate the missionary spirit and the grace of giving in the women and young people of the churches". The missionary spirit is the cause of growth of self, service and material gifts; the grace of giving is but the expression of the missionary spirit.

Effort is being made in every plan presented to place emphasis upon the necessity for being spiritually empowered for the task of promoting the Lord's program through the channels of the Woman's Missionary Union,

Auxiliary to the Southern Baptist Convention:

1—The Jubilee theme stresses spiritual power—"Ye shall hallow the fiftieth year—for it is a Jubilee; it shall be holy unto you;"

2—Plans for spiritual growth through self-searching questions, continuing in prayer and commitment of self were made and used during the months before the beginning of the Jubilee year;

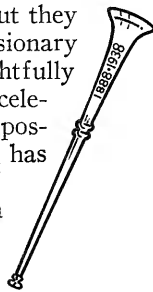
The Cooperative Program of southern Baptists is being emphasized:

1—The first financial plan was an intensive effort to reduce the debt on the Southern Baptist Convention Boards by seeking to obtain 50,000 debt-paying memberships during the years of 1936 and 1937;

2—All goals for the Jubilee year, with the exception of a special Jubilee gift of \$60,000, are the normal ten per cent increase in membership, in organizations and in total gifts, with emphasis upon "no loss of a single old organization or member during the year". This normal increase is presented as a goal with the hope that there will be no depressing drop after the Jubilee year is over, but that the spiritual impetus of the year given to all plans will result in a continuing growth during the succeeding years in numbers and gifts and in a deepening missionary spirit.

The plans of the Golden Jubilee year are not spectacular, but they are true to the purpose of the organization of Woman's Missionary Union, and, because they are true to this purpose, we may rightfully expect those who promote the plans for the Diamond Jubilee celebration to say, "They, too, contributed to the rich heritage we possess". To the women of 1963 we pass the golden trumpet that has proclaimed our fidelity to a great purpose. May its notes of praise linger and make sweet the glad chorus they will sing in their Jubilee year: "Come women, wide proclaim

Life through your Savior slain".



## Terms of Office in W. M. U. Service—1888-1938

|  |   |   |  |
|--|---|---|--|
| <p><b>President</b></p> <p>1888-1892<br/>Miss M. E. McIntosh.<br/>1892-1894; 1895-1899; 1906-1915<br/>Miss Fannie E. S. Heck<br/>1894-1895<br/>Mrs. Abby Manly Gwathmey<br/>1899-1903<br/>Mrs. Charles A. Stakely<br/>1903-1906<br/>Mrs. John A. Barker<br/>1916-1925<br/>Mrs. W. C. James<br/>1925-1933<br/>Mrs. W. J. Cox<br/>1933-<br/>Mrs. F. W. Armstrong</p> | <p><b>Corresponding Secretary</b></p> <p>1888-1906<br/>Miss Annie Armstrong<br/>1907-1912<br/>Miss Edith C. Crane<br/>1912-<br/>Miss Kathleen Mallory</p>   | <p><b>Young People's Secretary</b></p> <p>1916-1918<br/>Miss Mary Faison Dixon<br/>1921-<br/>Miss Juliette Mather</p>   | <p><b>Recording Secretary</b></p> <p>1888-1892<br/>Mrs. James Pollard<br/>1892-1895<br/>Mrs. F. M. Ellis<br/>1895-1902<br/>Miss Nellie Martien<br/>1902-1905<br/>Miss M. E. Wright<br/>1905-1921<br/>Mrs. A. C. Johnson<br/>1921-<br/>Mrs. H. M. Wharton</p> |
| <p><b>Assistant Recording Secretary</b></p> <p>1902-1905<br/>Miss Nellie Martien<br/>1905-1906<br/>Miss M. E. Wright<br/>1906-1913<br/>Mrs. F. C. Wallis<br/>1913-1921<br/>Mrs. H. M. Wharton<br/>1921-1922<br/>Mrs. Darby Brown<br/>1922-<br/>Mrs. Sumter Lea, Jr.</p>  | <p><b>Treasurer</b></p> <p>1888-1892<br/>Mrs. J. F. Pullen<br/>1892-1894<br/>Mrs. M. E. Oliver<br/>1894-1895<br/>Miss S. Tyler<br/>1895-1903; 1906-1934<br/>Mrs. W. C. Lowndes<br/>1903-1906<br/>Miss Ella V. Ricker<br/>1934-<br/>Mrs. W. J. Cox</p> | <p><b>Training School Principal</b></p> <p>1907-1923<br/>Mrs. Maud R. McLure<br/>1923-1925<br/>Miss Carrie U. Littlejohn<br/>(Acting Principal)<br/>1925-1930<br/>Mrs. Jamie Cree Bose<br/>1930-1931<br/>Miss Carrie U. Littlejohn<br/>(Acting Principal)<br/>1931-<br/>Miss Carrie U. Littlejohn</p> | <p><b>Margaret Fund Chairman</b></p> <p>1915-1922<br/>Mrs. J. R. Fizer<br/>1922-1938<br/>Mrs. Frank Burney</p>   |

## The W.M.U. Historical Exhibit

Arranged in a beautiful room adjoining the auditorium in the Mosque is the most interesting and helpful exhibit of pictures, diaramas, documents and relics of the early history of Woman's Missionary Union.

Representing the fifty years of W.M.U. growth are the ten tall candelabra with five candles each with panels back of them on which are written achievements of the years.

Two diaramas cover one end of the hall. One depicts in realistic way the organization meeting of Woman's Missionary Union in Broad Street Methodist Church May 11-14, 1888, the other the growth of the Union these fifty years.

Pictures of pioneer W.M.U. workers and beautiful Jubilee posters cover the walls. Some of these pictures are Miss Fannie E. S. Heck, Miss McIntosh, Miss Lottie Moon, Mrs. Maud R. McLure, Mrs. Sallie R. Ford and delegates at the Richmond meeting in 1888.

Among the many interesting documents and relics in the cases are: daguerreotype of Mrs. Ann J. Graves, 1888 publication—"Sketch and Constitution of Woman's Mission Societies"; early Executive Committee minutes, hand written; first issues of Royal Service, The Baptist Basket, The Heathen Helper, World Comrades, The Window of Y.W.A.; galley proof of book, "In Royal Service", with corrections in Miss Heck's handwriting; autographed copy of "In Royal Service"; certificate of \$20,000 Tichenor Memorial gift by Union to Church Building Loan Fund; Memoirs of Henrietta Hall Shuck, book, letters, jewelry of Henrietta Hall Shuck; wedding dress of the editor of the Baptist Basket, dresses and hats worn by early W.M.U. women to state organization meetings; sewing box and gold and black enamel bracelets of Mrs. W. D. Chipley; records of earliest college Y.W.A.'s., Sunbeam Bands, Royal Ambassador Chapters and missionary societies; sketch written by Miss Lula Whilden in her own hand, letters from Misses Annie Armstrong, Lottie Moon, scrapbook of early W.M.U. leaflets and records; first copies of early state papers; a black lace shawl presented by Mrs. James K. Polk, wife of the president of U. S., to Mrs. Anson Nelson, the first Tennessee vice president of the southern Union; a photograph of the original drawing of the Union's seal (*see illustration on page 26*). The design was the gift of Miss Emma Whitfield, whose mother presided over the organization in Richmond. The shape of the pin represents the double fish head, a symbol used in the early days of Christianity. It was the custom of the Christians to make the sign of the fish head when they met anyone whose attitude toward Christianity was unknown. A believer would recognize the sign and so be discovered as a friend. An enemy of Christianity would see no meaning in the sign and the believer would be safe from harm. This sign was used by the Christians because of the famous acrostic forming the Greek word for fish. The words whose initial letters made the acrostic were *Jesus Christ, Son of God, Savior*; they briefly but clearly described the character of Christ and His claim to the worship of the believers.

Around the border of the pin is: Woman's Missionary Union, S.B.C. 1888. In the center of the pin is the open Bible with the Union watchword engraved on it; the Bible rests upon a map of the world, and above the Bible is a flaming torch. All W.M.U. members should wear it as Baptists they certainly stand for the open Bible; as missionary societies they believe in taking the Bible to the whole world; and as Christians they know that Jesus Christ is the light of life.



MISS ANNIE W. ARMSTRONG

*Corresponding Secretary of Woman's Missionary Union, 1888-1906*

IN THE SPRING OF 1938 Mrs. Eugene Levering, president of Maryland W.M.U., went to visit Miss Armstrong. She who was once so busy in the Master's service now lies quietly in bed through the passing days but the loyalty of her heart is unchanged. Mrs. Levering began to speak of Woman's Missionary Union and its Jubilee.

"Miss Annie, would you like to send a message to the Union for its fiftieth year?" Without hesitation came the reply, "I hope they may grow every year stronger and better."

"Have you a Scripture verse to link with that message?" asked Mrs. Levering.

"Speak unto the children of Israel that they go forward," came promptly from the lips of the woman who had been so courageous in leadership.

"And now what would you like to say to the young women in Y.W.A.?"

The words came slowly but distinctly: "Grow in grace and in the knowledge of our Lord and Savior Jesus Christ."

Mrs. Levering mentioned next the Girls' Auxiliary and Miss Armstrong asked, "Do you think they know the two verses most often read and committed to memory?" Without waiting for a reply she continued, "For God so loved the world that He gave His only begotten Son that whosoever believeth on Him should not perish, but have eternal life. . . . The Lord is my shepherd."

Reminded of Royal Ambassador Chapters, Miss Armstrong quoted a challenge set down by Paul, "Be strong in the Lord and in the power of His might," and added with emphasis "I have found this verse to be true."

For the Sunbeams she chose again the Shepherd Psalm.

"Have you a verse to encourage us in the special offerings for missions?"

"Miss Annie" thought for several minutes and then the words came, "Blessed are ye that sow beside all waters." After another moment of thought she said "Water suggests expansion and growth." After that, with pauses but distinctly, she added "After study of God's Word comes study of the fields. Then they pray. Then they give."



*Program for*  
Fiftieth Annual Meeting of  
**WOMAN'S MISSIONARY UNION**  
*Auxiliary to*  
**SOUTHERN BAPTIST CONVENTION**  
RICHMOND, VA.  
May 6 - 11, 1938

FRIDAY, MAY 6:

Board of Trustees of W.M.U. Training School  
Sessions at 9 A.M., 2 P.M., 7:30 P.M.  
The Jefferson Hotel

SATURDAY, MAY 7:

Committee Meetings: 9 A.M., 2 P.M., 8 P.M.  
The Jefferson Hotel

SUNDAY, MAY 8:

Annual Meeting Sessions: 3 P.M., 7:30 P.M.  
The Mosque

MONDAY, MAY 9:

Annual Meeting Sessions: 9:30 A.M., 2 P.M., 7:30 P.M.  
The Mosque

TUESDAY, MAY 10:

Annual Meeting Sessions: 9:30 A.M., 2 P.M., 7:30 P.M.  
The Mosque

WEDNESDAY, MAY 11:

Missionary Breakfasts: 8 A.M.  
Annual Meeting Sessions: 11 A.M., 2 P.M., 7:30 P.M.  
The Mosque

For further details see "Reminders" in registration envelope.

|  |                       |
|--|-----------------------|
| <i>President</i> .....                     | MRS. F. W. ARMSTRONG  |
| <i>Corresponding Secretary</i> .....       | MISS KATHLEEN MALLORY |
| <i>Young People's Secretary</i> .....      | MISS JULIETTE MATHER  |
| <i>Recording Secretary</i> .....           | MRS. H. M. WHARTON    |
| <i>Assistant Recording Secretary</i> ..... | MRS. SUMTER LEA, JR.  |
| <i>Treasurer</i> .....                     | MRS. W. J. COX        |

**PROGRAM**

THE MOSQUE

Theme—"Hallowed Be Thy Name"

SUNDAY AFTERNOON SESSION—May 8

THE MOSQUE

- 3:00 The Sound of the Trumpets  
Processional of Ten Original States, Followed by Nine States in Order of Joining Union  
Chorus Choir—"The Year of Jubilee Has Come"  
"The Voice of the Past" calls to memory the beginnings and early history of Woman's Missionary Union, introducing Mrs. Wesley N. Jones who represents Mrs. Theodore Whitfield, the chairman of the May meeting in 1888. In turn "The Voice" presents a representative for each of the first five presidents:  
Miss M. E. McIntosh, *Represented by*  
Her State's President: Mrs. J. B. Boatwright, S. C.  
Mrs. A. M. Gwathmey, *Represented by*  
Her Daughter: Mrs. Weston Bruner, Va.  
Mrs. C. A. Stakely, *Represented by*  
Her State's Treasurer: Mrs. Bina M. Byrd, Ala.  
Mrs. J. A. Barker, *Represented by*  
Her Friend: Miss Bennie Russell, Va.  
Miss Fannie E. S. Heck, *Represented by*  
Her Niece: Margaret Heck Clark, D.C.  
Mrs. W. C. James then tells of the years of her presidency as do Mrs. W. J. Cox and Mrs. F. W. Armstrong, who calls the meeting to order.

Organization

Welcome—Mrs. G. R. Martin, Va.

Message from Miss Annie W. Armstrong—*Read by*  
*Former Recording Secretary, Mrs. A. C. Johnson*

Hymn—"This Glad Year of Jubilee"

"Unto the Lord the Glory"—Miss Kathleen Mallory

Prayer—Miss Emma Leachman, Ga.

Musical Benediction

*PROGRAM—Continued*

SUNDAY EVENING SESSION—May 8

THE MOSQUE

---

7:30 The Sound of the Trumpets

Chorus Choir

Congregational Singing

Responsive Reading—Number 328 in “Precious Hymns”—  
and Prayer

—Dr. W. C. James, *Richmond, Va.*

Special Music

Address—Dr. Robert E. Speer

Musical Benediction—Words and Music by Mrs. Frank K.  
Poole, S. C.

As the measure of Thy goodness  
May our gratitude ascend—  
Till the nations learn to love Thee  
To the earth's remotest end.

Amen

*Page Thirty-Four*

*PROGRAM—Continued*

MONDAY MORNING SESSION—May 9

THE MOSQUE

---

9:30 The Sound of the Trumpets  
Hymn—“Holy, Holy, Holy”  
Jubilee Theme and Year's Watchword  
Devotional—“Hallowed Be Thy Name”  
—Mrs. A. T. Robertson, *Ky.*  
Reading of Minutes—Mrs. H. M. Wharton  
Appointment of Committees  
Election of Committee on Nominations  
Presentation of Hostess Committee  
—Mrs. Howard Jenkins, *Chairman of W.M.U. Com-  
mittee on Arrangements, Richmond*  
Exalting His Name  
In Service—Miss Mallory  
In Gifts—Mrs. Cox  
Report of Auditor  
Presentation of W.M.U. History—“Following in His  
Train”—Mrs. William McMurry, *Tenn.*  
Presentation of Golden Jubilee Souvenir Book  
—Mrs. George McWilliams, *Mo.*  
Special Music  
President's Message—Mrs. F. W. Armstrong  
Prayer  
Musical Benediction

MONDAY AFTERNOON SESSION—May 9

THE MOSQUE

---

2:00 The Sound of the Trumpets  
Hymn  
Prayer  
Reading of Minutes—Mrs. Wharton  
Greetings from Women's Missionary Organizations of  
Northern Baptist Convention and of Other Denomina-  
tions  
(Concluded on Next Page)

*Page Thirty-Five*

*PROGRAM—Continued*

(Concluding MONDAY AFTERNOON SESSION)

Exalting His Name

In Missionary Education of Young People  
—Miss Juliette Mather

Children Reflecting His Brightness

Boys and the Business of the King  
—Mrs. Elizabeth Briggs Pittman, *N. C.*  
—Mr. Robert Sutherland, *Ky.*

Girls in Glorious Praise  
—Mrs. W. Lindsay Smith, *S. C.*  
—Miss Martha Sconyers, *Ala.*

Young Womanhood Proclaims His Love  
Miss Kiyoko Shimose, *Japan*

Magazines That Glorify Him  
—Mrs. R. K. Redwine, *N. C.*

Through the Margaret Fund  
Mrs. Frank Burney, *Ga.*

Musical Benediction

---

MONDAY EVENING SESSION—May 9

THE MOSQUE

---

7:30 Historical Pageant—The Path of the Golden Years

Prologue: Golden Trumpet Sounding

First Episode: The Golden Yesterday

Second Episode: The Golden Today

Third Episode: The Golden Tomorrow

Author and Director—Mrs. C. D. Creasman, *Tenn.*

Reader—Mrs. G. R. Martin, *Va.*

Chairman—Miss Virginia Withers, *Richmond*

*Page Thirty-Six*

*PROGRAM—Continued*

TUESDAY MORNING SESSION—May 10

THE MOSQUE

---

9:30 The Sound of the Trumpets

Hymn—"Holy, Holy, Holy"

Jubilee Theme and Year's Watchword

Devotional—The Hallowed Name  
Mrs. W. H. Gray, *Ala.*

Reading of Minutes—Mrs. Wharton

Exalting His Name through

W.M.U. Literature Dept.—Miss Ethel Winfield,  
*Secretary*

Personal Service—Mrs. Eureka Whiteker, *Ky.*

Mission Study—Mrs. Una R. Lawrence, *Mo.*

Stewardship—Mrs. Carter Wright, *Ala.*

Life through His Name in the Homeland

Presentation of Plans for 1939 Week of Prayer for  
Home Missions—Miss Vonnie Lance, *S.C.*

Address—Mrs. Irene Hanley, *Ill.*

Hymn—"Jesus Saves"

Address—Dr. John R. Sampey

Musical Benediction

*Page Thirty-Seven*

*PROGRAM—Continued*

TUESDAY AFTERNOON SESSION—May 10

THE MOSQUE

---

2:00 The Sound of the Trumpets

Hymn

Prayer

Reading of Minutes—Mrs. Wharton

W.M.U. Training School Processional

“Let Us Exalt His Name Together”

—Mrs. G. A. McWilliams, *Mo.*

Golden Jubilee Committee Chairman

Exalting His Name at “House Beautiful”

—Miss Carrie U. Littlejohn, *Ky.*

Memorial Service—Mrs. Ryland Knight, *Ga.*

W.M.U. Training School Recessional

Musical Benediction

*PROGRAM—Continued*

TUESDAY EVENING SESSION—May 10

THE MOSQUE

---

7:30 The Sound of the Trumpets

Chorus Choir

Reading of Minutes—Mrs. Wharton

Hymn—“All Hail the Power of Jesus’ Name”

Prayer—Dr. Charles E. Maddry

“At the Name of Jesus”

Japan—Miss Kiyoko Shimose

South America—Miss Waldemira Almeida

Cuba—Mrs. Pura Cova de Hernandez

Texas-Mexican W.M.U.—Miss Gloria Ruiz

Africa—Mrs. M’bola Ayorinde, *Nigeria*

Europe—Miss Helen Sabo

China—Miss Moonbeam Tong

Appeal for Southern Baptist Relief Work in China

—Miss Juanita Byrd, *China*

—Mrs. George Carver, *China*

—Miss Roberta Pearle Johnson, *China*

Offering

Hymn—“O Zion, Haste”

Prayer—Dr. J. B. Lawrence

Musical Benediction

## PROGRAM—Continued

WEDNESDAY MORNING—May 11

MISSIONARY BREAKFASTS—8 o'Clock

Arranged by Miss Blanche Sydnor White, *Richmond, Va.*

### THE AUDITORIUM OF THE JEFFERSON HOTEL

Presiding—Miss Kathleen Mallory, *Executive Secretary of W.M.U. of S.B.C.*  
State Hostess—Mrs. J. Clyde Turner, *W.M.U. President of North Carolina*  
Richmond Hostess—Mrs. J. B. Hill, *First Baptist Church*  
Speakers—Miss Willie Kelly, Dr. Roberta Ma, Miss Juanita Byrd, Miss Margie Shumate, Miss Irene Jeffers—*China*

### THE FLEMISH ROOM OF THE JEFFERSON HOTEL

Presiding—Mrs. Charles E. Maddry  
State Hostess—Mrs. George A. Ross, *W.M.U. Vice President from District of Columbia*  
Richmond Hostess—Miss Daisy Goode, *Westhampton Baptist Church*  
Speakers—Mrs. C. K. Dozier, Miss Kiyoko Shimose—*Japan*

### THE MAIN DINING ROOM OF THE JEFFERSON HOTEL

Presiding—Miss Carrie U. Littlejohn, *Principal W.M.U. Training School, Louisville, Kentucky*  
State Hostess—Mrs. C. M. Truex, *W.M.U. Corresponding Secretary from Missouri*  
Richmond Hostess—Mrs. Earle Sibley, *Leigh Street W.M.S.*  
Speakers—Mrs. M. N. McCall, Mrs. Pura Cova de Hernandez, Miss Mildred Matthews—*Cuba*

### THE JEFFERSON ROOM OF THE JEFFERSON HOTEL

Presiding—Mrs. Carter Wright, *Southern W.M.U. Representative and Southwide Stewardship Chairman*  
State Hostess—Mrs. Ida M. Stallworth, *W.M.U. Corresponding Secretary from Alabama*  
Richmond Hostess—Mrs. A. J. Chewning, *Ginter Park W.M.S.*  
Speakers—Mrs. H. P. McCormick, Miss Kathleen Manley, Miss May Perry, Mrs. J. C. Pool—*Nigeria*

### THE SALON OF THE JEFFERSON HOTEL

Presiding—Mrs. Eugene Levering, *W.M.U. Vice President from Maryland*  
State Hostess—Mrs. Samuel R. Barnes, *W.M.U. Corresponding Secretary from Maryland*  
Richmond Hostess—Mrs. Howard G. Whitehead, *Grove Avenue W.M.S.*  
Speakers—Mrs. S. L. Watson, Miss Waldemira Almeida, Mrs. F. A. R. Morgan, Mrs. A. E. Hayes, Mrs. A. B. Deter—*Brazil*

### DINING ROOM #1 OF THE COMMONWEALTH CLUB

Presiding—Miss Juliette Mather, *Young People's Secretary of W.M.U. of S.B.C.*  
State Hostess—Mrs. B. A. Copass, *W.M.U. Vice President from Texas*  
Richmond Hostess—Mrs. W. P. Matthews, *Second Baptist W.M.S.*  
Speakers—Mrs. J. R. Saunders, Mrs. Nannie S. Britton, Miss Moonbeam Tong, Mrs. George Carver, Mrs. John W. Lowe, Miss Helen McCullough—*China*

## PROGRAM—Continued

### DINING ROOM #2 OF THE COMMONWEALTH CLUB

Presiding—Mrs. Frank Burney, *W.M.U. Vice President from Georgia and for the Past 16 Years Southwide Margaret Fund Chairman*  
State Hostess—Miss Hannah Reynolds, *W.M.U. Corresponding Secretary from Louisiana*  
Richmond Hostess—Mrs. Wm. C. Butler, *Barton Heights W.M.S.*  
Speakers—Mrs. R. S. Jones, Mrs. O. P. Maddox, Mrs. W. W. Enete, Mrs. W. H. Berry, Mrs. E. A. Nelson—*Brazil*

### THE WASHINGTON ROOM OF THE JOHN MARSHALL HOTEL

Presiding—Mrs. M. L. Jenkins, *W.M.U. Vice President from Louisiana*  
State Hostess—Mrs. Ned Rice, *W.M.U. Vice President from Mississippi*  
Richmond Hostess—Mrs. M. J. White, *Woodland Heights W.M.S.*  
Speakers—Mrs. Aaron Hancock, Rev. and Mrs. L. C. Smith, Mrs. R. A. Pryor—*Home Fields*

### THE BYRD ROOM OF THE JOHN MARSHALL HOTEL

Presiding—Mrs. Eureka Whiteker, *Southwide Personal Service Chairman*  
State Hostess—Miss Frances Traylor, *W.M.U. Corresponding Secretary from Mississippi*  
Richmond Hostess—Mrs. Linwood Stockmar, *Pine Street W.M.S.*  
Speakers—Mrs. M. W. Rankin, Miss Grace Wells, Mrs. T. Neil Johnson, Miss Louise Ligh, Mrs. A. S. Gillespie—*China*

### THE JOHN MARSHALL ROOM OF THE JOHN MARSHALL HOTEL

Presiding—Mrs. George McWilliams, *W.M.U. Vice President from Missouri and Golden Jubilee Chairman*  
State Hostess—Mrs. R. L. Harris, *W.M.U. Vice President from Tennessee*  
Richmond Hostess—Mrs. Lewis Reams, *Tabernacle W.M.S.*  
Speakers—Mrs. W. E. Craighead, Rev. and Mrs. L. V. Hanna—*Europe, Palestine*

### THE ROOF GARDEN OF THE JOHN MARSHALL HOTEL

Presiding—Mrs. Taul B. White, *Southern W.M.U. Representative*  
State Hostess—Mrs. J. B. Boatwright, *W.M.U. Vice President from South Carolina*  
Richmond Hostess—Mrs. P. E. Spivey, *Northside W.M.S.*  
Speakers—Mrs. B. L. Lockett, Mrs. M'bola Ayorinde, Miss Eva Sanders, Miss Ruth Walden—*Nigeria*

### THE COFFEE SHOP OF THE WILLIAM BYRD HOTEL

Presiding—Mrs. Una Roberts Lawrence, *W.M.U. Southwide Mission Study Chairman and Mission Study Editor of the Home Mission Board*  
State Hostess—Miss Mary Northington, *W.M.U. Corresponding Secretary from Tennessee*  
Richmond Hostess—Mrs. J. E. Norvell, *Weatherford W.M.S.*  
Speakers—Miss Fannie Taylor, Miss Mary Headen, Miss Bertha Wallis, Mrs. L. W. Martin, Miss Eva Inlow, Miss Gloria Ruiz—*Home Fields*

### THE BALLROOM OF THE WILLIAM BYRD HOTEL

Presiding—Mrs. R. K. Redwine, *Southern W.M.U. Representative*  
State Hostess—Mrs. John Hathaway, *W.M.U. Corresponding Secretary from Illinois*  
Richmond Hostess—Mrs. Meda Epps, *Grace Baptist W.M.S.*  
Speakers—Miss Alice Parker, Miss Mary Moorman, Miss Lillian Thomasson, Miss Margaret Jung, Miss Roberta Pearle Johnson, Miss Hannah Plowden—*China*

*PROGRAM—Continued*

WEDNESDAY MORNING SESSION—May 11

BROAD STREET METHODIST CHURCH

Service Broadcasted for Visitors at Mosque

---

*Commemoration Service*

11:00 Organ Music

Quartette—"The Saints Who from Their Labors Rest"

Responsive Reading—Pages 44-45—Mrs. W. C. James, *Va.*

Prayer—Mrs. Eugene Levering, *Md.*

Tribute to the Spirit of 1888—Miss Mather

As My Mother Knew Them—Mrs. H. M. Wharton

Unveiling and Presentation of Memorial Tablet

—Miss Clare Whitfield, *Va.*

—Miss Mallory

Acceptance by

—Mrs. A. W. Curry

President of Woman's Missionary Auxiliary of

Broad Street Methodist Church

Special Music

Address—Mrs. W. J. Cox

Benediction

*PROGRAM—Continued*

WEDNESDAY AFTERNOON SESSION—May 11

THE MOSQUE

- 
- 2:00 The Sound of the Trumpets  
Hymn  
Prayer  
Reading of Minutes—Mrs. Wharton  
Magnifying His Name in Training for Service  
Advisory Board of Southwestern Training School  
—Mrs. B. A. Copass, *Tex.*  
Advisory Board of Baptist Bible Institute  
—Mrs. T. B. Sellers, *La.*  
Life through His Name in Foreign Fields  
Presentation of Plans for 1938 Week of Prayer for  
Foreign Missions—Miss Louise Smith, *Fla.*  
Address—Mrs. C. K. Dozier, *Japan*  
Address—Reminiscent and Prophetic—Dr. W. O. Carver  
Presentation of 1939 Plan of Work  
Report of Board of Managers of W.M.U.  
Miscellany  
Reports of Committees  
Greetings —Resolutions  
Appreciation —Nominations  
Registration  
Prayer of Dedication  
Musical Benediction

---

WEDNESDAY EVENING SESSION—May 11

THE MOSQUE

- 
- 7:30 The Sound of the Trumpets  
Chorus Choir  
Devotional—The Enduring Name  
—Miss Willie H. Kelly, *China*  
Special Music  
Sermon—Dr. George W. Truett  
Special Music  
Adjournment  
Musical Benediction

*"Do All in the Name of the Lord Jesus"*

LEADER—A goodly heritage is ours. Faithful women began an organization which provides noble ideals in its chief aims and moral standards. We rededicate ourselves to be witnesses of the things which we have seen and heard. "Laborers together with God", we shall seek to know His will as revealed in the Scriptures. We shall read His Word at the family altar, in our private devotions and in groups assembled to learn of Him.

RESPONSE—"The law of the Lord is perfect, converting the soul: the testimony of the Lord is sure, making wise the simple. The statutes of the Lord are right, rejoicing the heart: the commandment of the Lord is pure, enlightening the eyes. The fear of the Lord is clean, enduring forever: the judgments of the Lord are true and righteous altogether." (*Ps. 19:7-9*)

"And these words, which I command thee this day, shall be in thine heart: and thou shalt teach them diligently unto thy children, and shalt talk of them when thou sittest in thine house, and when thou walkest by the way, and when thou liest down, and when thou risest up." (*Deut. 6:6, 7*)

LEADER—With fifty golden years behind us, with the privileges of a new day before us, as members of Woman's Missionary Union we are eager to bring others to join with us that the world may know Jesus Christ, God's Son. We call to unenlisted ones in our churches: "Come, women, wide proclaim life through your Savior slain."

RESPONSE—"Let him that is taught in the Word communicate unto him that teacheth in all good things." (*Gal. 6:6*)

"The Lord giveth the Word: the women that publish the tidings are a great host." (*R.V. Ps. 68:11*)

LEADER—A sense of stewardship increases. It is stewardship of life. It is stewardship of tithes and offerings. It is stewardship which says, "All that I am and all that I have is God's."

RESPONSE—"For ye are bought with a price: therefore glorify God in your body, and in your spirit, which are God's." (*I Cor. 6:20*)

"Moreover it is required in stewards that a man be found faithful." (*I Cor. 4:2*)

LEADER—Coming to the Father in the name of the Son we ask Him for clear visions of the world through study. We pray that His saving power may be made known among the nations. We pray that His will may be done on earth as it is done in Heaven.

RESPONSE—"Pray without ceasing." (*I Thess. 5:17*)

"If My people, which are called by My name, shall humble themselves, and pray, and seek My face, and turn from their wicked ways; then will I hear from Heaven, and will forgive their sin, and will heal their land." (*II Chron. 7:14*)

LEADER—When Jesus was on earth He went about doing good. Personal service finds opportunities to give the cup of cold water for the sake of the Master, and to tell of the Water of Life that He gives.

RESPONSE—"But whosoever drinketh of the water that I shall give him shall never thirst; but the water that I shall give him shall be in him a well of water springing up into everlasting life." (*John 4:14*)

LEADER—Paul admonished Timothy and Titus, sons in the faith. Woman's Missionary Union leads young people in our churches to know the Kingdom responsibilities committed unto them.

RESPONSE—"Tell ye your children of it, and let your children tell their children, and their children another generation." (*Joel 1:3*)

"Feed My lambs." (*John 21:15*)

LEADER—When believers give themselves wholly unto the Lord; when prayer is made according to the light of His Word; when men, women and children shall behold Him Whom to know is life eternal; when the church prepares herself as the bride of Christ; then "the earth shall be full of the knowledge of the Lord as the waters cover the sea." (For "the Kingdom of God is not meat and drink; but righteousness and peace, and joy in the Holy Ghost." (*Rom. 14:17*))

RESPONSE—"The Lord will give strength unto His people; the Lord will bless His people with peace." (*Ps. 29:11*)

"Therefore, being justified by faith, we have peace with God through our Lord Jesus Christ." (*Rom. 5:1*)

"And the peace of God, which passeth all understanding, shall keep your hearts and minds through Jesus Christ." (*Phil. 4:7*)

LEADER—"Now the Lord of peace Himself give you peace a'ways by all means. The Lord be with you all." (*II Thess. 3:16*) Amen.



*Bronze Tablet Presented to Broad St. M. E. Church, South May 14, 1938*

## The Woman's Hymn

Hymn of the Women's Missionary Societies

FANNIE E. S. HECK.

Tune: "Come, Thou Almighty King."

1. Come wo - men, wide pro - claim Life through your Sav - - iour slain;  
 2. Come, clasp - ing chil - dren's hands, Sis - ters from ma - - ny lands,  
 3. Work with your cour - age high, Sing of the day - - break nigh,  
 4. Then when the gar - nered field Shall to our Mas - - ter yield

Sing ev - er - more. Christ, God's ef - ful - gence bright, Christ, who a -  
 Teach to a - dore; For the sin - sick and worn, The weak and  
 Your love out - pour. Stars shall your brow a - dorn, Your heart leap  
 A boun - teous store, Christ, hope of all the meek, Christ, whom all

rose in might, Christ, who crowns you with light, Praise and a - dore.  
 o - ver - borne, All who in dark - ness mourn, Pray, work, yet more.  
 with the morn, And by his love up - borne, Hope and a - dore.  
 earth shall seek, Christ, your re - ward shall speak, Joy ev - er - more.

Words copyright, 1913, by Woman's Missionary Union, S. B. C

## Golden Jubilee Hymn

"This Glad Year of Jubilee"

MRS C. C. PUGH

Tune: "Hark, Ten Thousand Harps"

Blow ye trum - pets, blow ye trum - pets, Swell the great tri - um - phant sound,  
 Hal - low, hal - low, all ye peo - ple, This the sa - cred fif - tieth year,  
 O pro - claim ye, O pro - claim ye, Li - ber - ty through - out the land;

God, al - migh - ty to de - liv - er, Reigns to earth's re - mo - test bound.  
 Let its gold - en chal - lenge lead you In - to ways un - spoiled by fear.  
 Li - ber - ty that frees the cap - tives As for God they take their stand.

He is full of all com - pas - sion, Love un - fail - ing, pure and free.  
 Ye shall hon - or all His stat - utes, And His judg - ments ye shall keep.  
 Sing His prai - ses, sing His prai - ses, Je - sus died to set men free.

Blow ye trum - pets, blow ye trum - pets, This glad year of Jub - i - lee.

Copyrighted Words, 1937, by Woman's Missionary Union, S.B.C.



WOMAN'S MISSIONARY UNION  
AUXILIARY TO SOUTHERN BAPTIST COUVENTION  
1111 COMER BUILDING  
BIRMINGHAM, ALABAMA